

OVERSTRAND MUNICIPALITY: ELECTRICITY TARIFFS FOR 2026/27 AND THE COST OF SUPPLY STUDY**S Muller
23 February 2026****Chief Engineer: Infrastructure Services****(028) 313 8019**

1. Executive Summary

The purpose of this report is to provide the necessary information and motivation regarding the 2026/27 financial year proposed electricity tariff changes as calculated by the Cost of Supply (CoS) study.

National Energy Regulator of South Africa (NERSA) requires a CoS study to establish and design electricity tariffs that will enable the Municipality to provide the service required by customers and recover costs incurred to ensure the sustainability of the Municipality.

The objective of a CoS study is to apportion all costs required to service customers among each customer class in a fair and equitable manner, thereby developing cost reflective tariffs.

2. Service Delivery and Budget Implementation Plan - IGNITE

Directorate of Infrastructure Services
Electrical Services

3. Compliance with Strategic Priorities

Provision of democratic, accountable and ethical governance
Provision and maintenance of municipal services
Creation and maintenance of a safe and healthy environment
Promotion of tourism, economic and social development

4. Delegated Authority

None

5. Legal Requirements

Electricity Regulation Act (Act 4 of 2006), ERA
Electricity Regulation Amendment Act, 2024 (ERAA)
Electricity Price Determination Rules (2024)
EPP, Electricity Pricing Policy, 1998 (GG No. 31741 of 19 December 1998)
Municipal Finance Management Act, 2003 (MFMA)
National Energy Regulator Act, 2004 (Act No 40 of 2004)

6. Background/Discussion/Evaluation/Conclusion

Background

The National Energy Regulator (NERSA) is a regulatory authority established in Terms of Section 3 of the National Energy Regulator Act, 2004 (Act No 40 of 2004). NERSA's mandate includes regulation of the electricity supply industry. According to Section 4(ii) of the Electricity Regulation Act, 2006 (Act No 4 of 2006), the Energy Regulator must regulate electricity prices and tariffs.

Policy position 23 of the Electricity Pricing Policy, 1998 (GG No. 31741 of 19 December 1998) states the following:

“Electricity distributors shall undertake Cost of Supply (CoS) studies at least every five years, but at least when significant licensee structure changes occur, such as in customer base, relationships between cost components and sales volumes. This must be done according to the approved National Energy Regulator of South Africa (NERSA or ‘the Energy Regulator’) standard to reflect changing costs and customer behaviour”.

NERSA requires the following regarding municipal tariffs for electricity:

- It should be in line with the NERSA Electricity Pricing Policy
- All tariffs must be set as close as possible to the cost of supply
- All small customers (domestic and business) should have fully cost reflective tariffs, with the following structure:
 - A basic charge to reflect the fixed metering, billing, revenue collection and customer services cost
 - A capacity charge based on the installed/limited capacity of the customer
 - An energy charge that covers the full energy cost, losses and surplus requirement.
- All large customers should be charged a Time of Use (ToU) tariff with structure and slots as per the Eskom Municflex tariff applicable to the Overstrand area.

A court order on 04 December 2025 ruled that Municipalities must submit their tariff applications to NERSA by 20 March 2026. A court ruling on 20 February 2026 ruled that the deadline for tariff submissions to NERSA has been amended to 31 March 2026.

Eskom advised on 13 February 2026 that their price increase for Municipal customers is 9.01% from 1 July 2026.

Discussion

Overstrand Municipality commissioned a comprehensive electricity pricing study with the following three components:

- Ringfencing electricity. The key objective of this part is to establish the true cost and revenue of electricity supply in the municipality.
- The Cost of Supply study. The objective of the CoS study is to know the cost of supplying customers on each tariff and to compare this with the revenue from the current tariffs and thus the cross-subsidies.
- Tariff study. The final step is to analyse the structure of the tariffs and how it differs from the cost structures and identify the cross-subsidies within the tariffs and then to provide new tariffs.

Neil Lyners & Associates was appointed by Overstrand Municipality in March 2022 to do a CoS study and to develop cost reflective electricity tariffs. One of the key members of the team was Energy specialist, Hendrik Barnard (of the company Elexpert), who is a national energy expert on CoS Studies and Electricity Tariffs.

The study supplied detailed information on the following:

- The real cost of supplying different customers,
- The difference between costs and current tariffs and subsidies applied, and
- The cost of various activities such as purchases, network and customer services, personnel costs, etc.

This information was used to develop the following:

- Formulate a pricing policy in view of the new information obtained,
- Change tariffs to comply with the new policy set,
- Formulate specific strategies of addressing cross-subsidies,
- Develop management practices to address the high-cost items,
- Develop marketing strategies to target opportunities offered by different tariffs.
- Develop strategies which will facilitate the introduction of customer choice, and
- Develop pricing strategies to integrate renewable energy into the system.

The CoS study was presented to Council on 24 April 2023.

For the proposed Eskom tariff increase, the Municipal electricity tariff increase was calculated as follows:

GI	Expenses	Contribution	% Increase	Effective %
BP	Bulk Purchases	74.71%	9.01%	6.73%
S	Salaries & Wages	5.32%	6.75%	0.36%
R	Repairs and Maintenance	1.63%	13.86%	0.23%
Dep	Depreciation	3.73%	5.00%	0.19%
FC	Finance Costs	1.74%	6.34%	0.11%
OE	Other Expenditure	2.16%	3.70%	0.08%
OH	Overheads	10.71%	7.52%	0.81%
	Total	100.00%		8.50%

Evaluation

The CoS study proposed the following:

- Indigent customers must apply, and if qualified, will receive a subsidy covering the basic charge, capacity charge for 30 Amps, and Free Basic Electricity as prescribed in the municipality’s Indigent Policy. The subsidy will be offset by the Equitable Share Grant received from the central government.
- All small customers (domestic and business) should have fully cost reflective tariffs, with the following structure:
 - A basic charge to reflect the fixed metering, billing, revenue collection and customer services cost
 - A capacity charge based on the installed/limited capacity of the customer
 - An energy charge that covers the full energy cost, losses and surplus requirement.
- All large customers should be charged a Time of Use (ToU) tariff with structure and slots as per the Eskom Municflex tariff applicable to the Overstrand area.
- Due to comprehensive nature of the tariff reforms, it was decided that the proposed recommendations be phased in over 4 years. The implementation started from the 2024/25 financial year (1 July 2024.)
- The 2026/27 financial year will be the 3rd year of implementation of the 2022 CoS.

CoS Year	Financial Year	Eskom Increase	Overstrand Increase
Year 1	2024/25	11.32%	10.04%
Year 2	2025/26	12.72%	9.96%
Year 3	2026/27	9.01%	8.50%
Year 4	2027/28	TBA	TBA

- A new CoS study must be undertaken in the 2026/27 financial year for implementation from 1 July 2027 as the 5-year validity period of the 2022 CoS would've lapsed.

The results of the CoS calculation for the proposed electricity tariffs for the 2026/27 financial year are shown in Annexure B

Conclusion

The implementation of the detailed Ringfencing, Cost of Supply and Pricing Study includes:

- Simplifying subsidies for indigent customers,
- Phasing out of the inclined block tariff for electrical energy and replacing it ultimately with a flat rate,
- Phasing in a Capacity Charge to enable consumers to choose the most appropriate and cost-effective electrical capacity connection they require, and
- Large consumers should be charged a Time of Use (ToU) tariff with structure and slots as per the Eskom Municflex tariff applicable to the Overstrand area. This tariff allows for High- and Low Seasons as well as Peak, Standard and Off-Peak periods.

The Municipality will be implementing the third year of the CoS study for 2026/27.

Eskom proposed a 9.01% increase in bulk electricity purchase tariffs which is an effective 8.5% increase. The CoS study was used to calculate the third-year implementation increase based on the 8.5% increase. The results are illustrated in Annexure B.

7. Financial Implications

Basis: Revenue in accordance with annual approved tariffs.

8. Staff Implications

None

9. Comments from other Departments, Divisions and Administrations

Electrical Department: Senior Manager: G Lotter

The Electrical Department supports the proposed 2026/27 electricity tariffs as calculated by the CoS study.

10. Annexures

Annexure A: Overstrand Cost of Supply and Tariff Study Executive Summary
Annexure B: Electricity Tariff tables

RECOMMENDATION TO THE COUNCIL:

1. that Council **takes note** of the previously approved Cost of Supply study and the implementation thereof over a four-year period from 1 July 2024;
2. that Council **approves** that the municipality implement the changes to the electricity tariffs, as advised in the Cost of Supply study, for year three (2026/27) of the four-year implementation plan;
3. that Council **takes note** that a new Cost of Supply study will be undertaken in the 2026/27 financial year because the five-year validity of the 2022 Cost of Supply will lapse in 2027;
4. that a public participation process be followed for the proposed 2026/27 electricity tariffs; and
5. that the proposed 2026/27 electricity tariffs and the Overstrand Cost of Supply and Tariff study be submitted to NERSA for approval after the public participation process.

RESPONSIBLE OFFICIAL :

**S MULLER
CFO**

TARGET DATE FOR IMPLEMENTATION :

1 JULY 2026

**Annexure A: Overstrand Cost of Supply
and Tariff Study Executive Summary**

OVERSTRAND MUNICIPALITY



OVERSTRAND ELECTRICITY: RINGENCING, COST OF SUPPLY AND TARIFF STUDY – 2021/2022: EXECUTIVE OVERVIEW

(Project Ref. No 22014E)

JANUARY 2023

Compiled for :

Overstrand Municipality
PO Box 20
Hermanus
7200

Compiled by :



Neil Lyners & Associates (RF) (Pty) Ltd
P O Box 4901
TYGERVALLEY
7530
Theo Potgieter
theo@lynerns.co.za

REPORT DETAILS :

Lyners Reference No: 22014E
Client: Overstrand Municipality
Report prepared by: Theo Potgieter / Hendrik Barnard
Client representative: Marissa Radyn
Keywords: Cost of Supply, Tariffs, Summary

Revision record and date: Final Rev 0 – January 2023

Date	Revision	Status	Format	Issued to:
January 2023	0	Final	pdf	M Radyn

Disclaimer, Confidentiality and Copyright :

This report was prepared for the Client based on information obtained from the Client including existing services information, meter readings of historical electricity consumption, data of equipment installed, asset registers, electricity purchase and sales data and related information as was required as part of the project.

Lyners, its members and staff accept no responsibility for :

- Correctness of the information provided.
- Any matters outside the agreed scope of work.

The contents of this report are confidential. Any third party which uses or considers any information, calculations or statement in this report does so at their own risk.

Copyright of this report vests with Lyners, unless otherwise agreed to in writing and no part of this report may be reproduced copied or transmitted in any form or by any means whatsoever to any person without written permission by the copyright holder.

CONTENTS LIST	PAGE
1. INTRODUCTION.....	1
2. INITIAL TARIFF ASSESMENT	1
3. LOAD PATTERN ASSESMENT.....	1
4. RINGFENCING.	1
5. REVENUE REQUIREMENT.	2
6. COST OF SUPPLY.....	3
7. KEY FINDINGS.....	3
8. PRICING POLICY.	4
9. CROSS SUBSIDIES TO THE POOR.	4
10. TARIFF IMPACT.....	4
11. BULK TOU TARIFFS.....	7
12. SMALL SCALE EMBEDDED GENERATION (SSEG)	7
13. PHASE IN	7
14. TARIFF SCHEDULE.....	8
15. CONCLUSIONS.....	10

ANNEXURES

1. INTRODUCTION.

Overstrand Municipality (Overstrand) sanctioned a comprehensive electricity pricing study which contains 3 main components :

- Ringfencing electricity. The key objective of this part of the study is to establish the true cost and revenue of electricity supply in the municipality.
- The Cost of Supply study. The objective of the cost of supply study is to know the cost of supplying customers on each tariff and to compare this with the revenue from current tariffs and thus the cross-subsidies.
- Tariff study. The final step is to analyse the structure of the tariffs and how it differs from the cost structures and identify the cross subsidies within the tariffs and then to propose new tariffs.

This paper describes the details relating to all three components of the study undertaken for Overstrand Municipality. It contains the detailed results for the whole area.

2. INITIAL TARIFF ASSESMENT

This section summarises the findings in terms of the existing tariffs and related issues. This was determined through analysis of the existing tariffs and discussions with electricity staff:

Seperate charges.

- The current Infrastructure Charge per Meter per month is not included in any of the tariff rates and as a separate rate.
- The Exceeding notified maximum demand charge is not approved by NERSA.

Non-Cost reflectiveness.

- The TOU tariffs do not contain the seasonal difference and is thus very un-cost reflective as electricity is sold in High Demand periods at a loss and during Low demand periods with a very high margin.
- The domestic tariffs with inclining block rates, no capacity charges, are very un-cost reflective and causing massive price distortions and inflated incentives for consumers to install renewable energy thus causing big revenue losses.

Assistance to poor consumers

The assistance to poor consumers is not clearly described in the Indigent Policy or the Tariff Policy or tariff schedule: Apparently it has been changed substantially since the initial assessment.

3. LOAD PATTERN ASSESMENT

The following conclusions can be made from the analysis of the consumption load profiles:

- There is a very clear holiday / seasonal pattern with high increases during December / January.
- This pattern is very dominant in Kleinmond and Gansbaai but also Hermanus.
- The average peaks are more dominant during weekday evenings but a new peak is arising during Sunday mornings.
- The highest peaks for various of the Eskom points took place soon after the return of supply after extended Eskom outages.
- It is clear that there is very little maximum demand or capacity control by customers or through a geyser control system.

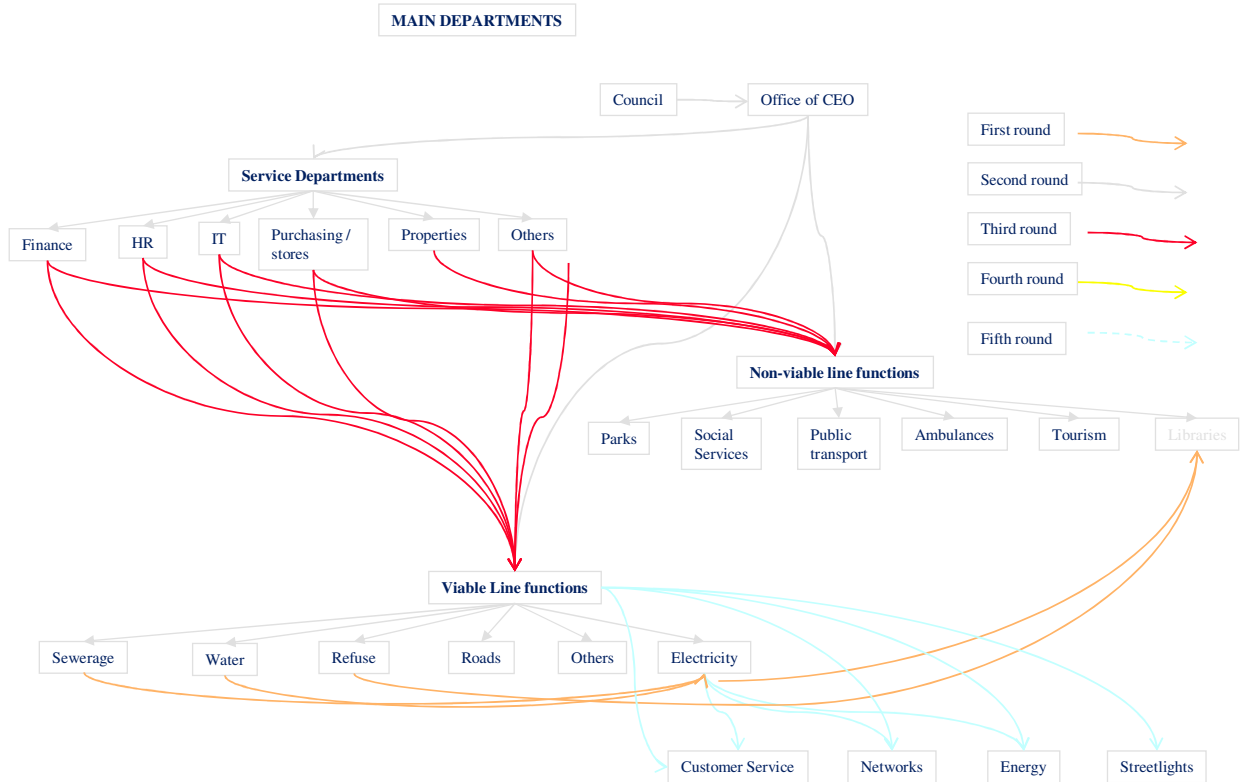
4. RINGFENCING.

A process was followed to determine the full cost of electricity supply including a fair contribution to the municipal overhead costs. This process is illustrated graphically in **Figure 21** below.

This shows the contribution to overheads should be about R32 mill per year.

Figure 21

OVERSTRAND RINGFENCING PROCESS



5. REVENUE REQUIREMENT.

This section calculates the revenue requirement for Overstrand using the NERSA method. The calculation of the revenue requirement is shown in Table 38. It also shows the costs per generic function of electricity supply.

Table 38

NERSA RR	Energy	Service and connection Total	Distribution Total	Streetlight Total	Electricity Total
Bulk	300 553 535	-	-	-	298 272 081
Operating cost		2 530 670	7 879 223	420 644	13 581 943
Shared cost		20 746 367	10 983 307	4 804 158	32 017 694
Depreciation		4 408 383	21 962 208	1 000	26 411 519
Interest		-	15 541 481	-	15 749 850
Repairs & Maintenance		6 021 184	11 716 715	2 014 142	23 549 748
Impairment loss		323	437 506	-	1 270 989
Sub-total cost	300 553 535	33 706 928	68 520 439	7 239 944	410 853 824
Current revenue					(474 343 003)
Surplus: Actual				-15%	(63 489 178)
Total Allowed revenue					(474 343 003)

The following very important facts need to be noted:

- The calculated Head Office / Service department allocation (admin charge) to electricity is equal to 40% own costs excluding Eskom. NERSA is unlikely to accept this high value. Various options were considered but this issue needs to be further discussed.
- If this overhead is adjusted to 25% of own costs the surplus increases to 20% which is equal to the max NERSA benchmark.
- The 40% will thus be used for COS calculations.

Based on this and all the adjustments it is clear that the current Overstrand tariffs do recover the NERSA formula revenue requirement. It is thus proposed that the next part of the study which relate to tariff structures, not total revenue requirement, be based on the current tariff levels.

6. COST OF SUPPLY.

A detailed process of cost calculation and revenue reconciliation was followed to calculate the current and revenue compared with the cost of supply in respect of each of the tariffs.

The summary results is shown in Table 54.

Table 54

OVERSTRAND				
TOTAL COSTS	TOTAL	REFERENCE	OVERCHARGE	% Overcharge
TARIFF CODE	COST	TARIFF REVENUE	RAND	+% of Tariff
Residential Indigent as per paragraph A of the Indigent Policy per meter	31 836 691	11 755 877	-20 080 814	-170.8%
Residential Indigent minder as R100 000 No 50 FBE	20 408 999	13 514 871	-6 894 128	-51.0%
Residential Indigent as per paragraph B, C & D of the Indigent Policy per meter	2 518 464	2 104 986	-413 478	-19.6%
E1D1 SINGLE PHASE LIFE LINE	203 650	68 498	-135 152	-197.3%
E1D1 SINGLE PHASE LIFE LINE INDIGENT TEMPORARY STRUCTURE	15 680 990	6 594 594	-9 086 396	-137.8%
E1E1 LED PROJECTS	336 690	70 314	-266 376	-378.8%
4-Part, Domestic, Credit, 1 PH, ≤ 60 Amp (13.8 kVA) (Including Resorts)	69 147 464	79 818 360	10 670 896	13.4%
4-Part, Domestic, Pre-paid, 1 PH, ≤ 60 Amp (13.8 kVA) Uilenskransmond	1 394 446	2 005 352	610 907	30.5%
4-Part, Domestic, Credit, 1 PH, ≤ 60 Amp (13.8 kVA) Dept	1 224 352	1 431 470	207 118	14.5%
4-Part, Domestic, Pre-paid, 1 PH, ≤ 60 Amp (13.8 kVA) (Including Resorts)	133 297 439	135 656 005	2 358 567	1.7%
4 Part, Domestic, Cedit, 3 PH, ≤ 100A (70 kVA)	11 160 917	14 455 333	3 294 416	22.8%
4 Part, Domestic, Cedit, 3 PH, ≤ 100A (70 kVA) Dept	2 050 072	2 678 493	628 421	23.5%
4-Part, Domestic, Pre-paid, 3 PH, ≤ 100A (70 kVA)	3 984 693	4 774 626	789 934	16.5%
2-part, Commercial, Credit, 1 ph:	7 368 608	8 448 119	1 079 511	12.8%
2-part, Commercial, PP, 1 ph	6 152 722	7 208 157	1 055 435	14.6%
1 Part, Commercial, Pre-paid, 1 ph (Economic Development Projects)	351 074	353 269	2 195	0.6%
1-Part, Pre-paid, 20 Amp Businesses, Flats, Sport, Churches.(≥ 800kWh/m 12 months)	1 114 113	1 210 718	96 605	8.0%
2-Part, Commercial, Credit, 3 PH, ≤ 100A (70 kVA)	23 748 308	26 326 181	2 577 873	9.8%
2-Part, Commercial, Pre-paid, 3 PH, ≤ 100A (70 kVA)	8 433 184	9 546 593	1 113 408	11.7%
TIME OF USE TARIFF: MV	118 733 862	108 220 306	-10 513 556	-9.7%
TIME OF USE TARIFF: LV	87 142 891	74 522 104	-12 620 787	-16.9%
Streetlights & CCTV (metered) per kWh (no basic charge)	7 927 960	795 606	-7 132 353	-896.5%
Streetlights & CCTV (consumption) (per 100 Watt / month) (non-metered)	6 391 297	830 079	-5 561 217	-670.0%
CASUAL SUPPLIES	-	-	-	0.0%
Availability: NETWORK CHARGES: SERVICED LAND	13 089 647	12 314 682	-774 965	-6.3%
SMALL SCALE EMBEDDED GENERATION FEED-IN (SSEG)	-61 480	-	61 480	
Other	-	-	-	0.0%
Total	573 637 053	524 704 594	-48 932 459	
	573 637 053	0.00%	-	

The % shows the difference between Cost and revenue as % of cost. Negative shows shortfall and positive shows overcharge.

7. KEY FINDINGS

The following key findings can be made in terms of the tariff levels and structures:

- Poor customers are seriously subsidised. This is based on the subsidisation of the basic charges, the lack of fixed charges, the low first block energy rates and FBE.
- Most domestic consumers are overcharged but some are undercharged.
- Commercial customers are generally overcharged. This is due to high energy charges.
- TOU MV and LV customers are slightly under-charged.
- Streetlight tariffs are too low and do not cover the fixed maintenance costs.
- Availability charges are slightly low.

8. PRICING POLICY.

In view of the findings to date, the summarised pricing policy is provided below:

- It should be in line with the National Electricity Pricing Policy.
- All tariffs should be set as close as possible to the cost of supply.
- Indigent customers as registered in terms of indigent policy.
 - These customers limited to 30 Amps will be charged the full cost reflective fixed charges.
 - The full fixed charges, except for the infrastructure charge, be off-set by the equitable share.
 - Free Basic Electricity (FBE) of 50 kWh/m off-set by equitable share.
 - Remove the IBT structure and replace with single energy rate.
- Cross subsidisation of low usage domestic customers (poor but not indigent) customers should be done as follows:
 - Criteria to include limited consumption.
 - Customers limited to 30 Amps will be charged the full cost reflective fixed charges.
 - The full fixed charges, except for the infrastructure charge, off-set by the equitable share.
 - Remove the IBT structure and replace with single energy rate.
 - No FBE is granted.
- All small customers (domestic / business) > 30 Amp should have a fully cost reflective tariff:
 - A basic charge to reflect the fixed metering, billing, revenue collection and customer services costs.
 - A capacity charge based on the installed / limited capacity of the customer. In other words, the total network costs as calculated for that tariff before (using the relevant demand allocation method), is now divided by the customers' actual capacity.
 - An energy charge that covers the full energy cost, losses and surplus mark-up.
- All large customers should be charged on a TOU tariff with structure and TOU slots as per the Eskom Megaflex tariff applicable to Overstrand including changes over time:

9. CROSS SUBSIDIES TO THE POOR.

The proposed Indigent policy is as follows:

- Indigent consumers apply and if they qualify in terms of the criteria:
 - One of the criteria should be that capacity be limited to 30 Amps.
 - Get charged the full Basic and capacity charge off-set by equitable share.
 - Receive 50 kWh/m of FBE off-set by equitable share.
 - They pay the infrastructure levy.
 - Standard energy charge.
- Poor but not indigent consumers including economic development projects, sports entities, churches etc:
 - These entities all have to apply for relief.
 - Capacity be limited to 30 Amps.
 - Get charged the full Basic and capacity charge off-set by equitable share.
 - They pay the infrastructure levy.
 - They receive no FBE.

The calculations show the following:

- The new calculated equitable share amount will increase to more than R45 mill.

In this way almost the full subsidies to the poor will be covered by the equitable share and not by other consumers.

10. TARIFF IMPACT

The two tables below show the overall impact on customers on each tariff on average. This is for the tariffs before phase in (in other words the whole impact). The impact of each would be about a quarter of this if phased in over 4 years. Table 64 shows the impact if all tariffs were cost reflective in other words the full impact.

Table 64

OVERSTRAND						
CALCULATED REVENUE		2022/2023 Proposed	2022/2023 Reference	Difference	Structure change	Initial cost reflectiveness
Nr	TARIFF NAME	R/year	7.47% Rand		%	
E6A	Residential Indigent as per paragraph A of the Indigent Policy p	34 794 057	12 634 041	22 160 016	175.40%	-170.8%
E6B	Residential Indigent minder as R100 000 No 50 FBE	24 130 469	14 524 431	9 606 038	66.14%	-51.0%
E1D	Residential Indigent as per paragraph B, C & D of the Indigent P	2 334 839	2 262 229	72 610	3.21%	-19.6%
E1D	E1D1 SINGLE PHASE LIFE LINE	302 211	73 615	228 596	310.53%	-197.3%
E1D	E1D1 SINGLE PHASE LIFE LINE INDIGENT TEMPORARY STRUCT	18 953 649	7 087 210	11 866 439	167.43%	-137.8%
E1D	E1E1 LED PROJECTS	612 632	75 566	537 066	710.72%	-378.8%
E1A	4-Part, Domestic, Credit, 1 PH, ≤ 60 Amp (13.8 kVA) (Including	74 241 008	85 780 791	-11 539 783	-13.45%	13.4%
E1B	4-Part, Domestic, Pre-paid, 1 PH, ≤ 60 Amp (13.8 kVA) Uilensk	1 906 997	2 155 152	-248 155	-11.51%	30.5%
E1A	4-Part, Domestic, Credit, 1 PH, ≤ 60 Amp (13.8 kVA) Dept	1 229 834	1 538 400	-308 566	-20.06%	14.5%
E1B	4-Part, Domestic, Pre-paid, 1 PH, ≤ 60 Amp (13.8 kVA) (Includi	139 003 939	145 789 509	-6 785 570	-4.65%	1.7%
E3E	4 Part, Domestic, Cedit, 3 PH, ≤ 100A (70 kVA)	11 526 951	15 535 146	-4 008 196	-25.80%	22.8%
E3E	4 Part, Domestic, Cedit, 3 PH, ≤ 100A (70 kVA) Dept	2 191 645	2 878 576	-686 932	-23.86%	23.5%
E3E	4-Part, Domestic, Pre-paid, 3 PH, ≤ 100A (70 kVA)	3 973 481	5 131 291	-1 157 810	-22.56%	16.5%
E1C	2-part, Commercial, ,Credit, 1 ph:	8 083 278	9 079 193	-995 915	-10.97%	12.8%
E1C	2-part, Commercial, PP, 1 ph	6 531 338	7 746 606	-1 215 269	-15.69%	14.6%
E1E	1 Part, Commercial, Pre-paid, 1 ph (Economic Development Proj	356 506	379 658	-23 152	-6.10%	0.6%
E3G	1-Part, Pre-paid, 20 Amp Businesses, Flats, Sport, Churches.(a	1 160 935	1 301 159	-140 224	-10.78%	8.0%
E3E	2-Part, Commercial, Credit, 3 PH, ≤ 100A (70 kVA)	25 501 568	28 292 747	-2 791 179	-9.87%	9.8%
E3E	2-Part, Commercial, Pre-paid, 3 PH, ≤ 100A (70 kVA)	8 995 365	10 259 723	-1 264 358	-12.32%	11.66%
E5A1	TIME OF USE TARIFF: MV	127 624 651	116 304 363	11 320 288	9.73%	-9.7%
E5	TIME OF USE TARIFF: LV	93 363 517	80 088 906	13 274 611	16.57%	-16.9%
E7A1	Streetlights & CCTV (metered) per kWh (no basic charge)	8 609 727	855 038	7 754 689	906.94%	0.0%
E7A2	Streetlights & CCTV (consumption) (per 100 Watt / month) (nor	7 074 065	892 086	6 181 978	692.98%	0.0%
E8	CASUAL SUPPLIES	-	-	-	#DIV/0!	0.0%
E9	Availability: NETWORK CHARGES: SERVICED LAND	14 067 444	13 234 589	832 855	6.29%	-6.3%
E18	SMALL SCALE EMBEDDED GENERATION FEED-IN (SSEG)	-84 762	-	-84 762	#DIV/0!	0.0%
0	Other	-	-	-		0.0%
0	z	2 398	-	2 398	#DIV/0!	0.0%
1	Total.	616 487 741	563 900 028			0.0%
1		616 487 741	0.00%	-		

Table 65 shows the impact of the phased structure change for year one before the average price increase.

Table 65

OVERSTRAND						
CALCULATED REVENUE		2023/2024 Proposed	2022/2023 Reference	Difference	Structure change	Initial cost reflectiveness
Nr	TARIFF NAME	R/year	Reference	Rand	%	
E6A	Residential Indigent as per paragraph A of the Indigent Policy p	36 097 386	12 634 041	23 463 345	185.72%	-170.8%
E6B	Residential Indigent minder as R100 000 No 50 FBE	25 477 523	14 524 431	10 953 092	75.41%	-51.0%
E1D	Residential Indigent as per paragraph B, C & D of the Indigent P	2 259 433	2 262 229	-2 796	-0.12%	-19.6%
E1D	E1D1 SINGLE PHASE LIFE LINE	125 668	73 615	52 054	70.71%	-197.3%
E1D	E1D1 SINGLE PHASE LIFE LINE INDIGENT TEMPORARY STRUCT	9 783 046	7 087 210	2 695 836	38.04%	-137.8%
E1D	E1E1 LED PROJECTS	195 784	75 566	120 218	159.09%	-378.8%
E1A	4-Part, Domestic, Credit, 1 PH, ≤ 60 Amp (13.8 kVA) (Including	98 263 484	85 780 791	12 482 693	14.55%	13.4%
E1B	4-Part, Domestic, Pre-paid, 1 PH, ≤ 60 Amp (13.8 kVA) Uilensk	2 115 866	2 155 152	-39 286	-1.82%	30.5%
E1A	4-Part, Domestic, Credit, 1 PH, ≤ 60 Amp (13.8 kVA) Dept	1 643 245	1 538 400	104 844	6.82%	14.5%
E1B	4-Part, Domestic, Pre-paid, 1 PH, ≤ 60 Amp (13.8 kVA) (Includi	142 628 727	145 789 509	-3 160 782	-2.17%	1.7%
E3E	4 Part, Domestic, Cedit, 3 PH, ≤ 100A (70 kVA)	14 408 258	15 535 146	-1 126 889	-7.25%	22.8%
E3E	4 Part, Domestic, Cedit, 3 PH, ≤ 100A (70 kVA) Dept	2 681 366	2 878 576	-197 210	-6.85%	23.5%
E3E	4-Part, Domestic, Pre-paid, 3 PH, ≤ 100A (70 kVA)	4 798 845	5 131 291	-332 446	-6.48%	16.5%
E1C	2-part, Commercial, Credit, 1 ph:	8 731 599	9 079 193	-347 594	-3.83%	12.8%
E1C	2-part, Commercial, PP, 1 ph	7 368 909	7 746 606	-377 697	-4.88%	14.6%
E1E	1 Part, Commercial, Pre-paid, 1 ph (Economic Development Proj	369 964	379 658	-9 693	-2.55%	0.6%
E3G	1-Part, Pre-paid, 20 Amp Businesses, Flats, Sport, Churches, (S	1 251 457	1 301 159	-49 702	-3.82%	8.0%
E3E	2-Part, Commercial, Credit, 3 PH, ≤ 100A (70 kVA)	27 274 696	28 292 747	-1 018 051	-3.60%	9.8%
E3E	2-Part, Commercial, Pre-paid, 3 PH, ≤ 100A (70 kVA)	9 828 419	10 259 723	-431 304	-4.20%	11.7%
E5A1	TIME OF USE TARIFF: MV	119 145 939	116 304 363	2 841 576	2.44%	-9.7%
E5	TIME OF USE TARIFF: LV	83 446 396	80 088 906	3 357 490	4.19%	-16.9%
E7A1	Streetlights & CCTV (metered) per kWh (no basic charge)	2 793 710	855 038	1 938 672	226.74%	0.0%
E7A2	Streetlights & CCTV (consumption) (per 100 Watt / month) (nor	2 437 581	892 086	1 545 495	173.24%	0.0%
E8	CASUAL SUPPLIES	-	-	-	#DIV/0!	0.0%
E9	Availability: NETWORK CHARGES: SERVICED LAND	13 442 803	13 234 589	208 214	1.57%	-6.3%
E18	SMALL SCALE EMBEDDED GENERATION FEED-IN (SSEG)	-84 762	-	-84 762	#DIV/0!	0.0%
0	Other	-	-	-		0.0%
0	z	2 398	-	2 398	#DIV/0!	0.0%
1	Total.	616 487 741	563 900 028	52 587 714	9.33%	0.0%
1		616 487 741	0.00%	0.00		

The following very important points are to be noted in this respect:

- The total revenue will remain the same in respect of customers who are to receive relief from the equitable share. Thus, the revenue will either come from the consumer or from the equitable share if they qualify.
- It thus shows a big increase in respect of the Indigents and semi-indigents as the new revenue will include the amounts coming from the equitable share.
- The capacities that have been assumed for consumers is what is considered realistic. Some consumers may however reduce their capacity below what has been assumed which could lead to some revenue loss. A 15% reduction by consumers have been assumed to cater for any possible revenue losses.
- In all other cases the impact is close to ¼ of the impact of the final implementation.
- This is per tariff category and thus for some of the sub tariffs the impact will be different as the various domestic tariffs are grouped together.

The impact for each customer will however be different. It will depend on the utilisation of the capacity provided to customers and the extent to which electricity is used in the peak times:

- The following customers will generally see increased bills:
 - Those that are not utilising their capacity and are not willing to reduce / manage their capacity, due to the Capacity/Access charges.
 - Customers who need large capacity only for a few months in the year.
 - TOU customers who use a lot of electricity during the expensive Winter Peak times and are not willing / able to shift load out of these periods.

If these tariffs are phased in over 4 years, customers will have time to adapt to the new rates and thus manage their bills. The impacts shown in the table above will thus be 1/4 for each of the 4 years.

Extensive analysis has also been done on individual consumers.

11. BULK TOU TARIFFS

TOU tariffs must continue to be applied to Bulk consumers and even be applied to small customers.

The year 1 phase in impact for MV and LV consumers are shown in the **Table 76** below.

Table 76

Voltage	Sum of Old TOU	Sum of New TOU	Diff	Diff %
LV	33374409.06	34290621.37	916212.3053	2.7%
MV	125731688.7	128783002.1	3051313.365	2.4%
Grand Total	159106097.8	163073623.4	3967525.671	2.5%

The biggest problems with the current TOU tariffs are as follows:

- The general tariff levels are understated.
- The TOU differentiation does not match the Eskom TOU tariffs and are not seasonally differentiated.
- This causes overcharges during some periods and undercharges during other periods.
- It also creates inconsistent load shifting impact for the municipality.
- The Demand and Capacity charges are not differentiated by Voltage.

The following is thus proposed in this respect:

- The tariffs thus be developed based on the cost of supply results.
- The differentiation will be changed as per cost differences.
- The markup on energy will be in R/kWh and not in %.
- A TOU tariff also needs to be created for small consumers.

12. SMALL SCALE EMBEDDED GENERATION (SSEG)

The important issue in respect of SSEG customers is that they must be on a cost reflective tariff with fixed and capacity / demand charges close to cost. A new TOU tariff for small consumers, <100 kVA, has been developed. Any consumer can select this tariff, but all SSEG consumers must be on this tariff. It is subject to an application and payment for the supply and installation of a 4 wire, 4 quadrant TOU meter. The tariff has been designed as follows:

- The basic charge equal to the small consumer 3 phase basic charge plus the difference in cost between a 3 phase non-TOU meter and a TOU meter supply.
- The capacity charge is set at the average of the Domestic and Commercial tariff capacity charge.
- The energy rates are set equal to the Bulk LV plus the additional losses on the LV network.
- The reactive energy charge set equal to the Eskom reactive energy charge.

The SSEG Feed-in tariff, which caters for consumers who want to feed-in to the network, is as follows:

- An additional basic charge to cater for the additional metering & administration costs to administer the feed-in.
- The energy credit rates are set at 90% of Eskom Megaflex TOU energy rates (excluding the non-TOU energy rates) applicable to Overstrand.
- This tariff applies to any customer wanting to feed-in irrespective of whether they have a LV or MV connection.
- Various other conditions apply.

13. PHASE IN

It is accepted that the proposed tariff structure changes will have a marked impact on customers. Some customers will pay much less and others much more. For this reason, the possibility to phase the changes in evenly over 4 years could be considered. This can be done as follows:

- Calculate the difference between the current charge and the proposed charge. (basic, Amp, R/kVA, energy).

- Divide the difference by 4 and add to the current charge.
- Then add annual price increase %.
- In year two add 1/4 of the difference and year three the full difference.
- Continue this trend to the end of the 4 year phase in.
- The TOU for small customers and TOU tariff at LV and Embedded tariffs are not phased in because it is either a new tariff or there are very few customers on the tariff.
- In some cases combine different tariffs to reduce the total number.

14. TARIFF SCHEDULE

The proposed tariff schedule is shown in Table 79. It shows the proposed rates excluding annual price increase but including the phase in only restructuring. Once the average increase has been approved it will be applied to all the proposed rates.

Table 79

OVERSTRAND ELECTRICITY TARIFF SCHEDULE		2020/2021	2021/2022	2022/2023	2022/2023	2023/2024	2022/2023 to 2023/2024 Increase	
Tariff Code	Details	Exclude VAT	Exclude VAT	After increase	Restructured	Restructured with phase in and increase		
EF	FIXED CHARGES			7.47%		0.00%		
EF1	Infrastructure Charge per Meter per month	R/POS/m	16.65	16.65	16.65	16.65	0.00%	
E1	SINGLE PHASE : Domestic							
E1A	4-Part, Domestic, Credit, 1 PH, ≤ 60 Amp (13.8 kVA) (Including Resorts)							
E1A1	Basic Monthly charge per meter	R/POS/m	356.2	408.17	438.66	156.04	368.01	-16.11%
	Capacity charge	R/Amp/Phase/m				7.88	1.97	New
E1A2	IBT BLOCK 1 0 - 350 kWh	c/kWh	136.67	156.61	168.31	166.29	167.80	-0.30%
E1A3	IBT BLOCK 2 351 - 600 kWh	c/kWh	200.72	230.01	247.19	166.29	216.28	-12.51%
E1A4	IBT BLOCK 3 > 600 kWh	c/kWh	246.62	282.6	303.71	166.29	269.35	-11.31%
E1B	4-Part, Domestic, Pre-paid, 1 PH, ≤ 60 Amp (13.8 kVA) (Including Resorts)							
E1B1	Basic Monthly charge per meter	R/POS/m	356.2	408.17	438.66	156.04	368.01	-16.11%
	Capacity charge	R/Amp/Phase/m				7.88	1.97	New
E1B2	IBT BLOCK 1 0 - 350 kWh	c/kWh	126.24	144.66	155.47	166.29	158.17	1.74%
E1B3	IBT BLOCK 2 351 - 600 kWh	c/kWh	189.15	216.75	232.94	166.29	216.28	-7.15%
E1B4	IBT BLOCK 3 > 600 kWh	c/kWh	237.06	271.65	291.94	166.29	260.53	-10.76%
E1C	2-part, Commercial, Credit, 1 ph:							
E1C1	Basic Monthly charge per meter	R/POS/m	356.2	408.17	438.66	156.04	368.01	-16.11%
	Capacity charge	R/Amp/Phase/m				12.08	3.02	New
E1C2	kWh Unit cost - Credit Meters	c/kWh	204.55	234.39	251.90	164.26	229.99	-8.70%
E1C	2-part, Commercial, PP, 1 ph							
E1C1	Basic Monthly charge per meter	R/POS/m	356.2	408.17	438.66	156.04	368.01	-16.11%
	Capacity charge	R/Amp/Phase/m				12.08	3.02	New
E1C3	kWh Unit cost - Pre-paid meters	c/kWh	192.76	220.88	237.38	164.26	229.99	-3.11%
E1D	months). Informal dwellings Indigents 50 kW/m for free.							
E1B1	Basic Monthly charge per meter (Covered by Equitable share)	R/POS/m				156.04	39.01	New
	Capacity charge (Covered by Equitable share)	R/Amp/Phase/m				7.88	1.97	New
E1D1	IBT BLOCK 1 0 - 350 kWh	c/kWh	127.62	146.24	157.16	166.29	158.17	0.64%
	IBT BLOCK 2 351 - 600 kWh	c/kWh	127.62	146.24	157.16	166.29	216.28	37.61%
	IBT BLOCK 3 > 600 kWh	c/kWh	127.62	146.24	157.16	166.29	260.53	65.77%
E1E	1 Part, Commercial, Pre-paid, 20 Amp 1 ph (Economic Development Projects)							
	Basic Monthly charge per meter	R/POS/m				156.04	39.01	New
	Capacity charge	R/Amp/Phase/m				12.08	3.02	New
E1E1	IBT BLOCK 1 0 - 350 kWh	c/kWh	220.5	252.67	271.54	164.26	244.72	-9.88%
E3	THREE PHASE: Commercial & Domestic							
E3E	4 Part, Domestic, Credit, 3 PH, ≤ 100A (70 kVA)							
E1B1	Basic Monthly charge per meter	R/POS/m	712.39	816.33	877.31	189.26	705.30	-19.61%
	Capacity charge	R/Amp/Phase/m				7.88	1.97	New
E3E2	IBT BLOCK 1 0 - 350 kWh	c/kWh	137.96	158.09	169.90	166.29	159.28	-6.25%
E3E3	IBT BLOCK 2 351 - 600 kWh	c/kWh	201.55	230.96	248.21	166.29	216.99	-12.58%
E3E4	IBT BLOCK 3 > 600 kWh	c/kWh	245.09	280.85	301.83	166.29	259.17	-14.13%
E3E	4-Part, Domestic, Pre-paid, 3 PH, ≤ 100A (70 kVA)							
E1B1	Basic Monthly charge per meter	R/POS/m	712.39	816.33	877.31	189.26	705.30	-19.61%
	Capacity charge	R/Amp/Phase/m				7.88	1.97	New
E3E6	IBT BLOCK 1 0 - 350 kWh	c/kWh	127.45	146.04	156.95	166.29	159.28	1.49%
E3E7	IBT BLOCK 2 351 - 600 kWh	c/kWh	189.93	217.64	233.90	166.29	216.99	-7.23%
E3E8	IBT BLOCK 3 > 600 kWh	c/kWh	235.59	269.96	290.13	166.29	259.17	-10.67%
E3E	2-Part, Commercial, Credit, 3 PH, ≤ 100A (70 kVA)							
E3E9	Basic Monthly charge per meter R	R/POS/m	712.39	816.33	877.31	189.26	705.30	-19.61%
	Capacity charge	R/Amp/Phase/m				12.08	3.02	New
E3E10	kWh Unit charge	c/kWh	204.55	234.39	251.90	164.26	229.99	-8.70%
E3E	2-Part, Commercial, Pre-paid, 3 PH, ≤ 100A (70 kVA)							
E3E11	Basic Monthly charge per meter	R/POS/m	712.39	816.33	877.31	189.26	705.30	-19.61%
	Capacity charge	R/Amp/Phase/m				12.08	3.02	New
E3E12	kWh Unit charge	c/kWh	192.76	220.88	237.38	164.26	219.10	-7.70%
E3G	1-Part, Pre-paid, 20 Amp Businesses, Flats, Sport, Churches.(≥ 800kWh/m 12 months)							
	Basic Monthly charge per meter	R/POS/m				156.04	39.01	New
	Capacity charge	R/Amp/Phase/m				12.08	3.02	New
E3G1	kWh Unit charge	c/kWh	243.29	278.79	299.62	164.26	265.78	-11.29%
E5	TIME OF USE TARIFF: MV							
E5A1	Basic charge	R/POS/m	3387.47	3881.7	4 171.66	2 848.79	3 840.94	-7.93%
E5A3	Network Capacity Charge kVA: Notified Maximum Demand	R/kVA/m	25.39	30.52	32.80	38.76	34.29	4.54%
E5A2	Network Demand Charge kVA: Utilised capacity	R/kVA/m	31.9	38.29	41.15	74.90	49.59	20.50%
E5A6	Hi-Demand: Peak kWh Unit Charge	c/kWh	328.89	376.88	405.03	516.52	432.90	6.88%
E5A5	Hi-Demand: Standard kWh Unit Charge	c/kWh	101.2	115.97	124.63	180.91	138.70	11.29%
E5A4	Hi-Demand: Off Peak kWh Unit Charge	c/kWh	56.22	64.42	69.23	114.29	80.50	16.27%
E5A9	Low Demand: Peak kWh Unit Charge	c/kWh	328.89	376.88	405.03	192.11	351.80	-13.14%
E5A8	Low Demand: Standard kWh Unit Charge	c/kWh	101.2	115.97	124.63	143.16	129.27	3.72%
E5A7	Low Demand: Off Peak kWh Unit Charge	c/kWh	56.22	64.42	69.23	103.63	77.83	12.42%
	Reactive Energy charge	c/kkvarh				19.51	4.88	New
E5	TIME OF USE TARIFF: LV							
E5A1	Basic charge	R/POS/m	3445.29	3433	3 689.45	776.49	2 961.21	-19.74%
E5A3	Network Capacity Charge kVA: Notified Maximum Demand	R/kVA/m	25.39	30.52	32.80	57.31	38.93	18.68%
E5A2	Network Demand Charge kVA: Utilised capacity	R/kVA/m	31.9	38.29	41.15	117.80	60.31	46.56%
E5A6	Hi-Demand: Peak kWh Unit Charge	c/kWh	333.12	381.72	410.23	520.19	437.72	6.70%
E5A5	Hi-Demand: Standard kWh Unit Charge	c/kWh	105.41	120.79	129.81	184.59	143.51	10.55%
E5A4	Hi-Demand: Off Peak kWh Unit Charge	c/kWh	60.45	69.27	74.44	117.96	85.32	14.61%
E5A9	Low Demand: Peak kWh Unit Charge	c/kWh	333.12	381.72	410.23	195.78	356.62	-13.07%
E5A8	Low Demand: Standard kWh Unit Charge	c/kWh	105.41	120.79	129.81	146.83	134.07	3.28%
E5A7	Low Demand: Off Peak kWh Unit Charge	c/kWh	60.45	69.27	74.44	107.30	82.66	11.03%
	Reactive Energy charge	c/kkvarh				19.51	4.88	New

OVERSTRAND ELECTRICITY TARIFF SCHEDULE			2020/2021	2021/2022	2022/2023	2022/2023	2023/2024	
Tariff Code	Details		Exclude VAT	Exclude VAT	After increase	Restructured	Restructured with phase in and increase	2022/2023 to 2023/2024 Increase
E5	TIME OF USE TARIFF SMALL CUSTOMER <100 kVA							
E5A1	Basic charge	R/POS/m				358.27	358.27	New
E5A3	Network Capacity Charge R/Amp/phase/month	R/kVA/m				9.98	9.98	New
E5A6	Hi-Demand: Peak kWh Unit Charge	c/kWh				521.49	521.49	New
E5A5	Hi-Demand: Standard kWh Unit Charge	c/kWh				185.89	185.89	New
E5A4	Hi-Demand: Off Peak kWh Unit Charge	c/kWh				119.27	119.27	New
E5A9	Low Demand: Peak kWh Unit Charge	c/kWh				197.08	197.08	New
E5A8	Low Demand: Standard kWh Unit Charge	c/kWh				148.13	148.13	New
E5A7	Low Demand: Off Peak kWh Unit Charge	c/kWh				108.60	108.60	New
	Reactive Energy charge	c/kkvarh				19.51	19.51	New
E18	SMALL SCALE EMBEDDED GENERATION FEED-IN (SSEG)							
E18A2	Feed-in Tariff c/kWh	c/kWh	-73.22	-83.9				
E18A3	Hi-Demand: Peak kWh Unit Charge	c/kWh		-83.9		(398.94)	(398.94)	375.50%
E18A4	Hi-Demand: Standard kWh Unit Charge	c/kWh		-83.9		(120.84)	(120.84)	44.03%
E18A5	Hi-Demand: Off Peak kWh Unit Charge	c/kWh		-83.9		(65.64)	(65.64)	-21.77%
E18A6	Low Demand: Peak kWh Unit Charge	c/kWh		-83.9		(130.12)	(130.12)	55.09%
E18A7	Low Demand: Standard kWh Unit Charge	c/kWh		-83.9		(89.56)	(89.56)	6.74%
E18A8	Low Demand: Off Peak kWh Unit Charge	c/kWh		-83.9		(56.80)	(56.80)	-32.30%
	Sundry Charges							
E5A10	Exceed NOTIFIED MAXIMUM DEMAND (NMD) per kVA	R/kVA/m	1039.84	1191.55	1 280.56	1 280.56	1 280.56	0.00%
E6	SUBSIDIZED TARIFFS: Grant to be shown separately							
E6A	Residential Indigent as per paragraph A of the Indigent Policy	R/POS/m	356.2	408.17	438.66	408.17	NA	
E6B	Residential Indigent as per paragraph B, C & D of the Indigent Policy	R/POS/m	291.6	291.6	313.38	291.6	NA	
E7	PUBLIC LIGHTING & CCTV							
E7A1	Streetlights & CCTV (metered) per kWh (no basic charge)	c/kWh	88.87	101.84	109.45	253.03	145.34	32.80%
E7A2	Streetlights & CCTV (consumption) (per 100 Watt / month)	R/light/m	31.18	35.73	38.40	88.51	50.84	32.40%
E7A5	Illuminated street sign boards (consumption) (per 100 Watt / month)	R/light/m	31.18	35.73	38.40	88.51	50.84	32.40%
	Maintenance charge	R/light/m				109.39	27.35	New
E8	CASUAL SUPPLIES							
E8A1	Per connection includes disconnection excluding hire of kiosk	R/POS/m	1227.61	1406.72	1 511.80	1 511.80	1 511.80	0.00%
E8A2	Consumption per day if not metered	R/day	79.76	91.4	98.23	98.23	98.23	0.00%
E8A3	Hire of temporary distribution kiosk, per kiosk, per occasion	R/kiosk/event	481.05	551.24	592.42	592.42	592.42	0.00%
E8A4	Deposit (Usage will be subtracted)	Rand		1656	1 779.70	1 779.70	1 779.70	0.00%
E8A5	One part tariff : Prepaid or Credit Casual Supply	c/kWh	241.94	277.24	297.95	297.95	297.95	0.00%
E9	Availability: NETWORK CHARGES: SERVICED LAND							
E9A1	Network charge per serviced plot per month	R/POS/m	356.2	408.17	438.66	485.29	463.74	5.72%
E9A2	Infrastructure per vacant plot per month	R/POS/m	16.65	16.65	16.65	16.65	16.65	0.00%

15. CONCLUSIONS

This detailed Ringfencing, Cost of supply and Pricing study presented many different challenges. All these have been addressed and the results obtained are considered 90% accurate. The current tariffs were found needing major changes. These will send a clear signal about the value of capacity which in time will assist the municipality in controlling its costs which are largely dictated by capacity.

The COS study must now be workshopped internally and be approved by Council and then be submitted to NERSA. Once the budget process starts the proposed tariffs need to be submitted to proper public participation. Only once NERSA approval and public participation process is completed can implementation begin.

Annexure B1: Electricity Tariff tables

OVERSTRAND MUNICIPALITY TARIFF LIST 2026/2027

ELECTRICITY TARIFFS

Tariff Code	Detail		2026/2027		2025/2026	
			Exclude VAT	Include VAT 15%	Exclude VAT	Include VAT 15%
ED	CONSUMER DEPOSITS					
ED1	Large Power User Group tariff E5 (excluding Kleinmond)	R	0.00	no vat	0.00	no vat
ED2	Large Power User Group tariff E5 Kleinmond 2 weeks highest average consumption	R	calculated	no vat	calculated	no vat
ED3	Domestic & Commercial Single Phase Credit Meter (Two Part Tariff) Electricity	R	4 231.52	no vat	3 992.00	no vat
ED4	Domestic Three Phase Credit Meter (Two Part Tariff)- Electricity	R	7 418.94	no vat	6 999.00	no vat
ED5	Commercial Three Phase Credit Meter (Two Part Tariff) - Electricity	R	16 912.30	no vat	15 955.00	no vat
ED6	Domestic & Commercial Single Phase Pre-paid (Two Part Tariff) - Electricity	R	975.20	no vat	920.00	no vat
ED7	Domestic & Commercial Three Phase Pre-paid (Two Part Tariff) - Electricity	R	1 948.28	no vat	1 838.00	no vat
ED8	Indigent Registered (including UISP)	R	313.76	no vat	296.00	no vat
EDD	Deposit Defaulters					
EDD1	Large Power User Group tariff E5 : Two Times average consumption during the preceding 12 months	R	calculated	no vat	calculated	no vat
EDD2	Domestic & Commercial Single Phase Credit Meter (Two Part Tariff) Electricity : Two Times average consumption during the preceding 12 months	R	calculated	no vat	calculated	no vat
EDD3	Domestic Three Phase Credit Meter (Two Part Tariff)- Electricity : Two Times average consumption during the preceding 12 months	R	calculated	no vat	calculated	no vat
EDD4	Commercial Three Phase Credit Meter (Two Part Tariff) - Electricity : Two Times average consumption during the preceding 12 months	R	calculated	no vat	calculated	no vat
EF	FIXED CHARGES					
EF1	Infrastructure Charge per Meter per month (No 1 end date 30 June 2026)	R	0.00	0.00	16.65	19.15
E1	SINGLE PHASE : DOMESTIC					
E1A	Two-Part Tariff: Credit meters 60 Amp (13.8 kVA BDMD) (Including Resorts)					
EB1A	Basic Monthly charge per meter per month	R	342.56	393.94	413.97	476.07
EC	Capacity Charge per Amp/Phase/Month	R	8.93	10.27	5.48	6.30
EC1D	Capacity Charge : 60Amp	R	535.80	616.17	328.80	378.12
	kWH Unit cost					
E1A2	IBT BLOCK 1 0 - 350 kWh	c	252.04	289.85	232.91	267.85
E1A3	IBT BLOCK 2 351 - 600 kWh	c	281.84	324.12	287.82	330.99
E1A4	IBT BLOCK 3 > 600 kWh	c	303.19	348.67	327.17	376.25
E1B	Two-Part Tariff: Pre-paid up to 60 Amp (13.8 kVA BDMD) (Including Resorts)					
EB1B	Basic Monthly charge per meter per month	R	342.56	393.94	413.97	476.07
EC	Capacity Charge per Amp/Phase/Month	R	8.93	10.27	5.48	6.30
EC1A	Capacity Charge : 30Amp	R	267.90	308.09	164.40	189.06
EC1B	Capacity Charge : 40Amp	R	357.20	410.78	219.20	252.08
EC1C	Capacity Charge : 50Amp	R	446.50	513.48	274.00	315.10
EC1D	Capacity Charge : 60Amp	R	535.80	616.17	328.80	378.12
	kWH Unit cost					
E1B2	IBT BLOCK 1 0 - 350 kWh	c	247.19	284.27	223.97	257.57
E1B3	IBT BLOCK 2 351 - 600 kWh	c	276.45	317.92	277.90	319.59

OVERSTRAND MUNICIPALITY TARIFF LIST 2026/2027

Tariff Code	Detail		2026/2027		2025/2026	
			Exclude VAT	Include VAT 15%	Exclude VAT	Include VAT 15%
E1B4	IBT BLOCK 3 > 600 kWh	c	298.74	343.55	318.97	366.82
E1C	SINGLE PHASE : COMMERCIAL					
EB1C	Basic Monthly charge per meter per month	R	342.56	393.94	413.97	476.07
EC	Capacity Charge per Amp/Phase/Month	R	13.69	15.74	8.41	9.67
EC2A	Capacity Charge : 30Amp	R	410.70	472.31	252.30	290.15
EC2B	Capacity Charge : 40Amp	R	547.60	629.74	336.40	386.86
EC2C	Capacity Charge : 50Amp	R	684.50	787.18	420.50	483.58
EC2D	Capacity Charge : 60Amp	R	821.40	944.61	504.60	580.29
	kWH Unit cost					
E1C2	kWH Unit cost - Credit Meters	c	281.32	323.52	289.69	333.14
E1C3	kWH Unit cost - Pre-paid meters	c	275.83	317.20	279.58	321.52
E1D	Life Line Two part tariff (Pre-paid meters only) ≤ 30 Amp. Only available to Informal dwellings in informal areas					
E1D1	Supply Basic Monthly charge per meter per month	R	176.84	203.37	108.62	124.91
EC	Supply Capacity Charge per Amp/Phase/Month	R	8.93	10.27	5.48	6.30
EC1D	Supply Capacity Charge : 30Amp	R	267.90	308.09	164.40	189.06
	kWH Unit cost					
E1B2	IBT BLOCK 1 0 - 350 kWh	c	247.19	284.27	223.97	257.57
E1B3	IBT BLOCK 2 351 - 600 kWh	c	276.45	317.92	277.90	319.59
E1B4	IBT BLOCK 3 > 600 kWh	c	298.74	343.55	318.97	366.82
E1E	Two part tariff (Pre-paid meters only) Local Economic Development Projects					
E1E1	Basic Monthly charge per meter per month	R	176.84	203.37	108.62	124.91
EC	Capacity Charge per Amp/Phase/Month	R	13.69	15.74	8.41	9.67
EC2A	Capacity Charge : 30Amp	R	410.70	472.31	252.30	290.15
EC2B	Capacity Charge : 40Amp	R	547.60	629.74	336.40	386.86
EC2C	Capacity Charge : 50Amp	R	684.50	787.18	420.50	483.58
EC2D	Capacity Charge : 60Amp	R	821.40	944.61	504.60	580.29
	kWH Unit cost					
E1E1	IBT BLOCK 1 0 - 350 kWh Unit cost	c	299.34	344.24	303.36	348.86
E3	THREE PHASE: COMMERCIAL & DOMESTIC					
E3E	Two-Part Tariff: Credit up to 100A (70 kVA BDMD) DOMESTIC					
EB2A	Basic Monthly charge per meter per month	R	545.92	627.81	742.44	853.81
EC	Capacity Charge per Amp/Phase/Month	R	8.93	10.27	5.48	6.30
EC3A	Capacity Charge : 40Amp	R	1 071.60	1 232.34	657.60	756.24
EC3B	Capacity Charge : 60Amp	R	1 607.40	1 848.51	986.40	1 134.36
EC3C	Capacity Charge : 80Amp	R	2 143.20	2 464.68	1 315.20	1 512.48
EC3D	Capacity Charge : 100Amp	R	2 679.00	3 080.85	1 644.00	1 890.60
	kWH Unit cost					
E3E2	IBT BLOCK 1 0 - 350 kWh	c	252.64	290.54	225.76	259.62
E3E3	IBT BLOCK 2 351 - 600 kWh	c	282.22	324.55	288.53	331.81
E3E4	IBT BLOCK 3 > 600 kWh	c	302.48	347.85	325.86	374.74
E3E	Two-Part Tariff: Pre-paid up to 100A (70 kVA BDMD) DOMESTIC					
EB2B	Basic Monthly charge per meter per month	R	545.92	627.81	742.44	853.81

OVERSTRAND MUNICIPALITY TARIFF LIST 2026/2027

Tariff Code	Detail		2026/2027		2025/2026	
			Exclude VAT	Include VAT 15%	Exclude VAT	Include VAT 15%
EC	Capacity Charge per Amp/Phase/Month	R	8.93	10.27	5.48	6.30
EC3A	Capacity Charge : 40Amp	R	1 071.60	1 232.34	657.60	756.24
EC3B	Capacity Charge : 60Amp	R	1 607.40	1 848.51	986.40	1 134.36
EC3C	Capacity Charge : 80Amp	R	2 143.20	2 464.68	1 315.20	1 512.48
EC3D	Capacity Charge : 100Amp	R	2 679.00	3 080.85	1 644.00	1 890.60
	kWh Unit cost					
E3E6	IBT BLOCK 1 0 - 350 kWh	c	247.75	284.91	225.00	258.75
E3E7	IBT BLOCK 2 351 - 600 kWh	c	276.81	318.33	278.57	320.36
E3E8	IBT BLOCK 3 > 600 kWh	c	298.06	342.77	317.71	365.37
E3E	Two-Part Tariff: Credit up to 100A (70 kVA BDMD) COMMERCIAL					
EB2C	Basic Monthly charge per meter per month	R	545.92	627.81	742.44	853.81
EC	Capacity Charge per Amp/Phase/Month	R	13.96	16.05	8.41	9.67
EC3A	Capacity Charge : 40Amp	R	1 675.20	1 926.48	1 009.20	1 160.58
EC3B	Capacity Charge : 60Amp	R	2 512.80	2 889.72	1 513.80	1 740.87
EC3C	Capacity Charge : 80Amp	R	3 350.40	3 852.96	2 018.40	2 321.16
EC3D	Capacity Charge : 100Amp	R	4 188.00	4 816.20	2 523.00	2 901.45
E3E3	kWh Unit cost	c	275.83	317.20	289.69	333.14
E3E	Two-Part Tariff: Pre-paid up to 100A (70 kVA BDMD) COMMERCIAL					
EB2D	Basic Monthly charge per meter per month	R	545.92	627.81	742.44	853.81
EC	Capacity Charge per Amp/Phase/Month	R	13.69	15.74	8.41	9.67
EC3A	Capacity Charge : 40Amp	R	1 642.80	1 889.22	1 009.20	1 160.58
EC3B	Capacity Charge : 60Amp	R	2 464.20	2 833.83	1 513.80	1 740.87
EC3C	Capacity Charge : 80Amp	R	3 285.60	3 778.44	2 018.40	2 321.16
EC3D	Capacity Charge : 100Amp	R	4 107.00	4 723.05	2 523.00	2 901.45
E3E4	kWh Unit cost	c	275.83	317.20	279.58	321.52
E3G	One-Part Tariff: Pre-paid only; up to 100A (70 kVA BDMD) Businesses, Flats, Sport grounds, Churches.(minimum of 800kWh average for twelve months)					
E1E1	Basic Monthly charge per meter per month	R	176.84	203.37	108.62	124.91
EC	Capacity Charge per Amp/Phase/Month	R	13.69	15.74	8.41	9.67
EC3A	Capacity Charge : 40Amp	R	1 642.80	1 889.22	1 009.20	1 160.58
EC3B	Capacity Charge : 60Amp	R	2 464.20	2 833.83	1 513.80	1 740.87
EC3C	Capacity Charge : 80Amp	R	3 285.60	3 778.44	2 018.40	2 321.16
EC3D	Capacity Charge : 100Amp	R	4 107.00	4 723.05	2 523.00	2 901.45
E3G1	kWh Unit cost	c	323.99	372.59	323.99	372.59
E5	TIME OF USE TARIFF					
E5A	TIME OF USE TARIFF MV					
E5A1	Basic charge	R	4 804.52	5 525.20	4 886.95	5 619.99
E5A2	Network Capacity Charge kVA: Notified Maximum Demand (NMD)	R	56.32	64.77	49.81	57.28
E5A3	Network Demand Charge kVA: Utilised capacity	R	100.43	115.49	80.78	92.90
E5A4	Hi-Demand: Peak kWh Unit Charge	C	751.48	864.20	649.53	746.96
E5A5	Hi-Demand: Standard kWh Unit Charge	C	254.00	292.10	213.85	245.93
E5A6	Hi-Demand: Off Peak kWh Unit Charge	C	155.35	178.65	127.55	146.68

OVERSTRAND MUNICIPALITY TARIFF LIST 2026/2027

Tariff Code	Detail		2026/2027		2025/2026		
			Exclude VAT	Include VAT 15%	Exclude VAT	Include VAT 15%	
E5A7	Low Demand: Peak kWh Unit Charge	C	373.00	428.95	417.06	479.62	
E5A8	Low Demand: Standard kWh Unit Charge	C	209.96	241.45	186.80	214.82	
E5A9	Low Demand: Off Peak kWh Unit Charge	C	142.91	164.35	119.90	137.89	
E5A10	Reactive Energy charge, per kilo volt amps reactive hours	C	19.21	22.09	11.84	13.62	
E5B	TIME OF USE TARIFF LV						
E5B1	Basic charge	R	2 273.78	2 614.85	3 108.74	3 575.05	
E5B2	Network Capacity Charge kVA: Notified Maximum Demand (NMD)	R	77.34	88.94	62.72	72.13	
E5B3	Network Demand Charge kVA: Utilised capacity	R	149.05	171.41	110.64	127.24	
E5B4	Hi-Demand: Peak kWh Unit Charge	C	757.06	870.62	655.38	753.69	
E5B5	Hi-Demand: Standard kWh Unit Charge	C	259.58	298.52	219.68	252.63	
E5B6	Hi-Demand: Off Peak kWh Unit Charge	C	160.93	185.07	133.39	153.40	
E5B7	Low Demand: Peak kWh Unit Charge	C	378.58	435.37	422.90	486.34	
E5B8	Low Demand: Standard kWh Unit Charge	C	215.53	247.86	192.62	221.51	
E5B9	Low Demand: Off Peak kWh Unit Charge	C	148.49	170.76	125.75	144.61	
E5B10	Reactive Energy charge, per kilo volt amps reactive hours	C	19.21	22.09	11.80	13.57	
E5C	TIME OF USE TARIFF SMALL CUSTOMER <100 kVA						
E5C1	Basic charge	R	507.88	584.06	468.09	538.30	
E5C2	Network Capacity Charge kVA: Notified Maximum Demand (NMD)	R	62.94	72.38	62.94	72.38	
E5C3	Hi-Demand: Peak kWh Unit Charge	C	804.49	925.16	741.46	852.68	
E5C4	Hi-Demand: Standard kWh Unit Charge	C	282.42	324.78	260.30	299.35	
E5C5	Hi-Demand: Off Peak kWh Unit Charge	C	178.79	205.61	164.78	189.50	
E5C6	Low Demand: Peak kWh Unit Charge	C	299.84	344.82	276.35	317.80	
E5C7	Low Demand: Standard kWh Unit Charge	C	223.69	257.24	206.17	237.10	
E5C8	Low Demand: Off Peak kWh Unit Charge	C	162.20	186.53	149.49	171.91	
E5C9	Reactive Energy charge, per kilo volt amps reactive hours	C	25.61	29.45	23.61	27.15	
E5D	Exceed NOTIFIED MAXIMUM DEMAND (NMD) per kVA Per month R (applicable for import NMD and applicable % of export as per agreement)	R	1 935.04	2 225.30	2 114.31	2 431.46	
E6	SUBSIDIZED TARIFFS: Grant to be shown separately						
E6A	Basic Monthly Charge: Residential Indigent and Life-line consumer as per paragraph 5 of the Indigent Policy per meter (Based on Single phase basic charge + 30Amp capacity charge)	R	610.46	702.03	580.37	667.43	
E7	PUBLIC LIGHTING & CCTV						
E7A1	Streetlights & CCTV (metered) per kWh (no basic charge)	c	328.11	377.33	252.32	290.17	
E7A2	Streetlights & CCTV (consumption) (per unit/per month) (no basic charge) per 100 Watt per month	R	114.77	131.99	88.26	101.50	
E7A5	Illuminated street sign boards per month	R	114.77	131.99	88.26	101.50	
E7A6	Maintenance charge per light per month	R	123.97	142.57	34.64	39.84	
E8	CASUAL SUPPLIES						
E8A1	Per connection includes disconnection excluding hire of kiosk	R	2 112.17	2 429.00	2 112.17	2 429.00	
E8A2	Consumption per day if not metered	R	137.39	158.00	137.39	158.00	
E8A3	Hire of temporary distribution kiosk, per kiosk, per occasion	R	827.83	952.00	827.83	952.00	
E8A4	Deposit (Usage will be subtracted)	R	2 689.29	no vat	2 486.95	no vat	
E8A5	One part tariff : Prepaid or Credit Casual Supply	c	450.23	517.76	416.35	478.80	

OVERSTRAND MUNICIPALITY TARIFF LIST 2026/2027

Tariff Code	Detail		2026/2027		2025/2026	
			Exclude VAT	Include VAT 15%	Exclude VAT	Include VAT 15%
E9	NETWORK CHARGES: SERVICED LAND					
E9A1	Network charge per serviced plot per month (based on single phase basic and 60Amp capacity charge)	R	878.36	1 010.11	655.62	753.96
E9A2	Infrastructure Charge per Meter per month (No 1 end date 30 June 2026)	R	0.00	0.00	16.65	19.15
E10	SUNDRY CHARGES					
E10A1	Call-out Fee - office hours (Based on 2 hours for electr & assist + 30km)	R	1 128.44	1 297.71	991.30	1 140.00
E10A2	Call-out Fee - after hours: Weekdays & Saturdays (Based on 2 hrs (time and a half) for electr & assist + 30km)	R	1 639.11	1 884.98	1 433.91	1 649.00
E10A3	Call-out Fee - after hours: Sundays & Public Holidays (Based on 2 hrs (double time) for electr & assist + 30km)	R	2 149.78	2 472.25	1 876.52	2 158.00
E10A4	MV. Switching on Council's equipment office hours (Based on 3 hours for superintendent & electr + 60km)	R	3 242.85	3 729.28	2 884.35	3 317.00
E10A5	MV. Switching on Council's equipment -after hours: Weekdays & Saturdays (Based on 3 hours (time and a half) for a superintendent and an electrician plus 60km)	R	4 757.18	5 470.76	4 220.00	4 853.00
E10A6	MV. Switching on Council's equipment -after hours: Sundays & Public holidays (Based on 3 hours (double time) for a superintendent and an electrician plus 60km)	R	6 271.50	7 212.23	5 555.65	6 389.00
E10A7	Contractor Inspection 2nd	R	973.35	1 119.35	918.26	1 056.00
E10A8	Contractor Inspection 3rd	R	1 469.25	1 689.64	1 386.09	1 594.00
E10A9	Disconnection	R	477.46	549.08	450.44	518.00
E10A10	Reconnection	R	477.46	549.08	450.44	518.00
E10A11	Verification of a Meter Reading	R	477.46	549.08	450.44	518.00
E10A12	Administration fee - recalculation due to no meter access	R	247.94	285.13	233.91	269.00
E10A13	Test of Meter: 1 & 3 Phase (Conditionally Refundable) Internal testing	R	1 128.44	1 297.71	991.30	1 140.00
E10A14	Test of Meter: All other Meters (Conditionally Refundable) External testing	R	cost + 15%	applicable vat	cost + 15%	applicable vat
E10A15	Tariff change - change between one part and two-part	R	325.37	374.18	306.96	353.00
E10A16	Damage elect meter single-phase (based on meter cost + call out X 2)	R	4 220.84	4 853.96	3 579.13	4 116.00
E10A16A	Unintentional damage Indigent household elect meter	R	0.00	0.00	0.00	0.00
E10A17	Damage elect meter 3 phase (based on meter cost + call out X 2)	R	5 032.34	5 787.19	4 904.35	5 640.00
E10A18	Replacement of CIU (Meter keypad) (Based on keypad cost and call out fee)	R	1 978.20	2 274.93	1 698.26	1 953.00
E10A19	Damage of Bulk meter-(Based on 3 hours for a superintendent and electrician + 60km + bulk meter cost + modem cost)	R	11 048.13	12 705.35	10 488.70	12 062.00
E10A20	Commission of Bulk meter, supplied by customer (call out fee x 3)	R	3 385.32	3 893.12	2 975.65	3 422.00
E10A21	Damage of HV Cable	R	cost + R54 310,16	applicable vat	cost + R51 236.00	applicable vat
E10A22	Damage of MV Cable	R	cost + R14 206,12	applicable vat	cost + R13 402.00	applicable vat
E10A23	Damage of LV Cable	R	cost + R 5 720,82	applicable vat	cost + R 5 397.00	applicable vat
E10A24	Damage of Service Connection Cable	R	cost + R 1 431,00	applicable vat	cost + R 1 350.00	applicable vat
E10A25	Working without Way leave	R	7 331.51	8 431.24	6 916.52	7 954.00
E10A26	Refundable Wayleave deposit for HV cables	R	104 736.48	no vat	98 808.00	no vat
E10A27	Refundable Way leave deposit for MV cables	R	26 184.12	no vat	24 702.00	no vat
E10A28	Refundable Way leave deposit for LV cables	R	5 658.28	no vat	5 338.00	no vat
E10A29	Cancellation Fee of requested service	R	15% of Service Value	no vat	15% of Service Value	no vat
E10A30	Erection and removal of Banners, signs & lights (per hour) (Vehicle cost + labour)	R	1 187.20	1 365.28	1 120.00	1 288.00

OVERSTRAND MUNICIPALITY TARIFF LIST 2026/2027

Tariff Code	Detail		2026/2027		2025/2026	
			Exclude VAT	Include VAT 15%	Exclude VAT	Include VAT 15%
E10A31	Replacement of damaged overhead service connection cable (Tariff E13A9 - E10A16)	R	5 624.86	6 468.59	7 696.52	8 851.00
E10A32	Removal of Meter (based on call out fee)	R	1 128.44	1 297.71	992.17	1 141.00
E10A33	Repositioning of Meter (excl. cable) (based on call out fee)	R	1 128.44	1 297.71	992.17	1 141.00
E10A34	Repositioning of Meter (incl. cable) (based on call out fee + 30m cable)	R	8 058.44	9 267.21	7 079.13	8 141.00
E10A35	Request for bulk meter profile for 12 months per request (Based on 3 hours for Snr Superintendent + 30km)	R	1 938.45	2 229.22	1 756.52	2 020.00
E11	UPGRADE OR DOWNGRADE (Network dependant)					
E11A1	Change of Circuit Breaker - S/Phase(1/annum) contact Electricity Department for approval (Based on Circuit Breaker cost + 1 hour for an electrician and assistant + 30km)	R	842.78	969.20	808.70	930.00
E11A2	Change of Circuit Breaker - 3 Phase(1/annum) contact Electricity Department for approval (Based on Circuit Breaker cost + 1 hour for an electrician and assistant + 30km)	R	1 957.97	2 251.67	1 912.17	2 199.00
E11A3	Change of Circuit Breaker - Bulk (1/annum) contact Electricity Department for approval (Based on JSO Breaker cost + 1 hour for an electrician and assistant + 30km)	R	4 746.78	5 458.80	new	new
E12	CONVERSION OF METERS					
E12A1	Convert Credit Meter to Pre-paid: SP (no cable work) (based on meter cost + call out)	R	3 092.40	3 556.26	2 587.83	2 976.00
E12A2	Convert Credit Meter to Pre-paid: 3P (no cable work) (based on meter cost + call out)	R	3 903.90	4 489.49	3 913.04	4 500.00
E12A3	Convert Credit Three Phase to Single Phase Pre-paid meter (based on meter cost + call out + CB)	R	3 317.41	3 815.02	2 846.96	3 274.00
E12A4	Convert Credit Three Phase to Single Phase Credit (Commercial only)	R	2 203.44	2 533.96	2 140.00	2 461.00
E12A5	Convert Pre-paid Single Phase to Three Phase Pre-paid (based on tariff E13A8) cost includes cable to boundary	R	R19 999,42 + ext fee	applicable vat	R17 585.00 + ext fee	applicable vat
E12A6	Convert pre-paid Three phase to Single phase pre-paid (based on meter cost + call out + CB)	R	3 317.41	3 815.02	2 846.96	3 274.00
E12A7	Change to Time of Use (with existing bulk meter) + Deposit	R	1 128.44	1 297.71	992.17	1 141.00
E12A8	Change to Time of Use (without existing bulk meter) + Deposit	R	12 705.35	14 611.15	11 480.00	13 202.00
E12A9	Change to SSEG Three Phase	R	11 048.13	12 705.35	10 488.70	12 062.00
E12A10	Change to SSEG Single Phase	R	6 070.00	6 980.50	5 337.39	6 138.00
E13	SERVICE CONNECTIONS					
E13A1	Builders connection (plus applicable service connection tariff)	R	1 260.02	1 449.02	1 188.70	1 367.00
E13A4	Single Phase (Credit - 60A) option for Commercial users only (Based on 30m cable + meter cost + average labour cost + 15% admin fee)	R	10 121.54	11 639.77	9 659.13	11 108.00
E13A6	Single Phase - (Pre-paid meters - 60A) applicable to Domestic users (Network Permitted) (Based on: 30m cable + meter cost + average labour cost + 15% admin fee)	R	10 121.54	11 639.77	9 659.13	11 108.00
E13A7	Three Phase : (Credit - 60A) Plus Extension fee : Extension fee not applicable to Industrial even up to 60 Amp (Based on 30m (25mm) cable + meter cost + average labour +circuit breaker + 15% admin fee)	R	R19 999,42 + ext fee	applicable vat	R17 585.00 + ext fee	applicable vat
E13A8	Three Phase : (Pre-paid - 60A) Plus Extension fee : Extension fee not applicable to Industrial even up to 60 Amp (Based on 30m (25mm) cable + meter cost + average labour +circuit breaker + 15% admin fee)	R	R19 999,42 + ext fee	applicable vat	R17 585.00 + ext fee	applicable vat
E13A9	Non Standard : Pre-paid 30 Amp Single phase (Sub economic connections) (Based on 30m (10mm) cable + meter cost + average labour cost + 15% admin fee)	R	9 845.70	11 322.56	9 395.65	10 805.00

OVERSTRAND MUNICIPALITY TARIFF LIST 2026/2027

Tariff Code	Detail		2026/2027		2025/2026	
			Exclude VAT	Include VAT 15%	Exclude VAT	Include VAT 15%
E13A10	Non Standard : Pre-paid 30 Amp Single phase - FLISP and approved municipal housing areas (only applicable for pre-approved areas - areas to be confirmed with Electrical Department)	R	5 216.69	5 999.19	new	new
E13A14	Any other none standard connections		cost + 15% admin	applicable vat	cost + 15% admin	applicable vat
E14	ILLEGAL AND UNSAFE CONNECTION / TAMPERING FEE (Including SSEG and damage or bypass of the DSM Hot Water Cylinder Control Unit)					
E14A1	1 st Offence	R	5 806.68	no vat	5 478.00	no vat
E14A2	2 nd Offence (E14A1 X 2)	R	11 613.36	no vat	10 955.00	no vat
E14A3	3 rd Offence and re-occurrence (Disconnection of service and remedial action fee = double previous* offence fee) *based on current tariffs		2 X E14A2	no vat	2 X E14A2	no vat
E14A4	Unsafe / Illegal supply of electricity (per visit) (reconnection fee included)	R	2 601.24	no vat	2 454.00	no vat
E15	UPGRADING CONTRIBUTIONS (BULK INFRASTRUCTURE CONTRIBUTION LEVIES - BICL) (Network permitted : to be approved by Electricity Department)					
E15A1	Primary Cost p/kVA -include all HV Equipment UP to HV Substation or identified point of supply excluding Dist. TF	R	1 619.50	1 862.42	1 527.83	1 757.00
E15A2	Primary Cost p/kVA -include all MV. Equipment UP to Main Substation or identified point of supply excluding Dist. TF	R	4 822.68	5 546.08	5 649.57	6 497.00
E15A3	Secondary Cost p/kVA -include all MV. Equipment UP to Main Substation or identified point of supply including Dist. TF	R	5 877.93	6 759.62	4 549.70	5 232.16
E15A4	Secondary Cost p/kVA -include all MV. Equipment UP to Main Substation or identified point of supply including Dist. TF and Kiosk	R	7 668.87	8 819.20	7 234.78	8 320.00
E15A5	Buying/Refund of spare capacity cost/kVA	R	100% of approved installation cost	applicable vat	100% of approved installation cost	applicable vat
E15A6	Investigation Fee	R	5 761.79	6 626.06	5 435.65	6 251.00
E15A7	FACTOR OF 0,36 APPLICABLE ON DOMESTIC USERS : TARIFF : applicable on E15A3 AND E15A4 (Commercial /Business no factor apply)	R	Factor 0.36	applicable vat	Factor 0.36	applicable vat
E18	SMALL SCALE EMBEDDED GENERATION (SSEG)					
	This tariff is available only for approved SSEG connections, where the customers offset their small scale generation against purchases from the Municipality, provided that their purchases exceed their generation. The consumer will stay on his existing tariff (All prepaid customers excluded) Prepaid customers to convert to credit meter and tariff:					
E18A2	Feed-in Tariff c/kWh (based on 80% of Eskom Standard Rate proportional over 12 months)	c	143.70	165.26	125.68	144.53
E19	WHEELING ENERGY					
	Wheeling between Generators within and outside of the Overstrand electricity networks to Overstrand consumers will be allowed on a pilot basis. This will only be done in line with the Overstrand Wheeling guideline and with approval by the Chief Engineer Infrastructure Services and the CFO. The wheeling will be done to ensure revenue neutrality for the Overstrand Municipality. The consumers must be on one of the relevant Overstrand TOU tariffs and an additional basic admin and reconciliation charge will apply to the respective consumers. Generators within the Overstrand network will be charged at the standard TOU tariff in respect of their own consumption. A use of system charge will be payable for consumers or off-takers or generators within the Overstrand Municipality network. The Implicit use of system charges (or wheeling credit method) is used by Overstrand. The wheeling energy credit is to the value of the wholesale electricity pricing structure (WEPS) less losses. In cases of wheeling from a generator outside of the Overstrand network through Eskom, any additional charges relating to the wheeling will be charged to the off-taker.					
E19A2	TIME OF USE TARIFF MV: Admin and reconciliation charge per off-taker	R	507.88	584.06	467.83	538.00

OVERSTRAND MUNICIPALITY TARIFF LIST 2026/2027

Tariff Code	Detail		2026/2027		2025/2026	
			Exclude VAT	Include VAT 15%	Exclude VAT	Include VAT 15%
E19A3	TIME OF USE TARIFF LV: Admin and reconciliation charge per off-taker	R	507.88	584.06	467.83	538.00
E19A4	TIME OF USE TARIFF SMALL CUSTOMER <100 kVA: Admin and reconciliation charge per off-taker	R	507.88	584.06	467.83	538.00
DC2	DEVELOPMENT CONTRIBUTIONS (BULK INFRASTRUCTURE CONTRIBUTION LEVIES - BICL)					
DC2A	Sub Division of existing erf					
DC2A1	Single Phase 60 AMP (5 kVA) Domestic X Tariff E15A4 = P/ERF PLUS STANDARD CONNECTION FEES	R	38 344.33	44 095.98	36 173.91	41 600.00
DC2B	New Developments					
DC2B1	Standard fee per Singel Phase Domestic erf - infrastructure provide by developer (13.8 kVA xE15A2 x.36)	R	23 959.08	27 552.95	22 602.61	25 993.00
DC2B2	Standard fee per Three Phase Domestic erf - infrastructure provide by developer (42kVA x E15A2x.36)	R	72 918.95	83 856.79	68 791.30	79 110.00
DC2C	MV/LV Bulk Supply with metering point cost / kVA= Tariff E15A2	R	4 822.68	5 546.08	4 549.57	5 232.00
DC2C1	LV Bulk Supply if capacity is available on existing TF cost / kVA = Tariff E15A3	R	5 877.93	6 759.62	5 545.22	6 377.00

Annexure B2: Baskets of Electricity Tariffs

OVERSTRAND MUNICIPALITY: BASKET OF ELECTRICITY TARIFFS 2026/2027

MONTHLY BASKET OF TARIFFS - RESIDENTIAL, INDIGENT, LIFE-LINE & BUSINESS

Residential	Year		Increase/Decrease	
	2025/2026	2026/2027	Amount	%
High Consumption with PREPAID elect meter				
Electricity	1000 kWh	60A		
Basic			413.97	342.56
Capacity Charge			328.80	535.80
	Sub-total		742.77	878.36
Block - 0 - 350 kWh	350		783.90	865.17
351 - 600 kWh	250		694.75	691.13
> 600 kWh	400		1 275.88	1 194.96
SUB-TOTAL			3 497.30	3 629.61
VAT			524.59	544.44
TOTAL			4 021.89	4 174.05
			132.32	3.78
			19.85	3.78
			152.16	3.78

Residential	Year		Increase/Decrease	
	2025/2026	2026/2027	Amount	%
High Consumption with PREPAID elect meter				
Electricity	1000 kWh	50A		
Basic			413.97	342.56
Capacity Charge			274.00	446.50
	Sub-total		687.97	789.06
Block - 0 - 350 kWh	350		783.90	865.17
351 - 600 kWh	250		694.75	691.13
> 600 kWh	400		1 275.88	1 194.96
SUB-TOTAL			3 442.50	3 540.31
VAT			516.37	531.05
TOTAL			3 958.87	4 071.36
			101.09	14.69
			81.27	10.37
			-3.63	-0.52
			-80.92	-6.34
			97.81	2.84
			14.67	2.84
			112.49	2.84

Residential	Year		Increase/Decrease	
	2025/2026	2026/2027	Amount	%
High Consumption with PREPAID elect meter				
Electricity	1000 kWh	40A		
Basic			413.97	342.56
Capacity Charge			219.20	357.20
	Sub-total		633.17	699.76
Block - 0 - 350 kWh	350		783.90	865.17
351 - 600 kWh	250		694.75	691.13
> 600 kWh	400		1 275.88	1 194.96
SUB-TOTAL			3 387.70	3 451.01
VAT			508.15	517.65
TOTAL			3 895.85	3 968.66
			66.59	10.52
			81.27	10.37
			-3.63	-0.52
			-80.92	-6.34
			63.31	1.87
			9.50	1.87
			72.81	1.87

Residential	Year		Increase/Decrease	
	2025/2026	2026/2027	Amount	%
High Consumption with PREPAID elect meter				
Electricity	1000 kWh	30A		
Basic			413.97	342.56
Capacity Charge			164.40	267.90
	Sub-total		578.37	610.46
Block - 0 - 350 kWh	350		783.90	865.17
351 - 600 kWh	250		694.75	691.13
> 600 kWh	400		1 275.88	1 194.96
SUB-TOTAL			3 332.90	3 361.71
VAT			499.93	504.26
TOTAL			3 832.83	3 865.97
			32.09	5.55
			81.27	10.37
			-3.63	-0.52
			-80.92	-6.34
			28.81	0.86
			4.32	0.86
			33.14	0.86

OVERSTRAND MUNICIPALITY: BASKET OF ELECTRICITY TARIFFS 2026/2027

Residential	Year		Increase/Decrease	
	2025/2026	2026/2027	Amount	%
Medium Consumption with PREPAID elect meter				
Electricity	800 kWh	60A		
Basic			413.97	342.56
Capacity Charge			328.80	535.80
		Sub-total	742.77	878.36
Block - 0 - 350 kWh	350		783.90	865.17
351 - 600 kWh	250		694.75	691.13
> 600 kWh	200		637.94	597.48
SUB-TOTAL			2 859.36	3 032.13
VAT			428.90	454.82
TOTAL			3 288.26	3 486.95
			198.69	6.04

Residential	Year		Increase/Decrease	
	2025/2026	2026/2027	Amount	%
Medium Consumption with PREPAID elect meter				
Electricity	800 kWh	50A		
Basic			413.97	342.56
Capacity Charge			274.00	446.50
		Sub-total	687.97	789.06
Block - 0 - 350 kWh	350		783.90	865.17
351 - 600 kWh	250		694.75	691.13
> 600 kWh	200		637.94	597.48
SUB-TOTAL			2 804.56	2 942.83
VAT			420.68	441.42
TOTAL			3 225.24	3 384.25
			159.02	4.93

Residential	Year		Increase/Decrease	
	2025/2026	2026/2027	Amount	%
Medium Consumption with PREPAID elect meter				
Electricity	800 kWh	40A		
Basic			413.97	342.56
Capacity Charge			219.20	357.20
		Sub-total	633.17	699.76
Block - 0 - 350 kWh	350		783.90	865.17
351 - 600 kWh	250		694.75	691.13
> 600 kWh	200		637.94	597.48
SUB-TOTAL			2 749.76	2 853.53
VAT			412.46	428.03
TOTAL			3 162.22	3 281.56
			119.34	3.77

Residential	Year		Increase/Decrease	
	2025/2026	2026/2027	Amount	%
Medium Consumption with PREPAID elect meter				
Electricity	800 kWh	30A		
Basic			413.97	342.56
Capacity Charge			164.40	267.90
		Sub-total	578.37	610.46
Block - 0 - 350 kWh	350		783.90	865.17
351 - 600 kWh	250		694.75	691.13
> 600 kWh	200		637.94	597.48
SUB-TOTAL			2 694.96	2 764.23
VAT			404.24	414.63
TOTAL			3 099.20	3 178.86
			79.67	2.57

OVERSTRAND MUNICIPALITY: BASKET OF ELECTRICITY TARIFFS 2026/2027

Residential	Year		Increase/Decrease	
	2025/2026	2026/2027	Amount	%
Low Consumption with PREPAID elect meter				
Electricity	600 kWh	60A		
Basic			413.97	342.56
Capacity Charge			328.80	535.80
		Sub-total	742.77	878.36
Block - 0 - 350 kWh	350		783.90	865.17
351 - 600 kWh	250		694.75	691.13
SUB-TOTAL			2 221.42	2 434.65
VAT			333.21	365.20
TOTAL			2 554.63	2 799.85
			245.22	9.60

Residential	Year		Increase/Decrease	
	2025/2026	2026/2027	Amount	%
Low Consumption with PREPAID elect meter				
Electricity	600 kWh	50A		
Basic			413.97	342.56
Capacity Charge			274.00	446.50
		Sub-total	687.97	789.06
Block - 0 - 350 kWh	350		783.90	865.17
351 - 600 kWh	250		694.75	691.13
SUB-TOTAL			2 166.62	2 345.35
VAT			324.99	351.80
TOTAL			2 491.61	2 697.15
			205.55	8.25

Residential	Year		Increase/Decrease	
	2025/2026	2026/2027	Amount	%
Low Consumption with PREPAID elect meter				
Electricity	600 kWh	40A		
Basic			413.97	342.56
Capacity Charge			219.20	357.20
		Sub-total	633.17	699.76
Block - 0 - 350 kWh	350		783.90	865.17
351 - 600 kWh	250		694.75	691.13
SUB-TOTAL			2 111.82	2 256.05
VAT			316.77	338.41
TOTAL			2 428.59	2 594.46
			165.87	6.83

Residential	Year		Increase/Decrease	
	2025/2026	2026/2027	Amount	%
Low Consumption with PREPAID elect meter				
Electricity Credit Meter	600 kWh	30A		
Basic			413.97	342.56
Capacity Charge			164.40	267.90
		Sub-total	578.37	610.46
Block - 0 - 350 kWh	350		783.90	865.17
351 - 600 kWh	250		694.75	691.13
SUB-TOTAL			2 057.02	2 166.75
VAT			308.55	325.01
TOTAL			2 365.57	2 491.76
			126.20	5.33

OVERSTRAND MUNICIPALITY: BASKET OF ELECTRICITY TARIFFS 2026/2027

Residential	Year		Increase/Decrease	
	2025/2026	2026/2027	Amount	%
Low Consumption with PREPAID elect meter				
Electricity	300 kWh	60A		
Basic			413.97	342.56
Capacity Charge			328.80	535.80
		Sub-total	742.77	878.36
Block - 0 - 350 kWh	300		671.91	741.57
SUB-TOTAL			1 414.68	1 619.93
VAT			212.20	242.99
TOTAL			1 626.88	1 862.92

Residential	Year		Increase/Decrease	
	2025/2026	2026/2027	Amount	%
Low Consumption with PREPAID elect meter				
Electricity	300 kWh	50A		
Basic			413.97	342.56
Capacity Charge			274.00	446.50
		Sub-total	687.97	789.06
Block - 0 - 350 kWh	300		671.91	741.57
SUB-TOTAL			1 359.88	1 530.63
VAT			203.98	229.59
TOTAL			1 563.86	1 760.22

Residential	Year		Increase/Decrease	
	2025/2026	2026/2027	Amount	%
Low Consumption with PREPAID elect meter				
Electricity	300 kWh	40A		
Basic			413.97	342.56
Capacity Charge			219.20	357.20
		Sub-total	633.17	699.76
Block - 0 - 350 kWh	300		671.91	741.57
SUB-TOTAL			1 305.08	1 441.33
VAT			195.76	216.20
TOTAL			1 500.84	1 657.53

Residential	Year		Increase/Decrease	
	2025/2026	2026/2027	Amount	%
Low Consumption with PREPAID elect meter				
Electricity Credit Meter	300 kWh	30A		
Basic			413.97	342.56
Capacity Charge			164.40	267.90
		Sub-total	578.37	610.46
Block - 0 - 350 kWh	300		671.91	741.57
SUB-TOTAL			1 250.28	1 352.03
VAT			187.54	202.80
TOTAL			1 437.82	1 554.83

OVERSTRAND MUNICIPALITY: BASKET OF ELECTRICITY TARIFFS 2026/2027

Residential INDIGENT				Year	Year	Increase/Decrease	
Low Consumption with PREPAID elect meter				2025/2026	2026/2027	Amount	%
Electricity	500 kWh	30A					
Basic				413.97	342.56	-71.41	-17.25
Minus: Subsidy				-413.97	-342.56	71.41	-17.25
Capacity Charge				164.40	267.90	103.50	62.96
Minus: Subsidy				-164.40	-267.90	-103.50	62.96
Block - 0 - 350 kWh		350		783.90	865.17	81.27	10.37
Block - 351-500 kWh		150		416.85	414.68	-2.17	-0.52
Minus 70 kWh		-70		-156.78	-173.03	-16.25	10.37
SUB-TOTAL				1 043.97	1 106.81	62.84	6.02
VAT				156.59	166.02	9.43	6.02
TOTAL				1 200.56	1 272.83	72.27	6.02

Residential INDIGENT				Year	Year	Increase/Decrease	
Low Consumption with PREPAID elect meter				2025/2026	2026/2027	Amount	%
Electricity	250 kWh	30A					
Basic				413.97	342.56	-71.41	-17.25
Minus: Subsidy				-413.97	-342.56	71.41	-17.25
Capacity Charge				164.40	267.90	103.50	62.96
Minus: Subsidy				-164.40	-267.90	-103.50	62.96
Block - 0 - 350 kWh		250		559.93	617.98	58.05	10.37
Minus 70 kWh		-70		-156.78	-173.03	-16.25	10.37
SUB-TOTAL				403.15	444.94	41.80	10.37
VAT				60.47	66.74	6.27	10.37
TOTAL				463.62	511.68	48.07	10.37

Residential INDIGENT				Year	Year	Increase/Decrease	
Low Consumption with PREPAID elect meter				2025/2026	2026/2027	Amount	%
Electricity	150 kWh	30A					
Basic				413.97	342.56	-71.41	-17.25
Minus: Subsidy				-413.97	-342.56	71.41	-17.25
Capacity Charge				164.40	267.90	103.50	62.96
Minus: Subsidy				-164.40	-267.90	-103.50	62.96
Block - 0 - 350 kWh		150		335.96	370.79	34.83	10.37
Minus 70 kWh		-70		-156.78	-173.03	-16.25	10.37
SUB-TOTAL				179.18	197.75	18.58	10.37
VAT				26.88	29.66	2.79	10.37
TOTAL				206.05	227.41	21.36	10.37

Life-line Consumption (was one part) Indigent				Year	Year	Increase/Decrease	
Low Consumption with PREPAID elect meter				2025/2026	2026/2027	Amount	%
Electricity	300 kWh	30A					
Supply Basic				108.62	176.84	68.22	62.81
Minus: Subsidy				-108.62	-176.84	-68.22	62.81
Supply Capacity Charge				164.40	267.90	103.50	62.96
Minus: Subsidy				-164.40	-267.90	-103.50	62.96
Block - 0 - 350 kWh		300		671.91	741.57	69.66	10.37
Minus 70 kWh		-70		-156.78	-173.03	-16.25	10.37
SUB-TOTAL				515.13	568.54	53.41	10.37
VAT				77.27	85.28	8.01	10.37
TOTAL				592.40	653.82	61.42	10.37

OVERSTRAND MUNICIPALITY: BASKET OF ELECTRICITY TARIFFS 2026/2027

Business - Large Time of Use		Year	Year	Increase/Decrease	
Time of Use Tariff MV		2025/2026	2026/2027	Amount	%
Basic Charge		4 886.95	4 804.52	-82.43	-1.69
Network Capacity Charge kVA: Notified Maximum Demand (NMD)	450	22 414.50	25 344.00	2 929.50	13.07
Network Demand Charge kVA: Utilised capacity	436	35 220.08	43 787.48	8 567.40	24.33
Hi-Demand: Peak kWh Unit Charge	20428	132 685.99	153 512.33	20 826.35	15.70
Hi-Demand: Standard kWh Unit Charge	40761	87 167.40	103 532.94	16 365.54	18.77
Hi-Demand: Off Peak kWh Unit Charge	47562	60 665.33	73 887.57	13 222.24	21.80
Low Demand: Peak kWh Unit Charge	20428	85 197.02	76 196.44	-9 000.58	-10.56
Low Demand: Standard kWh Unit Charge	40761	76 141.55	85 581.80	9 440.25	12.40
Low Demand: Off Peak kWh Unit Charge	47562	57 026.84	67 970.85	10 944.02	19.19
Reactive Energy charge	150	17.7600	28.8150	11.06	62.25
SUB-TOTAL		561 423.41	634 646.75	73 223.34	13.04
VAT		84 213.51	95 197.01	10 983.50	13.04
TOTAL		645 636.92	729 843.76	84 206.84	13.04

Business - Large Time of Use		Year	Year	Increase/Decrease	
Time of Use Tariff LV		2025/2026	2026/2027	Amount	%
Basic Charge		3 108.74	2 273.78	-834.96	-26.86
Network Capacity Charge kVA: Notified Maximum Demand (NMD)	450	28 224.00	34 803.00	6 579.00	23.31
Network Demand Charge kVA: Utilised capacity	436	48 239.04	64 985.80	16 746.76	34.72
Hi-Demand: Peak kWh Unit Charge	20428	133 881.03	154 652.22	20 771.19	15.51
Hi-Demand: Standard kWh Unit Charge	40761	89 543.76	105 807.40	16 263.64	18.16
Hi-Demand: Off Peak kWh Unit Charge	47562	63 442.95	76 541.53	13 098.57	20.65
Low Demand: Peak kWh Unit Charge	20428	86 390.01	77 336.32	-9 053.69	-10.48
Low Demand: Standard kWh Unit Charge	40761	78 513.84	87 852.18	9 338.35	11.89
Low Demand: Off Peak kWh Unit Charge	47562	59 809.22	70 624.81	10 815.60	18.08
Reactive Energy charge	150	17.70	28.82	11.12	62.80
SUB-TOTAL		591 170.29	674 905.86	83 735.57	14.16
VAT		88 675.54	101 235.88	12 560.34	14.16
TOTAL		679 845.83	776 141.74	96 295.91	14.16

Business - Large Time of Use		Year	Year	Increase/Decrease	
Time of Use Tariff Small Customer <100kVA		2025/2026	2026/2027	Amount	%
Basic Charge		468.09	507.88	39.79	8.50
Network Capacity Charge kVA: Notified Maximum Demand (NMD)	115	21 714.30	0.00	0.00	0.00
Network Demand Charge kVA: Utilised capacity	80	0.00	5 035.20	-16 679.10	-76.81
Hi-Demand: Peak kWh Unit Charge	20428	53 174.08	57 692.76	4 518.67	8.50
Hi-Demand: Standard kWh Unit Charge	40761	67 165.98	72 876.59	5 710.62	8.50
Hi-Demand: Off Peak kWh Unit Charge	47562	131 437.59	142 609.90	11 172.31	8.50
Low Demand: Peak kWh Unit Charge	20428	42 116.41	45 695.39	3 578.99	8.50
Low Demand: Standard kWh Unit Charge	40761	60 933.62	66 114.34	5 180.72	8.50
Low Demand: Off Peak kWh Unit Charge	47562	11 229.39	12 180.63	951.24	8.47
Reactive Energy charge	150	35.42	38.42	3.00	8.47
SUB-TOTAL		388 274.87	402 751.11	14 476.24	3.73
VAT		58 241.23	60 412.67	2 171.44	3.73
TOTAL		446 516.10	463 163.78	16 647.68	3.73

OVERSTRAND MUNICIPALITY: BASKET OF ELECTRICITY TARIFFS 2026/2027

Business - Large (Three Phase)			Year		Increase/Decrease	
			2025/2026	2026/2027	Amount	%
Electricity Credit Meter	7000 kWh	100A				
Basic			742.44	545.92	-196.52	-26.47
Capacity Charge			2 523.00	4 188.00	1 665.00	65.99
Flat rate		7000	20 278.30	19 308.10	-970.20	-4.78
SUB-TOTAL			23 543.74	24 042.02	498.28	2.12
VAT			3 531.56	3 606.30	74.74	2.12
TOTAL			27 075.30	27 648.32	573.02	2.12

Business - Large (Three Phase)			Year		Increase/Decrease	
			2025/2026	2026/2027	Amount	%
Electricity Credit Meter	7000 kWh	80A				
Basic			742.44	545.92	-196.52	-26.47
Capacity Charge			2 018.40	3 350.40	1 332.00	65.99
Flat rate		7000	20 278.30	19 308.10	-970.20	-4.78
SUB-TOTAL			23 039.14	23 204.42	165.28	0.72
VAT			3 455.87	3 480.66	24.79	0.72
TOTAL			26 495.01	26 685.08	190.07	0.72

Business - Large (Three Phase)			Year		Increase/Decrease	
			2025/2026	2026/2027	Amount	%
Electricity Credit Meter	7000 kWh	60A				
Basic			742.44	545.92	-196.52	-26.47
Capacity Charge			1 513.80	2 512.80	999.00	65.99
Flat rate		7000	20 278.30	19 308.10	-970.20	-4.78
SUB-TOTAL			22 534.54	22 366.82	-167.72	-0.74
VAT			3 380.18	3 355.02	-25.16	-0.74
TOTAL			25 914.72	25 721.84	-192.88	-0.74

Business - Large (Three Phase)			Year		Increase/Decrease	
			2025/2026	2026/2027	Amount	%
Electricity Credit Meter	7000 kWh	40A				
Basic			742.44	545.92	-196.52	-26.47
Capacity Charge			1 009.20	1 675.20	666.00	65.99
Flat rate		7000	20 278.30	19 308.10	-970.20	-4.78
SUB-TOTAL			22 029.94	21 529.22	-500.72	-2.27
VAT			3 304.49	3 229.38	-75.11	-2.27
TOTAL			25 334.43	24 758.60	-575.83	-2.27

Business - Large (Three Phase)			Year		Increase/Decrease	
			2025/2026	2026/2027	Amount	%
Electricity Prepaid Meter	7000 kWh	100A				
Basic			742.44	545.92	-196.52	-26.47
Capacity Charge			2 523.00	4 107.00	1 584.00	62.78
Flat rate		7000	19 570.60	19 308.10	-262.50	-1.34
SUB-TOTAL			22 836.04	23 961.02	1 124.98	4.93
VAT			3 425.41	3 594.15	168.75	4.93
TOTAL			26 261.45	27 555.17	1 293.73	4.93

Business - Large (Three Phase)			Year		Increase/Decrease	
			2025/2026	2026/2027	Amount	%
Electricity Prepaid Meter	7000 kWh	80A				
Basic			742.44	545.92	-196.52	-26.47
Capacity Charge			2 018.40	3 285.60	1 267.20	62.78
Flat rate		7000	19 570.60	19 308.10	-262.50	-1.34
SUB-TOTAL			22 331.44	23 139.62	808.18	3.62
VAT			3 349.72	3 470.94	121.23	3.62
TOTAL			25 681.16	26 610.56	929.41	3.62

Business - Large (Three Phase)			Year		Increase/Decrease	
			2025/2026	2026/2027	Amount	%
Electricity Prepaid Meter	7000 kWh	60A				
Basic			742.44	545.92	-196.52	-26.47
Capacity Charge			1 513.80	2 464.20	950.40	62.78
Flat rate		7000	19 570.60	19 308.10	-262.50	-1.34
SUB-TOTAL			21 826.84	22 318.22	491.38	2.25
VAT			3 274.03	3 347.73	73.71	2.25
TOTAL			25 100.87	25 665.95	565.09	2.25

Business - Large (Three Phase)			Year		Increase/Decrease	
			2025/2026	2026/2027	Amount	%
Electricity Prepaid Meter	7000 kWh	40A				
Basic			742.44	545.92	-196.52	-26.47
Capacity Charge			1 009.20	1 642.80	633.60	62.78
Flat rate		7000	19 570.60	19 308.10	-262.50	-1.34
SUB-TOTAL			21 322.24	21 496.82	174.58	0.82
VAT			3 198.34	3 224.52	26.19	0.82
TOTAL			24 520.58	24 721.34	200.77	0.82

OVERSTRAND MUNICIPALITY: BASKET OF ELECTRICITY TARIFFS 2026/2027

Business - Medium (Three Phase)			Year		Year		Increase/Decrease	
			2025/2026	2026/2027	Amount	%		
Electricity Credit Meter	4000 kWh	100A						
Basic			742.44	545.92	-196.52	-26.47		
Capacity Charge			2 523.00	4 188.00	1 665.00	65.99		
Flat rate		4000	11 587.60	11 033.20	-554.40	-4.78		
SUB-TOTAL			14 853.04	15 767.12	914.08	6.15		
VAT			2 227.96	2 365.07	137.11	6.15		
TOTAL			17 081.00	18 132.19	1 051.19	6.15		

Business - Medium (Three Phase)			Year		Year		Increase/Decrease	
			2025/2026	2026/2027	Amount	%		
Electricity Credit Meter	4000 kWh	80A						
Basic			742.44	545.92	-196.52	-26.47		
Capacity Charge			2 018.40	3 350.40	1 332.00	65.99		
Flat rate		4000	11 587.60	11 033.20	-554.40	-4.78		
SUB-TOTAL			14 348.44	14 929.52	581.08	4.05		
VAT			2 152.27	2 239.43	87.16	4.05		
TOTAL			16 500.71	17 168.95	668.24	4.05		

Business - Medium (Three Phase)			Year		Year		Increase/Decrease	
			2025/2026	2026/2027	Amount	%		
Electricity Credit Meter	4000 kWh	60A						
Basic			742.44	545.92	-196.52	-26.47		
Capacity Charge			1 513.80	2 512.80	999.00	65.99		
Flat rate		4000	11 587.60	11 033.20	-554.40	-4.78		
SUB-TOTAL			13 843.84	14 091.92	248.08	1.79		
VAT			2 076.58	2 113.79	37.21	1.79		
TOTAL			15 920.42	16 205.71	285.29	1.79		

Business - Medium (Three Phase)			Year		Year		Increase/Decrease	
			2025/2026	2026/2027	Amount	%		
Electricity Credit Meter	4000 kWh	40A						
Basic			742.44	545.92	-196.52	-26.47		
Capacity Charge			1 009.20	1 675.20	666.00	65.99		
Flat rate		4000	11 587.60	11 033.20	-554.40	-4.78		
SUB-TOTAL			13 339.24	13 254.32	-84.92	-0.64		
VAT			2 000.89	1 988.15	-12.74	-0.64		
TOTAL			15 340.13	15 242.47	-97.66	-0.64		

Business - Medium (Three Phase)			Year		Year		Increase/Decrease	
			2025/2026	2026/2027	Amount	%		
Electricity Prepaid Meter	4000 kWh	100A						
Basic			742.44	545.92	-196.52	-26.47		
Capacity Charge			2 523.00	4 107.00	1 584.00	62.78		
Flat rate		4000	11 183.20	11 033.20	-150.00	-1.34		
SUB-TOTAL			14 448.64	15 686.12	1 237.48	8.56		
VAT			2 167.30	2 352.92	185.62	8.56		
TOTAL			16 615.94	18 039.04	1 423.10	8.56		

Business - Medium (Three Phase)			Year		Year		Increase/Decrease	
			2025/2026	2026/2027	Amount	%		
Electricity Prepaid Meter	4000 kWh	80A						
Basic			742.44	545.92	-196.52	-26.47		
Capacity Charge			2 018.40	3 285.60	1 267.20	62.78		
Flat rate		4000	11 183.20	11 033.20	-150.00	-1.34		
SUB-TOTAL			13 944.04	14 864.72	920.68	6.60		
VAT			2 091.61	2 229.71	138.10	6.60		
TOTAL			16 035.65	17 094.43	1 058.78	6.60		

Business - Medium (Three Phase)			Year		Year		Increase/Decrease	
			2025/2026	2026/2027	Amount	%		
Electricity Prepaid Meter	4000 kWh	60A						
Basic			742.44	545.92	-196.52	-26.47		
Capacity Charge			1 513.80	2 464.20	950.40	62.78		
Flat rate		4000	11 183.20	11 033.20	-150.00	-1.34		
SUB-TOTAL			13 439.44	14 043.32	603.88	4.49		
VAT			2 015.92	2 106.50	90.58	4.49		
TOTAL			15 455.36	16 149.82	694.46	4.49		

Business - Medium (Three Phase)			Year		Year		Increase/Decrease	
			2025/2026	2026/2027	Amount	%		
Electricity Prepaid Meter	4000 kWh	40A						
Basic			742.44	545.92	-196.52	-26.47		
Capacity Charge			1 009.20	1 642.80	633.60	62.78		
Flat rate		4000	11 183.20	11 033.20	-150.00	-1.34		
SUB-TOTAL			12 934.84	13 221.92	287.08	2.22		
VAT			1 940.23	1 983.29	43.06	2.22		
TOTAL			14 875.07	15 205.21	330.14	2.22		

OVERSTRAND MUNICIPALITY: BASKET OF ELECTRICITY TARIFFS 2026/2027

Business - Small (Three Phase)			Year		Increase/Decrease	
			2025/2026	2026/2027	Amount	%
Electricity Credit Meter	1000 kWh	100A				
Basic			742.44	545.92	-196.52	-26.47
Capacity Charge			2 523.00	4 188.00	1 665.00	65.99
Flat rate		1000	2 896.90	2 758.30	-138.60	-4.78
SUB-TOTAL			6 162.34	7 492.22	1 329.88	21.58
VAT			924.35	1 123.83	199.48	21.58
TOTAL			7 086.69	8 616.05	1 529.36	21.58

Business - Small (Three Phase)			Year		Increase/Decrease	
			2025/2026	2026/2027	Amount	%
Electricity Credit Meter	1000 kWh	80A				
Basic			742.44	545.92	-196.52	-26.47
Capacity Charge			2 018.40	3 350.40	1 332.00	65.99
Flat rate		1000	2 896.90	2 758.30	-138.60	-4.78
SUB-TOTAL			5 657.74	6 654.62	996.88	17.62
VAT			848.66	998.19	149.53	17.62
TOTAL			6 506.40	7 652.81	1 146.41	17.62

Business - Small (Three Phase)			Year		Increase/Decrease	
			2025/2026	2026/2027	Amount	%
Electricity Credit Meter	1000 kWh	60A				
Basic			742.44	545.92	-196.52	-26.47
Capacity Charge			1 513.80	2 512.80	999.00	65.99
Flat rate		1000	2 896.90	2 758.30	-138.60	-4.78
SUB-TOTAL			5 153.14	5 817.02	663.88	12.88
VAT			772.97	872.55	99.58	12.88
TOTAL			5 926.11	6 689.57	763.46	12.88

Business - Small (Three Phase)			Year		Increase/Decrease	
			2025/2026	2026/2027	Amount	%
Electricity Credit Meter	1000 kWh	40A				
Basic			742.44	545.92	-196.52	-26.47
Capacity Charge			1 009.20	1 675.20	666.00	65.99
Flat rate		1000	2 896.90	2 758.30	-138.60	-4.78
SUB-TOTAL			4 648.54	4 979.42	330.88	7.12
VAT			697.28	746.91	49.63	7.12
TOTAL			5 345.82	5 726.33	380.51	7.12

Business - Small (Three Phase)			Year		Increase/Decrease	
			2025/2026	2026/2027	Amount	%
Electricity Prepaid Meter	1000 kWh	100A				
Basic			742.44	545.92	-196.52	-26.47
Capacity Charge			2 523.00	4 107.00	1 584.00	62.78
Flat rate		1000	2 795.80	2 758.30	-37.50	-1.34
SUB-TOTAL			6 061.24	7 411.22	1 349.98	22.27
VAT			909.19	1 111.68	202.50	22.27
TOTAL			6 970.43	8 522.90	1 552.48	22.27

Business - Small (Three Phase)			Year		Increase/Decrease	
			2025/2026	2026/2027	Amount	%
Electricity Prepaid Meter	1000 kWh	80A				
Basic			742.44	545.92	-196.52	-26.47
Capacity Charge			2 018.40	3 285.60	1 267.20	62.78
Flat rate		1000	2 795.80	2 758.30	-37.50	-1.34
SUB-TOTAL			5 556.64	6 589.82	1 033.18	18.59
VAT			833.50	988.47	154.98	18.59
TOTAL			6 390.14	7 578.29	1 188.16	18.59

Business - Small (Three Phase)			Year		Increase/Decrease	
			2025/2026	2026/2027	Amount	%
Electricity Prepaid Meter	1000 kWh	60A				
Basic			742.44	545.92	-196.52	-26.47
Capacity Charge			1 513.80	2 464.20	950.40	62.78
Flat rate		1000	2 795.80	2 758.30	-37.50	-1.34
SUB-TOTAL			5 052.04	5 768.42	716.38	14.18
VAT			757.81	865.26	107.46	14.18
TOTAL			5 809.85	6 633.68	823.84	14.18

Business - Small (Three Phase)			Year		Increase/Decrease	
			2025/2026	2026/2027	Amount	%
Electricity Prepaid Meter	1000 kWh	40A				
Basic			742.44	545.92	-196.52	-26.47
Capacity Charge			1 009.20	1 642.80	633.60	62.78
Flat rate		1000	2 795.80	2 758.30	-37.50	-1.34
SUB-TOTAL			4 547.44	4 947.02	399.58	8.79
VAT			682.12	742.05	59.94	8.79
TOTAL			5 229.56	5 689.07	459.52	8.79