

OVERSTRAND MUNICIPALITY



INTEGRATED WASTE MANAGEMENT PLAN: *Annual Report (1 July 2022 – 30 June 2023)*

COMPILED BY:

JPCE

(Specialist Consulting Engineers)

NOVEMBER 2023

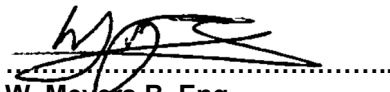
REPORT: INTEGRATED WASTE MANAGEMENT PLAN: Annual Report (1 July 2022 – 30 June 2023)

JPCE Project Number: A128

COMPILED FOR:


Overstrand Municipality
P O Box 20
HERMANUS
7200

COMPILED BY:



W. Meyers B. Eng.
Engineer
e-mail: william@jpce.co.za

REVIEWED BY:



JG Palm Pr. Eng.
Director
e-mail: janpalm@jpce.co.za

JPCE (PTY) LTD

P O Box 931
Brackenfell
7561

e-mail: info@jpce.co.za
Tel: +27 (0) 21 982 6570
Fax: +27 (0) 21 981 0868

COPIES ISSUED TO:

DEPARTMENT/COMPANY	ATTENTION (Name)	COPY NO.	DATE ISSUED	AUTHORISED BY
OVERSTRAND MUNICIPALITY P O BOX 20 HERMANUS 7200	Mr C Mitchell	1	11/2023	JG PALM
JPCE (PTY) LTD P O Box 931 BRACKENFELL 7561	Project File	2	11/2023	JG PALM

COPYRIGHT

Copyright of the above said report vests in the **JPCE (Pty) Ltd** unless otherwise agreed to in writing. The said report or parts thereof may not be reproduced or transmitted in any form or by any means mechanically or electronically whatsoever without the written permission of the copyright holder.

OVERSTRAND MUNICIPALITY

INTEGRATED WASTE MANAGEMENT PLAN: ANNUAL REPORT

CONTENTS

	Page
1. INTRODUCTION.....	1
1.1 BACKGROUND.....	1
2. OVERSTRAND IWMP	1
2.1 GOALS AND IMPLEMENTATION ITEMS SUMMARY	1
3. 1 JULY 2022 TO 30 JUNE 2023 EVALUATION.....	2
3.1 GOALS AND IMPLEMENTATION FOR ASSESSMENT PERIOD	3
4. ADDITIONAL PROJECT INFORMATION	7
4.1 AWARENESS AND EDUCATION.....	7
4.2 WASTE INFORMATION MANAGEMENT & ENSURE WASTE MINIMISATION	8
4.3 EFFECTIVE SOLID WASTE SERVICE DELIVERY & SAFE MANAGEMENT OF HAZARDOUS WASTE	9
4.4 IMPROVE REGULATORY COMPLIANCE	9
4.5 BUDGETING	10
4.6 SOLID WASTE EXPENDITURE DURING EVALUATION PERIOD	11
4.7 IWMP REVIEW AND UPDATE	11
5. CONCLUSIONS AND RECOMMENDATIONS.....	11

ANNEXURES

ANNEXURE 1: AWARENESS AND EDUCATION EXAMPLES

OVERSTRAND MUNICIPALITY

INTEGRATED WASTE MANAGEMENT PLAN: ANNUAL REPORT

1. INTRODUCTION

1.1 BACKGROUND

This report is a requirement as part of the Integrated Waste Management Plan (IWMP) monitoring and review process as well as being a requirement of the Waste Act to be submitted. The purpose is to determine whether the action plans and implementation items contained in the IWMP are being implemented and if not, what the planning is regarding these. Evaluating the above will provide insight into the extent to which the IWMP has been implemented during the evaluation period, the levels of compliance and if the IWMP is still useful in terms of its goals or if it should be updated.

The evaluation period for this report is from 1 July 2022 to 30 June 2023. The Overstrand IWMP dated May 2020 was used for the evaluation.

2. OVERSTRAND IWMP

2.1 GOALS AND IMPLEMENTATION ITEMS SUMMARY

The following goals and implementation items were included in the 2020 IWMP:

Goal 1:	Strengthened education, capacity and advocacy towards Integrated Waste Management
Strategic Objective 1:	Facilitate consumer and industry responsibility in integrated waste management
Strategic Objective 2:	Promote and ensure awareness and education of integrated waste management
Strategic Objective 3:	Build and strengthen waste management capacity
Goal 2:	Improved integrated waste management planning and implementation for efficient waste services and infrastructure
Strategic Objective 1:	Facilitate municipal waste management planning
Strategic Objective 2:	Promote industry waste management planning
Strategic Objective 3:	Promote the establishment of integrated waste management infrastructure and services
Strategic Objective 4:	Ensure effective and efficient waste information management
Goal 3:	Effective and efficient utilisation of resources
Strategic Objective 1:	Minimise the consumption of natural resources
Strategic Objective 2:	Stimulate job creation within the waste economy
Strategic Objective 3:	Increase waste diversion through reuse, recovery and recycling
Goal 4:	Improved compliance with environmental regulatory framework
Strategic Objective 1:	Strengthen compliance monitoring and enforcement
Strategic Objective 2:	Remediate and rehabilitate contaminated land
Strategic Objective 3:	Facilitate the development of waste policy instruments
Strategic Objective 4:	Promote self/co-regulatory measures

3. 1 JULY 2022 TO 30 JUNE 2023 EVALUATION

As per the Waste Act, this report must evaluate the implementation of the IWMP in terms of the following:

- a) the extent to which the plan has been implemented during the period;
- b) the waste management initiatives that have been undertaken during the reporting period;
- c) the delivery of waste management services and measures taken to secure the efficient delivery of waste management services, if applicable;
- d) the level of compliance with the plan and any applicable waste management standards;
- e) the measures taken to secure compliance with waste management standards;
- f) the waste management monitoring activities;
- g) the actual budget expended on implementing the plan;
- h) the measures that have been taken to make any necessary amendments to the plan;
- i) in the case of a province, the extent to which municipalities comply with the plan and, in the event of any non-compliance with the plan, the reasons for such non-compliance: and
- j) any other requirements as may be prescribed by the Minister.

To reflect the required information, the extent to which action items and goals listed above were implemented are described below:

3.1 GOALS AND IMPLEMENTATION FOR ASSESSMENT PERIOD

Goals and implementation items (2020 IWMP)			2022/2023	Future planning / Comments
Goal 1: Strengthened education, capacity and advocacy towards Integrated Waste Management			Implemented? (1 = yes, 0.5 = partially, 0 = no)	
Strategic Objective 1:	Facilitate consumer and industry responsibility in integrated waste management	The Manager: Solid Waste Planning must address and co-ordinate the requirements of awareness and general waste management either by himself or an appointed person. This person will co-ordinate and/or delegate the follow-up visits to the special and hazardous waste generators in the Overstrand municipality to ensure that all these generators are aware of applicable legislation and are following steps to become compliant if required. This person will also oversee the information gathering as per legislation, in other words, ensure that generators and transporters report to the municipality as required. General public awareness and feedback on recycling issues and information will also fall under the duties of this person, including maintaining and improving upon the diversion statistics information provided to the public. Continue to support the educational Puppet Show & Theatre.	0.5	Refer to additional information for public awareness. Further implementation to continue. Engagement with special and hazardous waste generators delayed.
Strategic Objective 2:	Promote and ensure awareness and education of integrated waste management			
Strategic Objective 3:	Build and strengthen waste management capacity	Fill all vacant posts as soon as possible. Municipal solid waste employees to attend education seminars and waste forums as is appropriate for their specific responsibility levels. Capacity training and education must be conducted within the municipality where needed. It must be ensured that the solid waste management employees are informed regarding the latest legislation and how to appropriately handle and identify various waste types. Law enforcement departments must also be approached and receive education in solid waste legislation and management to enable them to identify issues and act when required.	1	Mr Mitchell attends forums and seminars. The Provincial and District waste forums are attended regularly.

Goals and implementation items (2020 IWMP)			2022/2023	Future planning / Comments
		<p>The South African Institute of Waste Management (www.iwmsa.co.za) is a voluntary organization that provides training on the management of waste. The Overstrand Municipality is encouraged to have their staff become members of this institute and to attend the training sessions that is available on their website.</p> <p>The Waste Management Officer attends the Western Cape DEADP Provincial Waste Forum, The Western Cape Recycling Action Group as well as the Overberg District Waste Forum.</p>		
Goal 2: Improved integrated waste management planning and implementation for efficient waste services and infrastructure				
Strategic Objective 1:	Facilitate municipal waste management planning	Review IWMP and submit IWMP annual report along with implementation projects update.	1	Completed annually
Strategic Objective 2:	Promote industry waste management planning	This objective is coupled with Goal 1, where the appointed persons will liaise with industry to ensure that they are aware of the relevant legislation. Follow-up meetings and on-going communication will ensure that industry sufficiently plans and implements actions in order to be compliant and reduce waste generation along with responsible handling/treatment/transport/disposal.	N/A	Implementation for upcoming years.
Strategic Objective 3:	Promote the establishment of integrated waste management infrastructure and services	To be determined in light of diversion studies and annual IWMP implementation reviews. Possible Trommel at Gansbaai Landfill to increase organic waste diversion.	1	Focus was placed on completion of the MRF due to delays in construction. Gansbaai Trommel placed on CAPEX plan split over 2025/2026 and 2026/2027 financial years. The Stanford Drop-off was upgraded during the year where the portion of wooden retaining poles at the container bays were replaced with a concrete retaining wall and the perimeter fence and gate were upgraded to a clear view type fence.

Goals and implementation items (2020 IWMP)			2022/2023	Future planning / Comments
Strategic Objective 4:	Ensure effective and efficient waste information management	Improve the detail with which the waste characterisation study is done. The study should include sub-categories for the current included waste types in order for refined planning and diversion option identification. Continue recording at weighbridges and reporting to IPWIS by the Waste Management Officer.	1	Initial results included in the 2020 IWMP. The study continues to collect new data. IPWIS data is submitted monthly.
Goal 3: Effective and efficient utilisation of resources				
Strategic Objective 1:	Minimise the consumption of natural resources	This also ties in with Goal 1 to promote waste minimisation and recycling, which will in turn reduce pressure on natural resources by re-using materials efficiently. New facility designs must take cognisance of natural resource protection. For example, a rehabilitated disposal site must be covered with indigenous vegetation suited to the climate so as not to require additional watering to thrive. Awareness and education should place additional focus on waste avoidance, reducing the need for diversion methods and disposal.	1	The new Hermanus MRF was constructed and is under operation to boost recycling. The Hawston landfill remove & remediate operation is completed and a surrender application was submitted in June 2023. Education is largely focussed on diversion information.
Strategic Objective 2:	Stimulate job creation within the waste economy	Assess job creation opportunities, both permanent and temporary in the waste management field and upcoming projects. Job creation remains a top need in the community.	1	Job creation implemented by means of EPWP workers employed to do area cleaning. Story Team also employ local actors and interns for use in their waste awareness productions.
Strategic Objective 3:	Increase waste diversion through reuse, recovery and recycling	Investigate alternatives in order to improve organic waste diversion rates in order to achieve 50% organic waste diversion by 2022.	0.5	The OWDP is being implemented and an average organic waste diversion rate from July 2022 to June 2023 of 34.74% was achieved. During four separate months organic diversion of above 50% was achieved. The Overstrand is evidently committed to achieve targets and just need to achieve it consistently.

Goals and implementation items (2020 IWMP)			2022/2023	Future planning / Comments
Goal 4: Improved compliance with environmental regulatory framework				
Strategic Objective 1:	Strengthen compliance monitoring and enforcement	Conduct internal and external compliance audits at all waste management facilities as required according to licences and legislation. Findings must be communicated to the DEADP.	1	All operational facilities as well as closed facilities received the required external audits as well as internal audits. These audit reports were submitted to the DEADP within the required timeframes. This item's implementation continues annually.
Strategic Objective 2:	Remediate and rehabilitate contaminated land	Remove and remediate the Fisherhaven Landfill.	0	This item has been moved to later implementation years. This is due to the additional processes that were required by the Department in finalising the Hawston and Pearly Beach landfills remediation and licence surrendering. These processes require completion before work at Fisherhaven can commence.
Strategic Objective 3:	Facilitate the development of waste policy instruments	Scheduled item completed in previous years.	N/A	Scheduled item completed in previous years.
Strategic Objective 4:	Promote self/co-regulatory measures	Ties in with Goal 1. Person responsible to liaise with industry should promote the implementation of these measure e.g. through reviewing industry waste management plans. Ensure annual IWMP review and reporting.	1	Refer to Goal 1. IWMP annual report submitted annually.
IWMP implementation % (2022-2023)			82%	

4. ADDITIONAL PROJECT INFORMATION

4.1 AWARENESS AND EDUCATION

The Overstrand Municipality conducts comprehensive awareness and education campaigns with continual involvement with the public in terms of solid waste management and the promotion of better waste management practices. Residents are informed and given feedback through the means of newsletters, pamphlets, social media and the municipal website. Schools are visited to educate learners about solid waste and recycling.

The following summarised examples indicate the latest actions. Further details are attached as **Annexure 1**, which is a small sample of the numerous public education and engagements. More examples are available at the waste manager's office.

- Storyteam Storifactori: This is a team conducting an educational theatre project in collaboration with the Overstrand Municipality. They visit schools and community centres throughout Overstrand and perform environmentally themed puppet theatre productions with an interactive nature to teach learners about the importance of nature conservation and proper waste management and recycling. Their target audience is from grade R to grade 7. Productions are presented in Afrikaans, English and isiXhosa.
- Newspapers: For example, "Village News", "Overstrand Bulletin" and "Gans-berg News". Solid Waste project articles and advertisements for public participation. Useful waste management and recycling information.
- Press releases, website and pamphlets: Waste transportation information and available solid waste facility information. Solid waste projects progress reports. Recycling information.
- Information pamphlets: Discouraging illegal dumping and information regarding collection days for weekends. Information on managing waste in baboon-active areas.
- Municipal newsletter ("BULLETIN"): Solid waste events and information.
- Social Media: Announcements, public interaction, useful information.

The Overstrand should continue with their awareness and education campaign which contributes to the Municipality's successful waste management practices and public support and involvement. This is also included as an ongoing action item in the IWMP's implementation.

4.2 WASTE INFORMATION MANAGEMENT & ENSURE WASTE MINIMISATION

Goals 2 and 4 are addressed in this section, as the waste information management system quantifies the extent of waste minimisation achieved by the Overstrand Municipality during the evaluation period. The ongoing implementation of this goal is under way and accurate data has been used to determine the portions of waste diverted from landfill. The monthly data is also reported to the Integrated Pollutant and Waste Information System (IPWIS) by the Municipality. This information is summarised as follows:

Month	Waste Diverted						Waste Disposed		
	Builder's Rubble used as Cover at Gansbaai (tonnes)	Builder's Rubble used as Cover at Karwyderskraal (tonnes)	Chips used as Cover at Gansbaai (tonnes)	Organic waste Composted at Karwyderskraal (tonnes)	Recycled at Gansbaai (tonnes)	Recycled at Hermanus (tonnes)	Total % diverted	Disposed at Gansbaai Landfill (tonnes)	Disposed at Karwyderskraal (tonnes)
Jul-22	1702.72	1236.22	64.58	1387.98	16.24	52.16	59%	588.18	2451.35
Aug-22	1219.36	1659.72	205.92	1209.27	50.40	115.97	52%	628.36	3469.52
Sep-22	1353.72	1655.84	0.00	1523.00	0.80	35.93	55%	680.87	3061.38
Oct-22	1538.78	1711.82	246.44	1179.34	0.72	89.13	55%	685.80	3280.68
Nov-22	1274.11	1601.96	249.96	1364.26	29.66	120.93	54%	1026.10	2973.48
Dec-22	858.58	752.34	127.40	1166.48	65.86	21.73	38%	1316.60	3658.54
Jan-23	1375.31	801.30	38.92	1093.16	23.66	156.26	43%	1136.73	3452.10
Feb-23	849.92	1106.98	257.26	1326.28	42.84	69.88	50%	725.98	2940.62
Mar-23	1544.98	1640.80	50.40	1709.62	13.38	177.19	53%	785.80	3703.31
Apr-23	1588.17	995.78	359.70	1536.88	20.56	99.97	55%	646.70	3147.08
May-23	1326.88	1387.76	0.00	1163.60	50.66	78.93	51%	726.52	3200.10
Jun-23	1277.74	939.26	117.64	1253.06	0.18	77.68	53%	682.40	2588.58
Year Total	15 910.27	15 489.79	1 718.22	15 912.93	314.96	1095.76	51%	9 630.05	37 926.74
Average Monthly	1 325.86	1 290.82	143.19	1 326.08	26.25	91.31		802.50	3160.56
Average Daily (6day)	50.99	49.65	5.51	51.00	1.01	3.51		30.87	121.56

From the table above, it can be seen that on average, 51% of the Overstrand's solid waste stream has been diverted during the evaluation period. This is an increase of 5% over the previous evaluation.

4.3 **EFFECTIVE SOLID WASTE SERVICE DELIVERY & SAFE MANAGEMENT OF HAZARDOUS WASTE**

The Overstrand delivers weekly solid waste collection services to all residences in the municipal area. These services are also rendered free of charge to all registered indigent households. There are on average approximately 7400 registered indigent households which receive free basic services. This figure has dropped to 1491 as many households did not reapply. The Overstrand is currently conducting a drive to assist households with reapplications to receive the benefit again.

Waste is collected in informal settlements in the form of communal collection points (bins and skips). In addition to collection services at households, there are numerous public drop-off facilities where the public can offload their waste for collection and disposal. These facilities are either larger drop-off facilities which accommodate vehicles and large loads or “weekend” drop-offs which are smaller and convenient for weekend visitors who cannot put out their waste on collection days to deposit their waste before leaving the Overstrand. These facilities are the following:

- Hermanus Transfer Station
- Hermanus MRF & Public Drop-off
- Kleinmond Transfer Station & Public Drop-off
- Pringle Bay Mini Drop-off
- Betty’s Bay Garden Waste Drop-off
- Betty’s Bay Mini drop-off
- Gansbaai Landfill Public Drop-off
- Hawston Drop-off
- Voëlklip Mini Drop-off
- Voëlklip Drop-off
- Stanford Drop-off
- Pearly Beach Drop-off

Waste is collected from households in either wheelie bins or refuse bags. A 2-bag system is implemented in order for residents to practice source separation.

Household hazardous waste containers are available at the Gansbaai Landfill and Kleinmond Transfer Station for the temporary storage of these waste types. When the containers reach capacity, the waste is collected and transported to a treatment or disposal facility for disposal. Storage capacity at each facility for household hazardous waste is kept below 80m³. Gansbaai Landfill, Kleinmond Transfer Station and the Voëlklip Drop-off each have a hooklift bin for the collection and temporary storage of asbestos roof sheeting, gutters and down pipes, once the containers are full, they are transported to the Vissershok Hazardous Waste Landfill in Cape Town for disposal.

The rendered services as well as the availability of the above facilities prove adequate for effective solid waste service delivery.

All complaints received regarding solid waste are logged on the internal system. A work order is created when a complaint is received and sent to the appropriate responsible person. This person must then address the complaint and report back in order to complete the order.

Complaints can be logged at the following numbers for each area:

Hermanus:	(028) 313 8000
Gansbaai:	(028) 384 8300
Kleinmond:	(028) 271 8400
Stanford:	(028) 341 8500

4.4 **IMPROVE REGULATORY COMPLIANCE**

All solid waste management facilities that require licensing have been licensed in the Overstrand. Due to the requirements stipulated in the licences, regular audits are required of the facilities, even if they are no longer operational.

External audits are conducted by an independent service provider as required. These reports are submitted to the Overstrand Municipality, the Overberg District Municipality and the D:EADP. The municipality conducts quarterly internal audits on the operational and closed facilities.

The following solid waste facilities were audited during 2022 & 2023 in terms of their respective licence/permit conditions. Note that some facilities only require audits every second year and some do not require audits any longer.

- Gansbaai Operational Landfill
- Hawston Closed Landfill (Waste body removed and area remediated)
- Hermanus RTS
- Hermanus Material Recovery Facility
- Hermanus Closed Landfill
- Kleinmond RTS
- Pearly Beach Closed Landfill
- Stanford Closed Landfill
- Voëlklip Closed Landfill

The audits are used by the municipality to identify the non-compliances and addressing the identified issues. Not all issues can or need to be immediately addressed but are scheduled according to the available budget and/or according to stipulated dates in the licences. The audit reports can be obtained from the municipality on request.

The Municipality has therefore fully implemented the action under this goal in order to evaluate their solid waste management facilities and improve compliance.

4.5 **BUDGETING**

The municipality appoints an external service provider annually in order to evaluate the waste disposal facilities and calculate cost estimates in order to rehabilitate each facility. This is done in accordance with the relevant accounting standards (GRAP19). The evaluation date of this annual report is at the municipal financial year-end, 30 June.

These costs need to be recalculated annually to provide the best estimate due to changes in legislation, rehabilitation requirements, expected year of rehabilitation and changing site conditions. A summary of the latest cost estimate (30 June 2023) for each site that would require future rehabilitation is provided below:

Site Name:	Onrus Landfill	Hermanus Landfill	Hawston Landfill	Fisherhaven Landfill
Total (Excl. VAT)	R19,628,563.16	R18,945,266.64	R5,792,201.33	R15,772,304.82
Site Name:	Voëlklip Landfill	Stanford Landfill	Pearly Beach Landfill	Gansbaai Landfill
Total (Excl. VAT)	R27,040,372.63	R5,777,849.49	R7,543,665.83	R53,488,092.94

These cost estimates are not all required in the assessment period, but are scheduled for upcoming financial years.

Adequate budget is available for the solid waste operational services, but currently limited funds are available for capital projects. The removal and remediation of the Hawston Landfill has been completed. The waste was transported to the Karwyderskraal Landfill for disposal. The process is almost completed with the Department. The final report was submitted on the 30th of June 2023 and awaiting feedback from the Department. Establishment of a new Drop-off and material recovery facility for Hermanus is completed and currently operational.

The Municipality needs to explore sources of funding in order to implement capital projects.

4.6 SOLID WASTE EXPENDITURE DURING EVALUATION PERIOD

OPERATING REVENUE	R
Service Charges	85 923 288
Transfers & subsidies	14 861 414
Fines, Penalties & Forfeits	11 707
Other Revenue	151 013
Total Operating Revenue	100 947 422
OPERATING EXPENDITURE	
Employee Related Costs	35 685 457
Debt Impairment	1 448 326
Depreciation and Asset Impairment	3 804 285
Finance charges	117 821
Inventory consumed	4 927 426
Contracted Services	36 022 373
Bad debts written off	640 780
Operational costs	14 214 232
Total Direct Operating Expenditure	96 860 700
COSTING	
Departmental Charges/Recharges	5 466 811
SURPLUS/DEFICIT	
Operating Surplus: Total revenue less Total Expenditure	-1 380 089

4.7 IWMP REVIEW AND UPDATE

The latest IWMP was finalised and approved by Council on 27 May 2020. The next generation IWMP is currently scheduled to be developed during 2024/2025. However, this is planned to be shifted in order to tie in with the next IDP development cycle. As per discussions and recommendations from Saliem Haider of DEADP at both the District and Regional Waste forum meetings a letter is to be sent to the Department to request an extension of the current IWMP plan so that the IWMP plan cycle can be brought in line with the IDP cycle.

5. CONCLUSIONS AND RECOMMENDATIONS

Based on the goals that were set in the IWMP for each solid waste management category it is evident that the Overstrand Municipality followed the IWMP and implemented the actions listed in the implementation schedule as far as possible.

The Overstrand Municipality is committed to deliver efficient waste management services as is evident from the basic services they render as well as the supporting functions by implementing awareness and education, post-collection recycling, garden waste chipping and composting.

Since the finalisation of the IWMP, the Overstrand have also developed an Organic Waste Diversion Plan as required by the amended Gansbaai Landfill operational permit and are implementing it alongside the IWMP in order to achieve diversion targets. The total average organic fraction diverted from 1 July 2022 to 30 June 2023 was 34.74%. However, a diversion percentage above 50% was achieved during 4 separate months. The 50% target was therefore partially reached and just needs to be consistently achieved.

One concern is the availability of funds for capital projects which would require large sums such as the future rehabilitation of disposal facilities.

Another challenge identified in the Overstrand is the amount of illegal dumping. This will require co-operation between the public, law enforcement and the solid waste department.

ANNEXURE 1

AWARENESS AND EDUCATION EXAMPLES

July 2022

Gans-Berg Nuus / News

Gemeenskapnuus / News 9

Gans-Berg
News

OFFICE:
028 205 0100



Michelle van Zyl
Owner / Advertising
ads@gansberg.co.za
078 010 8286



Alethea Baytopp
Graphic Designer
design@gansberg.co.za
Editorial Content
info@gansberg.co.za



Hardus Botha
Journalist
info2@gansberg.co.za
062 786 0494



Saskia van Zyl
Advertising Consultant
ads2@gansberg.co.za
063 822 5799

Gansbaai se sogenaamde 'Asgate' -Wat 'n verrassing!-

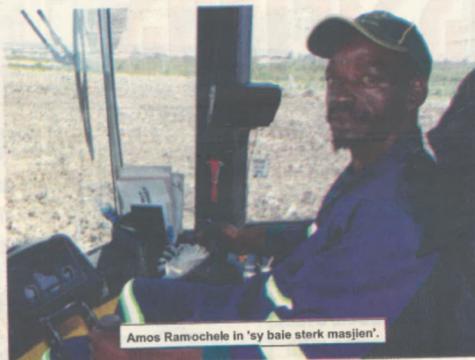
Die beskrywing 'asgate' is sonder twyfel nie op Gansbaai se Stortingsterrein van toepassing nie - daarvoor word dit té professioneel bedryf en bestuur. 'n Mens staan ook verstom oor die daaglikse netheid en onderhoud van hierdie terrein.

Overstrand Munisipaliteit is onder die wakende oog van Craig Mitchell (Bestuurder: Vaste Afval: Beplanning) in beheer van die Stortingsterrein, maar dit word op kontrakbasis bedryf. Die kontrakteur is *Enviroserve Waist Management* en die Sub-kontrakteur is *Aqua Bulk Energy*. Gesels mens met Norman Heynie in sy kantoor by die Stortingsterrein, staan jy verstom by die aanhoor van hoe professioneel die terrein bestuur word. "Alle inligting en statistieke van gister se tonne-mates afval wat in al die verskillende kategorieë ingekom het, is vroeg die volgende dag op die stelsel beskikbaar," het Norman gesê. Dit is maar 'n eenvoudige voorbeeld van wat alles daar gebeur om die terrein suksesvol te bedryf en te bestuur.

Maandelikse oudits word stiptelik uitgevoer, met die nodige verslagdoening daarna. Norman is 'n man met baie jare se praktiese bestuurs-ervaring op die gebied van afvalbestuur en dit is sy 16de jaar wat hy by *Enviroserve Waist Management* in diens is.

Met die nuuskierige rondstap deur Gans-Berg Nuus se joernalis op die terrein, het die enorme en kragtige *LC Bomag Refuse Compactor* van 37 ton van die *Bomag Fayat Group* sy aandag vasgevang. Die operateur van dié masjien is Amos Ramochele wat al vir agt jaar op groot masjiene werk. "Ek hanteer hierdie masjien sedert April 2021 en ek kan maar net sê hy is sterk, baie, baie sterk," het Amos gesê. Die masjien kan gelyktydig stoot en kompakteer. Die enorme staalwiele het 'tone', soos dit bekendstaan, op die loopvlak van die wiele - so groot dat dit lyk asof 'n land daarmee geploeg kan word.

Die volgende volume-statistieke laat mens met ander oë na Gansbaai se Stortingsterrein kyk. Die gemiddelde maandelikse tonne-mates wat op die terrein hanteer word, was vir die 2021/2022 finansiële jaar soos volg: **Algemene afval - 800 ton per maand; Bourommel en Dekmateriaal - 1200 ton per maand; Tuinafval op die**



Amos Ramochele in 'sy baie sterk masjien'.

perseel opgekop - 140 ton per maand; Afval herwin deur die MRF - 22 Ton per maand.

Craig Mitchell (Manager Solid Waste: Planning) provided Gans-Berg News with the following interesting facts regarding the Gansbaai Landfill Site:

The public can dispose of the following waste types at the site:

Mixed clean recyclable materials -

These can be offloaded at the Materials Recovery Facility the large building on the lefthand side once you have entered the site where the recyclable materials will be sorted by the site staff into the different waste material types for recycling.

Garden and green waste - This can be offloaded at the chipping area on the site where it will be chipped before being transported onto the site for use as cover on the side slopes and working face as required.

General waste - this is disposed of at the working face on the site where it is spread and compacted by the dedicated waste compactor on site. The working face is covered daily with sand, small builder's rubble, or chipped green waste at the end of each day. Loads of up to 1 ton can be disposed of for free. Should the load weigh more than a ton you will be charged for disposal at a rate of R282.00 per ton including VAT. Note that there is also a drop-off located next to the Materials Recovery Facility for the convenience of the public for the offloading of small waste volumes delivered by small vehicles which cannot access the site.

Clean soil and small builders' rubble - all loads are accepted for free, however, note that large or contaminated builders' rubble (i.e., mixed with wood, plastics or

other contaminates) is charged at the general waste per ton rate.

In addition to the above, the site also has two containers on-site that accept small volumes of household hazardous waste - for example, electronic waste, fluorescent tubes, old batteries, used oils and old paint tins. The site also has a hazardous waste bin on-site for the acceptance of small volumes of asbestos roof sheeting, this is limited to a maximum of 10m² per 6-month period and charged at a rate of R158.00 including Vat per unit.

Upon arrival at the site, the client will stop on the weighbridge and declare the waste type which the weighbridge operator will confirm that the driver has on their load, record the vehicle details, and weigh the vehicle in before directing them to the correct off-loading / disposal area.

Once the load has been offloaded the vehicle will again be weighed on the way out as loads over 1 ton are charged for (except for clean soil and builder's rubble) it is advisable not to mix loads and rather deliver separately to avoid being charged for the disposal of free material mixed with general waste.

Gansbaai se Stortingsterrein is vir alle gemeenskaplike beskikbaar vir die storting van alle kategorieë-afval.

Besigheids ure:
Maandae tot Vrydae vanaf 08:00 tot 18:00 en Saterdag vanaf 08:00 tot 15:00.

Die perseel is aan die einde van Voortrekkerstraat-verlenging geleë - met 'n netjiese teerpad tot by die hekke en weegbrug.

Hardus Botha



Die enorme opkasmasjien (Chipper) vir tuinafval.



Amos Ramochele op die masjien.



RECYCLE: IT'S AS SIMPLE AS 1, 2, 3

- **STEP 1:** Take a conscious decision to help protect the environment.
- **STEP 2:** Separate your household waste according to items that can be recycled and those that can't.
- **STEP 3:** Place the recyclable items in a clear plastic bag next to your wheelie bin/black bag on collection day.

And that is that.

Overstrand Municipality will collect your recyclables and transport it to the Waste Material Recovery Facility in Hermanus where it will be sorted, baled and forwarded to the respective operators that specialise in recycling specific items. Here is a quick reminder of those items you can safely dispose of in your clear plastic bag:

- ✓ **PAPER/CARDBOARD:** Newspapers, magazines, office paper and cardboard, including smaller items made from cardboard such as egg cartons and boxes that contained your cereal, toothpaste or medication.
- ✓ **GLASS:** Bottles, containers or receptacles made from glass. Note that large shards of shattered glass (e.g. windscreens, window panes) must be disposed of at building-rubble sites.
- ✓ **PLASTICS:** Cold-drink, water and milk containers; containers that contained items such as cooking oil and household cleansing aids; shopping and refuse bags; yoghurt and ice-cream containers; cling film.
- ✓ **CANS:** Cold-drink and food cans; deodorant and hairspray cans; cans that contained household cleansing aids. Note that tins containing things such as varnish, paint or thinners must be disposed of at building-rubble sites.

How to get started:

Clear plastic bags are available free of charge from the municipal offices in Kleinmond (5th Avenue) and Hermanus (Magnolia Street) as well as the Waste Material Recovery Facility in Schulphoek Road, next to the Water Treatment

Works and Zwelihle Primary School.

Every time we collect a clear plastic bag from your premises, we will simultaneously replace it with another one, also free of charge.

We do, however, suggest that you buy a roll of clear plastic bags when next you go grocery shopping. This can come in handy when your replacement bag gets lost or if you find that you need more than one bag, for example when family/friends visit over long weekends or during holidays.



Remember, you are welcome to drop large amounts of recyclables off at the Waste Material Recovery Facility. This facility is open for acceptance of recyclable waste from the general public between 08:00 and 17:00 from Monday to Friday and until 14:00 on public holidays that fall on a weekday.

Currently, this facility is closed over weekends, but recyclables can be left at the drop-off on Saturdays between the hours of 09:00-16:00.

Let's all do your bit to prevent recyclables from ending up in a landfill site. It's easy! If you are still a little uncertain about what all can be recycled, feel free to call Hermanus Recycling on 083 310 2319 for assistance.

Pedestrian-friendly sidewalk gardening



The enthusiasm with which home owners are assisting to beautify our neighbourhoods by sprucing up their sidewalks is much appreciated.

A word of caution, though: As much as the appearance of your sidewalk can up the aesthetic appeal and value of your property, be sure that your garden does not spill onto the sidewalk to such an extent that it would be virtually impossible for a pedestrian (leave alone a mother pushing a stroller) to move along the sidewalk without having to step into the road and, by inference, into traffic.

In accordance with municipal by-laws, sidewalks are classified as road reserves. A road reserve is the area parallel to adjacent erven, including the road itself.

In most cases, it is the space between an erf boundary and the road edge and, besides being reserved for the placement of various underground services, the intention with sidewalks is to ensure that pedestrians can safely negotiate public roads.

In terms of Overstrand's Policy on the Administration of Immovable Property, sidewalk encroachments can be regarded as illegal if they do not comply with the stipulations pertaining to "Projections, Projecting Structures and Encroachments" as set out in paragraphs 63 and 64 of this policy.

Accordingly, home owners and landscapers should exercise constraint when planting shrubs, trees and/or flowering plants as an extension of a garden onto the road reserve. Neither should they place rocks or loose stones on sidewalks in a manner that would obstruct freedom of pedestrian movement.

Owners/developers who wish to beautify sidewalks are, therefore, advised to submit an application indicating the intended layout and dimensions to the relevant Property Administration Department prior to disturbing sidewalks in any way.

For assistance in this regard, feel free to contact us by sending an email to enquiries@overstrand.gov.za.

PEARLY BEACH DROP-OFF OPEN FOR BUSINESS

Overstrand Municipality encourages Pearly Beach and Eluxolweni residents to make use of the Pearly Beach drop-off facility to dispose of their excess general household waste (such as clean recyclables and black bags) as well as clean garden waste. Very small quantities of building rubble (less than a bakkie load) can also be disposed of here. As this is a small drop-off facility, it only accepts small vehicle loads (e.g. a car with a trailer), and the number of loads that can be delivered is also limited to a maximum of two per household per day.

For the disposal of larger loads, residents should please make use of the Gansbaai landfill site.

Drop-off operating times:

- Mondays, Tuesdays, Thursdays, Fridays: 08:00 to 17:00
- Wednesdays: Closed
- Saturdays: 10:00 to 16:00
- Sundays: 13:00 to 17:00
- Public holidays: 10:00 to 15:00



Refuse collection schedule for Gansbaai:

- MONDAY: Pearly Beach
- TUESDAY: De Kelders, Masakhane, Beverly Hills
- WEDNESDAY: Franskraal, portion of Gansbaai Industria, Masakhane
- THURSDAY: Kleinbaai, Baardskeedersbos, portion of Gansbaai CBD
- FRIDAY: Gansbaai, Perlemoen Bay, Blompark, Masakhane, Beverly Hills

FARMING REBATE

Owners/farmers who can provide proof that their properties are used for bona fide farming purposes can apply for a rebate on property rates.

Applications close on 30 September 2022 and the necessary forms can be downloaded from www.overstrand.gov.za. Go to Documents, and click on Forms.

Direct queries in this regard to Overstrand's Rates and Data Control Office at 028 313 8000 or send an e-mail to enquiries@overstrand.gov.za.

FIRST THURSDAYS

Given that the official opening of this year's Kalfiefee happens to fall on the first Thursday in August, Mayor Rabie requested that the scheduled First Thursday meeting with residents in and around Kleinmond be postponed by a week.

Don't miss this opportunity to share your inputs and ideas on how municipal service delivery in your area can be improved.

The Mayor and her team look forward to meeting you one-on-one at the Town Hall in Kleinmond on **11 August from 17:00 – 19:00**.

Note, too, that September's meeting will be held in Gansbaai.

Keep Hermanus clean with your recycling

Writer
Annette Yell

Recycling has always been important for Hermanus but unfortunately it ground to a halt after the 2018 riots when Walker Bay Recycling was burnt down.

At the end of last year a new Material Recovery Facility (MRF) opened its doors at the bottom of Schulphoek road with longtime resident and previous owner of Walker Bay Recycling back at the helm.

Over the last four years many questions were raised by the public about recycling, especially after several attempts by independent contractors opened and closed their doors.

According to the municipal manager Dean O'Neill, the new MRF is open for recycling of clear bags as in the past. Recycling from Hermanus and Kleinmond is collected and sorted here. (Gansbaai has its own recycling facility at the landfill site). The Hermanus MRF is open to businesses and households for the delivery of recyclable waste, since November 2021, with households receiving a clear plastic bag in which all paper, cardboard, tin cans, glass bottles and plastic can be placed for recycling.

Here are some of the frequently asked questions regarding recycling.

Does it include garden and building rubble?

No household or garden waste will be accepted at the MRF. Household waste can be disposed of at the public drop-off next door and garden waste needs to be taken to the Hermanus Transfer Station site where it will be chipped and then

sent to Karwyderskraal for composting.

Is the MRF currently recycling at the same level as before the facility burnt down?

The MRF has been fully operational since November 2021 and for the December 2021 and January 2022 period, the average tonnage of materials removed off the site was almost 70 ton per month which was an excellent start.

Glass, newspapers, plastic water bottles and milk cartons, newspapers, cereal boxes, and cardboard boxes are just some of the common items that are recycled every day. Overstrand Municipality would like to thank all households who are disposing of their recycling responsibly.

"We are already seeing the difference. If all of us were to recycle just a few items per day, we can go a long way in improving the environment for future generations," said Overstrand's Solid Waste Manager, Craig Mitchell.

Must people put out their black and white bags for collection and on which days?

The clear recycling bags are collected on the same day as the black bags by the municipal refuse trucks and are transported to the MRF where it is offloaded in the receiving bay to be sorted and baled.

For every clear plastic bag placed out by a household, a new one will be supplied as replacement when the full bag is collected.

As expected, there is still some growing pains, households who did not receive a replacement clear bag on collection day or require an additional clear bag due to volumes, can collect a

replacement bag at the following locations:

- Hermanus Administration in Magnolia Street from Yvonne at the operational help desk in the main building reception/rates hall.
- Kleinmond Administration in 5th Avenue from Nosphe at the operational office help desk.

No refuse (black) bags may be left on pavements or on top of or outside bins in baboon-affected areas. All bins used in baboon-affected areas should be baboon-proof and locked.

What is the purpose of the Karwyderskraal Landfill site?

The Karwyderskraal Landfill Site is the property of the Overberg District Municipality (ODM) and became functional in 2002.

The construction of Cell 4 commenced in June 2018 and required the excavation of 130 000 m³ of clay and covers an area of ± 4,5 hectares.

A ribbon-cutting ceremony, for the ceremonial opening of Cell 4 regional landfill facility constructed in Karwyderskraal, was held early in 2019.

The new cell is approximately 3 to 4 metres deep and will have airspace capacity of 524 000m³ of solid waste which will give the cell a lifespan of approximately 8 years, based on current disposal rates.

Karwyderskraal Landfill site will provide airspace to the user municipalities for many years to come. The life expectancy of the facility is 57 years.

Cell 4, and the facility, complies with stringent conditions set by the National and Provincial

Government. Amongst other precautions, a high density, polyethylene plastic liner was installed to ensure the prevention of groundwater pollution.

Overstrand residents who make use of the Overberg District Municipality's (ODM) landfill site at Karwyderskraal, are reminded that they only accept builder's rubble, chipped garden waste and general household waste.

Residents, contractors, or anyone who transports builder's rubble, chipped garden refuse or any domestic waste must first register with ODM as a site user. Unless your name appears on the database, you will not be allowed to dispose of any waste - even if you show up at the landfill site for the first time.

Registration forms are available from Ingrid Marti at imarti@odm.org.za or at the Karwyderskraal weighbridge office.

The Karwyderskraal regional landfill facility is open between 08:00 and 17:00 from Monday to Friday. It is closed on weekends, open on public holidays which fall on a weekday.

Do's and Don'ts of Recycling

Recycling does not have to be difficult. It is important to know what we should and should not put in the recycling bags. Here are some simple tips:

- The golden rule when it comes to using your clear plastic bag is to ensure items are clean and dry. Black bags are for 'wet' waste, things that cannot be recycled.
- Please wrap broken glass in newspaper before placing in bags or wheelie bins to prevent

Continue reading on P3

Clear bags the way to go

Writer & Photography
Annette Yell

Jan van Niekerk wants to encourage more residents to recycle their dry waste.

"Fewer people recycle than before and when you drive through the streets on refuse removal day, you can see that not everyone is putting out their clear bags like they used to."

The Overstrand Municipality's new Material Recovery Facility (MRF) has been up and running since November last year, but Overstrand residents seem to have fallen out of the habit of recycling.

The Overstrand Municipality maintained a proud tradition with its Recycling at Source programme that first established a two-bag system of waste removal in 2002, succeeded by a mechanised system of recycling in 2010.

This progressive development was severely impacted during the 2018 social unrest in Hermanus when a major section of Walker Bay Recycling's depot in Zwellihle, was completely burnt down. The municipality stopped the two-bag collection system and recycling almost came to a complete standstill, save for those stalwarts who continued to take their recyclables to independent contractors.

Last year, Hermanus Recycling was the successful contractor at the MRF, and they group, sort, and bale recyclable items. Jan is concerned about seeing only black bags on refuse removal days. He attributes this to the

fact that his business is much smaller, and not as prominent as it used to be. Jan's former company, Walker Bay Recycling, also used to do collections.

The challenge now is to get the people back on board. "Every household should recycle, but unfortunately most people don't have a place for a second bin in their kitchen," says Jan.

He encourages residents to buy one roll of clear refuse bags. If you use a black bag, your recycling will end up in the landfill. If you put out a white or clear bag, the municipality will reward you by leaving a replacement bag.

"The moment you don't use a white bag, you are out of the system," says Jan.

According to him, the MRF gets many visitors and just last week he had a delegation from Orania who came to look at their setup. Many people see this as a model to be copied.

Residents are encouraged to hand in their cans, bottles, paper, and plastic in a transparent bag at the facility situated in Schulphoek, next to the Water Treatment Works and Zwellihle Primary School. The operating hours for acceptance of general waste is between 08:00 and 17:00 from Monday to Friday and until 14:00 on public holidays that fall on a weekday.

The facility is currently closed on weekends but recyclables can be left at the drop off on a Saturday during the hours of 09:00 to 16:00.



TOP: Jan van Niekerk and his team at the Overstrand municipality's new Material Recovery Facility (MRF) that has been up and running since November last year.

ABOVE: Jan van Niekerk points to where the grouping of recyclable waste happens.

MEDIAVERKLARING / PRESS RELEASE

#Overstrand4all

ISSUED BY:**Municipal Manager: Dean O'Neill**

Tel: 028 313 8003 | mm@overstrand.gov.za

Overstrand Municipality

MEDIA ENQUIRIES:**Riana Steenekamp**

Tel: 028 313 8043 | rsteenekamp@overstrand.gov.za

**EMBARGO: Immediate release****17 Oktober 2022****Residents hot under collar over baboon proof bins**

Residents in Kleinmond and surrounding towns, including Rooi-Els, are very upset after receiving a notice from Overstrand Municipality regarding animal proof containers for waste storage.

The notices that were handed out by the ECO Monitors are not final but in fact it is a notification to make residents aware of non-compliance and thereby informing them of the fact that they are required to have an animal proof container for the disposal of waste. The notice will give them a chance to become compliant with the Integrated Waste Management By-law.

The notices ensure that the Municipality has a record (paper trail) that homeowners were informed of a request to comply with an animal proof container. Similar notices were handed out in 2021 as we would like to give residents enough time to comply and to budget for the additional expense.

Overstrand Municipality's Integrated Waste Management Bylaw of 2021 stipulates that each home owner or tenant/ occupier must use animal-proof containers in all problem animal areas, and the Municipality may institute legal proceedings against the owner if the following waste management activities are not complied with.

The declared problem animal areas are Kleinmond (including Arabella), Betty's Bay, Rooiels, Pringle Bay, portion of Onrus, Voëlklip, Fernkloof (including the Golf Estate), Hermanus Heights, Eastcliff, Kwaiwater and a portion of Hawston.

'Animal-proof container' means an approved waste container of suitable design with a locking mechanism that prevents problem animals (wildlife or domestic) from gaining access to waste in a waste container, as required by the Municipality in specific areas.

A baboon proof bin doesn't have to be a wheelie bin but some people have been able to convert their bin for less than R250.

Baboon-resistant 240-litre Wheelie bins with locks can be purchased at the municipal offices and will be delivered to your home.

Alternatively, bins can be bought at any hardware store and baboon proof locks can be fitted, at an additional charge, on your existing bin.

The Hermanus Administration is able to supply the Kleinmond Administration with baboon proof containers (bins) upon request.

The process to be followed by residents are as follows:

- At the Kleinmond Finance office, pay R1 543 for the new bin (the price is inclusive of VAT and is valid 1 July 2022 – 30 June 2023).
- Take receipt to the Kleinmond Operational Management offices where it is handed in
- Operational Management team will then order the bin from Hermanus and deliver it to the resident.
- Remember, all bins used in baboon-affected areas should be baboon-proof and locked.
- R480 to replace a broken lock (the price is inclusive of VAT and is valid 1 July 2022 – 30 June 2023).

Hangklip-Kleinmond residents are often frustrated with the quality of the bin locking mechanism as well as the time it takes to receive their bin.

There are at least three private service providers in the Overstrand who can assist with transforming a wheelie bin to be baboon proofed. They are Hermanus Bobby Bins (076 203 8144), Betty's Bay Marco Handcraft (082 459 3907) and Pringle Bay Chacma Locks (079 515 0553). Please contact them directly to confirm their availability and current price.

Above is not a comprehensive list of service providers as future designs and manufactures may be included at the discretion of the Overstrand Waste Manager once their locking systems have been tested and found to comply with the requirements of the solid waste operational team.

So, the long and the short of it is:

- Secure bin with latch, strap, padlock or clip at all times
- No refuse (black) bags may be left on pavements or on top of or outside bins in baboon affected areas
- Please remember to not place excess rubbish bags next to the municipal bins. Any excessive refuse must be taken to the transfer stations

END/EIND



MEDIAVERKLARING / PRESS RELEASE

#Overstrand4all

ISSUED BY:**Municipal Manager: Dean O'Neill**

Tel: 028 313 8003 | mm@overstrand.gov.za

Overstrand Municipality

**MEDIA ENQUIRIES:****Riana Steenekamp**

Tel: 028 313 8043 | rsteenekamp@overstrand.gov.za

EMBARGO: Immediate release**10 November 2022****No change to household waste collection over the December holidays**

Waste collection will take place as per the usual refuse removal schedule over the festive season regardless of public holidays.

Please put your waste out early on the morning of the collection day as per the below collection schedule:

For Greater Hermanus - MONDAY: Vermont, Fisherhaven, Voëlklip • TUESDAY: Onrus, Chanteclair, Berghof, Sandbaai, Hemel-en-Aarde • WEDNESDAY: Zwelihle, Mount Pleasant • THURSDAY: Westcliff, Northcliff, houses in the CBD and Hermanus Industrial Area • FRIDAY: Hawston, Eastcliff, Hermanus Heights, Kwaaiwater, Fernkloof

For Hangklip-Kleinmond - MONDAY: Rooi-Els, Kleinmond Sea Avenues, Kleinmond Mountain Avenues, Klein Berlyn and Heuningkloof • TUESDAY: Proteadorp, Overhills, Mountain View, Extension 6, Palmiet, Sunny Seas, Jock's Bay • Wednesdays: Betty's Bay and Mooiuitsig • THURSDAYS: Pringle Bay • FRIDAYS: Businesses

For Gansbaai - MONDAY: Pearly Beach • TUESDAY: De Kelders, Masakhane, Beverly Hills • WEDNESDAY: Franskraal, portion of Gansbaai Industria and Masakhane • THURSDAY: Kleinbaai, Baardskeerdersbos and portion of Gansbaai CBD • FRIDAY: Gansbaai, Perlemoen Bay, Blompark, Masakhane, Beverly Hills

For Stanford - TUESDAY: North of De Bruyn Street • THURSDAY: South of De Bruyn Street

Note that should you be staying in an area which has been declared a problem animal area your waste needs to be stored and placed out on the collection day in an animal proof container. The following areas have been declared animal problem areas Voëlklip, Fernkloof (including the Golf Estate), Hermanus Heights, Eastcliff, Kwaaiwater, a portion of Onrus, a portion of Hawston, Kleinmond (including Arabella), Betty's Bay, Rooiels and Pringle Bay.

If you generate excess waste over this festive season, please take the additional waste that you generate to one of our facilities for the safe disposal of your waste. The following facilities are available in the Overstrand to assist you with the disposal of your excess waste: Pearly Beach Drop-off, Gansbaai Landfill Site, Stanford Drop-off, Voëlklip Drop-off, Voëlklip mini Drop-off, Hermanus Drop-off, Hawston Drop-off, Kleinmond Transfer Station, Bettys Bay mini Drop-off, Betty's Bay Garden Waste Drop-off and Pringle Bay mini Drop-off.

Note that the mini drop-off sites will only accept a few bags from people (small volumes) and are in place to accept waste from the public leaving the area before the weekly waste collection to prevent the waste being left out on the pavement when visitors leave the area and are available to customers after hours. The Drop-off's and Transfer Stations will accept loads of up to 1 ton for free, loads which are larger than 1 ton but under 3 tons will be charged for at these facilities and any loads larger than 3 tons will have to be disposed of directly to the Karwyderskraal Landfill.

Please place any clean recycling waste out with your general waste on your normal waste collection day in a clear bag, you will then be provided with a replacement clear bag when it is collected. The collected clear bags are taken to the Materials Recovery Facility where they are sorted into the different recyclable streams for recycling.

Garden and green waste should be delivered to one of the following facilities for chipping: Pearly Beach Drop-off, Gansbaai Landfill Site, Stanford Drop-off, Voëlklip Drop-off, Hermanus Transfer Station, Kleinmond Transfer Station or the Bettys Bay Garden Waste Drop-off site.

Everyone has a part to play in cleaning their surrounding environment and keeping our municipal outdoor areas beautiful. Overstrand Municipality thanks you for assisting us to correctly manage your waste.

Transfer Station / Drop-off	Day/s	Operating Times
Gansbaai Administration		
Gansbaai Landfill Site	Mondays - Fridays	08:00 - 18:00
	Saturdays	08:00 - 15:00
	Sundays	Closed
	Public holidays	08:00 - 15:00
Stanford Drop-off	Mondays - Fridays	08:00 - 17:00
	Saturdays	09:00 - 14:00
	Sundays	Closed
	Public holidays	09:00 - 14:00
Pearly Beach Drop-off	Mondays, Tuesdays, Thursdays & Fridays	08:00 - 17:00
	Wednesdays	Closed
	Saturdays	10:00 - 16:00
	Sundays	13:00 - 17:00
	Public holidays	10:00 - 15:00
Hermanus Administration		
Hermanus Transfer Station	Mondays - Fridays	08:00 - 18:00
	Saturdays	09:00 - 16:00
	Sundays	Closed
	Public holidays	09:00 - 14:00
Hermanus Drop-off	Mondays - Fridays	08:00 - 18:00
	Saturdays	09:00 - 16:00
	Sundays	Closed
	Public holidays	09:00 - 14:00
Voelklip Drop-off	Mondays - Fridays	08:00 - 18:00
	Saturdays	09:00 - 16:00
	Sundays	Closed

	Public holidays	09:00 - 14:00
<i>Voelklip Min Drop-off</i>	Mondays - Fridays	08:00 - 18:00
	Saturdays	09:00 - 16:00
	Sundays	10:00 - 17:00
	Public holidays	09:00 - 14:00
Hawston Drop off	Mondays - Fridays	08:00 - 18:00
	Saturdays	09:00 - 16:00
	Sundays	10:00 - 17:00
	Public holidays	09:00 - 14:00
Kleinmond Administration		
Kleinmond Transfer Station	Mondays - Fridays	07:30 - 18:00
	Saturdays & Sundays	08:00 - 16:00
	Public holidays	08:00 - 16:00
Bettys Bay Garden Waste Drop-off	Mondays - Sundays	08:00 - 16:00
	Public holidays	08:00 - 16:00
<i>Bettys Bay mini Drop-off</i>	Mondays - Sundays	08:00 - 16:00
	Public holidays	08:00 - 16:00
<i>Pringle Bay mini Drop-off</i>	Mondays - Sundays	08:00 - 16:00
	Public holidays	08:00 - 16:00

END/EINDE

LET'S TALK

Waste collection over the December holidays

Household waste collection will take place as usual and there will be no changes to the refuse removal schedule over the festive season regardless of public holidays.

Please put your waste out early on the morning of the collection day as per the below collection schedule:

Greater Hermanus - MONDAY: Vermont, Fisherhaven, Voëlkop • TUESDAY: Onrus, Chanteclair, Berghof, Sandbaai, Hemel-en-Aarde • WEDNESDAY: Zwelihle, Mount Pleasant • THURSDAY: Westcliff, Northcliff, houses in the CBD and Hermanus Industrial Area • FRIDAY: Hawston, Eastcliff, Hermanus Heights, Kwaaiwater, Fernkloof.

Hangklip-Kleinmond - MONDAY: Rooiels, Kleinmond Sea Avenues, Kleinmond Mountain Avenues, Klein Beryl and Heuningkloof • TUESDAY: Proteadorp, Overhills, Mountain View, Extension 6, Palmiet, Sunny Seas, Jock's Bay • WEDNESDAY: Betty's Bay and Mooiuitsig • THURSDAY: Pringle Bay • FRIDAY: Businesses.

Gansbaai - MONDAY: Pearly Beach • TUESDAY: De Kelders, Masakhane, Beverly Hills • WEDNESDAY: Franskraal, portion of Gansbaai Industria and Masakhane • THURSDAY: Kleinbaai, Baardskeedersbos and portion of Gansbaai CBD • FRIDAY: Gansbaai, Perlemoen Bay, Blompark, Masakhane, Beverly Hills.

Stanford - TUESDAY: North of De Bruyn Street • THURSDAY: South of De Bruyn Street.

Note that should you be staying in an area which has been declared a problem animal area your waste needs to be stored and placed out on the collection day in an animal-proof container. The following areas have been declared animal problem areas: Voëlkop, Fernkloof (including the Golf Estate), Hermanus Heights, Eastcliff, Kwaaiwater, a portion of Onrus, a portion of Hawston, Kleinmond (including Arabella), Betty's Bay, Rooiels and Pringle Bay.

If you generate excess waste over this festive season, please take the addi-

tional waste to one of the municipal facilities for the safe disposal of your waste. The following facilities are available in the Overstrand to assist you with the disposal of your excess waste: Pearly Beach Drop-off, Gansbaai Landfill Site, Stanford Drop-off, Voëlkop Drop-off, Voëlkop mini Drop-off, Hermanus Drop-off, Hawston Drop-off, Kleinmond Transfer Station, Betty's Bay mini Drop-off, Betty's Bay Garden Waste Drop-off and Pringle Bay mini Drop-off.

Note that the mini drop-off sites will only accept a few bags from people (small volumes) and are in place to accept waste from the public leaving the area before the weekly waste collection to prevent the waste being left out on the pavement when visitors leave the area.

These sites are available to customers after hours. The Drop-offs and Transfer Stations will accept loads of up to 1 ton for free; loads which are larger than 1 ton but under 3 tons will be charged for at these facilities and any loads larger than 3 tons will have to be

disposed of directly at the Karwyderskraal Landfill.

Please place any clean recycling waste out with your general waste on your normal waste collection day in a clear bag; you will then be provided with a replacement clear bag when it is collected. The collected clear bags are taken to the Materials Recovery Facility (MRF) in Hermanus where they are sorted into the different recyclable streams for recycling.

Garden and green waste should be delivered to one of the following facilities for chipping: Pearly Beach Drop-off, Gansbaai Landfill Site, Stanford Drop-off, Voëlkop Drop-off, Hermanus Transfer Station, Kleinmond Transfer Station or the Betty's Bay Garden Waste Drop-off site.

Everyone has a part to play in cleaning their surrounding environment and keeping our municipal outdoor areas beautiful. Overstrand Municipality thanks you for assisting them to correctly manage your waste.



DEADLINES

Advertisement bookings by 17:00 on a Monday.
•••••
Submissions of ready-made adverts* before 12:00 on a Tuesday.

IN-HOUSE AD DESIGN

If you would like us to design your advert for you, please ensure that you send us the material/info before end of business on a Monday.

This is in order to allow enough time for the advert to be made up by our design team, and for any changes to be finalised for approval by 12:00 on a Tuesday.

CANCELLATIONS

No cancellations of advert bookings will be accepted after 12:00 on a Tuesday.

DISTRIBUTION

The Village NEWS is printed on a Wednesday and distributed

Have your say about baboons

Waste collection over the December holidays



Household waste collection will take place as usual and there will be no changes to the refuse removal schedule over the festive season regardless of public holidays.

Note that should you be staying in an area which has been declared a problem animal area your waste needs to be stored and placed out on the collection day in an animal-proof container. The following areas have been declared animal problem

areas: Voëlklip, Fernkloof (including the Golf Estate), Hermanus Heights, Eastcliff, Kwaiwater, a portion of Onrus, a portion of Hawston, Kleinmond (including Arabella), Betty's Bay, Rooiels and Pringle Bay.

If you generate excess waste over this festive season, please take the additional waste to one of the municipal facilities for the safe disposal of your waste. The following facilities are available in the Overstrand to assist you with the disposal of your

excess waste:

- Pearly Beach Drop-off, Gansbaai Landfill Site, Stanford Drop-off, Voëlklip Drop-off, Voëlklip mini Drop-off, Hermanus Drop-off, Hawston Drop-off, Kleinmond Transfer Station, Betty's Bay mini Drop-off, Betty's Bay Garden Waste Drop-off, Betty's Bay Pringle Bay mini Drop-off.

Note that the mini drop-off sites will only

accept a few bags from people (small volumes) and are in place to accept waste from the public leaving the area before the weekly waste collection to prevent the waste being left out on the pavement when visitors leave the area.

These sites are available to customers after hours. The Drop-offs and Transfer Stations will accept loads of up to 1 ton for free; loads which are larger than 1 ton but under 3 tons will be charged for at these facilities and any loads larger than 3 tons will have to be disposed of directly at the Karwyderskraal Landfill.

Please place any clean recycling waste out with your general waste on your normal waste collection day in a clear bag; you will then be provided with a replacement clear bag when it is collected. The collected clear bags are taken to the Materials Recovery Facility (MRF) in Hermanus where they are sorted into the different recyclable streams for recycling.

Garden and green waste should be delivered to one of the following facilities for chipping: Pearly Beach Drop-off, Gansbaai Landfill Site, Stanford Drop-off, Voëlklip Drop-off, Hermanus Transfer Station, Kleinmond Transfer Station or the Betty's Bay Garden Waste Drop-off site.

Please put your waste out early on the morning of the collection day as per the normal collection schedule below:

Greater Hermanus - MONDAY: Vermont, Fisherhaven, Voëlklip • TUESDAY: Onrus, Chanteclair, Berghof, Sandbaai, Hemelen-Aarde • WEDNESDAY: Zwilhe, Mount Pleasant • THURSDAY: Westcliff, Northcliff, houses in the CBD and Hermanus Industrial Area • FRIDAY: Hawston, Eastcliff, Hermanus Heights, Kwaiwater, Fernkloof.

Hangklip-Kleinmond - MONDAY: Rooiels, Kleinmond Sea Avenues, Kleinmond Mountain Avenues, Klein Berlyn and Heuningkloof • TUESDAY: Proteadorp, Overhills, Mountain View, Extension 6, Palmiet, Sunny Seas, Jock's Bay • WEDNESDAY: Betty's Bay and Mooiuisig • THURSDAY: Pringle Bay • FRIDAY: Businesses.

Gansbaai - MONDAY: Pearly Beach • TUESDAY: De Kelders, Masakhane, Beverly Hills • WEDNESDAY: Franskraal, portion of Gansbaai Industria and Masakhane • THURSDAY: Kleinbaai, Baardskeerdersbos and portion of Gansbaai CBD • FRIDAY: Gansbaai, Perlemoen Bay, Blompark, Masakhane, Beverly Hills.

Stanford - TUESDAY: North of De Bruyn Street • THURSDAY: South of De Bruyn Street.

Everyone has a part to play in cleaning their surrounding environment and keeping our municipal outdoor areas beautiful. Overstrand Municipality thanks you for assisting them to correctly manage your waste.

<p>OVERSTRAND MUNICIPALITY ERF 4887, 4 FOURTH AVENUE, VOËLKLIP, HERMANUS, OVERSTRAND MUNICIPAL AREA: APPLICATION FOR REMOVAL OF RESTRICTIVE TITLE DEED CONDITIONS, DEPARTURE AND DETERMINATION OF AN ADMINISTRATIVE PENALTY: MESSRS FVS TOWN AND REGIONAL PLANNERS ON BEHALF OF MCR DEVILLIERS</p> <p>Notice is hereby given in terms of Sections 47 and 48 of the Overstrand Municipality Amendment By-Law on Municipal Land Use Planning, 2020 (By-Law) of the following applications applicable to Erf 4887, Hermanus, namely:</p> <p>Removal of Restrictive Title Deed Conditions Application in terms of Section 16(2)(f) of the By-Law for the removal of restrictive title deed conditions 3.10 and 3.11 as contained in Title Deed T52603/2003 of the property.</p> <p>Departure Application in terms of Section 16(2)(b) of the By-Law to:</p> <ul style="list-style-type: none"> relax the street building line from 4m to 2m (Fourth Avenue) to accommodate the extension of the patio roof; and relax the street building line from 4m to 0m (Tenth Street) to accommodate the conversion of the existing garage into a staff bedroom. <p>Determination of an Administrative Penalty Application in terms of the provisions of Section 90 of the By-Law for the determination of an administrative penalty.</p> <p>Details regarding the proposal are available for inspection during weekdays between 08:00 and 16:30 at the Department: Town Planning at 16 Paterson Street, Hermanus.</p> <p>Any comment must be in writing, quoting your name, address and contact details, as well as your interest in the application and the reasons for comment, which comment must reach the Municipality (16 Paterson Street, Hermanus / (f) 028 313 2093 / (e) alida@overstrand.gov.za) on or before 27 January 2023. Telephonic enquiries can be made to the Town Planner, Mr. P. Roux at 028 313 8900. The Municipality may refuse to accept comments received after the closing date. Any persons who cannot read or write may visit the above appropriate Municipal Department where a Municipal official will assist them in formulating their comment.</p> <p>DGI O'Neill MUNICIPAL MANAGER Overstrand Municipality P.O. Box 20 HERMANUS 7200</p> <p>Municipal Notice No. 171/2022</p>	<p>OVERSTRAND MUNISIPALITEIT ERF 4887, VIERDELAAN 4, VOËLKLIP, HERMANUS, OVERSTRAND MUNISIPALE AREA: AANSOEK VIR OPHEFFING VAN BEPERKENDE TITELAKTEVOORWAARDES, AFWYKING EN BEPALING VAN 'N ADMINISTRATIEWE BOETE: MNR FVS STAD- EN STREEKSBEPLANNERS NAMENS MCR DEVILLIERS</p> <p>Kennis word hiermee gee ingevolge Artikel 47 en 48 van die Overstrand Munisipaliteit Wysigingsverordening vir Munisipale Grondgebruikbeplanning, 2020 (Verordening) van die volgende aansoek van toepassing op Erf 4887, Hermanus, naamlik:</p> <p>Opheffing van Beperkende Titelaktevoorwaarde Aansoek ingevolge Artikel 16(2)(f) van die Verordening vir die opheffing van beperkende titelaktevoorwaardes 3.10 en 3.11 soos vervat in Titelakte T52603/2003 van die eiendom.</p> <p>Afwyking Aansoek ingevolge Artikel 16(2)(b) van die Verordening ten einde die:</p> <ul style="list-style-type: none"> straatboulyn te verslap vanaf 4m na 2m (Vierdelaan) om die verlenging van die patio'dek te akkommodeer; en straatboulyn te verslap vanaf 4m na 0m (Tiendestraat) om die omskepning van die bestaende motorhuis in 'n bediendekwartier te akkommodeer. <p>Bepaling van 'n Administratiewe Boete Aansoek ingevolge die bepaling van Artikel 90 van die Verordening vir die bepaling van 'n administratiewe boete.</p> <p>Besonderhede aangaande die voorstel lê ter insae gedurende weksdae tussen 08:00 en 16:30 by die Departement: Stadsbeplanning te Patersonstraat 16, Hermanus.</p> <p>Enige kommentare moet skriftelik wees, u naam, adres, en kontakbesonderhede bevat, sowel as u belang in die aansoek en die redes vir kommentaar, welke kommentaar die Munisipaliteit (Patersonstraat 16, Hermanus / (f) 028 313 2093 / (e) alida@overstrand.gov.za) moet bereik voor of op 27 Januarie 2023. Telefoniese navrae kan gerig word aan die Stadsbeplanner, Mnr. P. Roux by 028 313 8900. Die Munisipaliteit mag weier om kommentare te aanvaar na die sluitingsdatum. Enige persone wat nie kan lees of skryf nie kan bogenoemde toepaslike Munisipale Departement besoek waar hul deur 'n munisipale amptenaar bygestaan sal word ten einde hul kommentaar te formuleer.</p> <p>DGI O'Neill MUNISIPALE BESTUURDER Overstrand Munisipaliteit Posbus 20 HERMANUS 7200</p> <p>Munisipale Kennisgewing Nr. 171/2022</p>	<p>UMASIPALA WASE-OVERSTRAND ISIZA SAMA- 4887, 4 FOURTH AVENUE, VOËLKLIP, EHERMANUS, UMMANDLA KAMASIPALA WASE-OVERSTRAND: ISICELO SOKUSUSWA KWEMEKO/ KOMQATHANGO YETAYITILE ETHINTELEWEYO, UKUPHAMBUKA NOKUMISELA ISOHLWAYO SOLAWULO: MESSRS FVS TOWN AND REGIONAL PLANNERS ON EGAMENI LIKA MCR DEVILLIERS</p> <p>Isaziso sinikwe ngokuphathelele kwiCandelo lama-48 – lomThetho kaMasipala wesilungiso wase-Overstad kuYilo lokuSetyenziswa koMhlaba kaMasipala (the Overstrand Municipality Amendment By-Law on Municipal Land Use Planning), 2020, (UmThetho kaMasipala) zezi zicelo zolandelayo zesiza sama- 4887, eHermanus, ezithi:</p> <p>Imeko yokususwa kwemeko zeYayitile eThintelweyo Isicelo ngokuphathelele kwiCandelo le- 16(2)(f) loMthetho kamasipala lokususa imeko yeYayitile ethintelweyo 3.10 nesi- 3.11 njengoko iqulthwe kule nombolo yeYayitile T52603/2003 yomhlaba.</p> <p>Ukuphambuka Isicelo ngokuphathelele kwiCandelo le- 16(2)(b) loMthetho kaMasipala:</p> <ul style="list-style-type: none"> kunyeniswa umda wokwakha ukusuka kwisi-4m ukuya kwisi-2m (Fourth Avenue) ukulungiselela ukwandisa uphila lwephashiyoo; no kunyeniswa umda wokwakha wesitrato ukusuka kwisi-4m ukuya kwi-0m (Tenth Street) ukulungiselela ukuguqula igaraji ekhoyo ibe ligumbi lokulala lestafa. <p>Ukumiselela isohlwayo solawulo Isicelo ngokuphathelele kwiCandelo lama-90 loMthetho kaMasipala wokuMiselela Isohlwayo solawulo.</p> <p>Imiba emayela nesi siphakamiso iyafumaneka ukuze ihlowe kwiintsuku zaphakathi evelkini phakathi kwentsimbi ye08:00 naye16:30 kwiSebe: LeziCwangciso ngeDolophu kwa16 Paterson Street, Hermanus</p> <p>linkcukacha ezipheleleyo mayela nezi zindululo ziyafumaneka ukuze zihlowe kwiintsuku zaphakathi evelkini ukusukela kwixesha eliphakathi kwentsimbi ye08:00 naye16:30 kwiSebe: LeziCwangciso zeDolophu, 16 Paterson Street, Hermanus.</p> <p>Naziphi na izimvo ezibhaliweyo zingangeniswa kwaMasipala (16 Paterson Street, Hermanus / (f)028 313 2093 (e) alida@overstrand.gov.za) ngomhla okanye ngaphambi komhla wama-27 EyoMqungu 2023, uchaze igama lakho, idilesi yakho neenkukacha zakho, umda wakho kwesi sicelo nezizathu zakho zokuhlomla. Imibuzo ngefolowini ingathunyelwa kuMchwangciso weDolophu, Mnu. O. Roux kwa028-313 8900. UPlasipala angala ukwamkela izimvo ezifike emva komhla wokwala. Nabani na ongakwazi ukufunda nokubhala angahambela kwiSebe leziCwangciso ngeDolophu apho igosa likamasipala liza kumnceda ukufaka izimvo zakhe ngokusemthethweni.</p> <p>DGI O'Neill UMLAWULI KAMASIPALA Masipala waseOverstrand P.O. Box 20 HERMANUS 7200</p> <p>Inothisi kaMasipala Nomb. 171/2022</p>



TALISMAN
Hire
HERMANUS
028 313 0144
8 Arum Road, Hermanus

**WHY BUY EQUIPMENT
— WHEN YOU —
CAN HIRE IT?**






Disposing of general waste in Overstrand

When and where to dispose of waste in the Overstrand:

HERMANUS
Hermanus transfer station off Mbeki Street (garden waste only): open weekdays from 08:00 – 18:00, Saturdays and public holidays from 09:00 – 14:00.
Hermanus drop-off off Schulphoek Road (builders' rubble and general waste): open weekdays from 08:00 – 18:00, Saturdays and public holidays from 09:00 – 14:00.
Drop-off of recyclables The Hermanus Waste Material Recovery Facility (MRF) in Schulphoek Road is open to businesses and households for the delivery of recyclable waste should they have larger volumes that they require to dispose of. Waste operating hours from 09:00 – 13:30.

Voëlkop Prawn Flats drop-off (garden and household waste): open weekdays from 08:00 – 17:30, Saturdays from 09:00 – 15:30 and public holidays from 09:00 – 13:30.
Hawston drop-off in Church Street (builders' rubble and general waste): open weekdays from 08:00 – 18:00, Saturdays 09:00 – 16:00 and public holidays from 09:00 – 14:00.

for acceptance of recyclable waste from the general public is between 08:00 and 17:00 from Monday to Thursday, 08:00 – 16:00 on a Friday and until 14:00 on public holidays that fall on a weekday. Closed on weekends.
 No household or garden waste will be accepted here. Household waste can be disposed of at the public drop-off next door and garden waste needs to be taken to the Hermanus Transfer Station site where it will be chipped and then sent to Karwyderskraal for composting.

HANGKLIP - KLEINMOND
Kleinmond transfer station off Overhills access road (builders' rubble, garden waste and general household waste): open weekdays from 07:30 – 18:00, Saturdays and Sundays 08:00 – 16:00 and public holidays from 08:00 – 16:00.
Betty's Bay garden waste drop-off (garden waste only): open Mondays to Sundays from 08:00 – 16:00 and public holidays from 08:00 – 16:00.
Betty's Bay weekend mini drop-off at the library (household waste, black bags only): open Mondays to Sundays from 08:00 – 16:00 and public holidays from 08:00 – 16:00.
Pringle Bay weekend mini drop-off (household waste, black bags only): open Mondays to Sundays from 08:00 – 16:00 and public holidays from 08:00 – 16:00.

GREATER GANSBAAI - STANFORD
The Gansbaai Landfill (builders' rubble, garden waste and general household waste): open weekdays from 08:00 – 18:00, Saturdays from 08:00 – 15:00 and public holidays from 08:00 – 15:00.
Stanford drop-off (garden and general waste as well as small quantities of builders' rubble): open weekdays from 08:00 – 18:00, Saturdays from 09:00 – 14:00 and public holidays from 09:00 – 14:00.
Pearly Beach drop-off: open Monday, Tuesday, Thursday and Friday from 08:00 – 17:00. Closed on Wednesdays. Open on Saturdays from 10:00 – 16:00, Sundays 13:00 – 17:00 and public holidays from 10:00 – 15:00.

VACANCY
ASK
interim technologies
HANDYMAN/PAYER
 Kleinmond, 7195, Western Cape
 Basic requirements:
 • Grade 12 or N3 technical qualification

VACANCY
ASK
interim technologies
ARMED RESPONSE OFFICER
 Kleinmond, 7195, Western Cape
 Basic requirements:
 • Grade 12 or N3 technical qualification

Wes-Kaapse Provinsiale Parlement
 Western Cape Provincial Parliament
 IPalamente yehPhondo leNishona Koloni

HAVE YOUR SAY
 SUBMISSIONS AND PUBLIC HEARINGS ON THE COPYRIGHT

VACANCY
ASK
interim technologies
HANDYMAN/PAYER
 Kleinmond, 7195, Western Cape
 Basic requirements:
 • Grade 12 or N3 technical qualification

VACANCY
ASK
interim technologies
ARMED RESPONSE OFFICER
 Kleinmond, 7195, Western Cape
 Basic requirements:
 • Grade 12 or N3 technical qualification

Wes-Kaapse Provinsiale Parlement
 Western Cape Provincial Parliament
 IPalamente yehPhondo leNishona Koloni

HAVE YOUR SAY
 SUBMISSIONS AND PUBLIC HEARINGS ON THE COPYRIGHT

VACANCY
ASK
interim technologies
HANDYMAN/PAYER
 Kleinmond, 7195, Western Cape
 Basic requirements:
 • Grade 12 or N3 technical qualification

VACANCY
ASK
interim technologies
ARMED RESPONSE OFFICER
 Kleinmond, 7195, Western Cape
 Basic requirements:
 • Grade 12 or N3 technical qualification

Wes-Kaapse Provinsiale Parlement
 Western Cape Provincial Parliament
 IPalamente yehPhondo leNishona Koloni

HAVE YOUR SAY
 SUBMISSIONS AND PUBLIC HEARINGS ON THE COPYRIGHT

VACANCY
ASK
interim technologies
HANDYMAN/PAYER
 Kleinmond, 7195, Western Cape
 Basic requirements:
 • Grade 12 or N3 technical qualification

VACANCY
ASK
interim technologies
ARMED RESPONSE OFFICER
 Kleinmond, 7195, Western Cape
 Basic requirements:
 • Grade 12 or N3 technical qualification

Wes-Kaapse Provinsiale Parlement
 Western Cape Provincial Parliament
 IPalamente yehPhondo leNishona Koloni

HAVE YOUR SAY
 SUBMISSIONS AND PUBLIC HEARINGS ON THE COPYRIGHT

9 408 7722

Facebook icon Instagram icon

MEDIAVERKLARING / PRESS RELEASE

#Overstrand4all

ISSUED BY:**Municipal Manager: Dean O'Neill**

Tel: 028 313 8003 | mm@overstrand.gov.za

Overstrand Municipality

**MEDIA ENQUIRIES:****Riana Steenekamp**

Tel: 028 313 8043 | rsteenekamp@overstrand.gov.za

EMBARGO: Immediate release**2 March 2023****HERMANUS PUBLIC DROP-OFF FACILITY NOW OPEN ON SUNDAYS**

From Sunday, 5 March 2023, Overstrand Municipality's public drop-off at the bottom of Schulphoek Road in Hermanus will be open on Sundays from 10:00 - 17:00 to function as a mini waste drop-off facility.

This is to accommodate people who are leaving the area on a Sunday, by providing them access to a facility to legally dispose of their household waste (max 4 bags or a 240lt bin) and recycled material that they generated in the week.

As in terms of the Integrated Waste Management By-Law, waste can only be placed on the pavement on the morning of their weekly collection.

No builder's rubble or garden waste will be accepted on Sundays.

END/EINDE



MEDIAVERKLARING / PRESS RELEASE

#Overstrand4all

ISSUED BY:**Municipal Manager: Dean O'Neill**

Tel: 028 313 8003 | mm@overstrand.gov.za

Overstrand Municipality

**MEDIA ENQUIRIES:****Riana Steenekamp**

Tel: 028 313 8043 | rsteenekamp@overstrand.gov.za

EMBARGO: Immediate release**8 March 2023****OVERSTRAND INTENSIFIES EFFORTS TO TACKLE IMPROPER DISPOSAL OF WASTE IN PEARLY BEACH**

Overstrand Municipality has intensified its drive against illegal dumping and improper disposal of waste.

Rubbish bags and wheelie bins that are left outside the gate on the sidewalks by weekenders and holiday visitors on days when refuse is not removed, are a huge problem everywhere.

Anyone caught leaving waste on the sidewalks on the night before scheduled removal days, will be reported to Law Enforcement to assist with the enforcement of the Integrated Waste Management By-law.

To make things as easy as possible for weekenders and/or holiday visitors each area has facilities within easy reach (and open over weekends) to dispose of household refuse in the correct manner before leaving the area.

For the convenience of the Pearly Beach and Eluxolweni residents, the Pearly Beach Drop-off facility accepts general household waste (such as clean recyclables and black bags) as well as clean garden waste.

Very small quantities of building rubble (less than a bakkie load) can also be disposed of here. As this is a small drop-off facility, it can only accept small vehicle loads e.g. a car with a trailer or a bakkie and there is a limit of two bakkie loads of rubble per household per day.

For the disposal of larger loads, residents should kindly make use of the Gansbaai landfill site.

The Pearly Beach Drop-off Operating times are as follows:

- Mondays, Tuesdays, Thursdays, Fridays: 08:00 to 17:00
- Wednesdays: Closed
- Saturdays: 10:00 to 15:00
- Sundays: 10:00 to 15:00
- Public Holidays: 10:00 to 15:00

END/EINDE

Panthera Africa bids farewell to Pema

Panthera Africa Big Cat Sanctuary near Stanford announced with great sadness the loss of their beautiful 18-year-old cheetah, Pema, at the beginning of March.

Pema, like her brother Jampa who passed away in 2019, had several health issues during her time at the sanctuary. With medication and an adjusted feeding schedule, the team was able to manage her severe arthritis and deteriorating kidneys for some time.

The graceful feline recently began showing signs of discomfort and veterinarian Dr Peter Caldwell was immediately called in. When he examined Pema it became clear that symptomatic treatment would no longer give her

the quality of life that she deserved, and the difficult decision was made to euthanise her.

Pema and Jampa were orphaned at an early age and after a period of hand-rearing, were surrendered to a rescue centre. The centre's hope of reintroducing them back into the wild was not successful and the cats remained there until the decision was made to move them to Panthera Africa, where they received the special care they required, especially as older cats. Pema (which means 'lotus flower') was very loving, and a real princess – elegant and precise.

Panthera Africa says that they are deeply grateful to have had five wonderful years with Pema since her arrival at the sanctuary, and that

they will forever treasure the memories of her powerful purrs and games of hide and seek. "Our dearest Pema, thank you for everything you have given us. We already miss you. Run free, beautiful Lotus Flower."

Panthera Africa wishes to thank everyone who adopted and donated towards Pema's care over the years, and should you wish to continue doing so in her honour they would be incredibly grateful (visit <https://pantherafrica.com/donate/>).

For more information on sanctuary visits and how you can get involved, follow them on Facebook or go to www.pantherafrica.com.

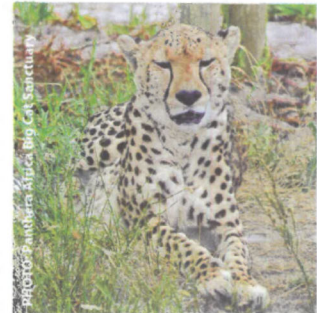


Photo: Panthera Africa Big Cat Sanctuary

Household waste drop-off open on Sundays

Overstrand Municipality's public disposal point for household waste will now be open on Sundays to function as a mini waste drop-off facility.

"This is to accommodate people who are leaving the area on a Sunday, by providing them access to a facility to legally dispose of their household waste (max 4 bags or a 240 litre bin) and recycled material that they generated in the week," explains Municipal Manager Dean O'Neill. He also reminds residents that no builder's rubble or garden waste will be accepted on Sundays.

In terms of the Integrated Waste Management Bylaw, waste can only be placed on the pavement on the morning of weekly collection.

The Waste Material Recovery Facility is situated in Schulphoek Road, next to the Water Treatment Works and Zwielih Primary School.

Operating hours for the acceptance of recyclable waste from the general public is between 08:00 and 17:00 from Monday to Friday, and can be left at the drop-off at the facility Saturdays from 09:00 to 16:00 and Sundays from 10:00 to 17:00.

Do's and Don'ts of Recycling

Recycling does not have to be difficult. It is important to know what we should and should not put in the recycling bags. Here are some simple tips:

- The golden rule when it comes to using your clear plastic bag is to ensure items are clean and dry. Black bags are for 'wet' waste, things that cannot be recycled.
- Please wrap broken glass in newspaper before placing it in bags or wheeled bins to prevent injury to workers. Wherever possible, such items should rather be recycled or disposed of at public drop-offs or transfer stations.
- Please don't put bags or wheeled bins out the day or night before removal. All refuse must be put out by 07:30 on waste collection day. No refuse bags may be left on pavements in baboon affected areas.



OVERSTRAND MUNICIPALITY
ERF 909, 1 PIKKEWYN STREET, VERMONT: APPLICATION FOR REMOVAL OF RESTRICTIVE TITLE DEED CONDITIONS, DEPARTURE AND DETERMINATION OF AN ADMINISTRATIVE PENALTY: PLAN ACTIVE TOWN AND REGIONAL PLANNERS (obo WJ SMART & J VIVIERS)

Notice is hereby given in terms of Sections 47 and 48 of the Overstrand Municipality Amendment By-Law on Municipal Land Use Planning, 2020 (By-Law), of the following applications applicable to Erf 909, Vermont (the property), namely:

Removal of Restrictive Title Deed Conditions
 Application in terms of Section 16(2)(f) of the By-Law for the removal of restrictive title deed conditions E(a) and E(d) as contained in Title Deed T41022/2014 of the property to accommodate the second dwelling, and to build structures over building lines.

Departure
 Application in terms of Section 16(2)(b) of the By-Law to:
 - relax the northern lateral building line from 2m to 0m to accommodate the existing covered patio
 - relax the northern lateral building line from 2m to 1.021m to accommodate the existing braai area
 - relax the eastern lateral building line from 2m to 0m to accommodate the existing braai area
 - relax the eastern lateral building line from 2m to 0m to accommodate the proposed carport

Determination of an Administrative Penalty
 Application in terms of the provisions of Section 16(2)(q) of the By-Law for the determination of an administrative penalty.

Details regarding the proposal are available for inspection during weekdays between 08:00 and 16:30 at the Department Town Planning at 16 Paterson Street, Hermanus.

Any comments must be in writing to reach the Municipality (16 Paterson Street, Hermanus / (f) 028 313 2093 / (e) loretta@overstrand.gov.za) on or before **14 April 2023**, quoting your name, address and contact details, interest in the application, and the reasons for comment. Telephonic enquiries can be made to the **Town Planner, Mr. H. Olivier** at 028 313 8900. The Municipality may refuse to accept comment received after the closing date. Any person who cannot read or write may visit the Town Planning Department where a municipal official will assist them in order to formalize their comments.

DGI O'Neill
MUNICIPAL MANAGER
 Overstrand Municipality
 P.O. Box 20
HERMANUS
 7200

Municipal Notice No. 51/2023

OVERSTRAND MUNISIPALITEIT
ERF 909, PIKKEWYN STRAAT, 1 VERMONT: AANSOEK OM OPHEFFING VAN BEPERKENDE TITELAKTEVOORWAARDES, AFWYKING EN BEPALING VAN 'N ADMINISTRATIEWE BOETE: PLAN ACTIVE TOWN AND REGIONAL PLANNERS (nms WJ SMART & J VIVIERS)

Kragtens Artikel 47 en 48 van die Overstrand Munisipaliteit Wysigingsverordening vir Munisipale Grondgebruikbeplanning, 2020 (Verordening) word hiermee kennis gegee van die onderstaande aansoek van toepassing op Erf 909, Vermont (die eiendom), naamlik:

Opheffing van Beperkende Titelaktevoorwaardes
 Aansoek ingevolge Artikel 16(2)(f) van die Verordening vir die opheffing van beperkende titelaktevoorwaardes E(a) en E(d) soos vervat in Titelakte T41022/2014 van die eiendom om ten einde 'n tweede woning te akkomodeer, en om strukture oor boulyne te bou.

Afwyking
 Aansoek ingevolge Artikel 16(2)(b) van die Verordening ten einde die:
 - noordelike laterale boulyn te verslap vanaf 2m na 0m om die bestaande onderdak stoep te akkomodeer;
 - noordelike laterale boulyn te verslap vanaf 2m na 1.021m om die bestaande braaiarea te akkomodeer;
 - oostelike laterale boulyn te verslap vanaf 2m na 0m om die bestaande braaiarea te akkomodeer
 - oostelike laterale boulyn te verslap vanaf 2m na 0m om die voorgestelde motorafdak te akkomodeer

Bepaling van 'n Administratiewe Boete
 Aansoek ingevolge die bepalings van Artikel 16(2)(q) van die Verordening vir die bepaling van 'n administratiewe boete.

Besonderhede aangaande die voorstel lê ter insae gedurende weksdae tussen 08:00 en 16:30 by die Departement: Stadsbeplanning te Patersonstraat 16, Hermanus.

Enige kommentare moet skriftelik wees en die Munisipaliteit (Patersonstraat 16, Hermanus / (f) 028 313 2093 / (e) loretta@overstrand.gov.za) bereik voor of op **14 April 2023**, met u naam, adres en kontakbesonderhede, belang in die aansoek, en die redes vir kommentaar. Telefoniese navrae kan gerig word aan die **Stadsbeplanner, Mnr. H. Olivier** by 028 313 8900. Die Munisipaliteit mag weier om kommentare te aanvaar na die sluitingsdatum. Enige persoon wat nie kan lees of skryf nie kan die Departement Stadsbeplanning besoek waar hul deur 'n munisipale amptenaar bygestaan sal word om hul kommentare te formuleer.

DGI O'Neill
MUNISIPALE BESTUURDER
 Overstrand Munisipaliteit
 Posbus 20
HERMANUS
 7200

Munisipale Kennisgewing Nr. 51/2023

UMASIPALA WASE-OVERSTRAND
ISIZA ESINGU-ERF 909, 1 PIKKEWYN STREET, VERMONT: ISICELO SOKUSHENXISWA KWEMEKO EZIYIMIQOBO, UKWAHLULA NOKUMISELA IPENALTHI YOBHALISO: PLAN ACTIVE TOWN AND REGIONAL PLANNERS (egameni lileka WJ SMART & J VIVIERS)

Kukhutshwe isaziso esimayela nemiba yeSoloty lama47 nelama48 nguMasipala waseOverstrand isaziso esimayela noMthethwana OngeZicwanciso Zokusetyenziswa koMhlaba kaMasipala ku2020 (Umthethwana), ongokulandela kwecizelo zemithetho esebenza kwisiza esingu-Erf 909, Vermont (isakhiwo/umhlaba), esibizwa:

Ushenxiswa Lweemeko Eziyimiqobo
 Isicelo esimayela nokusetyenziswa kweSoloty le16(2)(f) loMthethwana ongokushenxiswa kweemeko eziyimiqobo kwiitayitile zobunini E(a) no E(d) njengoko ziqulethwe kwiTayitile yoBunini T41022/2014 yomhlaba wesakhiwo ukulungiselela indawo yesibini yokuhlala abantu, nokwakha izakhiwo/zindlu phezu kwemigca yokwakha.

Ukwahluka
 Isicelo esimayela nemiba yeSoloty le16(2)(b) loMthethwana elingo:
 - kunyenyisa umgca osemantda wesakhiwo omelene nomgca wesakhiwo nozimitha ezisuka kwi-2m ukuya ku-0m ukulungiselela iphethiyo (iveranda) esele ikhona
 - ukunyenyisa umgca osemantda wesakhiwo omelene nomgca wesakhiwo ukusuka kwimitha ezi-2m ukuya ku-1.021m ukulungiselela indawo yokubhaya/yokoja inyama esele ikhona
 - ukunyenyisa umgca okwicala elisempuma omelene nomgca wesakhiwo ukusuka kwimitha ezi-2m ukuya ku-0m ukulungiselela indawo yokubhaya/yokoja inyama esele ikhona
 - ukunyenyisa umgca wesakhiwo okwicala elisempuma omelene nomgca wesakhiwo ukusuka kwimitha ezi-2m ukuya ku0m ukulungiselela ikhopot

Ingqikelelo yePenalithi/umdlivo wobhaliso
 Isicelo esimayela nemiba yezibonelelo zeSoloty le-16(2)(q) loMthethwana wokuqikelela nokumiselela umdlivo/penalithi.

linkekukacha ezipheleleyo mayela nesi siphakamiso ziyafumaneka phakathi kwentsimbi ye08:00 neye16:30 kwiSebeLezicwanciso zeDolophu kwa16 Paterson Street, Hermanus.

Naziphi na izimvo ezibhalweyo mazifike kwaMasipala (16 Paterson Street, Hermanus / (f) 028 313 2093 / (e) loretta@overstrand.gov.za) ongomhlaba okanye ngaphambi komhla wama-14 kuEpriil 2023, uchaze igama lakho, idilesi neenkukacha ofumaneka kuzo, umdla wakho kwesi sicelo, nezizathu zokuhlomla. Imbizvo ngefowuni ingathunyelwa ku**Mwangcisi weDolophu, Mnu. H. Olivier** kwa028-313 8900. UMasipala angala ukwamkela izimvo ezifike emva komhla wokuvula. Nabani na ongakwazi ukubhala nokufunda angahambela kwiSebe Lezicwanciso zeDolophu apha igosa likamasipala liza kumnceda ahlonke gokusethethweni.

DGI O'Neill
UMLAWULI KAMASIPALA
 Masipala waseOverstrand
 P.O. Box 20
HERMANUS
 7200

Inothisi kaMasipala Nomb. 51/2023

#overstrand4all



MEDIAVERKLARING / PRESS RELEASE

#Overstrand4all

ISSUED BY:**Municipal Manager: Dean O'Neill**

Tel: 028 313 8003 | mm@overstrand.gov.za

Overstrand Municipality

**MEDIA ENQUIRIES:****Riana Steenekamp**

Tel: 028 313 8043 | rsteenekamp@overstrand.gov.za

EMBARGO: Immediate release**18 April 2023****OVERSTRAND WASTE MANAGEMENT FACILITIES - Let's work together to stop illegal dumping**

Illegal dumping is becoming an increasingly tough challenge to deal with in the Overstrand Municipal area and we appeal to residents to take their refuse directly to the transfer station or drop-off near them to dispose of it in the correct place and manner.

Not only is it an eyesore, but it also pushes up municipal cleaning costs.

Let us cultivate a desire to keep our towns and region clean and not dump rubbish where it is unsightly and illegal, by following the points below:

- Place your household waste in wheelie bins/black bags and put it outside on scheduled collection days only.
- Clean garden waste should please be delivered to either the Gansbaai landfill site, Betty's Bay garden waste site or Hermanus and Kleinmond Transfer Stations or the Stanford and Pearly Beach public drop off sites.
- Do not dump rubbish bags, old furniture or household appliances next to roads or on open erven.

This is where and when the public can dispose of general waste in the Overstrand.

GREATER HERMANUS ADMINISTRATION:

HERMANUS transfer station off Mbeki Street (garden waste only) - open weekdays from 08:00 till 18:00, Saturdays 09:00 to 16:00 and public holidays 09:00 to 14:00.

HERMANUS public drop-off at the bottom of Schulphoek Road (builders' rubble and general waste) - open weekdays from 08:00 till 18:00, Saturdays 09:00 to 16:00 and public holidays 09:00 to 14:00. In addition, the site is operated as a mini drop off for people leaving the area on a Sunday from 10:00 to 17:00 and will only accept small quantities of general waste (max 4 bags) no builders rubble or garden waste per client.

VOËLKLIP Weekend Mini drop-off in 7th Street (household waste, black bags only) - open weekdays from 08:00 till 17:30, Saturdays from 09:00 to 15:30, Sundays 10:00 to 16:30 and public holidays 09:00 to 13:30.

VOËLKLIP PRAWN FLAT drop-off (garden and household waste) - open weekdays from 08:00 till 17:30, Saturdays from 09:00 to 15:30 and public holidays 09:00 to 13:30.

HAWSTON drop-off in Church Street (builders' rubble and general waste) - open weekdays from 08:00 till 18:00, Saturdays 09:00 to 16:00, Sundays 10:00 to 17:00 and public holidays 09:00 to 14:00.

Recyclables

The Hermanus Waste Material Recovery Facility (MRF) in Schulphoek Road is open to businesses and households for the delivery of recyclable waste should they have larger volumes that they require to dispose of.

Waste operating hours for acceptance of recyclable waste from the general public is between 08:00 and 17:00 from Monday to Thursdays, 08:00 till 16:00 on a Friday and until 14:00 on public holidays that fall on a weekday. Closed on weekends.

No household or garden waste will be accepted here. Household waste can be disposed of at the public drop-off next door and garden waste needs to be taken to the Hermanus Transfer Station site where it will be chipped and then sent to Karwyderskraal for composting.

HANGKLIP-KLEINMOND ADMINISTRATION:

KLEINMOND transfer station off Overhills access road (builders' rubble, garden waste and general household waste) is open weekdays from 07:30 - 18:00, Saturdays and Sundays 08:00 to 16:00 and public holidays 08:00 to 16:00.

BETTY'S BAY garden waste drop-off (garden waste only) is open Mondays to Sundays and from 08:00 - 16:00 and public holidays from 08:00 - 16:00.

BETTY'S BAY weekend mini drop-off at the library (household waste, black bags & recycling only) is open Mondays to Sundays from 08:00 - 16:00 and public holidays from 08:00 - 16:00.

PRINGLE BAY weekend mini drop-off (household waste, black bags & recycling only) is open Mondays to Sundays from 08:00 - 16:00 and public holidays from 08:00 - 16:00.

GREATER GANSBAAI - STANFORD ADMINISTRATION

The GANSBAAI LANDFILL (builder's rubble, garden waste and general household waste) - open weekdays from 08:00 till 18:00, Saturdays from 08:00 to 15:00 and public holidays from 08:00 to 15:00.

STANFORD drop-off (garden and general waste as well as small quantities of builders' rubble) is open weekdays from 08:00 till 18:00 and Saturdays from 09:00 to 14:00 and public holidays from 09:00 to 14:00.

PEARLY BEACH Drop-Off is open Monday, Tuesday, Thursday, Friday from 08:00 till 17:00. Closed on Wednesdays. Open on Saturdays, Sundays and public holidays from 10:00 to 15:00.

END/EINDE

STOP ILLEGAL DUMPING



- ▶ **SEE IT**
- ▶ **REPORT IT**
- ▶ **STOP IT**

Overstrand Law Enforcement

028 313 8996

MEDIAVERKLARING / PRESS RELEASE

#Overstrand4all

ISSUED BY:

Municipal Manager: Dean O'Neill
Tel: 028 313 8003 | mm@overstrand.gov.za
Overstrand Municipality

MEDIA ENQUIRIES:

Riana Steenekamp
Tel: 028 313 8043 | rsteenekamp@overstrand.gov.za

**EMBARGO: Immediate release****10 May 2023****JOIN HANDS IN KEEPING OVERSTRAND'S STREETS CLEAN**

Overstrand Municipality has an active recycling programme, but it has become apparent that not everyone in the Overstrand is aware of the refuse collection schedule. Rubbish bags are often placed on the sidewalk for days before they are collected on the scheduled collection date.

The municipal solid waste team work to a set schedule and service different areas on different days of the week, picking up household waste and clean recyclables.

The recycle bags are collected on the same day as the general waste is collected and is then transported to the recycling plant where it is sorted and baled. For every clear plastic bag placed out by a household, a new one will be supplied as replacement.

The golden rule when it comes to using your clear plastic bag is to ensure items are clean and dry. Black bags are for 'wet' waste, things that cannot be recycled.

If you are letting your property, please be sure to bring all arrangements regarding the treatment of household waste to your tenants' attention.

In the case of weekenders, please make arrangements to ensure that your waste is presented as required on the scheduled waste collection day, or make use of one of the drop offs that are available.

If the weekenders who made use of your next-door neighbour's holiday home leave their refuse on the sidewalk when they pack up and depart at six o'clock on a Sunday evening, they - and by inference - the owner are breaking the Overstrand's by-law on Integrated Waste Management.

For your convenience, the transfer stations and public drop-offs are open as per below attached schedule.


Remember, all bins used in problem animal and baboon-affected areas should be animal/baboon-proof and securely closed at all times to prevent animals gaining access to the waste.

No refuse (black) bags may be left on pavements or on top of or outside bins in problem animal and baboon affected areas.

If you happen to live in a declared problem animal area and your neighbour has not yet gone to the trouble to obtain an animal-proof waste-disposal container from the municipality, he/she is breaking the law.

The declared problem animal areas are Kleinmond (including Arabella), Betty's Bay, Rooiels, Pringle Bay, portion of Onrus, Voëlklip, Fernkloof (including the Golf Estate), Hermanus Heights, Eastcliff, Kwaiwater and a portion of Hawston.

END/EINDE

 OVERSTRAND WASTE MANAGEMENT FACILITIES <small>#overstrand4all</small>		
THIS IS WHERE AND WHEN THE PUBLIC CAN DISPOSE OF HOUSEHOLD WASTE		
GANSBAAI-STANFORD ADMINISTRATION		
GANSBAAI LANDFILL SITE	Mondays - Fridays	08:00 - 18:00
	Saturdays	08:00 - 15:00
	Sundays	Closed
	Public holidays	08:00 - 15:00
STANFORD DROP-OFF	Mondays - Fridays	08:00 - 18:00
	Saturdays	09:00 - 14:00
	Sundays	Closed
	Public holidays	09:00 - 14:00
PEARLY BEACH DROP-OFF	Mondays, Tuesdays, Thursdays & Fridays	08:00 - 17:00
	Wednesdays	Closed
	Saturdays, Sundays & Public holidays	10:00 - 15:00
GREATER HERMANUS ADMINISTRATION		
HERMANUS TRANSFER STATION (GARDEN WASTE ONLY)	Mondays - Fridays	08:00 - 18:00
	Saturdays	09:00 - 16:00
	Sundays	Closed
	Public holidays	09:00 - 14:00
HERMANUS DROP-OFF	Mondays - Fridays	08:00 - 18:00
	Saturdays	09:00 - 16:00
	Sundays (as mini drop-off only)	10:00 - 17:00
	Public holidays	09:00 - 14:00
VOËLKLIP PRAWN FLATS DROP-OFF	Mondays - Fridays	08:00 - 17:30
	Saturdays	09:00 - 15:30
	Sundays	Closed
	Public holidays	09:00 - 13:30
VOËLKLIP MINI DROP-OFF	Mondays - Fridays	08:00 - 17:30
	Saturdays	09:00 - 15:30
	Sundays	10:00 - 16:30
	Public holidays	09:00 - 13:30
HAWSTON DROP-OFF	Mondays - Fridays	08:00 - 18:00
	Saturdays	09:00 - 16:00
	Sundays	10:00 - 17:00
	Public holidays	09:00 - 14:00
HANGKLIP-KLEINMOND ADMINISTRATION		
KLEINMOND TRANSFER STATION	Mondays - Fridays	07:30 - 18:00
	Saturdays & Sundays	08:00 - 16:00
	Public holidays	08:00 - 16:00
BETTY'S BAY GARDEN WASTE DROP-OFF	Mondays - Sundays	08:00 - 16:00
	Public holidays	08:00 - 16:00
BETTY'S BAY MINI DROP-OFF AT LIBRARY	Mondays - Sundays	08:00 - 16:00
	Public holidays	08:00 - 16:00
PRINGLE BAY MINI DROP-OFF	Mondays - Sundays	08:00 - 16:00

MEDIAVERKLARING / PRESS RELEASE

#Overstrand4all

ISSUED BY:**Municipal Manager: Dean O'Neill**

Tel: 028 313 8003 | mm@overstrand.gov.za

Overstrand Municipality

**MEDIA ENQUIRIES:****Riana Steenekamp**

Tel: 028 313 8043 | rsteenekamp@overstrand.gov.za

EMBARGO: Immediate release**28 June 2023****Baboon awareness is everything: Secure your refuse**

All households in baboon affected areas of the Overstrand must have an animal proof bin for domestic waste.

Overstrand Municipality can't win the battle of effective waste management on its own, so it is imperative that everyone co-operates by using "baboon proof bins".

According to the municipal Solid Waste by-law, non-compliant residents living in baboon affected areas can be fined up to R 1500 after an official notice has been served.

The declared problem animal areas are Kleinmond (including Arabella), Betty's Bay, Rooiels, Pringle Bay, portion of Onrus, Voëlklip, Fernkloof (including the Golf Estate), Hermanus Heights, Eastcliff, Kwaiwater and a portion of Hawston.

Law enforcement officers will be following up on waste collection days to remind households who do not have an animal proof container to rectify this situation as soon as possible.

If you are aware of weekenders in the Kwaiwater/Voëlklip area who have placed their refuse on pavements before refuse collection day, please direct them to the refuse drop-off facility at Voëlklip.

END/EINDE



1 November 2022

Project Report:

Waste Management: Puppet shows Grade R-3

Description:		
Dates:	18/19/20/24/25/26/27 October 2022	
Number of learners:	1897 (12 shows)	
Theme:	Waste Management	
Languages:	Afrikaans, English, and isiXhosa	
Area:	Gansbaai, Stanford, Hawston, Hermanus, Kleinmond	

In October 2022 Story Team completed an educational theatre programme for the Overstrand Municipality, focussing on Waste Management and Recycling, grades R -3 (Puppet show).

The Team visited schools in Gansbaai, Stanford, Kleinmond, Hawston and Hermanus. Our main aim was to involve learners in the learning process. Encouraging them to become responsible adults and warriors for our environment. We want them to play with us, participate with our characters and empower themselves to make better decisions for the future. Learners were confronted with decision-making challenges, encouraging participation through their reactions and answers to characters. Involving them to solve problems that the characters experienced on stage. This involvement emphasised our message of the impact of waste on our environment, the impact thereof on living creatures in nature and the terrible consequences of bad choices.

Learner participated with great enthusiastic; singing, using their 'magic spell' and teaching our antagonist a lesson or two.

The programme reached One-thousand eight hundred and ninety-seven learners.

A Rin-tin-tin class activity (attached) was emailed to participating schools to encourage post-production participation.

Five actors (One senior actor, two actors and two junior actors) from the community of the Overstrand were employed for this programme.

We believe that the theatre is a powerful tool to create communication between communities, building opportunities for future collaboration and participation in the conservation of our environment.

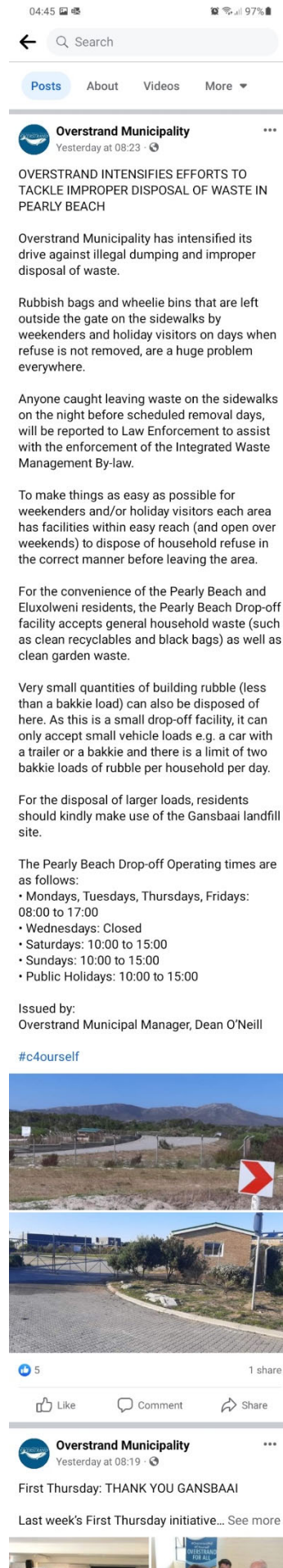
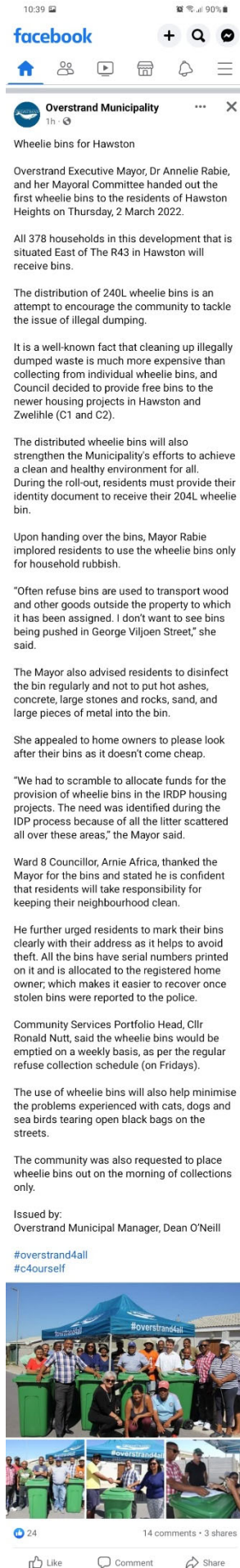
Thank you for the opportunity to educate the young generation of our district.

Celeste, Anette, and THE TEAM

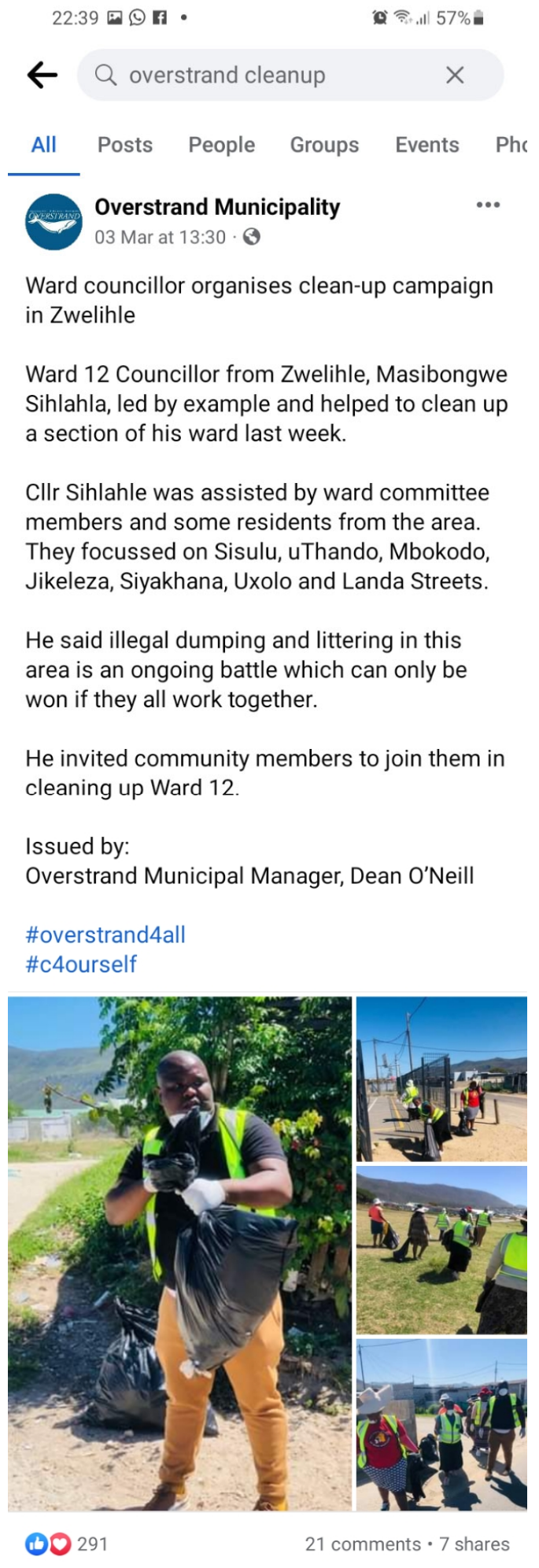
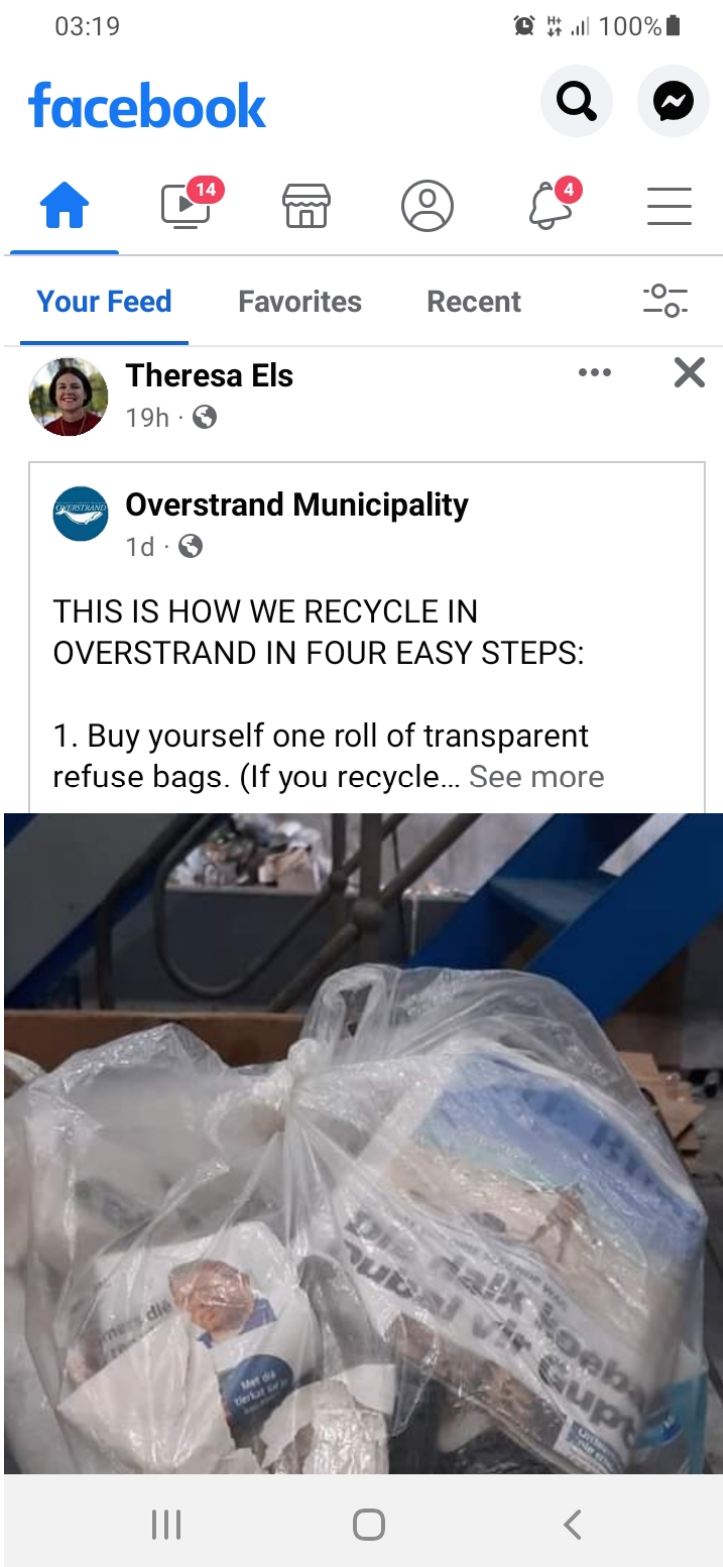
storifactori@storyteam.co.za	STORYTEAM (PTY) Ltd
www.storyteam.co.za	2014/240407















JOIN HANDS IN KEEPING OVERSTRAND'S STREETS CLEAN

Overstrand Municipality has an active recycling programme, but it has become apparent that not everyone in the Overstrand is aware of the refuse collection schedule. Rubbish bags are often placed on the sidewalk for days before they are collected on the scheduled collection date.

The municipal solid waste team work to a set schedule and service different areas on different days of the week, picking up household waste and clean recyclables.

The recycle bags are collected on the same day as the general waste is collected and is then transported to the recycling plant where it is sorted and baled. For every clear plastic bag placed out by a household, a new one will be supplied as replacement.

The golden rule when it comes to using your clear plastic bag is to ensure items are clean and dry. Black bags are for 'wet' waste, things that cannot be recycled.

If you are letting your property, please be sure to bring all arrangements regarding the treatment of household waste to your tenants' attention.

In the case of weekenders, please make arrangements to ensure that your waste is presented as required on the scheduled waste collection day, or make use of one of the drop offs that are available.

If the weekenders who made use of your next-door neighbour's holiday home leave their refuse on the sidewalk when they pack up and depart at six o'clock on a Sunday evening, they - and by inference - the owner are breaking the Overstrand's by-law on Integrated Waste Management.

For your convenience, the transfer stations and public drop-offs are open as per below attached schedule.

Remember, all bins used in problem animal and baboon-affected areas should be animal/baboon-proof and securely closed at all times to prevent animals gaining access to the waste.

No refuse (black) bags may be left on pavements or on top of or outside bins in problem animal and baboon affected areas.

If you happen to live in a declared problem animal area and your neighbour has not yet gone to the trouble to obtain an animal-proof waste-disposal container from the municipality, he/she is breaking the law.

The declared problem animal areas are Kleinmond (including Arabella), Betty's Bay, Rooiels, Pringle Bay, portion of Onrus, Voëlklip, Fernkloof (including the Golf Estate), Hermanus Heights, Eastcliff, Kwaiwater and a portion of Hawston.

Issued by:
Overstrand Municipal Manager, Dean O'Neill

#overstrand4all
#c4ourself

Marietjie Harmse and 11 others
10 shares