

# OVERSTRAND MUNICIPALITY



## INTEGRATED WASTE MANAGEMENT PLAN: *Annual Report (1 July 2021 – 30 June 2022)*

**COMPILED BY:**

**JPCE**

**(Specialist Consulting Engineers)**

**DECEMBER 2022**

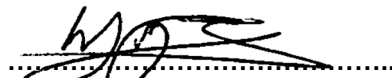
## REPORT: INTEGRATED WASTE MANAGEMENT PLAN: Annual Report (1 July 2021 – 30 June 2022)

JPCE Project Number: A128

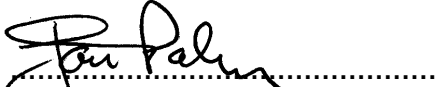
### COMPILED FOR:

Overstrand Municipality  
P O Box 20  
HERMANUS  
7200

### COMPILED BY:

  
.....  
**W. Meyers B. Eng.**  
Engineer  
e-mail: william@jpce.co.za

### REVIEWED BY:

  
.....  
**JG Palm Pr. Eng.**  
Director  
e-mail: janpalm@jpce.co.za

### **JPCE (PTY) LTD**

P O Box 931  
Brackenfell  
7561

e-mail: info@jpce.co.za  
Tel: +27 (0) 21 982 6570  
Fax: +27 (0) 21 981 0868

### COPIES ISSUED TO:

DEPARTMENT/COMPANY	ATTENTION (Name)	COPY NO.	DATE ISSUED	AUTHORISED BY
OVERSTRAND MUNICIPALITY P O BOX 20 HERMANUS 7200	Mr C Mitchell	1	12/2022	JG PALM
JPCE (PTY) LTD P O Box 931 BRACKENFELL 7561	Project File	2	12/2022	JG PALM

### **COPYRIGHT**

Copyright of the above said report vests in the **JPCE (Pty) Ltd** unless otherwise agreed to in writing. The said report or parts thereof may not be reproduced or transmitted in any form or by any means mechanically or electronically whatsoever without the written permission of the copyright holder.

**OVERSTRAND MUNICIPALITY****INTEGRATED WASTE MANAGEMENT PLAN: ANNUAL REPORT****CONTENTS**

	<b>Page</b>
<b>1. INTRODUCTION.....</b>	<b>1</b>
1.1 BACKGROUND.....	1
<b>2. OVERSTRAND IWMP .....</b>	<b>1</b>
2.1 GOALS AND IMPLEMENTATION ITEMS SUMMARY .....	1
<b>3. 1 JULY 2021 TO 30 JUNE 2022 EVALUATION.....</b>	<b>2</b>
3.1 GOALS AND IMPLEMENTATION FOR ASSESSMENT PERIOD .....	3
<b>4. ADDITIONAL PROJECT INFORMATION .....</b>	<b>6</b>
4.1 AWARENESS AND EDUCATION.....	6
4.2 WASTE INFORMATION MANAGEMENT & ENSURE WASTE MINIMISATION .....	7
4.3 EFFECTIVE SOLID WASTE SERVICE DELIVERY & SAFE MANAGEMENT OF HAZARDOUS WASTE .....	8
4.4 IMPROVE REGULATORY COMPLIANCE .....	8
4.5 BUDGETING .....	9
4.6 SOLID WASTE EXPENDITURE DURING EVALUATION PERIOD .....	9
4.7 IWMP REVIEW AND UPDATE .....	10
<b>5. CONCLUSIONS AND RECOMMENDATIONS.....</b>	<b>10</b>

**ANNEXURES**

ANNEXURE 1: AWARENESS AND EDUCATION EXAMPLES

# OVERSTRAND MUNICIPALITY

## INTEGRATED WASTE MANAGEMENT PLAN: ANNUAL REPORT

### 1. INTRODUCTION

#### 1.1 BACKGROUND

This report is a requirement as part of the Integrated Waste Management Plan (IWMP) monitoring and review process as well as being a requirement of the Waste Act to be submitted. The purpose is to determine whether the action plans and implementation items contained in the IWMP are being implemented and if not, what the planning is regarding these. Evaluating the above will provide insight into the extent to which the IWMP has been implemented during the evaluation period, the levels of compliance and if the IWMP is still useful in terms of its goals or if it should be updated.

The evaluation period for this report is from 1 July 2021 to 30 June 2022. The Overstrand IWMP dated May 2020 was used for the evaluation.

### 2. OVERSTRAND IWMP

#### 2.1 GOALS AND IMPLEMENTATION ITEMS SUMMARY

The following goals and implementation items were included in the 2020 IWMP:

<b>Goal 1:</b>	<b>Strengthened education, capacity and advocacy towards Integrated Waste Management</b>
Strategic Objective 1:	Facilitate consumer and industry responsibility in integrated waste management
Strategic Objective 2:	Promote and ensure awareness and education of integrated waste management
Strategic Objective 3:	Build and strengthen waste management capacity
<b>Goal 2:</b>	<b>Improved integrated waste management planning and implementation for efficient waste services and infrastructure</b>
Strategic Objective 1:	Facilitate municipal waste management planning
Strategic Objective 2:	Promote industry waste management planning
Strategic Objective 3:	Promote the establishment of integrated waste management infrastructure and services
Strategic Objective 4:	Ensure effective and efficient waste information management
<b>Goal 3:</b>	<b>Effective and efficient utilisation of resources</b>
Strategic Objective 1:	Minimise the consumption of natural resources
Strategic Objective 2:	Stimulate job creation within the waste economy
Strategic Objective 3:	Increase waste diversion through reuse, recovery and recycling
<b>Goal 4:</b>	<b>Improved compliance with environmental regulatory framework</b>
Strategic Objective 1:	Strengthen compliance monitoring and enforcement
Strategic Objective 2:	Remediate and rehabilitate contaminated land
Strategic Objective 3:	Facilitate the development of waste policy instruments
Strategic Objective 4:	Promote self/co-regulatory measures

**3. 1 JULY 2021 TO 30 JUNE 2022 EVALUATION**

As per the Waste Act, this report must evaluate the implementation of the IWMP in terms of the following:

- a) the extent to which the plan has been implemented during the period;
- b) the waste management initiatives that have been undertaken during the reporting period;
- c) the delivery of waste management services and measures taken to secure the efficient delivery of waste management services, if applicable;
- d) the level of compliance with the plan and any applicable waste management standards;
- e) the measures taken to secure compliance with waste management standards;
- f) the waste management monitoring activities;
- g) the actual budget expended on implementing the plan;
- h) the measures that have been taken to make any necessary amendments to the plan;
- i) in the case of a province, the extent to which municipalities comply with the plan and, in the event of any non-compliance with the plan, the reasons for such non-compliance: and
- j) any other requirements as may be prescribed by the Minister.

To reflect the required information, the extent to which action items and goals listed above were implemented are described below:

**3.1 GOALS AND IMPLEMENTATION FOR ASSESSMENT PERIOD**

Goals and implementation items (2020 IWMP)			2021/2022	Future planning / Comments
Goal 1: Strengthened education, capacity and advocacy towards Integrated Waste Management			Implemented? (1 = yes, 0 = no)	
Strategic Objective 1:	Facilitate consumer and industry responsibility in integrated waste management	The Manager: Solid Waste Planning must address and co-ordinate the requirements of awareness and general waste management either by himself or an appointed person. This person will co-ordinate and/or delegate the follow-up visits to the special and hazardous waste generators in the Overstrand municipality to ensure that all these generators are aware of applicable legislation and are following steps to become compliant if required. This person will also oversee the information gathering as per legislation, in other words, ensure that generators and transporters report to the municipality as required. General public awareness and feedback on recycling issues and information will also fall under the duties of this person, including maintaining and improving upon the diversion statistics information provided to the public. Continue to support the educational Puppet Show & Theatre.	0.5	Refer to additional information for public awareness. Further implementation to continue. Engagement with special and hazardous waste generators delayed.
Strategic Objective 2:	Promote and ensure awareness and education of integrated waste management			
Strategic Objective 3:	Build and strengthen waste management capacity	<p>Fill all vacant posts as soon as possible.</p> <p>Municipal solid waste employees to attend education seminars and waste forums as is appropriate for their specific responsibility levels. Capacity training and education must be conducted within the municipality where needed. It must be ensured that the solid waste management employees are informed regarding the latest legislation and how to appropriately handle and identify various waste types. Law enforcement departments must also be approached and receive education in solid waste legislation and management to enable them to identify issues and act when required.</p> <p>The South African Institute of Waste Management (<a href="http://www.iwmsa.co.za">www.iwmsa.co.za</a>) is a voluntary organization that provides training on the management of waste. The Overstrand Municipality is encouraged to have their staff become members of this institute and to attend the training sessions that is available on their website.</p> <p>The Waste Management Officer attends the Overberg Provincial Waste Forum, The Western Cape Recycling Action Group as well as District Forums.</p>	1	Mr Mitchell attends forums, seminars and gave presentations as well. Presentation given on recycling at a municipal ward forum. Presentation given to the Bitou Municipality during a visit from them in February 2022 to see how recycling in the Overstrand is done. The Provincial waste forum is attended regularly.

Goals and implementation items (2020 IWMP)			2021/2022	Future planning / Comments
<b>Goal 2: Improved integrated waste management planning and implementation for efficient waste services and infrastructure</b>				
Strategic Objective 1:	Facilitate municipal waste management planning	Review IWMP and submit IWMP annual report along with implementation projects update.	1	Completed annually
Strategic Objective 2:	Promote industry waste management planning	This objective is coupled with Goal 1, where the appointed persons will liaise with industry to ensure that they are aware of the relevant legislation. Follow-up meetings and on-going communication will ensure that industry sufficiently plans and implements actions in order to be compliant and reduce waste generation along with responsible handling/treatment/transport/disposal.	N/A	Implementation for upcoming years.
Strategic Objective 3:	Promote the establishment of integrated waste management infrastructure and services	Construction of a new MRF, drop-off and garden waste chipping facility for Hermanus.	1	Construction has been completed. Contractor to finish repairing snags identified.
Strategic Objective 4:	Ensure effective and efficient waste information management	Improve the detail with which the waste characterisation study is done. The study should include sub-categories for the current included waste types in order for refined planning and diversion option identification. Continue recording at weighbridges and reporting to IPWIS by the Waste Management Officer.	1	Initial results included in the 2020 IWMP. The study continues to collect new data. IPWIS data is submitted monthly.
<b>Goal 3: Effective and efficient utilisation of resources</b>				
Strategic Objective 1:	Minimise the consumption of natural resources	This also ties in with Goal 1 to promote waste minimisation and recycling, which will in turn reduce pressure on natural resources by re-using materials efficiently. New facility designs must take cognisance of natural resource protection. For example, a rehabilitated disposal site must be covered with indigenous vegetation suited to the climate so as not to require additional watering to thrive. Awareness and education should place additional focus on waste avoidance, reducing the need for diversion methods and disposal.	1	The new Hermanus MRF was constructed and is under operation to boost recycling. The Hawston Landfill remove & remediate operation is completed and covered in natural vegetation. Education is largely focussed on diversion information.
Strategic Objective 2:	Stimulate job creation within the waste economy	Appoint contractor(s) for MRF operations at the new Hermanus MRF.	1	The contractor has been appointed via public tender and MRF operations are currently under way.
Strategic Objective 3:	Increase waste diversion through reuse, recovery and recycling	Same as previous.	1	See above

Goals and implementation items (2020 IWMP)			2021/2022	Future planning / Comments
<b>Goal 4: Improved compliance with environmental regulatory framework</b>				
Strategic Objective 1:	Strengthen compliance monitoring and enforcement	Conduct internal and external compliance audits at all waste management facilities as required according to licences and legislation. Findings must be communicated to the DEADP.	1	All operational facilities as well as closed facilities received the required external audits as well as internal audits. These audit reports were submitted to the DEADP within the required timeframes. This item's implementation continues annually.
Strategic Objective 2:	Remediate and rehabilitate contaminated land	Conclude investigation to verify that all waste has been removed at the Pearly Beach Landfill.	1	Process under way and extended to upcoming implementation period in order to conclude discussions and actions with the DEADP following additional site investigations and meetings.
Strategic Objective 3:	Facilitate the development of waste policy instruments	Scheduled item completed in previous year.	N/A	Scheduled item completed in previous year.
Strategic Objective 4:	Promote self/co-regulatory measures	Ties in with Goal 1. Person responsible to liaise with industry should promote the implementation of these measure e.g. through reviewing industry waste management plans. Ensure annual IWMP review and reporting.	1	Refer to Goal 1. IWMP annual report submitted annually.
<b>IWMP implementation % (2021-2022)</b>			<b>95%</b>	

## 4. ADDITIONAL PROJECT INFORMATION

### 4.1 AWARENESS AND EDUCATION

The Overstrand Municipality conducts comprehensive awareness and education campaigns with continual involvement with the public in terms of solid waste management and the promotion of better waste management practices. Residents are informed and given feedback through the means of newsletters, pamphlets, social media and the municipal website. Schools are visited to educate learners about solid waste and recycling.

The following summarised examples indicate the latest actions. Further details are attached as **Annexure 1**, which is a small sample of the numerous public education and engagements. More examples are available at the waste manager's office.

- Storyteam Storifactori: This is a team conducting an educational theatre project in collaboration with the Overstrand Municipality. They visit schools and community centres throughout Overstrand and perform environmentally themed puppet theatre productions with an interactive nature to teach learners about the importance of nature conservation and proper waste management and recycling. Their target audience is from grade R to grade 7. Productions are presented in Afrikaans, English and isiXhosa.
- Newspapers: For example, "Village News" and "Gansbaai Courant". Solid Waste project articles and advertisements for public participation. Useful waste management and recycling information.
- Press releases, website and pamphlets: Waste transportation information and available solid waste facility information. Solid waste projects progress reports. Recycling information.
- Information pamphlets: Discouraging illegal dumping and information regarding collection days for weekenders. Information on managing waste in baboon-active areas.
- Municipal newsletter ("BULLETIN"): Solid waste events and information.
- Social Media: Announcements, public interaction, useful information.
- Forums & Seminars: Mr Mitchell presented at events, for example at the public forums where a recycling presentation was given to the municipal wards. Presentation given to the Bitou Municipality during a visit from them in February 2022 to see how recycling in the Overstrand is done.

The Overstrand should continue with their awareness and education campaign which contributes to the Municipality's successful waste management practices and public support and involvement. This is also included as an ongoing action item in the IWMP's implementation.

#### 4.2 WASTE INFORMATION MANAGEMENT & ENSURE WASTE MINIMISATION

Goals 2 and 4 are addressed in this section, as the waste information management system quantifies the extent of waste minimisation achieved by the Overstrand Municipality during the evaluation period. The ongoing implementation of this goal is under way and accurate data has been used to determine the portions of waste diverted from landfill. The monthly data is also reported to the Integrated Pollutant and Waste Information System (IPWIS) by the Municipality. This information is summarised as follows:

Month	Waste Diverted						Waste Disposed		
	Builder's Rubble used as Cover at Gansbaai (tonnes)	Builder's Rubble used as Cover at Karwyderskraal (tonnes)	Chips used as Cover at Gansbaai (tonnes)	Organic waste Composted at Karwyderskraal (tonnes)	Recycled at Gansbaai (tonnes)	Recycled at Hermanus (tonnes)	Total % diverted	Disposed at Gansbaai Landfill (tonnes)	Disposed at Karwyderskraal (tonnes)
Jul-21	667.21	875.54	43.70	1,071.39	-		42%	646.78	3058.21
Aug-21	896.14	946.39	40.08	1,023.39	18.98		45%	789.88	2816.87
Sep-21	1,246.74	839.84	138.22	899.88	13.00		44%	761.43	3201.94
Oct-21	2,348.20	1,374.46	170.72	1,054.96	31.26		56%	747.76	3197.98
Nov-21	1,547.72	1,457.88	114.94	1,201.28	19.48		52%	776.58	3257.28
Dec-21	1,042.02	674.02	183.10	998.32	16.52	23.80	35%	1483.99	3994.32
Jan-22	693.98	451.80	159.10	1,220.79	19.50	115.11	38%	928.65	3375.09
Feb-22	1,302.88	790.30	142.24	1,209.72	0.96	78.60	46%	925.74	3243.60
Mar-22	1,756.66	852.20	107.20	919.24	29.16	113.70	54%	720.72	2508.75
Apr-22	1,103.64	979.44	211.60	1,156.79	39.72	40.89	51%	722.31	2731.62
May-22	1,008.86	730.29	-	1,146.80	32.12	92.91	45%	721.63	2919.16
Jun-22	1,101.90	921.21	395.36	1,395.28	17.12	51.38	51%	847.63	2953.85
<b>Year Total</b>	<b>14,715.96</b>	<b>10,893.36</b>	<b>1,706.26</b>	<b>13,297.84</b>	<b>237.82</b>	<b>516.39</b>	<b>47%</b>	<b>10,073.10</b>	<b>37,258.67</b>
Average Monthly	1,226.33	907.78	142.19	1,108.15	19.82	73.77		839.43	3104.89
Average Daily (6day)	47.17	34.91	5.47	42.62	0.76	1.66		32.29	119.42

From the table above, it can be seen that on average, 47% of the Overstrand's solid waste stream has been diverted during the evaluation period. This is an increase of 7% over the previous evaluation.

### 4.3 **EFFECTIVE SOLID WASTE SERVICE DELIVERY & SAFE MANAGEMENT OF HAZARDOUS WASTE**

The Overstrand delivers weekly solid waste collection services to all residences in the municipal area. These services are also rendered free of charge to all registered indigent households. There are on average approximately 7400 registered indigent households which receive free basic services.

Waste is collected in informal settlements in the form of communal collection points (bins and skips). In addition to collection services at households, there are numerous public drop-off facilities where the public can offload their waste for collection and disposal. These facilities are either larger drop-off facilities which accommodate vehicles and large loads or “weekend” drop-offs which are smaller and convenient for weekend visitors who cannot put out their waste on collection days to deposit their waste before leaving the Overstrand. These facilities are the following:

- Hermanus Transfer Station
- Hermanus MRF & Public Drop-off
- Kleinmond Transfer Station & Public Drop-off
- Pringle Bay Mini Drop-off
- Betty’s Bay Garden Waste Drop-off
- Betty’s Bay Mini drop-off
- Gansbaai Landfill Public Drop-off
- Hawston Drop-off
- Voëlklip Mini Drop-off
- Voëlklip Drop-off
- Stanford Drop-off
- Pearly Beach Drop-off

Waste is collected from households in either wheelie bins or refuse bags. A 2-bag system is implemented in order for residents to practice source separation.

Household hazardous waste containers are available at the Gansbaai Landfill and Kleinmond Transfer Station for the temporary storage of these waste types. When the containers reach capacity, the waste is collected and transported to a treatment or disposal facility for disposal. Storage capacity at each facility for household hazardous waste is kept below 80m<sup>3</sup>. Gansbaai Landfill, Kleinmond Transfer Station and the Voëlklip Drop-off each have a hooklift bin for the collection and temporary storage of asbestos roof sheeting, gutters and down pipes, once the containers are full, they are transported to the Vissershok Hazardous Waste Landfill in Cape Town for disposal.

The rendered services as well as the availability of the above facilities prove adequate for effective solid waste service delivery.

All complaints received regarding solid waste are logged on the internal system. A work order is created when a complaint is received and sent to the appropriate responsible person. This person must then address the complaint and report back in order to complete the order.

Complaints can be logged at the following numbers for each area:

Hermanus:	(028) 313 8000
Gansbaai:	(028) 384 8300
Kleinmond:	(028) 271 8400
Stanford:	(028) 341 8500

### 4.4 **IMPROVE REGULATORY COMPLIANCE**

All solid waste management facilities that require licensing have been licensed in the Overstrand. Due to the requirements stipulated in the licences, regular audits are required of the facilities, even if they are no longer operational.

External audits are conducted by an independent service provider as required. These reports are submitted to the Overstrand Municipality, the Overberg District Municipality and the D:EADP. The municipality conducts quarterly internal audits on the operational and closed facilities.

The following solid waste facilities were audited during 2022 in terms of their respective licence/permit conditions. Note that some facilities only require audits every second year and some do not require audits any longer.

- Gansbaai Operational Landfill
- Hawston Closed Landfill (Waste body removed and area remediated)
- Hermanus RTS
- Hermanus Closed Landfill
- Kleinmond RTS
- Pearly Beach Closed Landfill
- Voëlklip Closed Landfill

The audits are used by the municipality to identify the non-compliances and addressing the identified issues. Not all issues can or need to be immediately addressed but are scheduled according to the available budget and/or according to stipulated dates in the licences. The audit reports can be obtained from the municipality on request.

The Municipality has therefore fully implemented the action under this goal in order to evaluate their solid waste management facilities and improve compliance.

#### 4.5 **BUDGETING**

The municipality appoints an external service provider annually in order to evaluate the waste disposal facilities and calculate cost estimates in order to rehabilitate each facility. This is done in accordance with the relevant accounting standards (GRAP19). The evaluation date of this annual report is at the municipal financial year-end, 30 June.

These costs need to be recalculated annually to provide the best estimate due to changes in legislation, rehabilitation requirements, expected year of rehabilitation and changing site conditions. A summary of the latest cost estimate (30 June 2022) for each site that would require future rehabilitation is provided below:

<b>Site Name:</b>	<b>Onrus Landfill</b>	<b>Hermanus Landfill</b>	<b>Hawston Landfill</b>	<b>Fisherhaven Landfill</b>
<b>Total (Excl. VAT)</b>	<b>R17,713,930.94</b>	<b>R17,807,844.61</b>	<b>R5,476,867.24</b>	<b>R14,313,944.62</b>
<b>Site Name:</b>	<b>Voëlklip Landfill</b>	<b>Stanford Landfill</b>	<b>Pearly Beach Landfill</b>	<b>Gansbaai Landfill</b>
<b>Total (Excl. VAT)</b>	<b>R24,267,578.89</b>	<b>R5,493,017.07</b>	<b>R6,913,228.32</b>	<b>R48,600,808.54</b>

These cost estimates are not all required in the assessment period, but are scheduled for upcoming financial years.

Adequate budget is available for the solid waste operational services, but currently limited funds are available for capital projects. The removal and remediation of the Hawston Landfill has been completed. The waste was transported to the Karwyderskraal Landfill for disposal. The process is almost completed with the Department confirming after further testing that no contamination is present. Establishment of a new Drop-off and material recovery facility for Hermanus is completed and currently operational.

The Municipality needs to explore sources of funding in order to implement capital projects.

#### 4.6 **SOLID WASTE EXPENDITURE DURING EVALUATION PERIOD**

<b>OPERATING REVENUE</b>	<b>R</b>
Service Charges	76,951,158
Transfers & subsidies	16,644,929
Fines, Penalties and Forfeits	840,000
Other Revenue	119,612
<b>Total Direct Operating Revenue</b>	<b>94,555,699</b>

<b>OPERATING EXPENDITURE</b>	
Employee related costs	33,616,636
Debt impairment	543,791
Depreciation & asset impairment	2,906,270
Finance charges	184,966
Inventory consumed	3,635,755
Contracted services	31,896,156
Operational Costs	14,004,646
Total Direct Operating Expenditure	<b>86,788,220</b>
<b>COSTING</b>	
Departmental Charges/Recharges	7,786,422
<b>SURPLUS/DEFICIT</b>	
Operating Surplus: Total revenue less Total Expenditure	<b>-18,943</b>

#### 4.7 IWMP REVIEW AND UPDATE

The latest IWMP was finalised and approved by Council on 27 May 2020. The next generation IWMP will be developed during 2024/2025.

### 5. CONCLUSIONS AND RECOMMENDATIONS

Based on the goals that were set in the IWMP for each solid waste management category it is evident that the Overstrand Municipality followed the IWMP and implemented all actions listed in the implementation schedule.

The Overstrand Municipality is committed to deliver efficient waste management services as is evident from the basic services they render as well as the supporting functions by implementing awareness and education, post-collection recycling, garden waste chipping and composting.

Since the finalisation of the IWMP, the Overstrand have also developed an Organic Waste Diversion Plan as required by the amended Gansbaai Landfill operational permit and are implementing it alongside the IWMP in order to achieve diversion targets. The total average organic fraction diverted at the Gansbaai Landfill from 1 July 2021 to 30 June 2022 was 36.24%. However, the diversion percentage has gradually increased monthly and the diversion rate for the month of June 2022 alone was 64.29%. The Overstrand is therefore on target to be able to achieve the target of 50% organic waste diversion at the landfill by the end of 2022.

One concern is the availability of funds for capital projects which would require large sums such as the future rehabilitation of disposal facilities. Note that even with the limited funds the municipality is still working on rehabilitating the closed sites as is evident by the current progress with Hawston project and planned financial commitment for projects such as installing a trommel screen at the Gansbaai Landfill in order to remove organics from the received waste stream and increase organic waste diversion.

Another challenge identified in the Overstrand is the amount of illegal dumping. This will require co-operation between the public, law enforcement and the solid waste department.

**ANNEXURE 1**

**AWARENESS AND EDUCATION EXAMPLES**

Munisipaliteit • U-Masipala • Municipality

**OVERSTRAND**

AUGUST 2021

P.O. Box 20, Hermanus 7200  
www.overstrand.gov.za

Hermanus	Telephone 028 313 8000	Fax 028 312 1894
Gansbaai	028 384 8300	028 384 0241
Kleinmond	028 271 8400	028 271 4100
Stanford	028 341 8500	028 341 0445

24-hour Emergency Fire Brigade 028 313 8000/8111  
028 312 2400

# Bulletin

Official newsletter of the Overstrand Municipality

## ALTERNATIVE ENERGY BREAKTHROUGH FOR OVERSTRAND

On 21 May 2021, Overstrand Municipality signed a Use-of-System Agreement with a renewable-energy trading company, Enpower Trading, thereby taking the first steps to enter the renewable-energy market in a green and sustainable manner.

This ground-breaking historic agreement will enable the municipality to take advantage of the new energy regulations to transition from dependence on Eskom to renewable energy.

Overstrand Deputy Mayor, Elnora Gillion, emphasised that although the municipality will not be able to break away completely from Eskom, it is committed to finding alternative ways of generating and/or purchasing electricity to try and lessen the effect load shedding has on local businesses and residents.

Director Nikolai Germann explained that Enpower Trading (Pty) Ltd is a South African power trading company formed by SolarAfrica Energy, a rooftop solar finance and development company, and Enterprise Power, a pan-African power development and trading firm.

He stated that Enpower Trading's business model is to source renewable energy from independent power producers, to wheel it across municipal power grids, and to offer green energy to interested customers at a discount to prevailing power tariffs.

"Enpower Trading compensates municipalities for the use of their networks and municipal sub-charges as approved by the national regulator NERSA. Over time, Enpower Trading will develop local power-storage solutions to shield municipal constituents from the risk of load shedding," Germann said.

The agreement complies with national energy policy objectives and the regulation of the power sector.

Trading operations will start once the licence has been granted to Enpower Trading by NERSA. Note, though, that power trading operations in Overstrand remains subject to NERSA's approval of municipal tariffs.

Overstrand Municipal Manager, Dean O'Neill, assured residents of the Overstrand that although the concepts and terms used are foreign, "we need to get our heads around it in order for us to be progressive. The municipality will follow proper processes with due diligence in its attempts to make 'green energy' happen as an alternative". He added that Overstrand is committed to assisting Enpower Trading with the application process for a licence from NERSA to help break Eskom's monopoly.

It is envisaged that towards the end of the year, Enpower Trading's bidding process to appoint independent power producers (IPPs) will be concluded and that these IPPs will commence with erecting plants to generate renewable energy to be fed into the municipal grid.



**HISTORIC AGREEMENT SIGNED:** Present at the signing of a Use-of-System Agreement were Deputy Mayor Elnora Gillion, Municipal Manager Dean O'Neill, Enpower Trading Director Nikolai Germann, Overstrand's, Senior Manager for Electrical Services Koos du Plessis, Enpower Trading Director Charl Alheit and Overstrand's Director for Infrastructure and Planning Stephen Müller.



## RECYCLING IN HERMANUS AND SURROUNDS BOUND TO RECOMMENCE IN SEPTEMBER



Materials-recovery and public drop-off facility currently under construction in Hermanus. The inset shows the location of the steel construction that caused the delay.

Construction of the new materials-recovery and public drop-off facility in Hermanus suffered several setbacks.

Sometime in March this year, strong winds caused severe damage to three of the steel frames erected as a structure that would house part of this facility.

On inspection, structural engineers found that the type of steel used for these frames were substandard and ordered the contractor to source a different type of steel. Given the current shortage of steel experienced in the country, this caused a delay of approximately three months in the construction process.

Nevertheless, construction is back on track and the facility ought to be ready for handover to a duly appointed operator sometime in August. With regards to the latter, the invitation to bid for the operation of this facility closed some time ago and all tenders received are currently being evaluated.

If everything goes according to plan, materials recovery in and around Hermanus will recommence in September.

Residents will be informed by way of a public notice of the date on which the two-bag collection system will kick in yet again.

# WARD COMMITTEES: Residents' direct say in local government affairs

Ward committees are regarded as the ultimate vehicle to promote good governance at local government level since it involves communities directly in planning, budgeting for, and monitoring and evaluating programmes and projects.

Even though Overstrand Municipality is renowned for the smooth functioning of its ward committee system, this system can only be maintained and even improved if the community is involved in the election and functioning of these committees.

Following on the 2021 local government elections, new ward committees have now been established for each of Overstrand's 14 wards (see map).

These committees are comprised of the Ward Councillor and up to ten other persons who have been duly nominated and elected to represent organisations/sectors, geographical blocks and other stakeholders (i.e. residents) within the boundaries of the particular municipal ward.

Together with the Overstrand Municipal Advisory Forum (OMAF), these committees will act as the official liaison mechanism regarding all strategic municipal matters affecting that particular ward. For more information on the members elected to serve on your ward's committee, contact your Ward Councillor.

## OVERSTRAND WARDS

Overstrand Municipality is located in the Overberg District, Western Cape.

Overstrand's wards are as follows:

1. Stanford, Thembelihle
2. Gansbaai North-East, Masakhane
3. Hermanus, Voëlklip and a portion of Westcliff east of De Goede Street
4. Mount Pleasant, Hemel-en-Aarde Valley and a portion of Westcliff west of De Goede Street
5. Zwelihle
6. Zwelihle
7. Sandbaai
8. Fisherhaven, Hawston
9. Kleinmond, Mountain View, Palmiet, Beverly Hills, Extension 6
10. Pringle Bay, Rooi-Els, Mooi-Uitsig, Betty's Bay, Overhills, Proteadorp
11. Baardskeerdersbos, Eluxolweni, Pearly Beach, Buffeljachtsbaai, Franskraal
12. Zwelihle
13. Onrus, Vermont
14. Blompark, De Kelders, Gansbaai South-West, Van Dyksbaai



### WORTH NOTING

- A ward committee must meet at least monthly, except when Council is in recess.
- All meetings must be open to the public, and any citizen may address the committee.
- Meetings may not be longer than two hours, except publicly announced quarterly report-back meetings which may not last longer than three hours.
- All quarterly report-back meetings must be conducted after municipal office hours.
- Ward Committee members or the person they seconded will be reimbursed for out-of-pocket expenses in accordance with the tariff schedule as developed and amended from time-to-time for this purpose.
- The municipal administration provides various forms of administrative and technical support to enhance the ward committee system.
- A ward committee's term of office coincides with that of Council.

## NEWSFLASH: RECYCLING BACK ON TRACK

Back in August this year, *Bulletin* reported on the progress being made with the construction of the new materials-recovery and public drop-off facility in Hermanus and the appointment of a contractor to operate this facility.

The good news is: That facility is now fully operational.

This means households in Greater Hermanus and the Hangklip-Kleinmond area can once again leave their recyclables in a clear plastic bag on the pavement for collection on the designated refuse-removal day.

For every clear plastic bag placed out by a household, a new one will be supplied as replacement.

If you are not a permanent resident (i.e. use your property as a holiday/weekend home), visit your nearest municipal office to get a clear plastic bag or two so you can get started. Thereafter, replacement of these bags will be automatic.

All paper, cardboard, tin cans, glass bottles and plastic can be placed in the clear plastic bags.

In this regard, keep the golden rule in mind: Wet waste goes in black bags, recyclables in clear plastic bags.

To prevent injury to our refuse collectors, please wrap any broken glass in newspaper before placing it in a bag or wheelie-bin.

May we also kindly remind all residents, holidaymakers and weekenders that refuse bags/containers should not be placed out before 07:00 on the day of collection. No wheelie-bins or refuse bags may be left on the pavement overnight. Failure to comply with this regulation may result in hefty fines, especially in problem-animal affected areas.

If you have to depart before the scheduled collection day, please drop your household waste off at the nearest municipal facility or make arrangements with a neighbour/the rental agency to take care of the bags on your behalf.

For more information on scheduled collection days and recycling, contact your nearest municipal office or send an e-mail to enquiries@overstrand.gov.za.

### YES! These go into a clear bag:

PAPER / CARDBOARD	GLASS	PLASTICS	CANS
Newspapers, magazines, paper, cardboard and boxes	Bottles and jars. No other glass (window panes, windscreens etc)	Cold-drink, water and milk containers, yoghurt and ice-cream containers, bubble wrap, plastic bags	Cold-drink and food cans, deodorant and hairspray cans, cans containing household cleansing aids

### NO! These go into a black bag:

FOOD WASTE, SCRAPS AND PEELINGS	DISPOSABLE NAPPIES, TOOTHPASTE TUBES	WET OR FOOD-SPOILED PAPER & CARDBOARD	OLD CLOTHING AND SHOES

**NEWSFLASH: OVERSTRAND BABOON MANAGEMENT PROGRAMME**  
**– FEEDING OF BABOONS AND WASTE MANAGEMENT**

The Overstrand Baboon Management Programme is the mandated responsibility of the Overstrand Municipality, but the Western Cape Government through CapeNature still regulates the feeding of baboons in public areas in accordance with the Wild Animals Regulations (Provincial Notice 955 of 1975), Regulation 42A read with Section 86(1)(d). The two organisations therefore would like to make the following information available.

**A) FEEDING OF BABOONS:** Many residents enjoy having wildlife in their gardens. In order to protect wildlife and ecosystems from the negative impacts of attaining human-derived food, wildlife in general and especially baboons must not be fed. Due to the large amount of sugar, sodium and various preservatives in many human-derived food items, the baboons' health is negatively impacted. These easily accessible food items attract the troops into the urban areas. Baboons in urban areas are also exposed to possible harm from dogs, traffic, electric cables, garden poisons and decaying or hazardous refuse. They may suffer long-term injuries from pellet guns or other weapons used by frustrated residents. Baboons often cause damage to property, and humans may be at risk of injury when holding food items when a baboon approaches. It is best practice not to display foodstuffs and to make use of proven baboon-proofing mechanisms to prevent entries into homes.

According to the current Baboon Management Guidelines of the Western Cape, a baboon who continues to break into homes and cause damage to property may be classified as a "damage-causing animal". This could lead to the removal of the animal from the troop. Feeding of baboons is illegal. Natural vegetation in protected areas surrounding our urban edge provides a much safer natural and healthy habitat and foraging environment for our baboon troops.

*The table below advises on common attractants in residential gardens and how to mitigate attracting baboons:*

**COMMON BABOON GARDEN ATTRACTANTS FOR BABOON**



ITEM	WHAT YOU CAN DO
Birdfeeders: commercial bird seed, fruit and nectar bottles	Remove fruit, birdseed feeders and nectar bottles as these are highly desirable to baboons. Rather plant indigenous flowering plants to attract birds all year round. Nectivorous birds are important pollinators to many fynbos plant species and should not become dependent on sugar water bottles as it impacts the ecosystem. Nectar bottles may harbour bacteria causing suffering to birds. Shallow basins or birdbaths with fresh water are sufficient for birds to bath and drink from daily.
Pet food bowls	Feed pets inside or do not leave cat/dog food bowls outside with food in them.
Compost heaps	A sealed composting container modified to be baboon-proof is the best solution. Always cover fresh kitchen scraps with a thick layer of mature compost and soil and then with black builders' plastic. The black plastic retains heat and moisture and will improve composting time.
Fruit/food put out for wildlife	Do not feed any wildlife. It creates dependency on exotic or human-derived foods, negatively impacting each animal's essential role in the ecosystem.
Food specifically put out for baboons	Feeding baboons is illegal. Offenders will be prosecuted.
Fruit and nut trees	It is best to remove fruit and nut trees entirely. Alternatively, harvesting ripe fruit and/or nuts will deter the baboons, but they do not always wait for fruit to ripen.
Vegetable Gardens	Secure within a baboon-proof greenhouse-type construction or sturdy wire mesh and poles.
Domestic Waste Management	Utilise an approved animal-proof waste container (bin) as stipulated in the Overstrand Integrated Waste Management Bylaw (2021). Transgressors will be prosecuted.

In accordance with the Wild Animals Regulations (Provincial Notice 955 of 1975), Regulation 42A(1) read with Section 86(1)(d), "no person may feed or attempt to feed any baboon (*Papio ursinus ursinus*) or vervet monkey (*Cercopithecus pygerythrus*) in a built-up area or public place". The first fine associated with this transgression is R2 500 and thereafter, read together with Section 86(1)(d), a fine of R40 000 or a prison sentence of one year or both and a fine of up to three times the commercial value of the fauna involved.

**B) WASTE MANAGEMENT:** Overstrand Municipality's Integrated Waste Management Bylaw of 2021 stipulates that each home owner or tenant/occupier must use animal-proof containers in all problem-animal areas, and the municipality may institute legal proceedings against the owner if the following waste management activities are not complied with.

**Section 11(5):** Visitors that leave before collection day must place their refuse in animal-proof containers supplied for the area for that purpose or take their refuse to the nearest waste handling facility as directed by the municipality.

**Section 13(5)(d):** Receptacles must be placed outside the entrance to the premises before 07:00 on the day of the week specified by the municipality for waste removal and taken back inside before sunset on the same day or such other location or times as required by the municipality in terms of a written notice to the owner or occupier of the premises.

**Section 13(1):** The municipality will collect domestic waste placed in approved domestic waste containers and business waste placed in approved animal-proof business waste containers from a location and in a condition as determined in the bylaw or any notice in terms of this bylaw. Waste placed in a location not meeting the prescriptions of the municipality or a receptacle not approved by the municipality will not be collected.

**Section 13(5)(C):** Receptacles are to be kept closed to avoid animal and insect interference and wind-blown litter in a clean and hygienic condition.

**Section 13(10):** Only animal-proof containers may be used by residents in areas which the municipality has declared as problem-animal areas, and these containers are, at cost, obtainable from the municipality or an approved vendor.

**Section 13(11):** If an owner or occupier of premises in a problem-animal area is using a receptacle that does not comply with the requirements of the municipality, he/she will be instructed to obtain an animal-proof container either from the municipality or an approved vendor and, in cases where the municipality is of the opinion that more than one animal-proof container is needed due to the volume of waste, the owner or occupier will be compelled to purchase such additional container or containers.

■ **"Animal-proof container"** means an approved waste container of suitable design with a locking mechanism that prevents problem animals (wildlife or domestic) from gaining access to waste in a waste container, as required by the municipality in specific areas.

■ **"Problem-animal areas"** means areas identified from time to time by the municipality, as listed and amended as required from time to time on Overstrand's website, where animals behave in a way that creates problems.

Please note that this letter serves as a request to comply with Part A) and Part B) of this letter. If it is found that any transgression in relation to the above continues on your property, the municipality will request that CapeNature investigate and prosecute under the regulations. If Overstrand Municipality's Integrated Waste Management Bylaw (2021) is not adhered to, the matter will be referred to the Overstrand Law Enforcement Department who will investigate the matter and who may issue a fine to the transgressors.

Your cooperation in this matter will be appreciated. For any queries, please contact Overstrand Municipality's Environmental Management Section at 028 316 3724.

**A CALL ON ALL DOG OWNERS TO BE "GOOD AMBASSADORS"**

Soon our towns will be inundated with visitors from all over, and we would like to call on everyone to ensure that their dogs are kept on a leash at all times in public areas, including beaches, cliff paths and hiking trails.

Dog walkers should stick to designated trails, respect the rules and be considerate towards other users, which implies that they should pick up after their dogs.

Note, too, that no dogs will be allowed on any of Overstrand's five Blue Flag beaches whilst the flag is flying.

The new Blue Flag season will commence on Wednesday, 1 December 2021 and will run till 16 January 2022 for Hawston, Kleinmond, Castle Beach and Onrus. For Grotto, this season will be extended until 31 March 2022.



## HERMANUS FACILITY RECYCLING ± 70 TONS OF WASTE PER MONTH ALREADY



*The Waste Material Recovery Facility situated in Schulphoek Road, next to the water treatment works and Zwelihle Primary in Hermanus*

The Waste Material Recovery Facility (MRF) in Hermanus has been fully operational since November 2021. Operated by the contractor Hermanus Recycling, this facility groups, sorts and bales everyday recyclable household waste such as glass and plastic bottles, milk cartons, tin cans, paper and cardboard originating from the Greater Hermanus and Hangklip-Kleinmond areas.

Overstrand's Solid Waste Manager, Craig Mitchell, is delighted to report that thanks to the excellent cooperation of residents, roughly 70 tons of waste is already being redirected from the Karwyderskraal landfill site monthly, which will go a long way towards extending that site's lifecycle.

He urged residents who are not already doing so to make use of the clear recycle bags provided free of charge by the municipality to dispose of their household's recyclable waste. "Helping to keep the waste stream that ends up at landfill sites to a minimum by disposing of your recyclables responsibly will definitely benefit our environment now and in the future," he said.

### Getting to grips with recycling

Since November last year, the municipality has been providing households with clear plastic bags which they can use to dispose of their recyclables. These bags should be placed out on the same day ordinarily scheduled for waste collection in your area.

For every clear plastic bag collected on that day, a replacement one will be provided free of charge.

### Do's and Don'ts

Recycling is rather simple, as long as you follow these golden rules:

- ✓ "Wet waste", in other words things that cannot be recycled, goes into the black bag and recyclables into the clear bag: Thus, only place clean and dry recyclable items such as plastic or glass bottles, tin cans, milk cartons and items made from paper or cardboard in the clear bag.
- ✓ To prevent injury to refuse collectors, please be sure to wrap shards of broken glass in newspaper before disposing thereof.
- ✓ Note that garden waste (cuttings, debris, et cetera) should be placed in a separate green bag so that it, too, can be redirected for composting.
- ✓ Don't forget that refuse bags – whether black, clear or green – should only be placed out on the day scheduled for collection: They should not be placed out ahead of time. In fact, to leave refuse bags on the sidewalk overnight is regarded as a criminal offence in those areas affected by problem animals.

### No clear bag or needing more?

Due to demand and the resultant pressure on available stock, some households may not always receive a replacement clear bag on collection day. There are also instances where households may require more clear bags to cope with volumes.

In instances such as these, replacement bags can be collected from the Hermanus (Magnolia Street) and Hangklip-Kleinmond (5th Avenue) administrations' help desks.

Note, too, that large volumes of recyclables can be dropped off at the Hermanus MRF between 08:00 and 17:00 from Monday to Friday and until 14:00 on public holidays that fall on a weekday.

Should you need to dispose of excess recyclables over a weekend, please make use of the nearest transfer station or municipal drop-off facility.

## “Wetland Action for People and Nature”

- unique peatland in Overstrand a prime example



*Pictured at the Onrus River Palmiet Peatlands are from l-r: Duncan Clews (Camphill Farm Community), Sheraine van Wyk (Whale Coast Conservation), Dr Lesley Gibson (ARC specialist researcher), Byron Sharpe (Camphill Farm Community), Simon Schoenberger (Camphill Farm Community), Cllr Clinton Lerm (Mayco member: Investment and Infrastructure), Stephen Müller (Director: Infrastructure & Planning), Liezl de Villiers (Senior Environmental Manager), Meagan Carelse (Fire Department), Tarron Dry (Environmental Services Department), Kim Heneke (Fire Department), Jill Hendricks (Environmental Services Department), Danielle Smith (Environmental Services Department) and Lester Smith (Fire Chief). In front are Dr Alanna Rebelo (ARC wetland ecologist) and Yulanda Scholtz (Fire Department).*

WORLD WETLANDS DAY IS CELEBRATED IN FEBRUARY EACH YEAR. In recognition of the essential role these natural filtering systems play in keeping the vulnerable ecosystems of our estuaries functioning, it was decided to revisit the Onrus River peatland in the Hemel-en-Aarde Valley two years after it has finally been declared safe following an underground fire that raged and smouldered for months and months on end.

The Onrus River peatland, commonly referred to as the Palmiet Peatlands, is the only upstream natural filtering system that keeps the Onrus estuary in balance. This peatland is unique since it is covered by a robust endemic shrub *Prionium serratum* (palmiet) that slows down water flow and forms peat.

Peat is organic material with a high carbon content that accumulates over thousands of years.

Covering approximately 33 ha, the Palmiet Peatlands piqued the interest of scientists the world over when a runaway brushfire set the peat alight, causing a subsurface fire that took almost a year to contain and posed a serious health threat to anyone in close proximity.

"We had to bring in a peat specialist, Dr Piet-Louis Grundling from the National Working for Wetlands Programme, which is an initiative of the Department of Forestry, Fisheries and the Environment (DFFE), and a fire specialist, Martin Bolton from the National Working on Fire Programme, to assist and to find a workable way forward to douse the underground fire. In partnership with these specialists and other government organisations and affected landowners, a specialised fire suppression plan was implemented. The Overstrand Environmental Management Department played a huge role in the coordination of these efforts and received a National Wetlands award for their efforts," said Liezl de Villiers, Overstrand's Senior Environmental Manager.

Funded by the Water Research Commission, a project titled Determine peat loss and develop management and rehabilitation protocols for peatlands in South Africa has been initiated by the Agricultural Research Council: Natural Resources and Engineering (ARC-NRE) under guidance of Dr Althea Grundling.

Vitaly important data will be collected over a period of at least two years and, thus far, the research team has dug more than 20 wells and fitted these with piezometers along three transects at the peatland to monitor water levels. The aim with this field exercise is to establish hydrological and stratigraphical baseline data before and after rehabilitation.

"Peat can only burn if it is no longer saturated, so the question is: What causes the peatland to dry out? If you think about it logically, it is because less water comes into the system," Dr Lesley Gibson, specialist researcher at the Agricultural Research Council (ARC), explained.

Invasive alien plant species might be a cause, or it could be attributed to the building of the De Bos Dam in the late 70s to supply Hermanus with drinking water as well as the expansion of agricultural activities upstream from this dam.

"Once we have collected and analysed the data, we will have a better understanding of how the system functions. Only then can we decide on how best to rehabilitate and manage it," Dr Gibson said.

The research team is confident that the first data might be available as early as October this year.



*Installing a deep piezometer  
(Photo: AT Grundling)*



*Inspecting a site to install a piezometer nest  
along a transect at the Onrus River Palmiet  
Peatland (Photo: AT Grundling)*



# BABOONS + UNSECURED REFUSE = PROBLEM

HERMANUS



Overstrand Municipality's Solid Waste by-law stipulates that each home owner or tenant/occupier must use baboon-proof containers in areas that the Municipality has identified as problem animal areas.

The Municipality may institute legal proceedings against the owner, occupier, or other person, as the case may be in terms of the Criminal Procedure Act, 1977 (Act 51 of 1977).

The declared problem animal areas are Hangklip-Kleinmond (incl. Arabella), Betty's Bay, Rooiels, Pringle Bay, portion of Onrus, Voëlklip, Fernkloof (incl. Golf Estate), Hermanus Heights, Kwaiwater, Eastcliff and portion of Hawston.

The by-law further states:

**1** Bins must be secured with baboon proof locking devices

**2** Black bags may not be left on top of or outside bins

**3** No black bags may be left on pavement or sidewalk

- Only put refuse bins out before 07:30am of the day of collection, not the day before. **NO BLACK BAGS ON PAVEMENT!**
- Each household is permitted one bin with refuse bags of household waste (which may include one bag of garden refuse).
- Garden waste should preferably be taken to the Hermanus Transfer Station for chipping and composting, alternatively it can be taken to the Prawn Flats or Hawston drop-offs for disposal.

## REFUSE COLLECTION DAYS *(days remain the same regardless of public holidays)*

<b>MONDAY</b>	Voëlklip
<b>TUESDAY</b>	Onrus, Chanteclair, Berghof
<b>FRIDAY</b>	Kwaiwater, Fernkloof, Eastcliff, Hermanus Heights, Hawston

**WEEKEND VISITORS CAN DROP REFUSE BAGS AT:**  
Voëlklip Drop-off near the OK Supermarket in 7th Street, Voëlklip.

### HOME OWNERS / HOLIDAY RENTALS:

Please make arrangements with a nearby neighbour to dispose of household waste on the scheduled day. If you are letting your property, be sure to bring all arrangements regarding the treatment of household waste to your tenants' attention.

**Baboon refuse removal issues: 028 313 8092**  
or email [enquiries@overstrand.gov.za](mailto:enquiries@overstrand.gov.za)



**HERMANUS**  
 @hermanusbaboons  
[hermanusbaboons.co.za](http://hermanusbaboons.co.za)  
[info@hermanusbaboons.co.za](mailto:info@hermanusbaboons.co.za)

**BABOONS**  
EDUCATION & AWARENESS

- Contact numbers you might need for the various emergency services:
- 028 313 8111 for emergencies relating to municipal infrastructure
  - 028 312 2400 in case of a fire, flood or medical emergency
  - 028 313 8000 for general enquiries / accounts
  - 028 313 8996 for law enforcement day-to-day complaints
  - 028 313 8980 for serious safety and security issues

In collaboration with Hermanus Baboon Action Group.

# BABOONS

## EDUCATION & AWARENESS

INITIATED BY HERMANUS BABOON ACTION GROUP

(PUBLIC PRIVATE PARTNERSHIP, IN THE INTERESTS OF COMMUNITY SAFETY AND AWARENESS)

### Proactive measures and responses to possible baboon encounters:

- Join your local Whatsapp group for Baboon Alerts.
- If renting your house, advise tenants how to manage the situation, particularly if they have children or pets.
- Know your refuse day, take responsibility for securing your bin.
- Always set your house alarm as you leave. Close all windows.
- Young baboons can access a gap 5cm or larger.
- Baboons can open sliding doors and turn handles.
- Appoint a close neighbour or friend in town to be key holder.
- If baboons enter your house, make way so they exit unhindered.
- Keep pets away in a locked room until all baboons have left.
- Never threaten baboons or take food items from them.
- Warn children to drop food items and move away, if approached by a baboon.
- Remove baboon poop using gloves and HandyAndy as soon as possible, poop may carry disease.
- Avoid leaving domestic pets outside for extended periods when you are out.
- Beams in the garden provide early warnings.
- Keep fruit bowls and food items out of sight, away from windows.
- Pick ripe fruit from fruiting trees daily. Vegetable gardens, bird feeders, dog food bowls attract baboons.



**BABOONS + UNSECURED REFUSE = PROBLEM**

Visit our website: [www.hermanusbaboons.co.za](http://www.hermanusbaboons.co.za) or

Facebook page @Hermanus Baboons or email [info@hermanusbaboons.co.za](mailto:info@hermanusbaboons.co.za) for more tips.

# OVERSTRAND MUNICIPAL RECYCLING SUPERHERO MASCOT BATTLE

## ENTRIES

**Nominate your department mascot and forward the name /department to [environintern1@overstrand.gov.za](mailto:environintern1@overstrand.gov.za) by 4 March 2022**

## WHO MAY ENTER

**ALL MUNICIPAL DEPARTMENTS**

## WHEN

**18 March 2022  
14:00-16:30**

## WHERE

**FERNKLOOF NATURE RESERVE**

## JUDGING CRITERIA

**HOW TO IMPRESS THE JUDGES?**

**PRESENT YOUR SUPERHERO MASCOT COSTUME MADE FROM RECYCLABLE MATERIAL;  
STATE YOUR RECYCLING SLOGAN;  
IDENTIFY HOW RECYCLING WILL BE IMPLEMENTED IN YOUR DEPARTMENT &  
BRING THE "GEES"**

**ENTER NOW!!!**



## JUDGING

A JUDGING PANEL WILL  
SELECT THE WINNER

## AWARDS

THE WINNING DEPARTMENT WILL BE AWARDED THE TITLE OF RECYCLING SUPERHERO OF 2022 AND RECEIVE THE TROPHY.

## DID YOU KNOW

EVERY YEAR, THE EARTH YIELDS BILLIONS OF TONS OF NATURAL RESOURCES AND AT SOME POINT, IN THE NOT-TOO-DISTANT FUTURE, IT WILL RUN OUT. THAT'S WHY WE MUST THINK AGAIN ABOUT WHAT WE THROW AWAY – SEEING NOT WASTE, BUT OPPORTUNITY.

RECYCLING IS A KEY PART OF THE CIRCULAR ECONOMY,

HELPING TO PROTECT OUR NATURAL RESOURCES.

EACH YEAR THE 'SEVENTH RESOURCE' (RECYCLABLES) SAVES OVER 700 MILLION TONNES IN CO2 EMISSIONS, AND THIS IS PROJECTED TO INCREASE TO 1 BILLION TONS BY 2030. THERE IS NO DOUBT RECYCLING IS ON THE FRONT LINE IN THE WAR TO SAVE THE FUTURE OF OUR PLANET AND HUMANITY.

y na die wens jy teen van die Paarl na osch gereis het. na het in 'n brief wat voorgelees was tydens 'n gedenkdiens wat deur ntics-rugbyklub gehou is, wens is dat sy as eendag massagraf in Mount , waar 47 van die s begrawe is, gestrooi rd. Die klub 50 jaar staande á so 'n groot verlies van jong spelers, het ook 'n ge opoffering van almal die samewerking van as nodig. Wees verseker ning kom as jy volhard tryd," was Seconna se p aan die gemeenskap. d Gibson, wat in 1972 die afrigter was, het ook oe hy die ramp ring het nadat hy die bus het omdat hy iemand onderend toe moes vat. gende dag, het hy vertel, : Gillion in sy plek met eentheid Paarl toe Gillion het ook in die

reisnoses te tek en die skare te skenk. Na afloop van die diens in Mount Pleasant Primêr se skoolsaal het die skare na die Mount Pleasant-begraafplaas beweeg waar blomme by die massagraf gelê is. **Massagraf** Willem, Magdalene, Ivan en John April en hul broer Stephen Philander, Paul en Maria

Frans, Anita Wentzel, Prins Arendse, Karel Coert, Karel Adams, Mercia Aplon, Ronald Petersen, Irene Seconna, Andrew Minnaar en Maria Davids is in Mount Pleasant te ruste gelê. Die busbestuurder Daniël Plaatjies, Gabriël Plaatjies, Willem Plaatjies, Velia Marais en Esmerelda Isaacs is in Hawston begrawe.



Judy van der Merwe (regs voor) saam met familielede by haar ma Irene Seconna se graf. Judy se broer Japle Seconna was ten tyde van die busramp die kaptein van die A-span. Hy het oorleef omdat hy nie met die bus terug na Mount Pleasant gereis het nie. Irene Seconna se suster Henrietta Pietersen en haar twee dogters Henrietta (junior) en Francis het ook in die ramp omgekóm.

  
Michael James Organisation

## INSOLVENT ESTATE AUCTION

Duly instructed, Michael James Organisation will submit for Public Auction

### ONRUSTRIVIER

Date	Friday, 24 June 2022 @ 10h30
	30 Green Street, Onrustrivier
Days	Sunday, 19 June 2022 from 11am - 2pm

**Progressive administration**      INSOLVENT ESTATE HENKA FAMILIE TRUST  
MASTER'S REF. NO.: C154/2022




ERF 2898, ONRUSTRIVIER MEASURING 495m<sup>2</sup> IN EXTENT

### BEAUTIFUL COASTAL HOME

Walking Distance To The Beach

**Modernised Home Offering** - Entertainment Room In Fireplace And Stacker Doors To Splash Pool, Timber Deck Plan Family Lounge, Kitchen With Oregon Pine Counter Tops Bedrooms, 2 With En-Suite Bathrooms, Family Bathroom

**Upper Level** - Open Plan Studio With Fireplace

Alarm System With Beams And CCTV  
Single Garage and Carport

[www.michaeljames.co.za](http://www.michaeljames.co.za) Ref: 3286

10% Deposit + commission on fall of the hammer, balance on transfer. FICA Documents will be required for auction registration.

By Appointment: **Samantha 021 851 7007 / samantha@michaeljames.co.za**  
Auctioneer: **Andrew James**

APPLICANTS    APPLICATORS    VALUERS    PROPERTY CONSULTANTS

## How to make recycling easy

The town of Hermanus takes pride in its development of a very successful Recycling at Source programme since 2005.

Hermanus Recycling wants to encourage residents to use these four easy steps to make recycling easy:

- Buy yourself one roll of transparent refuse bags. If you recycle using a black bag, your recycling will end up in the landfill with all the general household waist.
- Fill your transparent bag with cans, bottles, paper and plastic.
- Put your transparent bag out next to your black bag on refuse removal day. You will be rewarded by the municipality leaving you a replacement transparent bag.
- This way you will keep your own roll of transparent bags as a back-up for those weeks the wind blows your free bag away or your free bag gets lost for whatever reason.

If you are uncertain of what to recycle, contact Hermanus Recycling on 083 310 2319.



MY HOME

# Recycling 101: How to get back on track

Earlier this month we celebrated World Environment Day on 5 June, and yet residents are neglecting to take care of their recycling – one of the easiest things we can all do to minimise the endless waste that is choking our planet.

For almost two decades, the Overstrand Municipality has maintained a proud tradition with its Recycling at Source programme, which was seen by other municipalities as a model to be copied. By first establishing a two-bag system of waste removal in 2002, succeeded by a mechanised system of recycling in 2010, it was able to show how productive this form of waste disposal can be.

Sadly, this progressive development was severely impacted during the 2018 social unrest in Hermanus when a major section of Walker Bay Recycling's depot in Zwellihle, owned by Jan van Niekerk and contracted to the municipality, was completely burnt down. When the municipality stopped the two-bag collection system from households where the service was previously provided, recycling all but came to a standstill, save for those stalwarts who continued to take their recyclables to independent operators.

Now that the municipality's new Materials Recovery Facility (MRF) has been up and running for several

months, it appears that Overstrand residents have fallen out of the habit of recycling. So maybe it's time for a simple reminder, in four easy steps:

- Buy yourself one roll of transparent refuse bags. (If you recycle using a black bag, your recycling will end up in the Landfill with all the general household waste).
- Fill your transparent bag with cans, bottles, paper and plastic.
- Put your transparent bag out next to your wheellie bin / black bag on refuse removal day. You will be rewarded by the Municipality leaving you a replacement transparent bag.
- This way you will keep your own roll of transparent bags as a back-up for those weeks the wind blows your free bag away or your free bag gets lost for whatever reason.

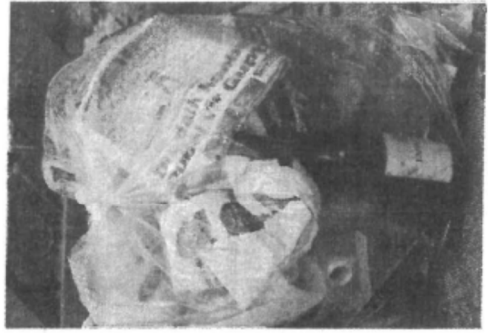
Free bags can also be collected from the Municipal offices in Kleinmond (5th Avenue) and Hermanus (Magnolia Street) as well as the Municipal Sorting Facility in Schulphoek Road in Hermanus.

Hermanus's brand-new Waste Material Recovery Facility (MRF) has been fully operational since November 2021 and the successful contractor, Hermanus Recycling, is committed to group, sort and bale recyclable



### Recycling do's and don'ts

The golden rule when it comes to waste separation and recycling is to ensure items are clean and dry, especially paper. Because paper is effectively a natural product, any contact with moisture – such as tea bags, food scraps or dirty items – will set off the degradation process. So remember to put all your 'wet' waste in a black bag, including tissues, toilet paper and serviettes, food waste, wet or dirty paper and cardboard, sticky notes, used paper plates, disposable nappies, wax-coated, foil-lined or laminated boxes, foil gift wrapping, carbon and laminated paper.



items to keep the waste stream to the Karwyderskraal Landfill site to a minimum.

The facility is situated in Schulphoek Road, next to the Water Treatment Works and Zwellihle Primary School. Waste operating hours for acceptance of recyclable waste from the general public is between 08:00 and 17:00 from Monday to Friday and until 14:00 on public holidays that fall on a weekday. The facility is currently closed on weekends, however recyclables can be left at the drop-off on a Saturday during the operational hours of 09:00 to 16:00.

If you are uncertain of what to recycle contact Hermanus Recycling on 083 310 2319.

Alternatively, dispose of these common items in the clear plastic bag so that the municipality can recycle them on your behalf:

**PAPER/CARDBOARD:** Newspapers, magazines, brochures, envelopes, office paper, paper bags and cardboard; smaller items made from cardboard such as the boxes containing your toothpaste, breakfast cereal or pills or in which eggs are sold.

**GLASS:** Bottles, containers or receptacles made from glass. Do note that large shards of shattered glass (windscreens, window panes) must be disposed of at building-rubble sites.

**PLASTICS:** Cooldrink, water and milk containers; containers of cooking oil and household cleansing products; shopping and refuse bags; yoghurt and ice-cream containers; cling film.

**CANS:** Cooldrink and food cans; deodorant and hairspray cans; cans containing household cleansing aids. Do note that tins containing things such as varnish, paint or thinners must be disposed of at building-rubble sites.

## MEDIAPERKLAARING / PRESS RELEASE

## CONTACT:

Municipal Manager: Dean O'Neill

Tel: 028 313 8003 | [mm@overstrand.gov.za](mailto:mm@overstrand.gov.za)

Overstrand Municipality



## Media Liaison &amp; Social Media Officer

Riana Steenekamp

Tel: 028 313 8043 | [rsteenekamp@overstrand.gov.za](mailto:rsteenekamp@overstrand.gov.za)

23 March 2022

### How can municipal staff recycle better – let's waste less?

The first ever Overstrand Municipal recycling mascot challenge has been hailed a huge success.

Well done to the Environmental Department who initiated this event under the umbrella of Global Recycling Day to increase awareness of, and encourage recycling in the workplace.

Hats off to colleagues who supported and assisted the mascot champions to make their fancy dress costumes from recycled material. Much thought went into the design of the costumes and how to rethink recycling, as well as with the presentation to the judges.

Waste Warriors Cecile Faro and Zinzan Solomons of Engineering Services were the overall winners. They charmed the judges with their well thought-out campaign on how colleagues at the Preekstoel office are committed to taking waste to the next level. "Our actions might seem small, but they can have a big impact on saving us and our planet," they emphasised.

Runners-up, Suzanne Stanley and Joan Pillay of Disaster Management, shared the benefits of proper education of waste management and the importance of resource recovery. Sonja Africa won the third place with her slogan of "Recycle today for a better tomorrow".

Luke Hansen and Aneesha Adendorf of Safety and Security Services dressed in matching Batman outfits made from black bags. Superhero 'warriors of telecommunications' Willene Thompson and Gino Gillion from Fire & Rescue Emergency Control Room promoted the benefits of recycling.

'Don't be a punk, recycle that junk' was most definitely the catchiest slogan of the day. Zandile Nomandela, Noxolo Liwani and the rest of the LED team have committed themselves to doing community clean-ups (especially in Swartdam Road) at least once a month on Tuesday afternoons when their offices are being decontaminated.

Judges Edith Henn (CapeNature), Brenda Walters (Dyer Island Conservation Trust), Sheraine van Wyk (Whale Coast Conservation) and honorary ex-Overstrand municipal official, Johan van Taak (or 'Mr Vullis as he was affectionately known), were impressed with the variety of ideas on how to implement recycling in everyday working life.



# DOs & DON'Ts

## for property owners renting out their houses as holiday lets and self-catering accommodation

Residents are cautioned that it is a contravention of the Integrated Waste Management By-law to place refuse on their pavements on days other than the scheduled refuse collection days. Fines will be issued to offenders.



Stick to the removal dates as per the schedules below

Ensure that collectables are on the sidewalk by no later than 07:00 on the morning of collection

Please make use of the special refuse drop-off facilities in your area should the need arise

If you are letting your property over weekends and the holiday season, please be sure to bring all arrangements regarding the treatment of household waste to your tenants' attention



Do not leave your refuse bags on the sidewalk overnight

Do not leave your refuse bags on the pavement on days when refuse is not removed

Do not throw broken glass items in your black bag without wrapping it



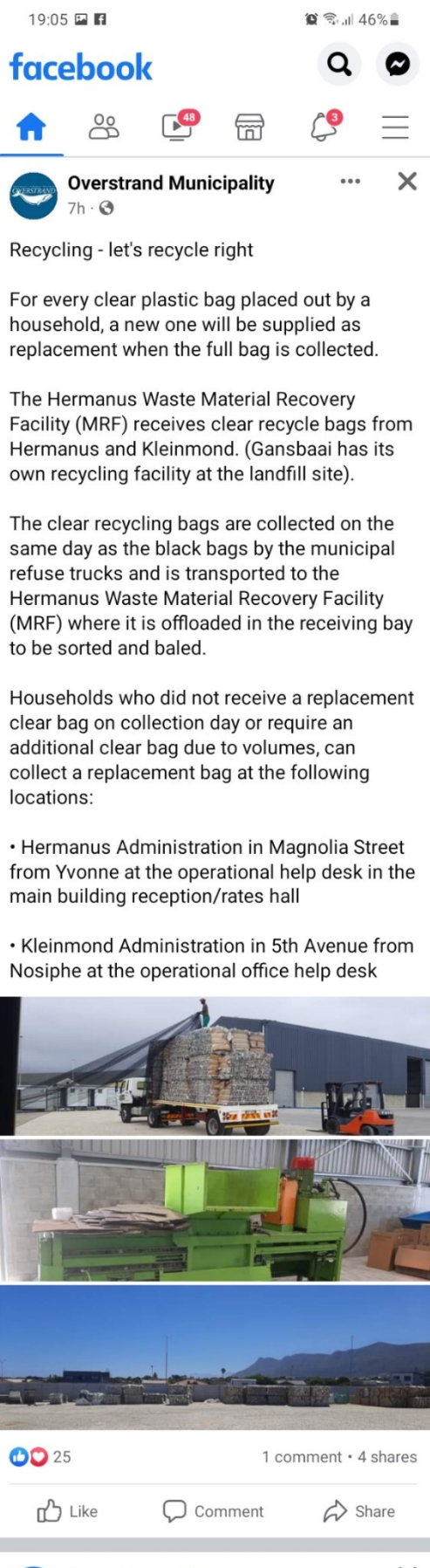
### GANSBAAI ADMINISTRATION:

**MONDAY:** Pearly Beach • **TUESDAY:** De Kelders, Masakhane, Beverly Hills

**WEDNESDAY:** Franskraal • **THURSDAY:** Kleinbaai, Baardskeerdersbos

**FRIDAY:** Gansbaai, Perlemoen Bay, Masakhane, Beverly Hills

*DAYS REMAIN THE SAME REGARDLESS OF PUBLIC HOLIDAYS.*



18:23 ▶

📶 69% 🔋



🔍 Search

Posts

About

Photos ▼

Mentions



**Overstrand Municipality**



4h · 🌐

### LIVE THEATRE TEACHES KIDS GOOD HABITS ON THE USE OF WATER

The important topic of saving water was once again addressed by the Overstrand Municipality during April when they contracted local theatre company, [Story Team](#), ... See more



03:19

🔔 📶 100% 🔋

facebook



Your Feed

Favorites

Recent



Theresa Els

19h · 🌐



Overstrand Municipality

1d · 🌐

THIS IS HOW WE RECYCLE IN OVERSTRAND IN FOUR EASY STEPS:

1. Buy yourself one roll of transparent refuse bags. (If you recycle... See more



# BABOONS + UNSECURED REFUSE = PROBLEM

HANGKLIP-KLEINMOND



Overstrand Municipality's Solid Waste by-law stipulates that each home owner or tenant/occupier must use baboon-proof containers in areas that the Municipality has identified as problem animal areas.

The Municipality may institute legal proceedings against the owner, occupier, or other person, as the case may be in terms of the Criminal Procedure Act, 1977 (Act 51 of 1977).

The declared problem animal areas are Hangklip-Kleinmond (incl. Arabella), Betty's Bay, Rooiels, Pringle Bay, portion of Onrus, Voëlklip, Fernkloof (incl. Golf Estate), Hermanus Heights, Kwaiwater, Eastcliff and portion of Hawston.

The by-law further states:

**1** Bins must be secured with baboon proof locking devices

**2** Black bags may not be left on top of or outside bins

**3** No black bags may be left on pavement or sidewalk

- Only put refuse bins out before 07:30am of the day of collection, not the day before. **NO BLACK BAGS ON PAVEMENT!**
- Each household is permitted one bin with refuse bags of household waste (which may include one bag of garden refuse).
- Garden waste should preferably be taken to the Kleinmond Transfer Station or Betty's Bay Green Waste drop-off for chipping and composting.

## REFUSE COLLECTION DAYS *(days remain the same regardless of public holidays)*

<b>MONDAY</b>	Rooi-Els, Kleinmond Sea Avenues, Kleinmond Mountain Avenues, Klein Berlyn and Heuningkloof
<b>TUESDAY</b>	Proteadorp, Overhills, Mountain View, Extension 6, Palmiet, Sunny Seas and Jock's Bay
<b>WEDNESDAY</b>	Betty's Bay and Mooiuitsig
<b>THURSDAY</b>	Pringle Bay
<b>FRIDAY</b>	Businesses

### WEEKEND VISITORS CAN DROP REFUSE BAGS AT:

Betty's Bay drop-off, Pringle Bay drop-off and Kleinmond Transfer Station.

### HOME OWNERS / HOLIDAY RENTALS:

Please make arrangements with a nearby neighbour to dispose of household waste on the scheduled day. If you are letting your property, be sure to bring all arrangements regarding the treatment of household waste to your tenants' attention.

**Baboon refuse removal issues: 028 271 8404/8400**  
 or email [enquiries@overstrand.gov.za](mailto:enquiries@overstrand.gov.za)



### BETTY'S BAY

- Join Betty's Bay Baboon Action Group
- [Bettybay.info](http://Bettybay.info)
- [baboons@bettybay.info](mailto:baboons@bettybay.info)

# BABOONS

## EDUCATION & AWARENESS

Contact numbers you might need for the various emergency services:

- 028 313 8111 for emergencies relating to municipal infrastructure
- 028 312 2400 in case of a fire, flood or medical emergency
- 028 313 8000 for general enquiries / accounts
- 028 313 8996 for law enforcement day-to-day complaints
- 028 313 8980 for serious safety and security issues

In collaboration with Betty's Bay Baboon Action Group.

# BABOONS

## EDUCATION & AWARENESS

PUBLIC PRIVATE PARTNERSHIP, IN THE INTERESTS OF COMMUNITY SAFETY AND AWARENESS

### Proactive measures and responses to possible baboon encounters:

- If you need advice on baboon proofing your home, please contact Renee Bish on 060 656 7341
- Join your local Whatsapp group for Baboon Alerts.
- If you are renting out your house, advise tenants how to manage the situation, particularly if they have children or pets.
- Know your refuse day, take responsibility for securing your bin.
- Always set your house alarm as you leave. Close all windows.
- Young baboons can access a gap 5cm or larger.
- Baboons can open sliding doors and turn handles. Install a sliding door bolt or angle bracket for added security.
- Appoint a close neighbour or friend in town to be key holder.
- If baboons enter your house, make way so they can exit unhindered.
- Keep pets away until all baboons have left.
- Never threaten baboons or take items from them.
- Teach children to drop food items and move away, if approached by a baboon.
- Remove baboon poop using gloves and disinfectant.
- Avoid leaving domestic pets outside for extended periods when you are out.
- Security beams in the garden provide early warnings.
- Keep fruit bowls and food items out of sight, away from windows.
- Pick ripe fruit from fruiting trees daily. Vegetable gardens, bird feeders, dog food bowls and uncovered compost heaps attract baboons.
- Do not put bird seed out on your lawn. This is one of the biggest attractions for the baboons.
- Do not feed the baboons actively in any way.
- If the baboons repeatedly return to your home please seek advice on how to prevent this.
- Baboons will keep returning if they find rewards. Discourage your neighbours from feeding the baboons and encourage everyone in your community to use the correct bins.
- Do not leave your car outside if you are able to park it under cover. Baboons jumping from the house to the car may cause damage.



**BABOONS + UNSECURED REFUSE = PROBLEM**

For more advice, tips or information email: [baboons@bettysbay.info](mailto:baboons@bettysbay.info)

Facebook: Join the Betty's Bay Baboon Action Group



**30 May 2022**

**Project Report:**

**Waste Management**

<b>Description:</b>		
<b>Dates:</b>	17/18/19/23/24/25/27 May	
<b>Number of learners:</b>	1518	
<b>Theme:</b>	Waste Management	
<b>Languages:</b>	Afrikaans, English, and isiXhosa	
<b>Area:</b>	Gansbaai, Stanford, Hermanus, Kleinmond	

In May 2022 Story Team completed an educational theatre programme for the Overstrand Municipality, focussing on Waste Management and Recycling.

The Team visited schools in Gansbaai (Gansbaai Laerskool), Stanford (Okkie Primary), Kleinmond (Kleinmond Primary) and Hermanus (Laerskool Hermanus, Mount Pleasant Primary, Waldorf Primary & Zwelhile Primary). Our main aim was to involve learners in the learning process. Encouraging them to become responsible adults and warriors for our environment. We want them to play with us, participate with our characters and empower themselves to make better decisions for the future. We guide them with knowledge on the importance of waste management and the impact thereof on our planet. We introduced the concept of RRR – Reuse, recycle and repair. Encouraging individuals to look at waste differently, motivating them to rather reuse and repair. We focussed on materials like plastic straws and polystyrene items that has a very negative impact on the environment.

The programme reached One-thousand five hundred and eighteen (1518) learners with very positive feedback from educators.

***Dear Anette***

***Today marks a week since the StoryTeam visited our school. On behalf of my Grade 4 and 5 Colleagues, I would like to thank you for having shared such an important and inspirational message centred on the importance of recycling with our children. Regarding the sponsored recycling bags: our grade 4 and 5 educators have handed them out and I am certain that they will be put to good use in the respective homes.***

***With thanks***

***Colin Sutherland***



**Beste Anette**

***Namens die onderwysers en leerders van Laerskool Gansbaai ons hartlike dank vir jul vertoning. Hulle het dit almal baie geniet en die onderwysers is van mening dat dit 'n baie oulike manier was om die tema aan ons leerders oor te dra.***

***Sterkte met jul onbaatsugtige diens en liefde vir ons kinders.***

***Vriendelike groete.***

**Annette Wessels**

**Administratiewe Klerk / Finansies**

**E-pos: [admin@laerskoolgansbaai.co.za](mailto:admin@laerskoolgansbaai.co.za)**

Five actors (One senior actor, two junior actors and two interns) from the community of the Overstrand were employed for this programme.

We believe that the theatre is a powerful tool to create communication between communities, building opportunities for future collaboration and participation in the conservation of our environment.

Thank you for the opportunity to educate the young generation of our district.

*Celeste, Anette, and THE TEAM*



