

JANUARY 2026

Bulletin

Wishing all our residents a prosperous New Year and best wishes for 2026

EXPLORE OVERSTRAND'S GIS MAPPING PORTAL



A helpful tool for all stakeholders with an interest in the Overstrand

The Overstrand Municipality offers a GIS Mapping Portal, which is a valuable resource for anyone wanting to explore the area's geographic and spatial information. Whether you are a resident, estate agent, prospective homebuyer, or simply interested in the region, the GIS Viewer provides easy access to key information such as zoning, property boundaries and heritage status, to name but a few.

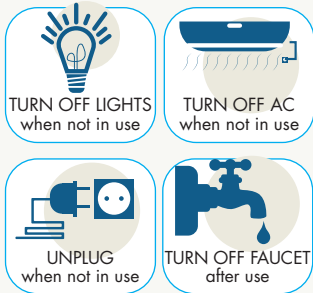
This user-friendly tool allows you to search for a specific property and switch different map layers on or off to view relevant environmental overlay information, zoning or heritage features. By clicking on an erf on the map, a pop-up will appear showing basic property information. Overstrand aerial photography is also available and can be viewed as a map layer.

The platform also allows users to create ready-to-print maps by simply downloading them. These maps include street numbers, street names and erf numbers, and can be printed up to A0 paper size.

The GIS Viewer is available on the Overstrand Municipality website. Simply visit www.overstrand.gov.za, click on GIS Mapping, or copy the following link into your browser: <https://overstrand.maps.arcgis.com/home/index.html>

While every effort is made to ensure the information provided is accurate and up to date, the Overstrand Municipality cannot guarantee the correctness of the data. The information is intended for general use and should be verified before being used for decision-making purposes. The Municipality cannot be held liable for any damages arising from reliance on this information.

MORE PEOPLE, MORE PRESSURE - LET'S ALL BE SMART ABOUT OUR USAGE



The Overstrand is seeing an increase in visitors, family gatherings and festive season activity. With more people in the area, this is placing added pressure on local infrastructure. Higher consumption during this time affects all services.

During the previous festive season, solid waste teams collected as many as 51 refuse bags from a single household, showing the impact that increased usage can have. The festive season is a time to relax and enjoy being with family and friends, but it also means extra pressure on essential services, especially water, wastewater and waste management systems.

Overstrand dams are currently at reasonably healthy levels for this time of year, but they are lower than they were during the same period in 2024. While there are no water restrictions in place at this stage, water use and dam levels will be closely monitored throughout the summer months.

So far in 2025, Hermanus has received only 475 mm of rainfall, which is well below the long-term average of 640 mm. From 1 August 2025 to date, just 74 mm of rain has fallen, compared to 209 mm during the same period last year. Residents and visitors are encouraged to help manage resources by avoiding watering gardens or filling swimming pools during the day, and by switching off lights and air-conditioning when leaving a room.

OVERSTRAND MUNICIPALITY'S, TRAFFIC SERVICES SET TO GO CASHLESS



Overstrand Municipality's Traffic Services will be implementing a cashless payment system at all three of its traffic cash offices in Hermanus, Gansbaai, and Kleinmond from the beginning of December 2025.

From 1 December 2025, no cash payments will be accepted for these transactions. All payments must be made via card, Electronic Fund Transfer (EFT), or bank deposit. Card machines are available at all cashier points for convenience.

The move to a cashless system forms part of the department's ongoing efforts to improve efficiency, enhance security, and streamline record-keeping. The implementation date was chosen to take effect before the festive season - a period when cash-handling risks such as theft, robbery, and corruption are more likely to increase.

For now, the cashless system will apply only to the Traffic Department and not to the Municipal Court or Finance cashiers at the respective rates halls. Residents who still wish to pay traffic fines in cash can do so at various external outlets that provide payment facilities for municipal fines.

BANKING DETAILS

The banking details for paying traffic fines or vehicle licence renewals via EFT are available on the municipal website at www.overstrand.gov.za. Search for Pay & Purchase to find the correct banking information.

TRAFFIC OFFICE HOURS:

The Overstrand Traffic offices are open from Monday to Thursday, 08:00 to 13:00 and 13:30 to 15:15, and on Fridays from 08:00 to 13:00 and 13:30 to 14:15. The Hermanus Traffic Office remains open during lunch.

For more information, contact the Overstrand Traffic Services switchboard at 028 313 1044 or 028 313 8136



CALLS TAKING TOO LONG TO ANSWER? USE THE CITIZEN APP



Collab Citizen App



The Overstrand Municipality Contact Centre is extremely busy and receives **1 000+ calls daily**. High call volumes cause delays – **download & use the Citizen App** for faster service.

1

Register

2

Complete your details

3

Complete your details

4

Complete your details

5

Complete your details

6

Click here to select your Channels

7

8

Select Channels and then you are ready to go!

ID number is not compulsory but when we launch the Account Statement on the App (coming soon) your ID will be used to verify and provide your Account.

PLEASE VISIT THE OVERSTRAND WEBSITE FOR MORE INFORMATION AND HELP ON HOW TO USE OUR CITIZEN APP

<http://www.overstrand.gov.za/overstrand-collab-citizen-app>

