



ERF 1784, BERGSIG ROAD, SANDBAAI, OVERSTRAND MUNICIPAL AREA: APPLICATION FOR DEPARTURE AND DETERMINATION OF AN ADMINISTRATIVE PENALTY: ENGELBRECHT & SCORGIE ARCHITECTURAL OFFICE ON BEHALF OF MENGBETON (PTY) LTD

Notice is hereby given in terms of Section 48 of the Overstrand Municipality Amendment By-Law on Municipal Land Use Planning, 2020 (By-Law) that an application, applicable to Erf 1784, Sandbaai (the property), has been received for the following:

- Departure in terms of Section 16(2)(b) of the By-Law to relax the height restriction from 12.0m to $\pm 18.950\text{m}$ and $\pm 13.349\text{m}$ respectively, to accommodate the existing two cement storage silos on the property.
- Deviate from the Hermanus Business Park Owners Association's Design Guide Document to relax the height restriction applicable to buildings/structures from 7.5m to $\pm 18.950\text{m}$ and $\pm 13.349\text{m}$ respectively, to accommodate the existing two cement storage silos on the property.
- Determination of an administrative penalty in terms of Section 16(2)(q) of the By-Law.

Full details regarding the proposal are available for inspection during weekdays between 08:00 and 16:30 at the Department: Town Planning, Paterson Street, Hermanus. Any comments must be in writing in accordance with the provisions of Sections 51 and 52 of the By-Law to reach the Municipality (16 Paterson Street, Hermanus / (f) 028-313 2093 / (e) alida@overstrand.gov.za) on or before **12 July 2024**, quoting your name, address and contact details, interest in the application, and the reasons for comments. Telephonic enquiries can be made to the **Town Planner, Mr H Boshoff** at 028-313 8900. The Municipality may refuse to accept comments received after the closing date. Any person who cannot read or write may visit the Town Planning Department where a municipal official will assist them in order to formalize their comment.

ERF 1784, BERGSIGSTRAAT, SANDBAAI, OVERSTRAND MUNISIPALE AREA: AANSOEK OM AFWYKING EN BEPALING VAN 'N ADMINISTRATIEWE BOETE: ENGELBRECHT & SCORGIE ARGITEKTONIESE KANTOOR NAMENS MENGBETON (PTY) LTD

Kennis word hiermee gegee ingevolge Artikel 48, van die Overstrand Munisipaliteit Wysigingsverordening vir Munisipale Grondgebruikbeplanning, 2020 (Verordening) dat 'n aansoek, van toepassing op Erf 1784, Sandbaai (die eiendom), ontvang is vir die volgende:

- Afwyking ingevolge Artikel 16(2)(b) van die Verordening vir die verslapping van die hoogtebeperking vanaf 12.0m na $\pm 18.950\text{m}$ en $\pm 13.349\text{m}$ respektiewelik om die twee bestaande sementopberg-silos op die eiendom, te akkommodeer.
- Af te wyk van die "Hermanus Business Park Owners Association's Design Guide Document" om die hoogtebeperking van toepassing op geboue/strukture te verslap vanaf 7.5m na $\pm 18.950\text{m}$ en $\pm 13.349\text{m}$ respektiewelik om die twee bestaande sementopberg-silos op die eiendom, te akkommodeer.
- Bepaling van 'n administratiewe boete ingevolge Artikel 16(2)(q) van die Verordening.

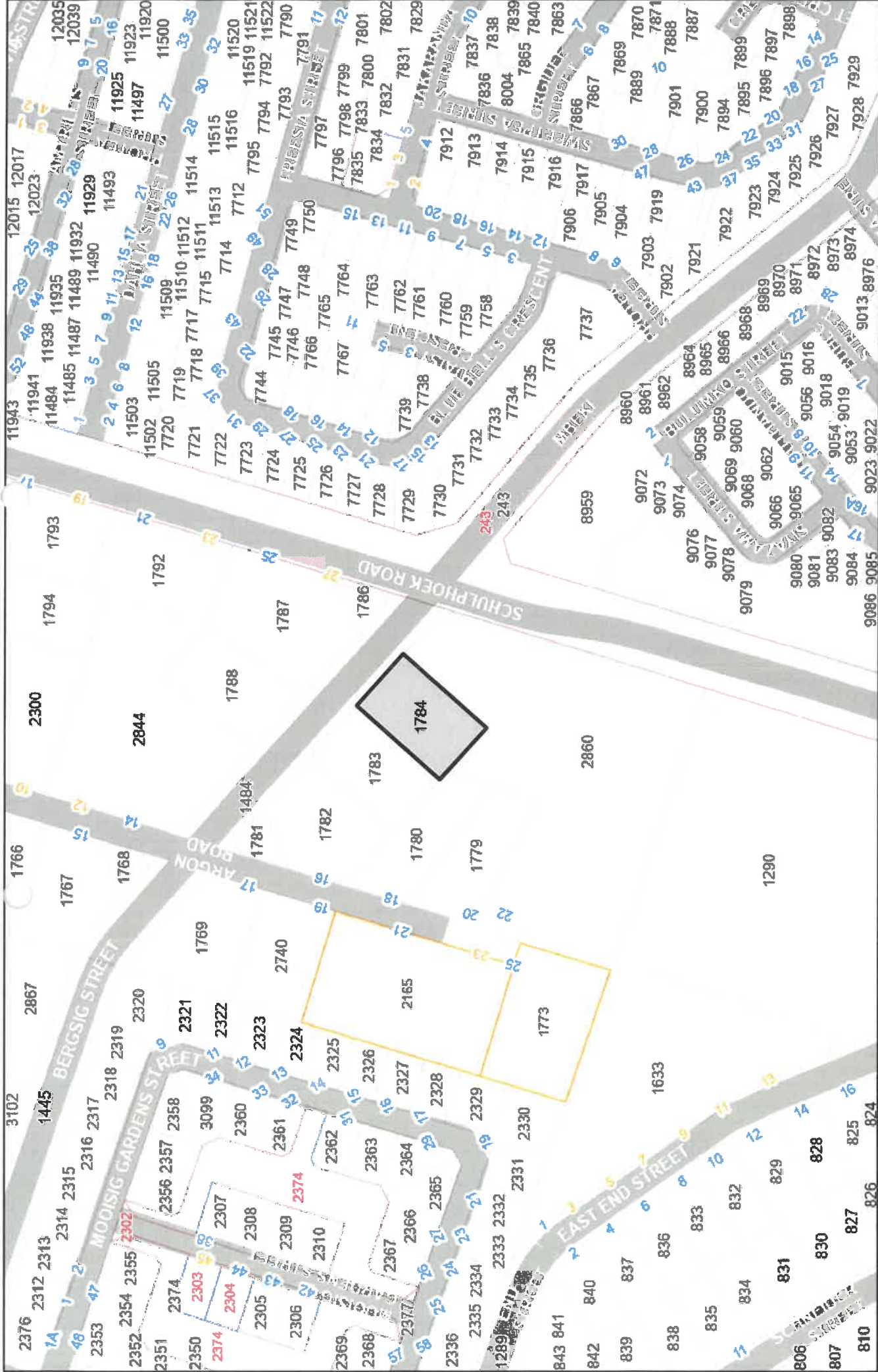
Volle besonderhede rakende die voorstel is beskikbaar vir inspeksie gedurende weksdae tussen 08:00 en 16:30 by die Departement: Stadsbeplanning, Patersonstraat 16, Hermanus. Enige kommentaar op die voorstel moet skriftelik wees in ooreenstemming met Artikels 51 en 52 van die Verordening en die Munisipaliteit (Patersonstraat 16, Hermanus / (f) 028-313 2093 / (e) alida@overstrand.gov.za) bereik voor of op **12 Julie 2024**, met u naam, adres en kontakbesonderhede, belang in die aansoek, sowel as die redes vir kommentaar. Telefoniese navrae kan gerig word aan die **Stadsbeplanner, Mnr H Boshoff** by 028-313 8900. Die Munisipaliteit mag weier om kommentare wat na die sluitingsdatum ontvang word, te aanvaar. Enige persoon wat nie kan lees of skryf nie kan die Departement Stadsbeplanning besoek waar hul deur 'n munisipale amptenaar bygestaan sal word ten einde hul kommentaar te formaliseer.

ISIZA 1784, BERGSIG ROAD, SANDBAAI, UMMANDLA WOMASIPALA WASE-OVERSTRAND: ISICELO SOPHAMBUKO NOKUMISELWA KWESOHLWAYO SOLAWULO: ENGELBRECHT & SCORGIE ARCHITECTURAL OFFICE EGAMENI LIKA-MENGBETON (PTY) LTD

Isaziso sinikezelwa ngokwemiqathango yeCandelo 48 loMthetho kaMasipala oLungisiweyo woMasipala wase-Overstrand ongoCwangciso lokuSetyenziswa koMhlaba kaMasipala, 2020 (uMthetho kaMasipala) sokokuba isicelo, esisebenza kwiSiza 1784, eSandbaai (ipropati), sifunyenwe kulungiselelwa okulandelayo:

- Uphambuko ngokwemiqathango yeCandelo 16(2)(b) loMthetho kaMasipala lokunyenyiswa kwesithintelo somphakamo ukususela kwi12.0m ukuya kwi- $\pm 18.950\text{m}$ ngokwahluka-hlukeneyo, ukulungiselela izitora ezibini zezisele zesamente kwipropati.
- Ukuphambuka kuXwebhu lwesiKhokhelo soYilo seHermanus Business Park Owners ukulungiselela ukunyenyiswa kwesithintelo somphakamo osebenza kwizakhiwo ukususela kwisi-7.5m ukuya kwi- $\pm 18.950\text{m}$ kunye ne- $\pm 13.349\text{m}$ ngokwahluka-hlukeneyo, ukulungiselela izitora ezibini zezisele zesamente ezikwipropati.
- Ukumiselwa kwesohlwayo solawulo ngokwemiqathango yeCandelo 16(2)(q) loMthetho kaMasipala.

linkcukacha ezipheleleyo mayela nesi sindululo ziyafumaneka ukuze zihlwe kwiintsuku zaphakathi evekini ukusukela phakathi kwentsimbi yesi-08:00 neye-16:30 kwiSebe: loCwangciso lweDolophu, Paterson Street, Hermanus. Nabani na onezimvo ezibhaliweyo angazingenisa ngokwezibonelelo eCandelo lama-51 nelama-52 loMthetho kaMasipala (16 Paterson Street, Hermanus / (f) 0283132093/ (e) alida@overstrand.gov.za) ngomhla okanye phambi **12 EyeKhala 2024**, uchaze igama lakho, idilesi neenkcukacha ofumaneka kuzo, umdla wakho kwesi sicelo nezizathu zokuhlomla kwakho. Imibuzo ngefowuni ingathunyelwa ku**Mcwangcisi weDolophu, Mnu H Boshoff** kule nombolo 028-313 8900. UMasipala angala ukwamkela izimvo ezifike emva komhla wokualwa. Nabani na ongakwazi ukufunda nokubhala angandwendwela kwiSebe loCwangciso lweDolophu apho igosa likamasipala liza kumnceda aqulunqe izimvo zakhe.



ERF 1784, BERGSIG ROAD, SANDBAAI, HERMANUS

Locality Map



**PROPOSED DEPARTURE FROM ZONING SCHEME REGULATIONS
AND RELAXATION OF GUIDELINE HEIGHT
RESTRICTIONS**

ERF 1784 : BERGSIG ROAD,

Division : SANDBAAI

OVERSTRAND MUNICIPALITY

MOTIVATION REPORT (AMENDED 04 JUNE 2024)

1. Background

The owner of this property, Mengbeton (Pty) Ltd, has instructed B. Scorgie from the firm Engelbrecht & Scorgie Architectural Office to apply for a Departure from the Zoning Scheme Regulations. Erf 1784 Sandbaai measures 1440m² in extent and is held by Title Deed no. T000021770/2004. The property owner purchased the property in order to trade with Readymix, providing a service to the building industry.

2. Application detail

2.1 Application is made in terms of the following:

- Chapter 4 Section 16(2)(b) of the Overstrand Municipality's By-Law on Municipal Land Use Planning 2020, for a permanent Departure from the provisions of the Zoning Scheme.
- Section 8.1.2(c) of the Overstrand Municipality Zoning Scheme Regulations for the relaxation of the maximum permissible height on the Erf to accommodate the two silos, i.e. :
 - o Silo 1 : The 12m height restriction to be relaxed to 18,950m
 - o Silo 2 : The 12m height restriction to be relaxed to 13,31m
- The relaxation of the height restriction as stipulated in the Hermanus Business Park Guidelines :
 - o Clause 3.2.2 – the maximum height of the roofs shall be 7,5m above ground level

3. Need and desirability

3.1 Property description

Erf 1784 Sandbaai is situated at Bergsig Street, Sandbaai. Erf 1784 is located amongst other industrial building within the Hermanus Business Park and diagonally opposite "Lenvalco Readymix", a company who provided a similar service.

3.2 Zoning

Erf 1784 Sandbaai is zoned "General Industry (IND 1)". Surrounding properties in the Hermanus Business Park are all zoned (IND 1) and the Whale Coat Mall is zoned "Business Zone 1 (BZ 1)".

3.3. Land use

The land is being used for a Readymix plant which has various daily operational scenarios, i.e. :

- Off-landing/ receiving of materials to site
- Batching and loading of vehicles
- Parking of vehicles at night

The attached drawings No. J1103-01/02 and J1103-02/02 ("**Annexure L1 & L2**") reflect the operational flow for the successful execution of these scenarios.

The vehicles can be maneuvered within the boundaries of the property to not interfere with adjoining properties or traffic flow in Mbeki Road.

The following structures have been erected or constructed on the Erf, which all form part of the operations of the Readymix Plant :

- An office and toilet building
- A water purification plant
- 2 x cement silos
- Loading station and hopper
- Storage container
- Aggregate storage areas
- Loading ramp

Lenvalco Readymix (in close proximity) also has a similar type usage with the close lying Whale Coast Mall being a retail outlet.

The structure areas on Erf 1784 Sandbaai, can be summarized as follows :

- Office and toilet building – 48,729m²
- Water recycling plant – 26,350m²
- 2 x cement silos – 7,325m² + 7,030m² = 14,355m²
- Loading station and hopper – 50,054m² + 8,481m² = 58,535m²
- Storage container – 14,770m²
- Aggregate storage areas (open) – 168,408m²
- Loading ramp – 66,88m²

Permissible coverage for Industrial Zone 1 is 75%. The total coverage of the structures is 5,406% well below permitted coverage factor.

3.4 Proposal

3.4.1 Background to the proposal:

- o The owners purchased the property in 2004 with the intention of establishing a Readymix plant
- o A layout drawing reflecting the relevant structures was submitted to Building Control and subsequently approved on 02/11/2005
- o Construction of the buildings, storage area and loading ramp, etc. commenced after approval of the drawings. This was coordinated simultaneously with the erection and installation of the batching plant and cement storage silos
- o The Specialist contracted by Mengbeton (Pty) Ltd to install the batching plant, deviated slightly from the approved drawings due to actual on-site operational requirements necessary to optimize the production of the Readymix plant

3.4.2 **Proposal Detail:**

3.4.2.1 Section 8.1.2(c) – *“The maximum height of any building measured from the base level to the top of the structure, is 12,0m, provided that where a structure of greater height is required for the industrial function of the property, the Municipality may grant approval for such greater height”*. The 12,0m height restriction requires a relaxation to 18,950m to accommodate the two cement silos

3.4.2.2 The max height restriction of 7,5m above ground level as reflected in the guideline, requires a relaxation to 18,950m in order to accommodate the two cement silos

3.5 **Character of the environment**

3.5.1 The property forms part of Hermanus Business Park which is zoned Industrial Zone 1. Most of the properties are used for either : storage, wholesale or industry. Erf 1783, 1780 and 2860, Sandbaai, have similar usages to Erf 1784. Hermanus Business Park is governed by prescriptive guidelines. Other than the overall height of the 2 silos, the structures and buildings on Erf 1784 have been constructed in accordance with the Zoning Scheme Regulations and Hermanus Business Park guidelines

3.5.2 The operational functionality and current layout of the Readymix plant makes provision for :

3.5.2.1 Parking for staff and customers

3.5.2.2 Batching maneuverability

3.5.2.3 Loading maneuverability

3.5.2.4 Parking of Operational vehicles and Readymix delivery trucks overnight

3.6 **Desirability of the proposed utilization:**

The property is zoned Industrial Zone 1 and will remain industrial zoning as it lies within an industrial zone.

3.6.1 The operational layout of the Readymix plant as reflected in the attached drawings, has optimized the available ground surface area

3.6.1.1 The batching plant and cement storage silos have been positioned at the back corner of the property in order to minimize the visual impact on the street façade

3.6.1.2 The attached approved drawing no. 6850/01217/01A as approved on 02/11/2005, reflects two silos with an approved height of 10,5m. As noted in the Zoning Scheme Item 8.1.2(c) – *“The maximum height of any building measured from the base level to the top of the structure, is 12,0m, provided that where a structure of greater height is required for the industrial function of the property, the Municipality may grant approval for such greater height”*.

The Zoning Scheme makes provision for structures higher than prescribed heights where the usage and necessity for a structure can be justified

3.6.1.3 Silos for cement storage

3.6.1.3.1 Cement storage silos are an integral and an accepted component of a Readymix batching and distribution plant

- 3.6.1.3.2 The drawings approved in 2005 by Council ; when the Readymix plant was established ; must have taken cognizance of the above fact hence the approval of the silos at a height of 10,5m which exceeds the 7,5m height restriction as reflected in the guidelines
- 3.6.1.3.3 Erf 1784 is surrounded by Erf 1783, Erf 1780 and Erf 2860 (all zoned Industrial Zone 1). The attached areal view reflects this orientation and highlighted position of the two cement silos. Once Erf 2860 has been developed, the cement silos will be less of a visual factor as the buildings on Erf 2860 will obscure part of the silos
- 3.6.1.3.4 As can be seen from the attached layout drawing, there is no simple and affordable solution if the height of the silos was rejected. Due to the required volume of cement which needs to be available for batching, a much lower silo with an equal storage volume would take up considerably more ground surface area. The mechanics of the existing batching plant will also need to be discarded and a new operation installed, in order to :
- o Accommodate the space requirements for lower silos with an equal volume
 - o Pump the cement powder up unto the batching plant, where currently it is fed by a simple pump system. This will come at considerable cost to the business

3.6.1.4 Silos to host antennas

- 3.6.1.4.1 A 2nd very important consideration for the overall height of the silos is relevant to the Overstrand as a whole. Sonic Wi-Fi serviced by "Herotel" uses the height of silos to carry their antennas.

Letters from both Sonic-Wi-Fi and Herotel are attached to this document marked as "**Annexure J1 & J2**". In both these letters, it clearly reflects how the lowering of the silos will negatively impact on service delivery or loss of service to part of the Overstrand area.

- 3.6.1.4.2 It should be considered that there are height restrictions everywhere in the Overstrand Municipality, but that Telecommunications is an ever-increasing aspect of business and day to day life. The need for high structures to host antennas will remain and in the future most probably increase in demand.

I ask : would an industrial area not be preferable for the positioning of a high structure to accommodate these antennas instead of a residential area?

Driving through towns which have limitations on high structures one often sees buildings deformed by all the antennas attached to the facades and roof structures

3.7 Visual assessment

A visual assessment by an external Consultant, "Viewpoint Solutions", is attached which is self-explanatory

3.8 Draft Environmental Management Plan

A draft Environmental Management Plan prepared by an external Consultant "Viewpoint Solutions" is attached and is self-explanatory

3.9 **Heritage value:**

The property is not situated within a heritage overlay zone and hence has no grading.

3.10 **Impact on Municipal Engineering services:**

No additional electrical, water or sewerage will be required other than the standard connection provided. A detailed layout of the existing stormwater and sewerage has been shown on the site plan. All relevant traps, gullies and catchpits are in place to ensure that there is no sewerage spillage into the stormwater system.

4. **Application for administrative penalty:**

4.1 **Background and site history:**

- The application area is zoned as Industrial Zone 1 : General Industry (IND 1) in terms of the Overstrand's Town Planning Scheme
- Erf 1784 is located at Bergsig Road, Hermanus Business Park, Sandbaai. Erf 1784 is surrounded by Industrial Zone 1 Erven. Erven 1783 and 1780 have improvement on. Erf 2860 is still vacant.
- The buildings and structures comprise :
 - o An office and toilet building
 - o Aggregate storage areas
 - o A water purification plant
 - o A storage container
 - o A loading ramp
 - o A batching plant
 - o 2 cement storage silos
 - o A landing station and hopper
- The mentioned buildings and structures make up the Readymix batching and distribution plant which is a functional and operational business
- The unauthorized structures are highlighted throughout this application document and does not cause negative impact on nature, the environment, streetscape, surrounding properties or on traffic as discussed earlier in this departure document.
- The 2 silos contravene the respective height restrictions as follows :
 - o Business Park height restriction
 - Silo 1 contravenes the height by 11,450m
 - Silo 2 contravenes the height by 5,81m
 - o Zoning Scheme Regulations :
 - o Silo 1 contravenes the height by 6,950m
 - o Silo 2 contravenes the height by 1,31m

4.2 **Summary of the motivation:**

Our client's motivation of the proposed is highlighted throughout this Departure Application, but can be summarized as follows:

- The owners purchased the property in 2004 with the intention of establishing a Readymix plant

- A layout drawing reflecting the relevant structures was submitted to Building Control and subsequently approved on 02/11/2005
- Construction of the buildings, storage area and loading ramp, etc. commenced after approval of the drawings. This was coordinated simultaneously with the erection and installation of the batching plant and cement storage silos
- The Specialist contracted by Mengbeton (Pty) Ltd to install the batching plant, deviated slightly from the approved drawings due to actual on-site operational requirements necessary to optimize the production of the Readymix plant

4.3 **Assessment of application:**

- As indicated above, the unauthorized building work is in contravention of the Overstrand Municipality's amended By-Laws on Municipal Land Use Planning 2020. Application is made for the determination of an administrative penalty in respect of the sections of the silos which contravene the permitted height restriction.
- In terms of Section 90(50)(b) of the By-Law, an administrative penalty for a building work contravention may not be more than 100% of the value of the building, construction and Engineering work unlawfully carried out
- Administrative penalty : calculation
 - o Unauthorized section of silo above the height restriction as provided by the Specialist :
 - Silo 1 = R81 000-00
 - Silo 2 = R40 000-00
 - An amount which is not more than 100% of R121 000-00 may be imposed as an administrative penalty

4.4 **The nature, duration, gravity and extent of the contravention:**

The following factors need to be considered when determining an appropriate administrative penalty, as contemplated by Section 90 of the Overstrand Municipality's amended By-Laws on Municipal Land Use Planning :

4.4.1 **Nature:**

The unauthorized section of silo exceeding the 12,0m height restriction as discussed elsewhere in this departure document

4.4.2 **Duration:**

The duration is not really applicable I would think. Our client was not served with a notice, but if a time frame must be allocated, then the structure has been standing in place for approximate 16 years (2006 – present)

4.4.3 **Gravity:**

The contravention is minor in nature and does not impact negatively on the environment, streetscape and surrounding properties. The silos have been in position since establishment of the business in 2006. The height of the silos has only recently been highlighted when the parking arrangement of the Readymix trucks came under scrutiny.

4.4.4 **Extent:**

Silo 1 – 6,950m above the 12m height restriction
Silo 2 – 1,31m above the 12m height restriction

4.5 **A report by a Quantity Surveyor in matters of unauthorized building/ construction:**

Refer to "Annexure K" for the costing in respect of the unauthorized structure contravening the height restriction

4.6 **Whether the unlawful conduct was stopped:**

Overstrand Municipality did not stop the building work and have also not issued an official notice with regards to the transgression

4.7 **Whether the person allegedly involved in the contravention has previously contravened this By-Law or a previous Planning Law:**

As far as can be ascertained, there is no evidence that the owner of the property has previously contravened this By-Law

4.8 **Reasons for decision:**

Reasons for the recommended decision may be summarized as follows :

- The Readymix plant was established in 2005/ 2006 with the current silos (contravening the height restriction) being installed at the same time. The approved drawings already reflected silos with a height of 10,5m which was approved
- The height of the silos has never been questioned since they were installed almost 16 years ago. Nor has the owner been served with an official notice
- The height restriction as imposed by both the Business Park guidelines, as well as the Zoning Scheme Regulations has not considered all types of industry. In the Zoning Scheme Regulations Item 8.1.2(c), provision is made for a concession to exceed the 12,0m height restriction should there be a justifiable reason and due to the operational requirements of the business

Taking the above into account and considering the minor footprint of these two silos, as well as the fact that no negativity from surrounding property owners has been received, the impact would be considered low

4.9 **Recommendation:**

In light of the above assessment, we appeal to your generosity that an administrative penalty of 0% be imposed for the contravention of the height restriction

5. **Spluma planning principles:**

5.1 **Spatial justice:**

This application will not perpetuate spatial injustices

5.2 **Spatial sustainability:**

This application is located within the existing industrial area and well within the urban node of the Overstrand Municipality. The development will not encroach on any agricultural land and will not have any negative influence on the surrounding environment.

5.3 **Efficiency:**

The development application optimizes the use of the property in terms of the Municipal services and infrastructure.

5.4 **Spatial resilience and forward planning:**

The Overstrand Spatial Development Framework (SDF) (2006), earmarks the area where Erf 1784 is situated for industrial purposes. The structures to which the departures refer, form part of a typical industrial building. The character and zoning of the property will remain unchanged and therefore the property falls within the existing planning for the Sandbaai area.

5.5 **Good administration:**

The application follows the correct planning procedures, a thorough public participation process and will be followed by the Municipality.

6. **Conclusion:**

6.1 We appeal to your experienced consideration for this departure application taking the following relevant detail into account with the rest of the documentation :

- 6.1.1 The Readymix plant was established in 2005/ 2006 with the current silos (contravening the height restriction) being installed at the same time. The approved drawings already reflected silos with a height of 10,5m which was approved
- 6.1.2 The height of the silos has never been questioned since they were installed almost 16 years ago. Nor has the owner been served with an official notice
- 6.1.3 The height restriction as imposed by both the Business Park guidelines, as well as the Zoning Scheme Regulations has not considered all types of industry. In the Zoning Scheme Regulations Item 8.1.2(c), provision is made for a concession to exceed the 12,0m height restriction should there be a justifiable reason and due to the operational requirements of the business
- 6.1.4 Taking the above into account and considering the minor footprint of these two silos, as well as the fact that no negativity from surrounding property owners has been received, the impact would be considered low
- 6.1.5 Cement storage silos are an integral and accepted component of a Readymix batching and distribution plant
- 6.1.6 Telecommunications delivery to parts of the Overstrand area will severely be affected or lost due to the lowering of the silos. Attached "Annexure" J1 & J2
- 6.1.7 Height restrictions everywhere in the Overstrand Municipality, but that Telecommunications is an ever-increasing aspect of business and day to day life. The need for high structures to host antennas will remain and in the future most probably increase in demand. Would an industrial area not be preferable for the positioning of a high structure to accommodate these antennas instead of a residential area?

NOTES

GENERAL:
 The drawings are to be used for construction purposes only. The contractor is responsible for obtaining all necessary permits and approvals from the relevant authorities. The drawings are to be used in accordance with the contract documents and any amendments thereto. The contractor is to be responsible for ensuring that the work is carried out in accordance with the drawings and any amendments thereto. The contractor is to be responsible for ensuring that the work is carried out in accordance with the drawings and any amendments thereto.

LEVELS AND DIMENSIONS:
 All levels are in meters above sea level (MASL). All dimensions are in millimeters unless otherwise stated. The contractor is to be responsible for ensuring that the work is carried out in accordance with the drawings and any amendments thereto.

FLOOR CONSTRUCTION:
 The floor construction is to be in accordance with the drawings and any amendments thereto. The contractor is to be responsible for ensuring that the work is carried out in accordance with the drawings and any amendments thereto.

ROOF CONSTRUCTION:
 The roof construction is to be in accordance with the drawings and any amendments thereto. The contractor is to be responsible for ensuring that the work is carried out in accordance with the drawings and any amendments thereto.

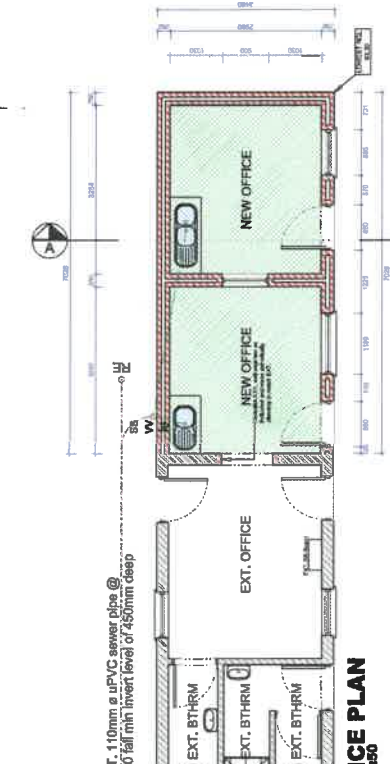
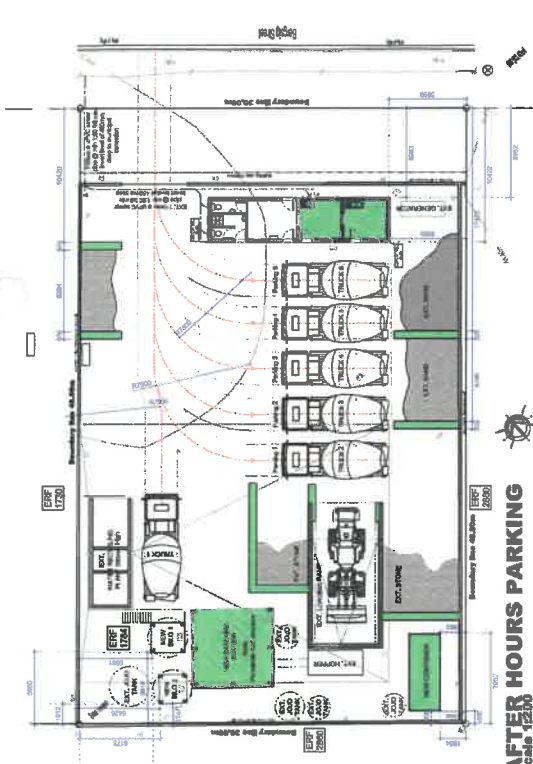
INSULATION FOR ROOFING:
 The insulation for roofing is to be in accordance with the drawings and any amendments thereto. The contractor is to be responsible for ensuring that the work is carried out in accordance with the drawings and any amendments thereto.

GLASS CUR (Energy Efficiency) NOTES:
 The glass cur is to be in accordance with the drawings and any amendments thereto. The contractor is to be responsible for ensuring that the work is carried out in accordance with the drawings and any amendments thereto.

AREA OF EXISTING STRUCTURES	
EXT. 1	2,000.00m ²
EXT. 2	1,500.00m ²
EXT. 3	1,000.00m ²
EXT. 4	500.00m ²
EXT. 5	200.00m ²
EXT. 6	100.00m ²
EXT. 7	50.00m ²
EXT. 8	25.00m ²
EXT. 9	12.50m ²
EXT. 10	6.25m ²
EXT. 11	3.12m ²
EXT. 12	1.56m ²
EXT. 13	0.78m ²
EXT. 14	0.39m ²
EXT. 15	0.19m ²
EXT. 16	0.09m ²
EXT. 17	0.05m ²
EXT. 18	0.02m ²
EXT. 19	0.01m ²
EXT. 20	0.00m ²
EXT. 21	0.00m ²
EXT. 22	0.00m ²
EXT. 23	0.00m ²
EXT. 24	0.00m ²
EXT. 25	0.00m ²
EXT. 26	0.00m ²
EXT. 27	0.00m ²
EXT. 28	0.00m ²
EXT. 29	0.00m ²
EXT. 30	0.00m ²
EXT. 31	0.00m ²
EXT. 32	0.00m ²
EXT. 33	0.00m ²
EXT. 34	0.00m ²
EXT. 35	0.00m ²
EXT. 36	0.00m ²
EXT. 37	0.00m ²
EXT. 38	0.00m ²
EXT. 39	0.00m ²
EXT. 40	0.00m ²
EXT. 41	0.00m ²
EXT. 42	0.00m ²
EXT. 43	0.00m ²
EXT. 44	0.00m ²
EXT. 45	0.00m ²
EXT. 46	0.00m ²
EXT. 47	0.00m ²
EXT. 48	0.00m ²
EXT. 49	0.00m ²
EXT. 50	0.00m ²
EXT. 51	0.00m ²
EXT. 52	0.00m ²
EXT. 53	0.00m ²
EXT. 54	0.00m ²
EXT. 55	0.00m ²
EXT. 56	0.00m ²
EXT. 57	0.00m ²
EXT. 58	0.00m ²
EXT. 59	0.00m ²
EXT. 60	0.00m ²
EXT. 61	0.00m ²
EXT. 62	0.00m ²
EXT. 63	0.00m ²
EXT. 64	0.00m ²
EXT. 65	0.00m ²
EXT. 66	0.00m ²
EXT. 67	0.00m ²
EXT. 68	0.00m ²
EXT. 69	0.00m ²
EXT. 70	0.00m ²
EXT. 71	0.00m ²
EXT. 72	0.00m ²
EXT. 73	0.00m ²
EXT. 74	0.00m ²
EXT. 75	0.00m ²
EXT. 76	0.00m ²
EXT. 77	0.00m ²
EXT. 78	0.00m ²
EXT. 79	0.00m ²
EXT. 80	0.00m ²
EXT. 81	0.00m ²
EXT. 82	0.00m ²
EXT. 83	0.00m ²
EXT. 84	0.00m ²
EXT. 85	0.00m ²
EXT. 86	0.00m ²
EXT. 87	0.00m ²
EXT. 88	0.00m ²
EXT. 89	0.00m ²
EXT. 90	0.00m ²
EXT. 91	0.00m ²
EXT. 92	0.00m ²
EXT. 93	0.00m ²
EXT. 94	0.00m ²
EXT. 95	0.00m ²
EXT. 96	0.00m ²
EXT. 97	0.00m ²
EXT. 98	0.00m ²
EXT. 99	0.00m ²
EXT. 100	0.00m ²

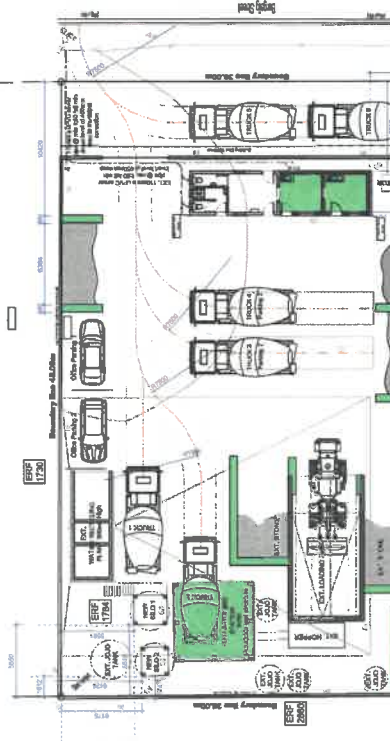
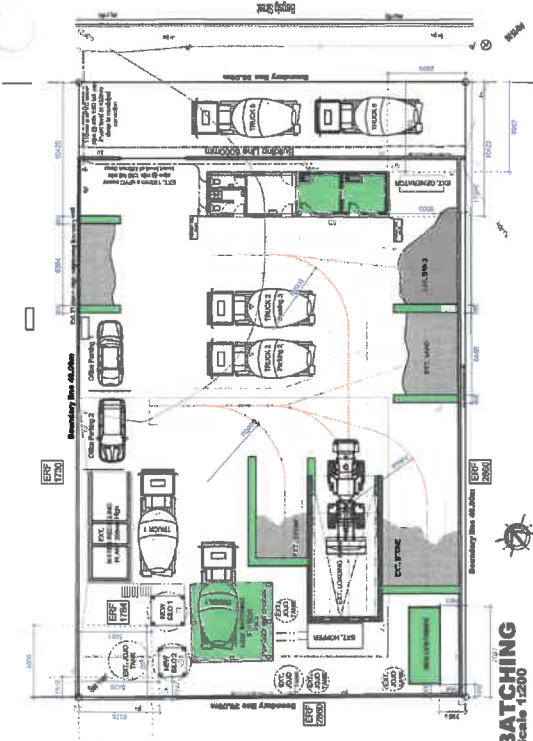
ENGELBRECHT & SCORRIE
 ARCHITECTURAL OFFICE
 14 Old Street, London EC1A 1DF, UK
 Tel: +44 (0)20 7552 2222
 Fax: +44 (0)20 7552 2223
 Email: info@engelscorrie.com
 Website: www.engelscorrie.com

DRAWN BY:	Project Manager
CHECKED BY:	Structural Engineer BT 1029
PROJECT DESCRIPTION:	ADDITIONAL AND ALTERNATIVE
PROJECT CONTENT:	Building, Alter, Upgrade and Other jobs, Other, Extensions, alterations and floors
CLIENT:	Samuel Street
ADDRESS:	VTM
DATE:	29 Aug 2022
SCALE:	1:100
PROJECT NUMBER & PAGE No.:	J1102-01-02
DATE:	29 Aug 2022
SCALE:	1:100
PROJECT NUMBER & PAGE No.:	J1102-01-02



GENERAL NOTES:

1. All work is to be in accordance with the drawings and any amendments thereto.
2. The contractor is to be responsible for ensuring that the work is carried out in accordance with the drawings and any amendments thereto.
3. The contractor is to be responsible for ensuring that the work is carried out in accordance with the drawings and any amendments thereto.
4. The contractor is to be responsible for ensuring that the work is carried out in accordance with the drawings and any amendments thereto.
5. The contractor is to be responsible for ensuring that the work is carried out in accordance with the drawings and any amendments thereto.
6. The contractor is to be responsible for ensuring that the work is carried out in accordance with the drawings and any amendments thereto.
7. The contractor is to be responsible for ensuring that the work is carried out in accordance with the drawings and any amendments thereto.
8. The contractor is to be responsible for ensuring that the work is carried out in accordance with the drawings and any amendments thereto.
9. The contractor is to be responsible for ensuring that the work is carried out in accordance with the drawings and any amendments thereto.
10. The contractor is to be responsible for ensuring that the work is carried out in accordance with the drawings and any amendments thereto.



GENERAL NOTES:

1. All work is to be in accordance with the drawings and any amendments thereto.
2. The contractor is to be responsible for ensuring that the work is carried out in accordance with the drawings and any amendments thereto.
3. The contractor is to be responsible for ensuring that the work is carried out in accordance with the drawings and any amendments thereto.
4. The contractor is to be responsible for ensuring that the work is carried out in accordance with the drawings and any amendments thereto.
5. The contractor is to be responsible for ensuring that the work is carried out in accordance with the drawings and any amendments thereto.
6. The contractor is to be responsible for ensuring that the work is carried out in accordance with the drawings and any amendments thereto.
7. The contractor is to be responsible for ensuring that the work is carried out in accordance with the drawings and any amendments thereto.
8. The contractor is to be responsible for ensuring that the work is carried out in accordance with the drawings and any amendments thereto.
9. The contractor is to be responsible for ensuring that the work is carried out in accordance with the drawings and any amendments thereto.
10. The contractor is to be responsible for ensuring that the work is carried out in accordance with the drawings and any amendments thereto.

SECTION A-A
 Scale: 1:100

NORTH WEST ELEVATION
 Scale: 1:100

SOUTH WEST ELEVATION
 Scale: 1:100

NORTH EAST ELEVATION
 Scale: 1:100

SOUTH EAST ELEVATION
 Scale: 1:100

Architectural elevations showing the building's facade from different perspectives. Each elevation includes window and door details, roof lines, and height markers. Notes specify materials like 'uPVC' and 'Alu' and provide dimensions for window heights and sill levels.

