

SIDES Metres		ANGLES OF DIRECTION	CO-ORDINATES Y System WG19 X		S.G. No.  3550/2002
		Constants	±	0,00 +3 800 000,00	
A B	232,19	272 46 00	A -	42 301,24 +	12 770,73
B C	155,83	22 10 10	B -	42 533,16 +	12 781,94
C D	229,82	94 32 10	C -	42 474,36 +	12 926,25
D A	148,32	202 10 30	D -	42 245,26 +	12 908,08
Servitude Data:					
B E	61,36	272 46 00	E -	42 594,45 +	12 784,88
E F	25,02	2 49 00	F -	42 593,22 +	12 809,87
F G	70,14	92 46 00	G -	42 523,16 +	12 806,49
G B	26,51	202 10 10			
WELTEVREDE (101)			△ -	44 328,74 +	14 376,79
BOSCHKOP (4)			△ -	41 043,04 +	7 110,86

Approved  
*[Signature]*  
Surveyor-General  
2002.09.25

**Descriptions of Beacons:**

A - 12mm iron peg  
B - wooden fence post  
All beacons are: 20mm iron peg  
*other*

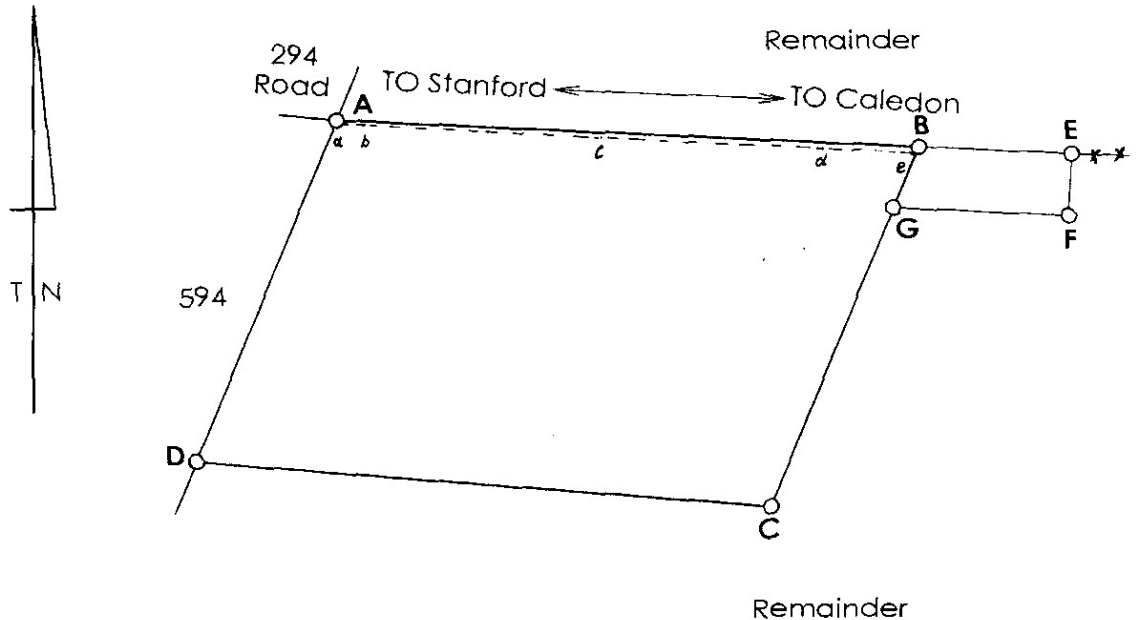
**Servitude Note:**

The figure BEFG represents an access servitude over the the remainder as shown.

THIS PORTION IS SUBJECT TO CONDITIONS REFERRED TO IN SECT. 11 (C) OF ACT 21/1940.

APPROVED IN TERMS OF SECT. 4 OF ACT 70/1970  
REF 35462  
DATE 2001.10.25

APPROVED IN TERMS OF SECT. 23 OF ACT 15/1955  
REF 16 (Spec 213) (TPI-11/2001)  
DATE 2001.10.25



Scale 1: 3 000

The figure A B C D

represents 3,3306 hectares of land, being

**ERF 1772 STANFORD**

situate in the Overstrand Municipality  
Administrative District of Caledon Province Western Cape  
Surveyed in July 2002  
by me

*[Signature]*

Land Surveyor NA Clark (PLS 1072)

This diagram is annexed to

No. dated T110766/2002

i.f.o.

Registrar of Deeds

The original diagram is

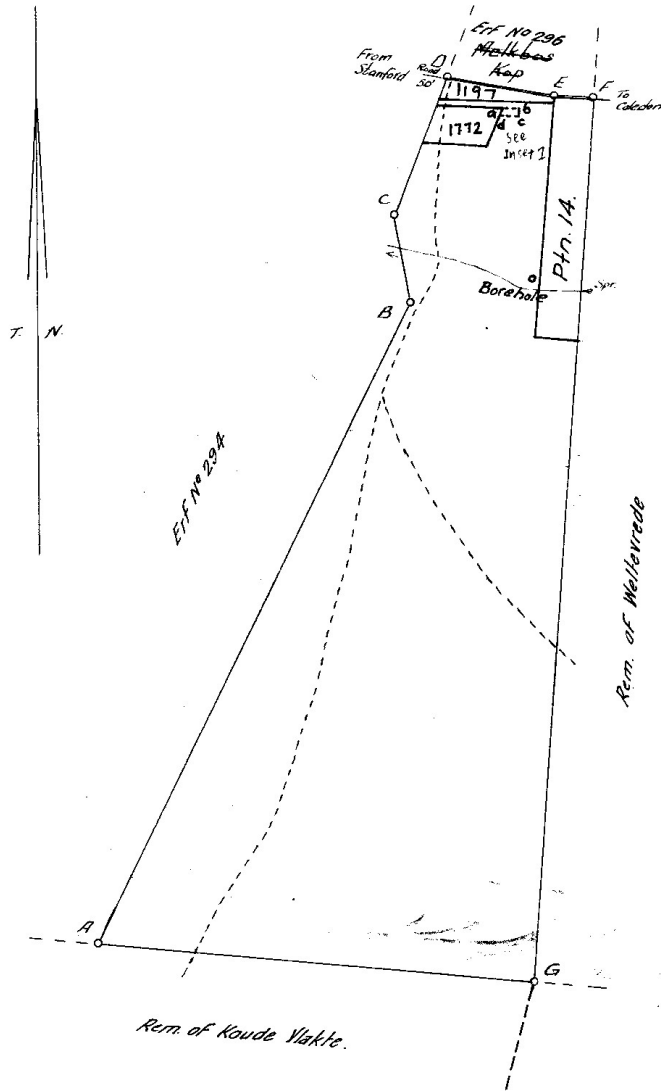
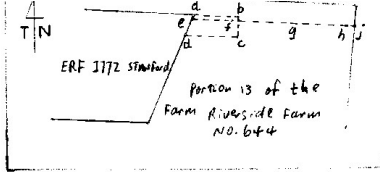
No.37/1945  
annexed to D/T  
No 1985.72.3554  
(Farm 644 portion 13)

File No. CLDN.644  
S.R. No. E1600/2002  
Comp. AINX-1444(M4309)  
AINX-1472(M4311)

**FOR ENDORSEMENTS  
SEE BACK OF DIAGRAM**

## SERVITUDES/LEASEHOLD AREAS

SURVEY RECORD	DIAGRAM NO.	DESCRIPTION	DEED	INITIALED
1673/2008	3579/2008	The line abcde represents the centreline of a Services and Access Serv. 4,00m wide except were the cadastral boundary is closer than 2 meters from the centreline the servitude extent up to the cadastral Boundary.		

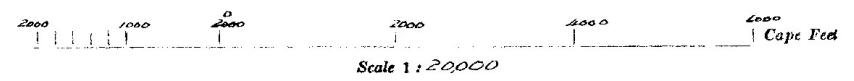


SIDES	Feet	ANGLES OF DIRECTION	CO-ORDINATES Constant to be added
AB	7943.0	206. 31. 30	A + 8000.00 + 84000.00 + 6119.0 + 13717.0
BC	980.8	168. 43. 20	B + 2571.8 + 6610.1
CD	1661.8	201. 52. 20	C + 2763.6 + 5648.2
DE	1184.0	279. 53. 10	D + 2144.4 + 4106.1
EF	464.4	275. 37. 20	E + 978.0 + 4309.4
FG	9863.6	4. 18. 20	F + 515.8 + 43549
GA	4886.0	95. 33. 50	G + 1256.0 + 14190.7

Approved  
*J. J. Rouquier*  
Surveyor General.

- Beacon Description
- ✓ A Large iron fence post in centre of cairn 3'6" x 1'
  - B Stout iron fence post
  - C " " " " projecting 4'6" Cairn & point
  - D Cairn
  - E "
  - F "
  - G "

Portion 13 (.....)  
(a portion of Portion.....) of the farm  
Riverside Farm No. 644  
**CALEDON**



The figure A.B.C.D.E.F.G  
represents 346.2333 Morgen of land being EFF No 304  
(a portion of EFF No 293) Stanford.

Now Portion 13 of the farm  
Klein Riviers Valley

situate in the Division of Caledon  
Surveyed in Oct 1926 & July 1940 by me

Province of Cape of Good Hope.  
*A. L. Hill*  
Land Surveyor.

This diagram is annexed to D/T. No. 3554 Dated 22.3.1945 I.F.O. S.A.Z. van Brakel	The original diagram is No. _____ annexed to	S. G. File No. <u>5941/11</u> S.R. No. E. <u>977/45</u>
---	--	--

SURVEY RECORD	DATE	DESCRIPTION	AREA	INITIALED	REMARKS
E1043/47	4080/47	Pln. 14.	10,3658M.	22045/47	
E894/93	2431/93	ERF 1197	2,2139	79985/94	WT.
E9858/96	7400/96	Pln. 24	3,3306Ha	110766/2002	
E1600/2002	3550/2002	Erf 1772	3,3306 Ha	110766/2002	WT.

STANFORD

SURVEY RECORD	DATE	DESCRIPTION	AREA	REMARKS
E1043/47	4080/47	The black circle repr. a Serv. Bore-hole.	22045/47	
E1600/2002	3550/2002	The figure abcd represents an access servitude.	110766/2002	WT.
1673/2008	3579/2008	The line eghj represents the centreline of a Services and Access Servitude 4m wide		

*S. A. M. M. M.*

2008-07-28

for SURVEYOR-GENERAL

SCHEDULE OF PROPERTIES

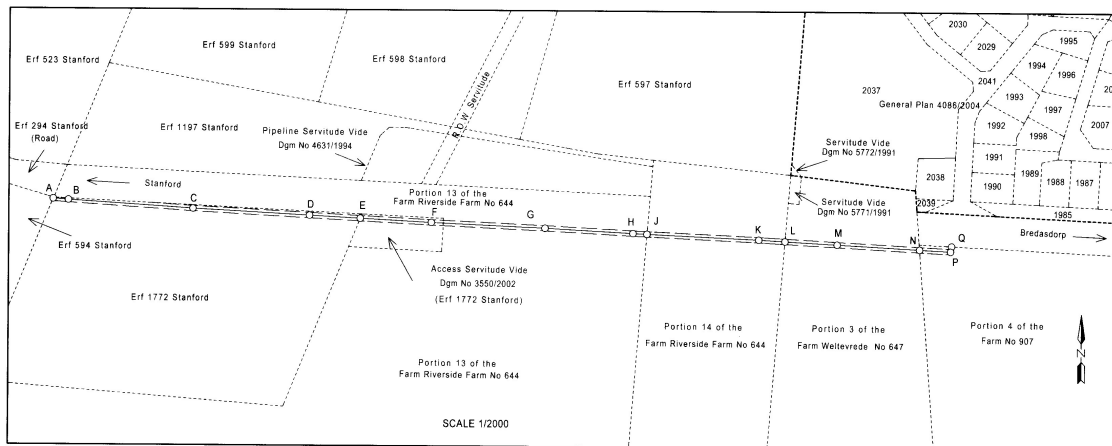
DESCRIPTION OF SERVITUDE	PROPERTY	SG DIAGRAM NO	DEED OF TRANSFER	DEED OF SERVITUDE	DEED OF CANCELLATION
1 The line ABCDE represents the centerline of a Services and Access Servitude 4.00 m wide <b>except where</b> the cadastral boundary is closer than 2 meters from the centreline the servitude <b>extends up to</b> the cadastral boundary as shown.	Erf 1772 Stanford	3550/2002	T110766/2002		
2 The line EFGHJ represents the centerline of a Services and Access Servitude 4.00m wide as shown	Remainder Portion 13 of the Farm Riverside Farm No 644	37/1945	1945- 72 -3554		
3 The line JKL represents the centerline of a Services and Access Servitude 4.00m wide as shown	Portion 14 (a Portion of Portion 13) of the Farm Riverside Farm No 644	4080/1947	1947- -22045		
4 The line LMN represents the centerline of a Services and Access Servitude 4.00m wide as shown	Portion 3 of the Farm Weltevrede 647	4082/1947	1947-450-22482		
5 The line NPQ represents the centerline of a Services and Access Servitude 4.00m wide as shown	Portion 4 of the Farm No 907	6173/2001	T56099/2006		

SERVICES AND ACCESS SERVITUDES

OVER THE PROPERTIES QUOTED IN THE SCHEDULE

situate in the Overstrand Municipality  
Administrative District of Caledon  
Province of Western Cape

S.G.OFFICE NOTES



SIDES Metres	ANGLES OF DIRECTION		CO-ORDINATES Y System: WG19' X	
	Constants		± 0.00	± 0.00'
AB	11.45	274 05 20	A	-42 300.98 +3812 771.38
BC	93.93	273 46 00	B	-42 312.40 +3812 772.19
CD	87.64	273 04 10	C	-42 406.03 +3812 778.95
DE	38.38	273 05 40	D	-42 493.54 +3812 783.05
EF	53.52	273 05 40	E	-42 531.86 +3812 785.12
FG	85.56	272 33 50	F	-42 582.31 +3812 788.01
GH	65.93	273 05 10	G	-42 670.78 +3812 791.84
HJ	10.53	272 40 10	H	-42 736.62 +3812 795.39
JK	83.98	272 40 10	J	-42 747.14 +3812 795.88
KL	19.68	273 16 10	K	-42 831.03 +3812 799.79
LM	39.24	273 16 10	L	-42 850.67 +3812 800.91
MN	82.08	273 09 10	M	-42 889.85 +3812 803.15
NP	23.34	273 09 10	N	-42 951.84 +3812 806.57
PQ	4.07	191 05 00	P	-42 975.14 +3812 807.85
			Q	-42 975.92 +3812 803.86
			Boschkop (4)	-41 043.04 +3807 110.86
			Weltevreden 2 (101)	-44 328.74 +3814 376.78

Description of Beacons  
A, E, J, L, N, Q : 20mm Round Iron Peg  
B, C, D, F, G, H, K, M, P : Centre of manhole cover

Surveyed in June 2008 by me

P.F. SPRONK (PLS-07/9)  
Professional Land Surveyor

FILE No Cldn. 644  
SURVEY RECORDS No. 1673/2008  
LPI C0130021 (Stanford)  
LPI C0130000 (Caledon Admin)  
COMPILATION: AINX-1444 (M4309)  
AINX-1472(M4311) AI-3DDB(3385)

Servitude dgm 3579/2008

Servitude dgm filed as Plan  
**DUMMY TRIPLICATE**

Servitude plan

Dgm nr **3579/2008**

Admin. District **Caledon**

**FILED AS**

**PLAN No. 3579/2008**

Servitude dgm 3579/2008