

Munisipaliteit • U-Masipala • Municipality



SUSTAINABLE DEVELOPMENT & LIVING



Sustainable Development • *Kogelberg Biosphere*
Overstrand Municipality • Transitional Zone • **Wetland Conservation**
Fynbos • **Wildlife** • Welcome! • **Firewise** • **Biodiversity**
Conservation • Environmental Management • **Water Use**
Reduce-Reuse-Recycle • Climate Change • **Go Green** • *Wildlife*
Village Life • **Go Green** • *Community Care* • *Don't Feed the Wildlife*



KOGELBERG BIOSPHERE
OVERSTRAND MUNICIPAL VILLAGES



CONTENTS

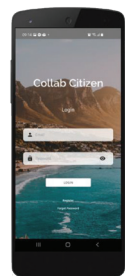
1.	SUSTAINABLE DEVELOPMENT GOALS	3
2.	THE KOGELBERG BIOSPHERE (KB)	4
3.	THINKING OF BUYING?	6
3.1.	The Overstrand Zoning Scheme Regulations	6
3.2.	The Overstrand Environmental Management Overlay Zones (EMOZ)	6
3.3.	Environmental Legislation: The Responsibilities of the Landowner	6
3.4	Wetland Ecosystems	7
	a) The National Water Act: Water Use License Applications (WULA)	8
	b) The National Environmental Management Act (NEMA, 1998): Environmental Impact Assessment (EIA) Regulations (2010, as amended).	8
3.5	Western Cape Biodiversity Spatial Plan	9
4.	YOU'RE A HOMEOWNER CONGRATULATIONS! NOW WHAT?	10
4.1.	The Transfer of Sale & Vegetation Management	10
4.2.	Building Guidelines	10
4.3.	Waste Management	11
4.4.	Sewage	12
4.5.	Essential Tips for Building Sustainably	13
4.6.	Water Scarcity	14
4.7.	Light Pollution	14
5.	ARE YOU FIREWISE?	15
6.	KB GARDENING HACKS	16
6.1.	Gardening in the Biosphere & Fynbos areas	16
7.	MY NEIGHBOURS ARE WILD!	17
8.	PETS IN THE BIOSPHERE	19
9.	BIOSPHERE LIVING: DO'S & DON'TS	19
10.	GET INVOLVED	19
11.	SAVE THE NUMBER	20



Collab Citizen App

Search for the green Collab Citizen icon in Google Play Store, Apple App Store or Huawei App Gallery and download today!

The Collab Citizen app allows users to log and track service requests, report faults, and receive notifications.





SUSTAINABLE DEVELOPMENT GOALS

The United Nations have finalised the United Nations Sustainable Development Cooperation Framework (UNSDCF). The 17 Sustainable Development Goals (SDGs) resulting from the UNSDCF are a global call to action to protect the earth's environment and climate, end poverty and to ensure that people everywhere can enjoy peace and prosperity.



Figure 1. The 17 Sustainable Development Goals

Photo credit: <https://sdgs.un.org/goals>

The 17 Sustainable Development Goals (SDGs) are closely interconnected and without one the other cannot be achieved.

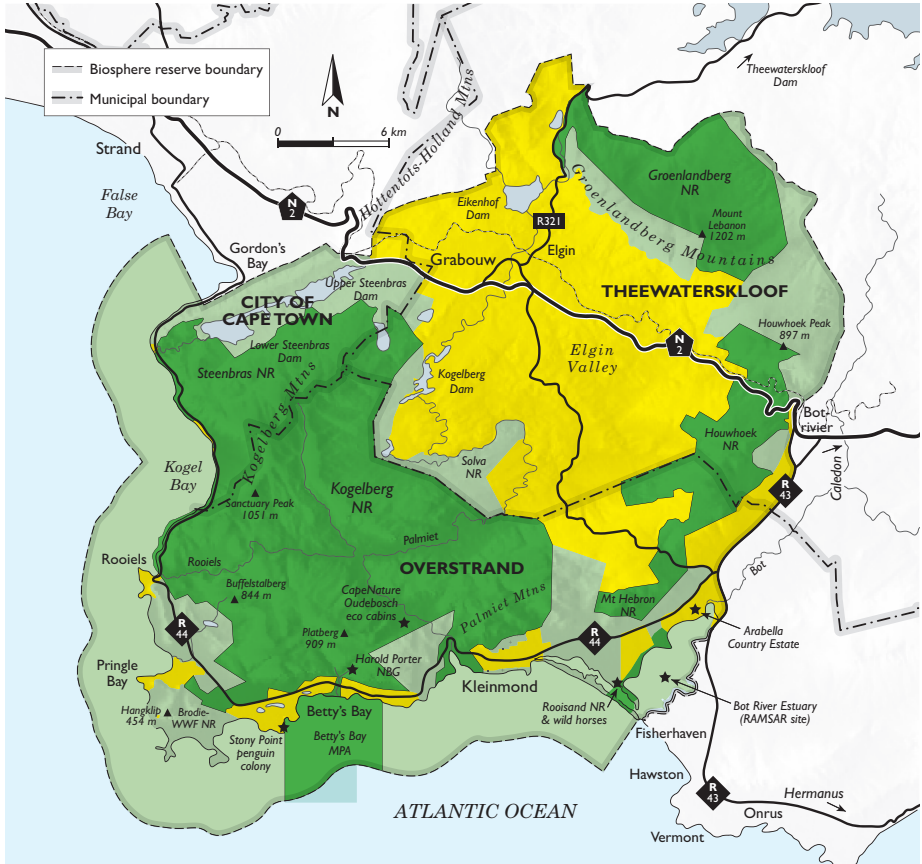
The United Nations defines Sustainable Development as development that meets the needs of the present without compromising the ability of future generations to meet their own needs. For sustainable development to be achieved, we need to harmonise the three core elements of economic growth, social inclusion, and environment protection.

As human populations rise, an increase in the required supporting infrastructure including housing, wastewater treatment plants, waste management areas etc. is unavoidable. All residential properties within the urban areas of the Overstrand are already privately owned and these owners have the right – as much as you do as a property owner – to build a home on their land. We cannot stop development, but we can improve the design and implement newer, greener technologies that embrace modern sustainable design concepts. **Sustainable development** is something we – each and every one of us – must embrace to not only look after our own well-being, but to ensure that the biodiversity we are so privileged to have on our doorstep, is enjoyed by our children's children.

*“Earth provides enough to satisfy every man's needs,
but not every man's greed.” - Mahatma Gandhi*

THE KOGELBERG BIOSPHERE (KB)

The Kogelberg Biosphere (KB), designated by UNESCO in 1998, is South Africa's oldest biosphere reserve. The KB western boundary lies above Gordon's Bay while the eastern boundary is located above Hermanus. The KB includes land, sea, and urban areas along the coastline and covers around 100,000 hectares inland past the town of Botriver and includes the growing economic hub of Grabouw. The KB seeks to reconcile conservation and the protection of biodiversity with sustainable development and economic growth for all.



Kogelberg Biosphere

UNESCO definitions

- Core area**
It comprises a strictly protected zone that contributes to the conservation of landscapes, ecosystems, species and genetic variation.
- Buffer zone**
It surrounds or adjoins the core area(s), and is used for activities compatible with sound ecological practices that can reinforce scientific research, monitoring, training and education.
- Transition area**
The transition area is where communities foster socio-culturally and ecologically sustainable economic and human activities.

Figure 2. The extent of the UNESCO Kogelberg Biosphere
© Kogelberg Biosphere (Liesel Bohdanowicz).

The villages within the Overstrand Municipal Hangklip - Kleinmond Administration fall mostly within the Kogelberg Biosphere (KB) Transitional Zone. The Transitional Zone, as described by The UNESCO Man and the Biosphere Programme (MAB) encourages sustainable development to protect biodiversity and water resources and to restore vital ecosystem services. Healthy ecosystem services within urban settlements play a vital role in supporting the well-being of the people and the quality of ecosystem health both inside and outside of the urban settlement.

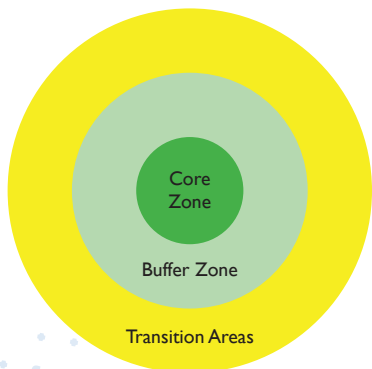


Figure 3. The UNESCO Kogelberg Biosphere has three specific zones:

Core Zone: comprises of a strictly protected area that is managed to effectively contribute to the conservation of landscapes, ecosystems, species, and genetic variation.

Buffer Zone: surrounds the core areas and is used for activities compatible with sound ecological practices that reinforce scientific research, monitoring, training, and education.

Transition Areas: here communities foster socio-cultural and ecologically sustainable economic and human activities.



© Magriet Brink



THINKING OF BUYING?

Before you consider buying, it is recommended that you properly research the area you are considering buying in, after all this could be your home for many years to come.

3.1. The Overstrand Zoning Scheme Regulations

The Overstrand Town Planning Zoning Scheme Regulations describe the various zones and their associated regulations within the Overstrand Municipal area. It is recommended that, before you purchase a property, you first determine what the property zoning allows for and explore the properties around to understand what future developments may occur. The Overstrand Municipality website has a very useful online mapping programme: The [Overstrand Public Viewer](#) is available on the Overstrand website (www.overstrand.gov.za). With the Zoning Layer enabled, you can click on the property of interest and follow the link to the Town Planning Zoning Scheme Regulations. It must be noted that National and Provincial Environmental Legislation overrides Local Bylaws and Policies.

3.2. The Overstrand Environmental Management Overlay Zones (EMOZ)

The Overstrand Environmental Management Overlay Zones (EMOZ, 2020) is an Addendum to the Overstrand Town Planning Scheme. The EMOZ includes areas of Ecological Process Corridors, Urban Conservation Areas, Protected Area Buffers and more. The EMOZ may influence the design of your building plans and informs residents of activities that are prohibited or require council consent within the EMOZ. The EMOZ maps can be viewed on the [Overstrand Public Viewer](#). The EMOZ Regulations can be viewed on the Overstrand website under the Town Planning Strategic Documents webpage.

3.3. Environmental Legislation: The Responsibilities of the Landowner

It is the responsibility of the landowner to determine which environmental laws are applicable to their property and development thereon. The below guidance may not be exclusive, please contact the Overstrand Environmental Management & Conservation Division (EMC) to determine whether there are any relevant laws and/or regulations that you should be aware of before you purchase the property. Please note that existing Title Deeds and for e.g., the Overstrand Zoning Scheme Regulations do not override National or Provincial Environmental Legislation and/or Regulations.



3.4 Wetland Ecosystems

What is a wetland?

A wetland is defined within the National Water Act as:

“land which is transitional between terrestrial and aquatic systems where the water table is usually at or near the surface, or the land is periodically covered with shallow water, and which land in normal circumstances supports or would support vegetation typically adapted to life in saturated soil.”

The Hangklip - Kleinmond area features many wetland ecosystems, ranging from seeps on the mountain slopes, to valley-bottom and floodplain wetlands of the bioregions in the foothills and lowland areas.

Local watercourses, including wetlands are spatially represented under the National Wetland Map 5 layer (Wetland NWM5) on the [Cape Farm Mapper website](#). Alternatively, the NWM5 spatial layers are obtainable from the South African National Biodiversity Institute Biodiversity Geographic Information System (SANBI BGIS) website.

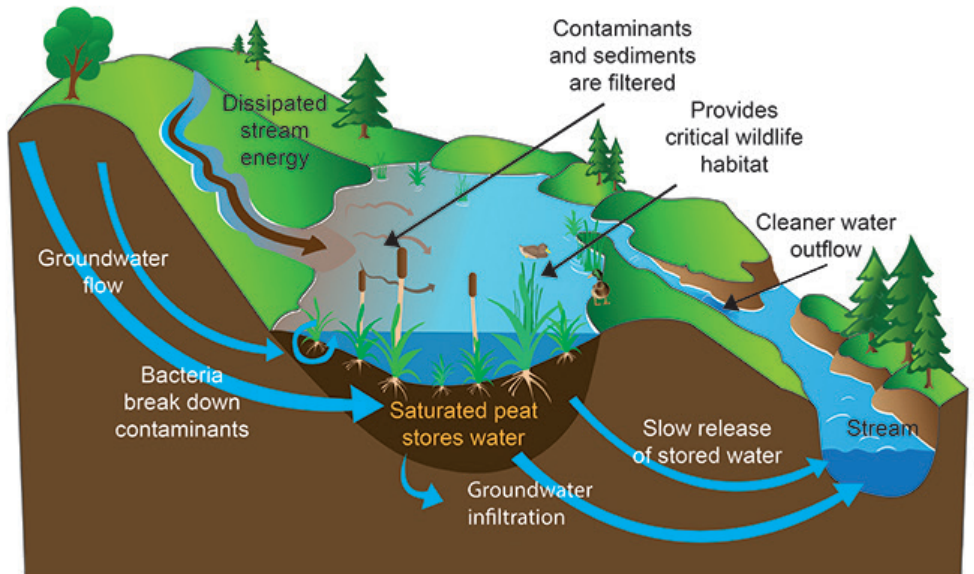


Figure 4. Wonderful Wetlands are “the kidneys of the landscape” that act as filters trapping excess nutrients, bacteria, and sediments and enhancing water quality. Healthy wetlands provide habitats to various plant, amphibian, insect, and animal species. They allow for groundwater recharging, mitigate against floods events and climate change as invaluable carbon sequesters.

The National Water Act (NWA) governs nature resource water use in South Africa. In the Overstrand area, the Breede-Olifants Catchment Management Agency (BOCMA) is the competent authority to the NWA.

In the Hangklip to Kleinmond area, many residential properties are within areas classified as a wetland or has a stream or river on the property. The Overstrand Municipality Environmental Management and Conservation Division (EMC) can assist you in determining whether the property is within a declared wetland or has a watercourse in proximity. It is recommended that should your property be within a wetland a portion of the property is retained as a natural wetland area.

The National Water Act defines a watercourse as:

- (a) a river or spring;
- (b) a natural channel in which water flows regularly or intermittently;
- (c) a wetland, lake or dam into which, or from which, water flows; and
- (d) any collection of water which the Minister may, by notice in the Gazette, declare to be a watercourse, and a reference to a watercourse includes, where relevant, its bed and banks;

Within Section 21 of the NWA, water use includes the following activities that are applicable to new developments in our area. These activities require a Water Use License Application (WULA):

- (c) impeding or diverting the flow of water in a watercourse;
- (i) altering the bed, banks, course or characteristics of a watercourse.

Please contact the Breede-Olifants Catchment Management Agency (BOCMA) for more details on the WULA process: email: info@bgcma.co.za or 023 347 8000/8031

- a) **The National Water Act (Act 36 of 1998)**
- b) **The National Environmental Management Act (NEMA, 1998):
Environmental Impact Assessment (EIA) Regulations (2014, as amended).**

The NEMA EIA Regulations govern activities that may have an impact on our natural resources. The Department of Environmental Affairs and Development Planning (DEA&DP) is the competent authority for these regulations. Generally, properties within the urban area, as defined in the NEMA EIA regulations do not require an EIA or Environmental Authorisation (EA). However, there are some development related activities that may trigger the need for an EA. Owners who submit building plans that are found to require EA will be notified by the Overstrand Municipality Building Control office.

It is extremely important that properties are not cleared with earthmoving machinery prior to the approval of the relevant building plan as this could result in the landowner being in contravention of the NEMA regulations and could be found liable for a hefty fine.



© Magriet Brink

3.5 Western Cape Biodiversity Spatial Plan

The Western Cape Biodiversity Spatial Plan (WCBSP) is a province-wide spatial plan which indicates the biodiversity priority areas which need to be conserved. The WCBSP was developed by CapeNature in collaboration with the DEA & DP. Western Cape is an international biodiversity hotspot, and the Kogelberg Biosphere is acknowledged to have the highest diversity within the hotspot.

The WCBSP is the key informant for biodiversity priorities for all spatial planning and decision making across the province. The Critical Biodiversity Areas (CBAs) are the areas which have been identified as the key areas which need to be conserved. Before purchasing a property, landowners are advised to check the WCBSP to identify the potential constraints to development and to inform the best location for your dwelling/s. The WCBSP has been incorporated into the Overstrand Municipality Spatial Development Framework (SDF), to ensure that biodiversity is hard-wired into spatial planning. The WCBSP can be accessed on [CapeFarmMapper](#) and the [SANBI website](#).

YOU'RE A HOMEOWNER CONGRATULATIONS! NOW WHAT?



© CapeNature

4.1. The Transfer of Sale & Vegetation Management

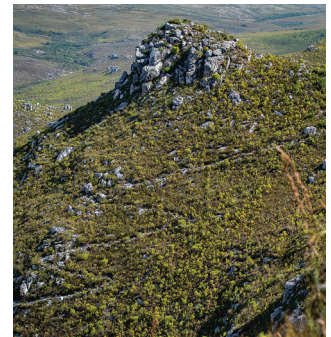
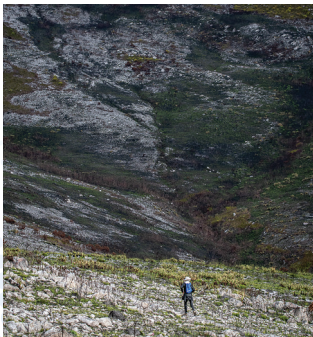
Once you have decided to buy property, in order for the transfer of sale to be approved, the [Overstrand Policy for Creating and Maintaining Firewise Vacant Erven in Urban and Suburban Areas of the Overstrand Municipality](#) must be complied with. It is recommended that the minimum requirements of the policy are adhered to ensure the property is not a fire-risk and ecological infrastructure is retained. The policy does not state that the entire property must be cleared of vegetation and the use of earthmoving machinery is not recommended as this causes the loss of the fynbos seedbank and erosion. Reputable local garden service know the policy well and can achieve compliance without destroying the integrity of the fynbos ecosystem on the property. All alien vegetation must be removed and treated with a suitable herbicide if required. Overstrand Policies and Bylaws can be viewed on the Overstrand Municipality website www.overstrand.gov.za

4.2. Biosphere Building Guidelines

Before the clearance of vegetation by earthmoving machinery or the commencement of construction activities can occur, building plans must be approved by the Kleinmond Building Control Department. It is recommended that local architect and construction companies are utilised as their knowledge of local building regulations can ultimately save you a lot of time and money.

Within wetlands areas, the use of raft-type foundations; stilted or elevated home design is recommended to allow for ground and surface water movement without the risk of structural damage to the building.

Baboon proofing of homes is essential. For advice on how to baboon proof, contact your local Ratepayers Association who can direct you to the baboon alert groups for your area. The baboon action groups are extremely knowledgeable and can guide you on how to cost-effectively fit your home to outsmart the baboons with intelligent design and preventative measures. Baboons use gutter pipes, television antennas and outside light fittings to climb onto roofs. Ensure that these types of installations are securely fitted.





© Magriet Brink



4.3. Waste Management



Baboons & Waste

The Overstrand Integrated Waste Management Bylaw states that approved baboon proof waste containers are mandatory, and residents can be fined for transgressions of the bylaw. For more information on how to baboon proof waste containers, contact the Overstrand Baboon Management Programme.

BABOONS + UNSECURED REFUSE = PROBLEM



Figure 5. Domestic waste containers must be baboon proofed.

Please note: It is illegal to feed baboons or to discharge a firearm of any description in the direction of a baboon.

Reduce, Reuse & Recycle

Household, garden, and recycling waste is collected weekly by the Solid Waste Department. Waste containers may only be put out for collection after 07h00 on the day of collection and not the night before. If you have surplus household waste or are not able to put your waste container out on the morning of collection, your waste bags can be dropped off at the Betty's Bay Library, Pringle Bay village entrance or Kleinmond Waste Transfer Station.

Surplus garden refuse can be dropped at the Betty's Bay Garden Refuse Waste Drop Off or Kleinmond Waste Transfer Station. Garden waste is chipped and removed to Karwyderskraal landfill site for composting. The Overstrand composting and recycling programmes are vital in the Overstrand goal of reducing waste into the landfill.

YES! These go into a clear bag

PAPER / CARDBOARD	GLASS	PLASTICS	CANS
			
Newspapers, magazines, paper, cardboard and boxes	Bottles and jars. <i>No other glass (window panes, windscreens etc)</i>	Cold-drink, water and milk containers, yoghurt and ice-cream containers, bubble wrap, plastic bags	Cold-drink and food cans, deodorant and hairspray cans, cans containing household cleansing aids

NO! These go into a black bag

FOOD WASTE, SCRAPS AND PEELINGS	DISPOSABLE NAPPIES, TOOTHPASTE TUBES	WET OR FOOD-SPOILED PAPER & CARDBOARD	OLD CLOTHING AND SHOES
			

TAKE NOTE: - Only put refuse and recycling bags out before 07:30am of the day of collection, not the day before - Each household is permitted one bin or four bags of household waste (which may only include one bag of garden refuse) - Garden waste, household hazardous waste (paint, thinners, pesticides, etc) and e-waste can be taken to Overstrand drop-off points / transfer stations.

Figure 6. Lets Recycle Right! Do your part to reduce waste to landfill. Remember to only put your waste out on the morning of collection.

4.4. Sewage

Connection to the municipal sewerage line is only available in some areas of Kleinmond. Soak-aways and/or French drains are not permitted. If your property still has a soak-away sewage system, please consider converting to a conservancy tank to reduce contamination of our wetlands and groundwater. Building plans submissions for an addition of a bathroom to existing houses require soak-away systems be replaced with a sealed conservancy tank.

Pre-cast conservancy tanks must be installed with a suction point outside of the property boundary. Sewage removed from conservancy tanks is treated at the Kleinmond Waste-Water Treatment Works (WWTW). Items such as earbuds and sanitaryware should not be flushed as these items put added pressure on the WWTW.

It is recommended that you take note of how long it takes to fill your home conservancy tank to ensure that when you call the Overstrand Municipality Operational Department to book the sewerage truck there is ample time before overflowing occurs. During peak season the waiting period can be up to three days or more.

Contact the Kleinmond Operational Department to request a sewerage tanker: 028 271 8435

THINK BEFORE YOU Flush!



DO NOT FLUSH THE FOLLOWING ITEMS DOWN THE TOILET



COTTON BUDS



WET WIPES



FACIAL WIPES



CLEANSING PADS



TOILET ROLL TUBE



MEDICINES



CIGARETTES



PLASTERS



NAPPIES



The sea starts here...

**HELP KEEP
OUR OCEAN
CLEAN!**



Smaller items that are flushed, such as cotton buds, can escape through treatment filters at the treatment plant & reach our rivers & beaches

Sewage related litter causes harm to the environment and can pollute our water supply and coastlines

WORKING TOGETHER, WE CAN ENSURE EFFECTIVE MAINTENANCE & SAVING COST

- Wipe & scrap plates, pans & utensils before washing
- Collect waste oil in a suitable container
- Maintain your sewer & water pipes inside your yard
- Use strainers in sink-plug holes
- Pour washing/laundry water into toilet sink or basin

- Don't put oil, fat or grease down the drain
- Don't throw objects into manholes, it causes blockages & sewer spillage
- Don't sweep any waste into floor drains
- Don't pour washing/laundry water into storm water drains. It causes smells & health hazards
- Don't connect sewer pipe into storm water pipe. It causes health hazards

2 out of 3 all drain blockages contain sanitary waste

24 HOUR EMERGENCY CONTROL ROOM

028 313 8111 / 028 313 8137

www.overstrand.gov.za | enquiries@overstrand.gov.za



We belong



We care



We serve

Figure 7. Pressure on waste-water treatment works can be reduced by being conscious of what you put into the toilet or down the sink.

4.5. Essential Tips for Building Sustainably

- Clear and level only the minimal required footprint for building. Many properties in the area are underlain by sandy type or highly erosive soils. Clearing only the required area will give you the opportunity to develop your garden slowly over time and reduce the need for non-endemic fast-growing plants that will be required to prevent erosion and/or a sand-filled house from the windy conditions of the area.
- Speak to your architect about raft foundations and intelligent energy design options that reduce water and energy consumption.
- Hot water geysers must be fitted with a solar panel as a supplementary energy source.



© Magriet Brink

4.6. Water Scarcity

Globally, water is a precious and dwindling resource that must be used sparingly. It is now well understood that Climate Change is upon us, and rainfall and temperature patterns in South Africa are rapidly changing. In the Overstrand area, water restrictions are a reality. Potable water in the area is largely sourced from local rivers and groundwater and it is important that this resource is respected and used sparingly.

- If you chose to take water from a natural resource, a water use license application (WULA) must be obtained from the BOCMA.
- Rainwater can be collected from hard surfaces such as roofs or paved areas and piped to a tank. Rainwater is free of charge and can help you save on your monthly municipal bill. Rainwater can be used for irrigation, flushing your toilets, car washing etc.
- Greywater is defined as untreated household wastewater that has not encountered toilet waste. Greywater can be used for garden irrigation and toilet flushing. Greywater can be used for almost all types of plants, but must not be stored longer than 24 hours, the nutrients in it will start to break down, creating bad smells. Greywater may not be allowed to enter stormwater or other natural waterbodies.

4.7. Light Pollution

Wildlife, including plants and insects depends on the Earth's cycle of day and night for breeding, feeding, sleep and protection from predators. 24-hour light interferes with these cycles. The glare from artificial lights can impact wetland habitats that are home to amphibians, such as frogs and toads, whose night-time croaking is part of the breeding ritual. Artificial lights disrupt this nocturnal activity, interfering with reproduction, which reduces populations. Birds that migrate or hunt at night navigate by moonlight and starlight. Artificial lights can cause them to wander off course towards dangerous night-time landscapes of cities.

Reduce light pollution by switching off lights that are not in use, especially outside lights. Make use of downward sloping louvres or so-called "eyelids"; keep exterior lights and their wattage to the minimum.



© Magriet Brink

What will you do when faced with a wall of fire approaching your residential area accompanied by dense smoke, gale force winds, bushes bursting into flames and no fire fighters in sight? Everyone needs to be prepared (have an action plan) in case of wildfire. Start by insuring all your possessions/assets, but also reduce the risk of a fire starting; reduce fire hazards so that it is safe for you to stay and defend your home.

There are several things you can do to safeguard your home:

- A garden, which is well maintained, is beneficial as it reduces the risk of fire and will slow down the intensity of the fire.
- Remove bushes and trees growing near windows, glass panels, doors, wood decks or beams.
- Remove all alien plants, bushes and trees which are fast burning – Port Jackson, rooikrans, black wattle, pampas grass etc.
- Make your garden fire wise by creating fire zones.



© Magriet Brink

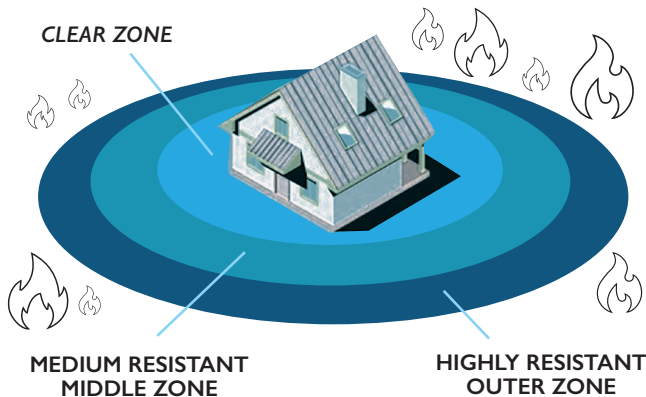


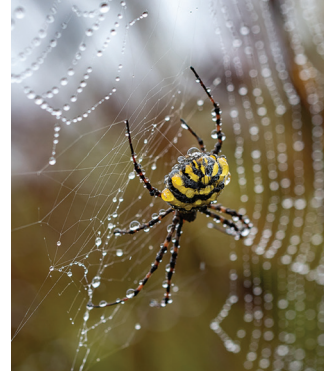
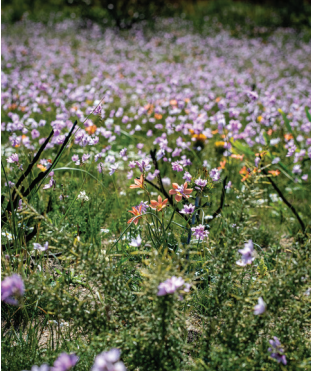
Figure 8. Do's & Don'ts of Firewise Gardening

CLEAR ZONE: Remove large bushes & shrubs as well as climbing or trellised plants. Keep fynbos trimmed to 20cm. Plant groundcover and lawn (avoid invasive kikuyu grass). Remove all dead plant materials

MEDIUM RESISTANT MIDDLE ZONE: Plant mixed tall & short shrubs to reduce fire heat. Plant species like *Brabejum stellaifolium* (wild almond) and *Pelargonium cucullatum* (wild malva).

HIGHLY RESISTANT OUTER ZONE: Plant low-growing species that have high fire resistance for e.g. *Carpobrotus edulis* (sour fig) and *Chrysanthemoides monolifera* (bietou).

6.1. Gardening in the Biosphere & Fynbos areas



© Magriet Brink

The Hangklip – Kleinmond area falls within the Cape Floral Region, an area of exceptional biodiversity that has adapted to thrive in the acidic, nutrient poor soil. Due to the soil and Mediterranean-type climate conditions it is recommended that you consult with the Kogelberg Gardening Circle a wonderful local volunteer group who will be happy to share their knowledge and guide you in the planning and development of your garden.

Many of us wish to have lush green gardens but don't realize the impact this has on our water resources. Create a water-wise garden by planting indigenous trees, and shrubs that are endemic to our area. These plants should be able to survive on rainwater alone once they are established.

Reduce the size of your lawn – keeping lawn green requires a lot of water. Invasive grass species such as kikuyu should not be planted. Provide a thick layer of mulch to reduce evaporation and keep soil cool.

Suitable plants for water-wise gardens:

- Succulent plants – which store water in their thick stems, leaves, or roots.
- Bulbous plants – which survive the dry season by going dormant underground.
- Plants such as *Ericas* have small needle like leaves that minimize surface area and water loss from evaporation.
- Plants with hairy leaves or grey leaves that retain water and reduce heat.

Declared Alien Invasive Plant Species may not be planted and, should they already be on the property you have purchased, require removal as per the National Environmental Management Biodiversity Act Regulations. To determine which plant species are prohibited or require control, please refer to the link provided: <https://invasives.org.za/national-legislation/>



© Magriet Brink



It is important to live in harmony with nature and live a sustainable lifestyle in this area.

Respect wild animals and always keep your distance, do not approach them, and do not remove them from their environment.

Snakes form a key link in the food chain as both predator and prey. Do not kill snakes, instead call a local snake catcher to remove snakes from your home.

Porcupines are attracted by bulbous plants such as arum lilies. Do not plant these types of plants and secure the property with a fence if you do not want porcupines in the garden.

Genet, mongeese, rock hyrax (dassies) and birds may enter roofs that are not properly secured. Seal of entry points to reduce the likelihood of these animals making a family home in your roof.

Baboons frequent the area, and it is important that these animals are not attracted into the urban area by resident's fruit trees and irresponsible waste management.

Human food is not healthy for wild animals as these animals have specialised diets and can become malnourished or die if fed the wrong foods. Animals also cannot distinguish food from wrappers or foil and can get sick eating these items.

Animals that are accustomed to humans often lose their fear of people and can become aggressive if approached. Residents who put food out for wildlife – even birdfeeders – attract baboons to their property. Feeding baboons is a prohibited and punishable offence.

Feeding wild animals can lead to them being at risk of being knocked over on the roads or attacked by domestic pets.

Attracting wild animals to the urban area removes them from their ecological role in nature. Feeding birds domestic seed stops them from pollinating or dispersing seeds in the natural environment.

© Dean Gardiner

*Remember, wild animals do not need to be fed,
it may make you feel good,
but it could mean their death sentence.*



What To Do If You Find A Baby Bird?

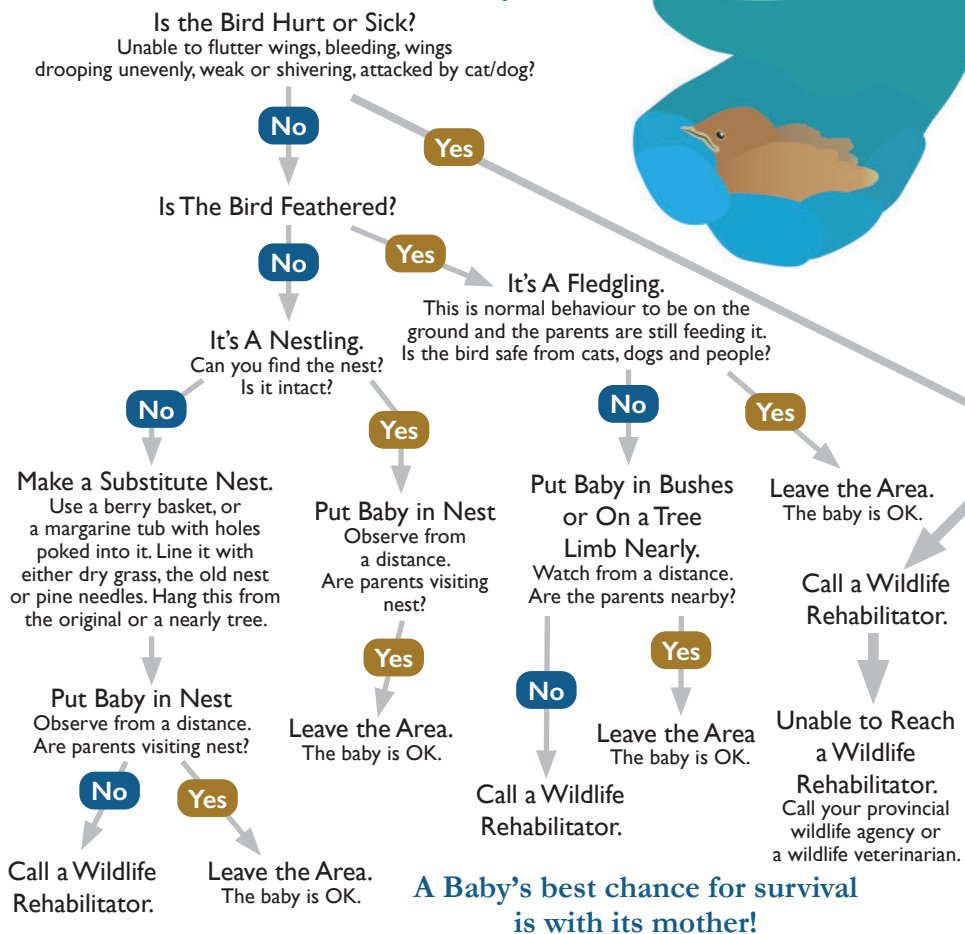
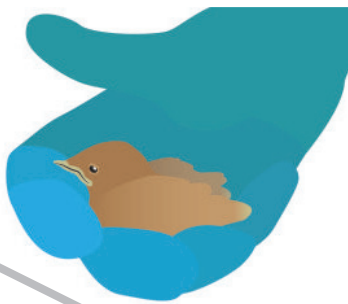


Figure 9. How to help an "abandoned" baby bird.

If you find young animals, particularly in the spring, do not handle them. Mothers often leave young for extended periods to forage. Although the young may appear to be abandoned, the mother will almost certainly return within 24 hours, and handling the young puts them in danger. If you encounter an injured wild animal, contact the Kogelberg Wildlife Rescue Unit for assistance.

How to protect wildlife in the Kogelberg Biosphere area:

- Do not allow wildlife to become reliant on humans for food. Plant fynbos that naturally attracts birds and insects.
- Fruit trees should not be planted. Existing fruit trees must be harvested before the fruit ripens and becomes attractive to wild animals such as baboons.
- Ensure vegetable gardens are baboon proof.
- Cover compost with black building plastic, this speeds up the composting process and removes the attraction to wild animals.
- Feed pets indoors or remove leftover food from outdoor food dishes.

8

PETS IN THE BIOSPHERE

The Kogelberg Biosphere is the heart of the Cape Floral Kingdom. It has the richest, most complex biodiversity on earth, home to more than 1 880 plant species, along with a variety of wildlife like the endangered African penguin, leopard, and micro frog! We need to protect our biodiversity and live in harmony with wildlife.

Dogs must be on a lead and under the control of the owner when in a public place, beach, or mountain trail. Dogs running loose on beaches have a detrimental effect on the eggs of birds that use our beaches to nest. Outdoor domestic cats are one of the largest threats to urban biodiversity. Cats hunt more successfully at night, so bring your cat indoors at night and put a bell on your cat's collar to reduce hunting success.

9

BIOSPHERE LIVING: DO'S & DON'TS

Outdoor braais are great, but must never be left unattended, especially when it is windy. Never walk away from a burning fire - not even for a second - wind can easily spread embers and cause a devastating wildfire. Make sure there are no glowing coals left on your braai. It's a good idea to have a bucket of water or sand handy.

It is illegal to possess or set off any form of firework or flare in the Overstrand.

Balloons are not permitted in Overstrand public open spaces such as beaches, parks or campsites or nature reserves. If you use balloons at a home party, please ensure they are secure and do not leave your property. Please dispose of used balloons responsibly.

Informal pathways from residential houses to beaches and public open space areas cause vegetation disturbance and erosion of our sensitive dune ecosystems. Only use formally signposted pathways and do not walk off these paths. Dune Maintenance Management Programmes are in place for Betty's Bay and Pringle Bay Main Beaches.



© Magriet Brink



10

GET INVOLVED

Volunteer groups do fantastic work in the area and will always welcome your time, skills and/or financial support. The local conservation organizations regularly organize beach clean ups, bird-watching events, guest speaker events, alien invasive vegetation clearing, gardening advice and more! Contact the Hangklip - Kleinmond Tourism Office to be put in touch with the various conservation organizations in the area. [Hangklip - Kleinmond Tourism Office: 028 271 8474.](mailto:Hangklip - Kleinmond Tourism Office)



SAVE THE NUMBER

African Penguin & Seabird Sanctuary (APSS), Gansbaai	072 598 7117
Bee removal	083 225 5695
CapeNature Kogelberg	082 783 8585
Kleinmond Animal Welfare	028 2715004 or 083 516 5535
Kogelberg Biosphere Wildlife Rescue Unit	073 314 0674 or 082 380 9071
Kogelberg Gardening Circle	082 913 3804
Marine Anti-Poaching Unit	060 9072 326
NSRI Kleinmond (Station 42)	063 6992 765
Overstrand Building Control Office	028 271 8427
Overstrand Fire & Rescue	028 312 2400
Overstrand Environmental Management & Conservation Division (Kleinmond)	028 271 8420
Hangklip-Kleinmond Baboon Hotline	069 151 5962
Overstrand Law Enforcement:	028 313 8996
Overstrand Municipal Services	028 313 8111
Overstrand Town Planning Office (Hermanus only)	028 313 8906
Rooisand Horse Watch	083 293 7208
S.A. Marine Mammal Stranding Network	082 746 5579
SANCCOB (Coastal Birds)	021 557 6156
Snake Removal Betty's Bay	083 460 2123
Snake Removal Kleinmond	082 385 1589
Snake Removal Pringle Bay	083 271 8809 or 083 463 9178
Snake Removal Rooiels	082 333 1543 or 082 964 1721
Two Oceans Aquarium (turtle strandings)	021 418 3823

#overstrand4all