



**AGENDA of the  
Portfolio Committee : Municipal Public Safety  
21 October 2025  
(Also the agenda for the Mayoral Committee Meeting : 28 October 2025)**

---

**Discussion**

The Festive Season Plan highlights the operational readiness of the Fire, Rescue & Disaster Management between the festive season which will run between 6 December 2025 and 18 January 2026.

The aim of the festive season plan is to identify, reduce, or prevent incidents from happening and soften the impacts of those incidents that are inevitable.

**7. Financial Implications**

In accordance with the budget provision.

**8. Staff Implications**

None

**9. Comments from other Departments, Divisions and Administrations**

None

**10. Annexures**

Annexure A: Fire, Rescue & Disaster Management 2025 – 2026 Festive Season Plan

**RECOMMENDATION:**

that the Fire, Rescue & Disaster Management 2025 – 2026 Festive Season Plan **be noted**.

**RESPONSIBLE OFFICIAL :**

**L SMITH**

**TARGET DATE FOR IMPLEMENTATION :**

**1 NOVEMBER 2025**





## **FESTIVE SEASON PLAN**

**2025/2026**

## Contents

1.	<b>PURPOSE</b> .....	3
2.	<b>AIM</b> .....	3
3.	<b>OBJECTIVES</b> .....	3
4.	<b>DEFINITIONS</b> .....	3
5.	<b>OVERSTRAND FIRE &amp; EMERGENCY SERVICES ORGANOGRAM</b> .....	4
6.	<b>OVERSTRAND FIRE &amp; EMERGENCY SERVICES FLEET</b> .....	11
7.	<b>SWOT ANALYSIS</b> .....	13
8.	<b>HERMANUS, KLEINMOND &amp; GANSBAAI FIRE STATIONS</b> .....	14
9.	<b>SAFETY AND SECURITY AND CCTV</b> .....	15
10.	<b>DISASTER MANAGEMENT</b> .....	15
11.	<b>FIRE SAFETY</b> .....	16
12.	<b>INCIDENT COMMAND AND EMERGENCY CONTROL</b> .....	16
13.	<b>SENIOR DUTY OFFICER</b> .....	18
14.	<b>CALL OUT PROCEDURES</b> .....	20
15.	<b>FESTIVE SEASON MITIGATION STRATEGY</b> .....	21
16.	<b>POSSIBLE FUNDING IMPLICATIONS &amp; DEVIATION FROM NORMAL SUPPLY CHAIN PROCEDURE DURING EMERGENCIES</b> .....	21

## 1. PURPOSE

The purpose of this strategy is to focus on the management of potential emergency threats.

## 2. AIM

To identify , reduce or prevent incidents from happening and soften the impact of those incidents that are inevitable.

## 3. OBJECTIVES

To improve emergency incidents from happening and soften the impact of those incidents that are inevitable.

## 4. DEFINITIONS

**Disaster:** means a progressive or sudden, widespread or localized, natural or human-caused occurrence which

- a) Causes or threatens to cause
  - i. Death, injury or disease;
  - ii. Damage to property, infrastructure or the environment or;
  - iii. Disruption to the life of a community; and
- b) Is of a magnitude that exceeds the ability of those affected by the disaster to cope with its effects using only their own resources (refer to disaster management)

**Disaster Management:** means a continuous and integrated multi-sectoral, multi-disciplinary process of planning and implementation of measures aimed at:

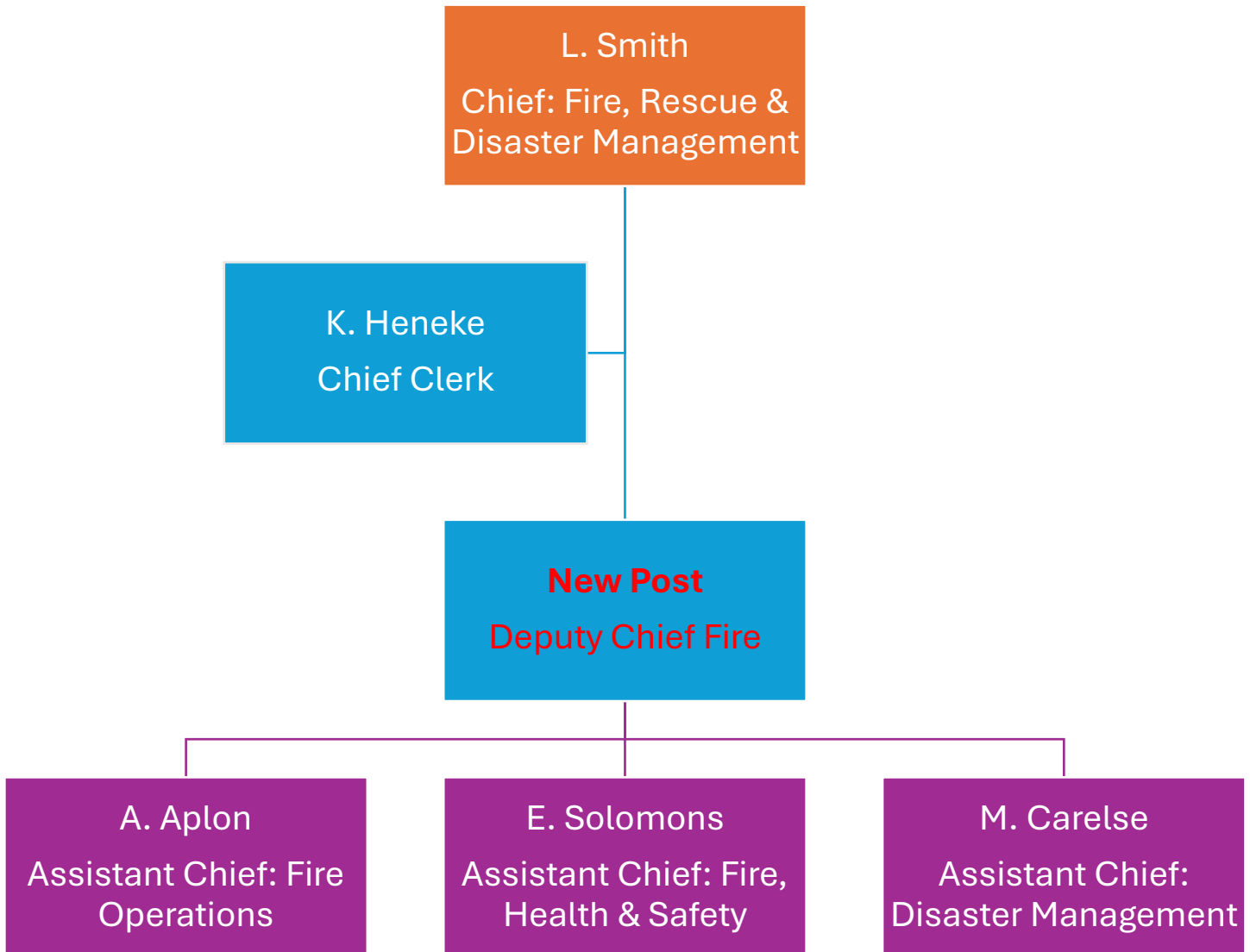
- a) Preventing or reducing the risk of disasters;
- b) Mitigating the severity or consequences of disasters;
- c) Emergency preparedness;
- d) A rapid and effective response to disasters, and
- e) Post-disaster recovery and rehabilitation.

**Major Incident:** means when an emergency requires additional or external resources to bring the situation (**emergency**) under control. Activation of these resources is done by the Chief Fire Officer or Incident Commander after approval is granted by the Director or MM (Municipal Manager)

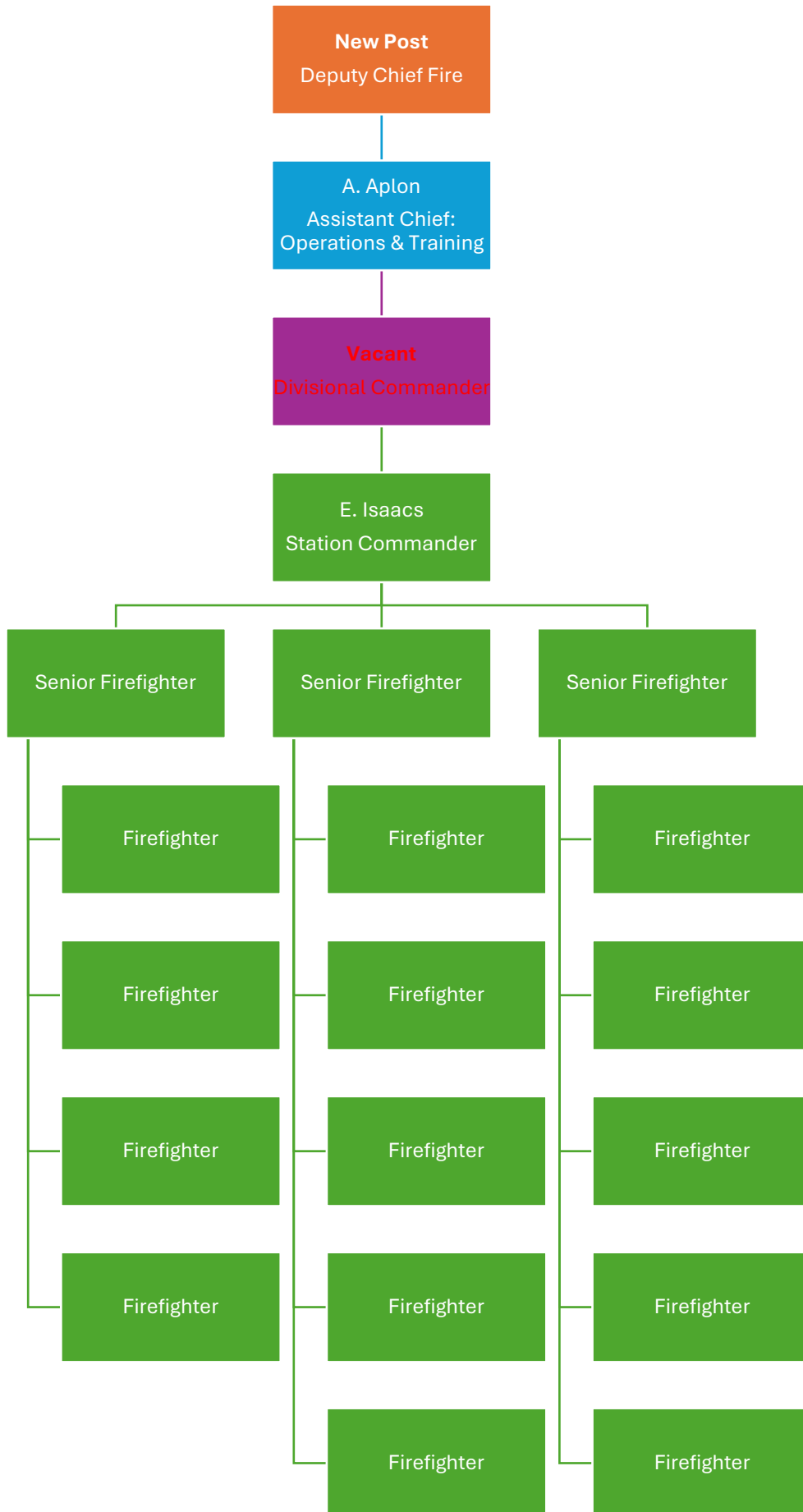
**Emergency:** means situation that poses an immediate risk to life, health, property or the environment and normal procurement procedures cannot be followed.

## 5. OVERSTRAND FIRE & EMERGENCY SERVICES ORGANOGRAM

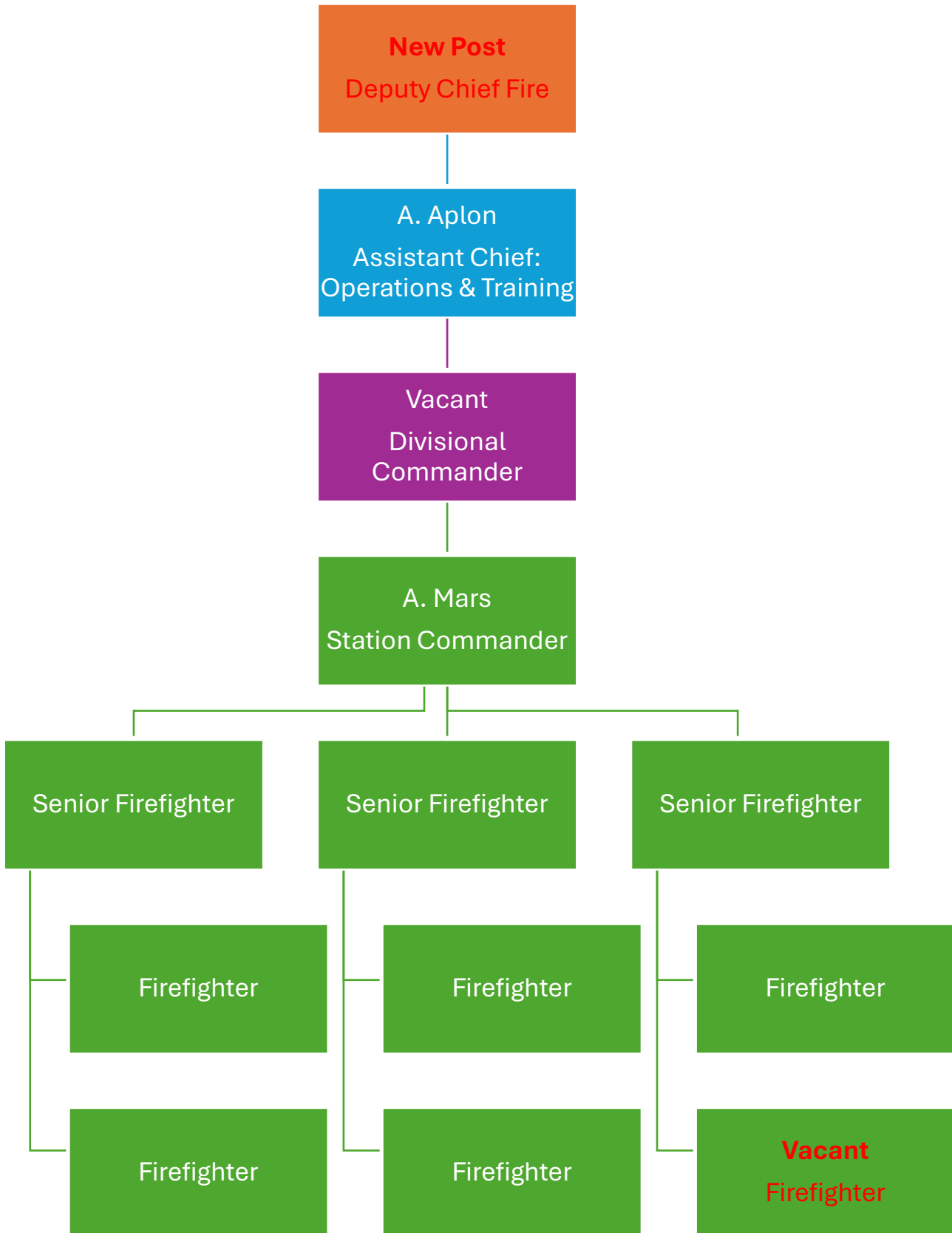
### 5.1. Top Management Team



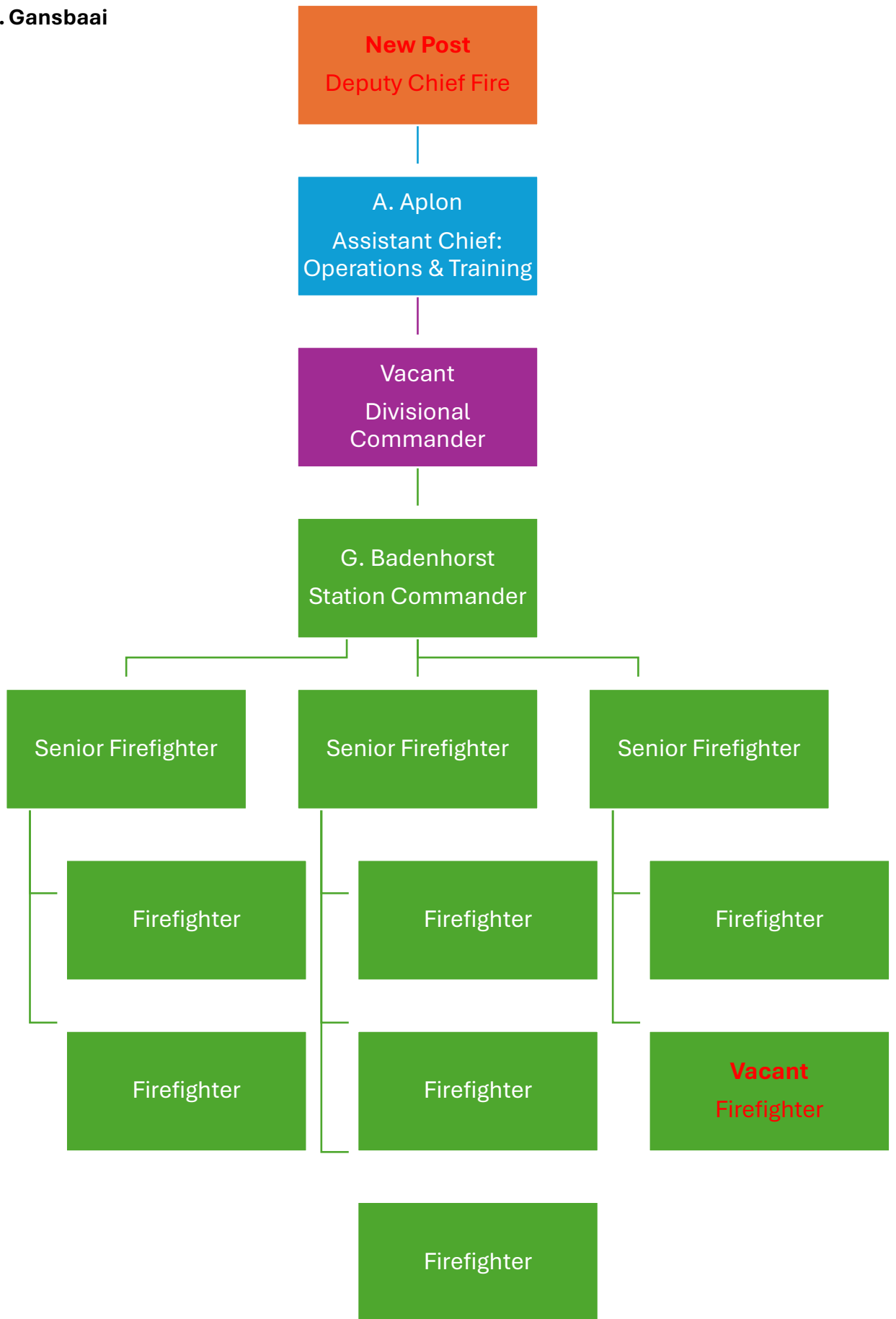
5.2. Hermanus

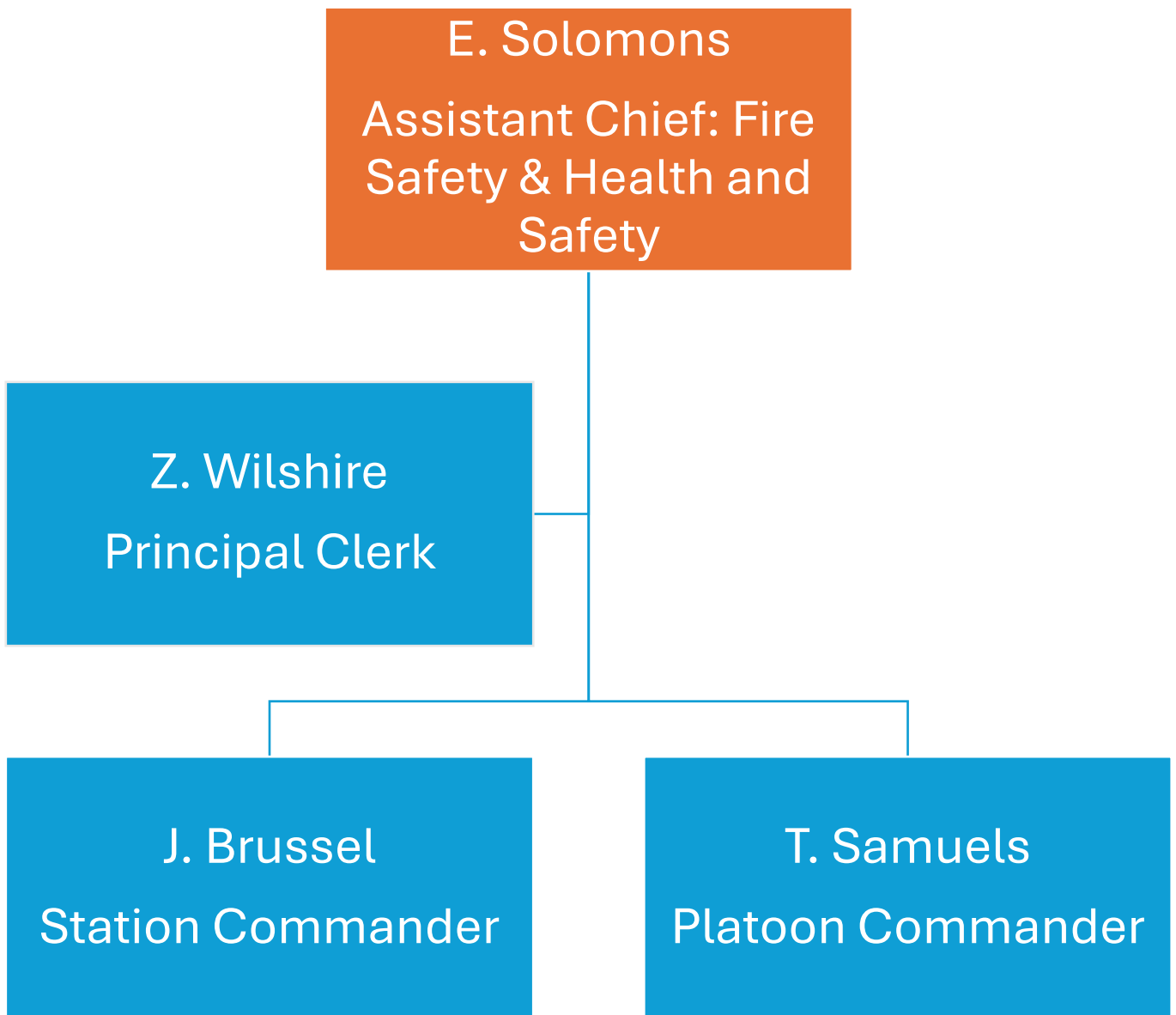


5.3. Kleinmond

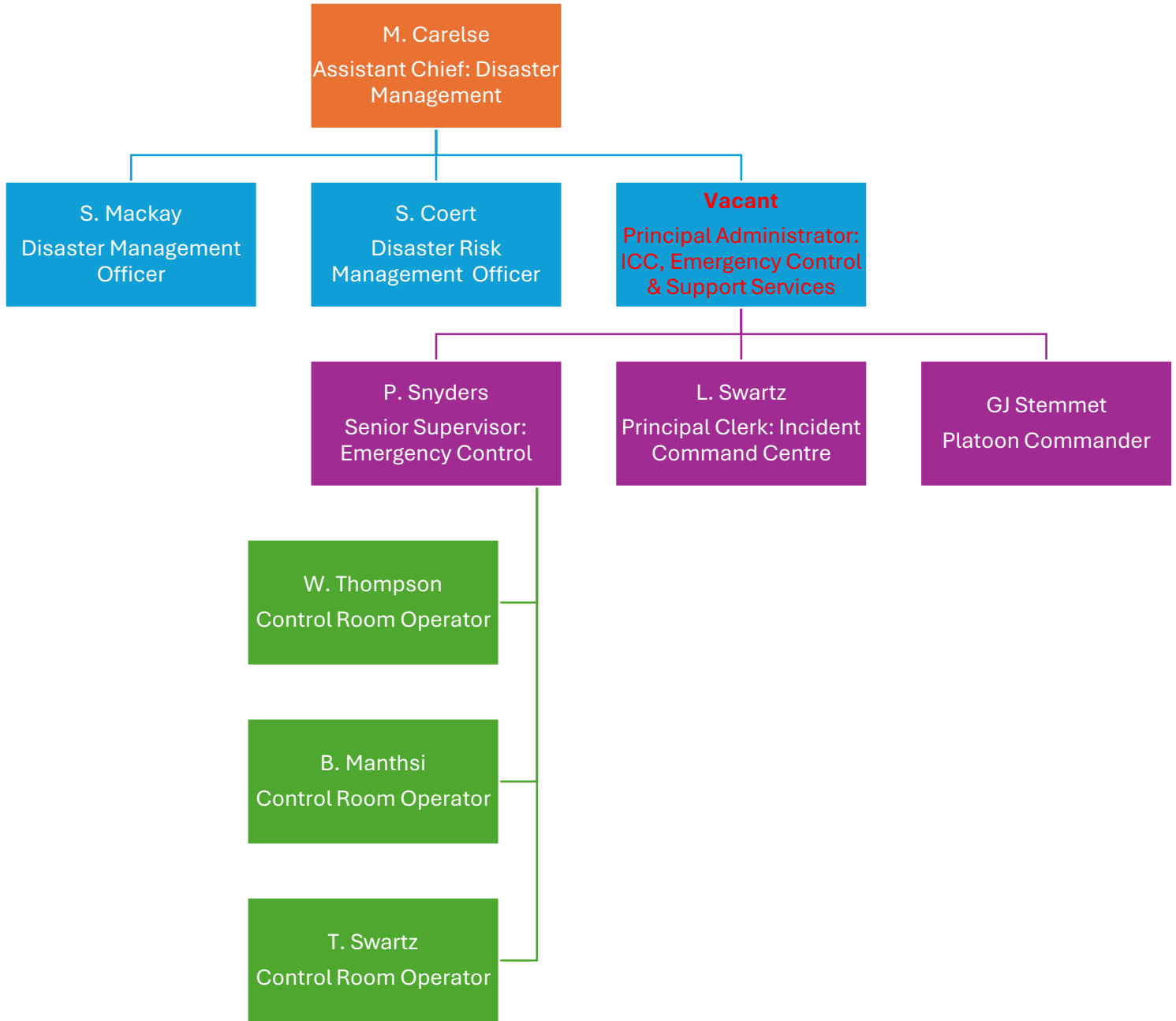


5.4. Gansbaai

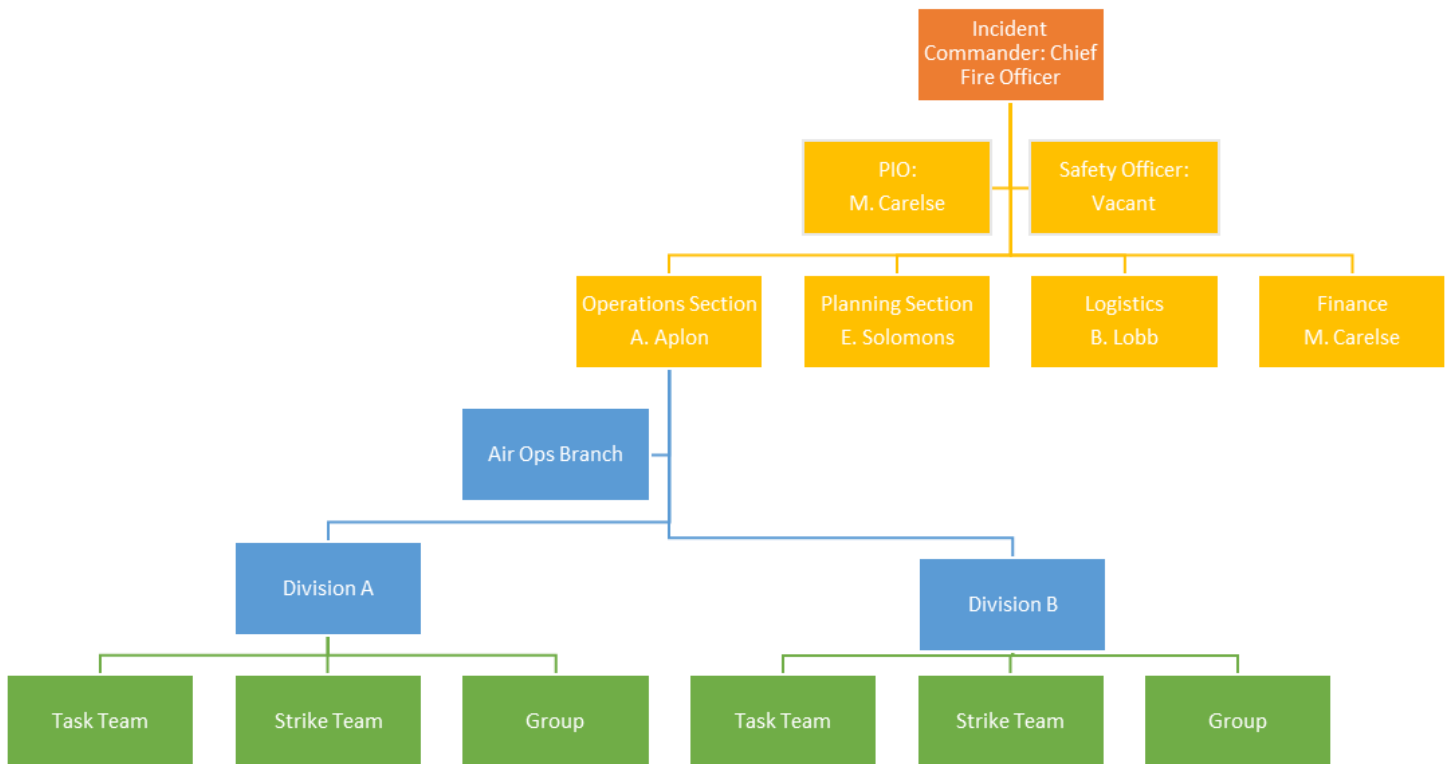


**5.5. Fire Safety**

### 5.6. Disaster Management



**5.7. Proposed Incident Command Structure**



## 6. OVERSTRAND FIRE &amp; EMERGENCY SERVICES FLEET

CALL SIGN	REG NUMBER	STATUS	LOCATION	DESCRIPTION	CLASS	Model Year
<b>COMMAND VEHICLES</b>						
Delta 1	CEM 23400	On run	Hermanus	Nissan Navara 2.5 TD LWB 4X4	Mobile Command Vehicle – Disaster Management	2015
CV 1	CEM 44444	On run	Hermanus	Ford Ranger DC 4X4	Mobile Command Vehicle	2018
CV 2	CEM 21801	On run	Hermanus	Isuzu D Max 1.9	Mobile Command Vehicle	2025
CV 3	CEM 28612	On run	Kleinmond	Isuzu D Max 1.9	Mobile Command Vehicle	2025
CV 4	CEM 21851	On run	Gansbaai	Isuzu D Max 1.9	Mobile Command Vehicle	2025
<b>MAJOR PUMPERS</b>						
Engine 1-1	CEM 37463	On run	Hermanus	Mercedes Benz ATECO 1328	Major Pumper type I	2014
Engine 2-1	CEM 7532	On run	Gansbaai	Iveco (4X4)	Major Pumper type III	2019
Engine 3-1	CEM 10226	On run	Kleinmond	Mercedes Benz ATECO 1328	Major Pumper type III	2009
<b>PUMPERS</b>						
Pump 1	CEM 30714	On run	Hermanus	Toyota Hino 4X4	All Terrain Appliance	2018
Pump 2	CEM 48495	On run	Gansbaai	Isuzu FTS 750	All Terrain Appliance	2019
Pump 3	CEM 2869	On run	Gansbaai	Tata 713C 4X4	All Terrain Appliance	2006
Pump 5	CEM 48493	On run	Hermanus	Isuzu FTS 750	All Terrain Appliance	2019
Pump 6	CEM 1626	On run	Pringle Bay	Mercedes Buffel	All Terrain Appliance	1982
Pump 7	CEM 21426	On run	Kleinmond	Isuzu FTS 750	All Terrain Appliance	2019
<b>WATER TANKERS</b>						
Tanker 1	On run		Hermanus	Isuzu FR 800	Water Tanker	2025
<b>SKID UNITS</b>						
Alpha 1	CEM 44284	On run	Hermanus	Toyota Landcruiser	Skid Unit	2018
Alpha 2	CEM 32828	On run	Stanford	Toyota Landcruiser	Skid Unit	2011
Alpha 3	CEM 28939	On run	Kleinmond/ Pringle Bay	Toyota Landcruiser	Skid Unit	2019
Alpha 4	CEM 12594	On-run	Gansbaai	Ford Ranger Subercab 2.2 4x4	Skid Unit	2020
Alpha 7	CEM 6556	On-run	Kleinmond	Ford Ranger Supercab 2.2 4x4	Skid unit	2020
<b>SUPPORT VEHICLES</b>						
SV01	CEM 38652	OFF Run	Hermanus	Volkswagen Polo ViVo 1.4	Support Vehicle	2015
SV02	CEM 47688	On run	Control Room	Volkswagen Polo Sedan	Support Vehicle	2019
SV03	CEM 42054	On run	Kleinmond	Nissan NP 300	Utility Vehicle	2017
SV04	CEM 30870	On Run	Hermanus	Ford Ranger Single Cab	Utility Vehicle	2019
SV05	CEM 8219	On run	Fire Safety	Ford Ranger XL 4x2 DC	Support Vehicle	2021
SV06	CAM 13012	On run	Betty's Bay	Nissan Hardbody 2.0 4x2 1-ton LDV	Bakkie Unit	2007
SV07	CEM 42270	On run	Control Room	VW POLO SEDSN	Support Vehicle	
SV08	CEM 11565	On run	Hermanus	Ford Ranger XL 4x2 DC	Utility Vehicle	2021
SV09	CEM 13116	On run	Safe & Security	Ford Ranger XL 4x2 DC	Utility Vehicle	2021
SV10	CEM 33893	On run	Safety & Security	VW POLO SEDAN	Utility Vehicle	
SV11	CEM 44285	On run	Safety & Security	Toyota Corrolla	Support Vehicle	

	CEM 14938	OFF run		Toyota Hilux 2.7i 4x4	Utility Vehicle	2006
	CEM 23784	On run		Nissan Hardbody NP300 4X4	Utility Vehicle	2011
<b>TRAILERS</b>						
Tango 1	CAM 4600	On run	Stanford	Trailer – Rope Rescue		
Tango 2	CAM 4601	On run	Stanford	Trailer – Hazmat		
Tango 3	CAM 1266	Off Run	Gansbaai	Trailer – Portable dam		
Tango 4	CEM 3366	On run	Betty's bay	Trailer- Skid unit		
Tango 5	CEM 25651	On run	Baardskeerdersbos	Trailer -Skid Unit		
Tango 6	CAM 30979	On run	Kleinmond	Trailer – SCBA compressor		
Tango 7	CEM 2740	On run	Stanford	Temp ICC ICP/JOC equipment		
NB: Senior Officers must utilize marked municipal vehicles with the necessary radio communication for Command and Control of incidents during major incidents, marked vehicles must also be utilized when communicating with ground resources and aerial support. Municipal or marked vehicles are easily identifiable to the general public. Due to the nature of our inherent fire risk and history of fire related incidents, incident commanders must use municipal vehicles to communicate with other agencies, e.g. WOF, ODM, SAPS, WCEMS etc.						

## 7. SWOT ANALYSIS

### Strengths

- Dynamic Leadership
- In the process of addressing Infrastructure, Vehicles, Personnel, Training
- Strong Organizational Structure
- Command Structure (ICS Principles)
- Disciplined Fire Fighters
- 24/7 Available Fire, Rescue and Disaster Management Service
- Hermanus Fire Station Shift System
- All available Fire Engines will be place at strategic point during New Year's eve celebration and in Mid and Post season from 6 December 2025 until 12 January 2026
  - at Pringle Bay, Rooi Els, Betty's Bay, Kleinmond Main beaches,
  - Grotto Beach, Fisherhaven , Municipal Stores and the Pools at Hawston, as well as
  - Uilenkraalsmond, Stanfordsbaai, Franskraal and Pearly Beach with staff compliment.

### Opportunities

- Each veld fire incident provides an opportunity to reduce fuel (vegetation)
- Festive season period offers a unique opportunity to apply skills and gain experience in the fire, rescue and disaster management environment
- Opportunity to Create an Safe Environment for Communities, Visitors and Tourists

### Weakness

- Limited Infrastructure
- Limited Vehicles (vehicles taken out of service)
- Condition of Vehicles (mechanical failure)
- Limited Equipment
- Condition of Equipment (deteriating equipment)
- Limited Personnel (Man Power)
- One turn out per shift
- Limited Trained Personnel
- Level of Training
- Gansbaai and Kleinmond limited shift system
- Limited Funding

### Threats

#### Fires

- Structural (Formal, Informal, Commercial, Industrial)
- Veld Fires

Motor vehicle/ pedestrian accidents

Boating accidents (Sea/ Lagoon)

Para-glider accidents

Hiking accidents

Drowning accidents (sea, lagoon, swimming pools, rivers)

#### Threat Drivers

Influx of visitors, tourists .

Weather (dry, windy, high temp), Topography (limited access) and Vegetation (age/density/type ect)

Extended Fire Season

Multiple incidents or Extended Fire Rescue and Disaster Incidents

## 8. HERMANUS, KLEINMOND & GANSBAAI FIRE STATIONS

Hermanus, Kleinmond and Gansbaai Fire Stations are currently operating on a 24-hour basis, with shifts commencing at 09:00. The 24-hour shifts came into effect as from 1 July 2022. Each shift consists of at least the following staffing complement:

<b>KLEINMOND</b>	<b>HERMANUS</b>	<b>GANSBAAI</b>
1x Station Commander	1 x Station Commander	1x Station Commander
1 x Senior Firefighter	1 x Senior Firefighter	1 x Senior Firefighter
2 x Firefighter	3 x Firefighter	2 x Firefighter
1 x Contract Firefighter	1 x Contract Firefighter	1 x Contract Firefighter
1 x Chrysalis / EPWP	1 x Chrysalis / EPWP	1 x Chrysalis / EPWP

- 8.1. Three Senior Firefighters and at least six Firefighters will be on duty per 24-hour operational period, this is to render a rapid initial response capability.
- 8.2. Station Commanders will respond to established command and control, and the senior firefighter will assume the role of division or group supervisor.
- 8.3. Fire Operations will be augmented during office hours by a Platoon Commander, 1 x Fire assistant, and 1 x admin support for technical and logistical incident support. All three Fire Stations will be manned by permanent staff 24/7
- 8.4. Incident Management Teams (IMT teams) will also be available and will consist of at least the following: 1 x Senior Officer, 1 x Senior Control operator, 1 x Fire Safety Official, 1 x Disaster Management official, and 1 x Operational Support. Their sole mandate is Incident Management. They will open and manage the Incident Command Post (ICP) for the duration of the incident. They will be responsible for the liaison between all the different role players.
- 8.5. Off-duty staff will be on a rotational standby roster, at any given time, with at least four additional firefighters and one supervisor on standby per day.
- 8.6. Reservist Firefighters will also be on duty on a rotational roster.
- 8.7. A Brigade Call-out can be instructed for all off-duty firefighters.
- 8.8. All available fire engines will be placed at strategic points during the festive season and New Year's Eve celebrations from 6 December 2025 until 12 January 2026.

## 9. SAFETY AND SECURITY AND CCTV

- 9.1. As the division only consists of 2 (two) permanent officials, the day to day operations are conducted by temporary staff (Chrysalis Interns). All temporary staff report to the Senior Inspector: Law Enforcement and CCTV.
- 9.2. Safety and Security and CCTV consist of the Public Safety Officer, CCTV Controller and Access Controller. Public Safety Officers will rotate as per the strategic points identified during the festive season and New year's Eve celebrations from 6 December 2025 until 8 January 2026.
- 9.3. The Public Safety Officers will assist the Fire division at incidents by assisting with crowd control and logistical arrangements. The Public Safety Officers will assist the Law Enforcement division with any operational grid plans as needed and conduct regular inspections at municipal sites, issue fines to transgressors enforcement of municipal by-laws.
- 9.4. A motivation will be submitted to the Director: Directorate: Municipal Public Safety as and when the need arise to bring in additional temporary staff on overtime.
- 9.5. Public Safety Officers and CCTV Controllers are currently working 12-hours per day, with shifts commencing at 06:00 and ends at 18:00. Access Controllers operate as per the norm according to day workers (Monday– Thursday 07:45 till 16:30, Fridays 07:45 till 15:15, excluding public holidays).
- 9.6. The 12-hour roster for Safety and Security is rostered on the CAD (Computer Aided Dispatch)
- 9.7. Refer to the Senior Duty Roster for standby officials (permanent).

## 10. DISASTER MANAGEMENT

- 10.1. Disaster Management operates as per the norm according to day workers (Monday – Thursday 07:45 till 16:30, Fridays 07:45 till 15:15, excluding public holidays).
- 10.2. Disaster Management officers will be activated to assist at extended wildfire attacks, structural fires (specifically backyard and informal dwellings), severe weather warnings and social distress incidents, amongst other.
- 10.3. A motivation will be submitted to the Director: Directorate: Municipal Public Safety as and when the need arise to bring in temporary staff on overtime.
- 10.4. Refer to the Senior Duty Roster for standby officials (permanent)

## 11. FIRE SAFETY

- 11.1. Fire Safety operates as per the norm according to day workers (Monday–Thursday 07:45 till 16:30, Fridays 07:45 till 15:15, excluding public holidays).
- 11.2. Fire Safety officers will be activated to assist at extended attacks, may be called to assist at structural fires (specifically backyard and informal dwellings), severe weather warnings and social distress, amongst other.
- 11.3. Fire Safety officers may particularly be activated after hours to assist Law Enforcement Agencies with compliance at liquor establishments such as bars and taverns (both legal and illegal), and any other establishment as deemed to have the need for fire safety compliance.
- 11.4. A motivation will be submitted to the Director: Directorate: Municipal Public Safety as and when the need arise to bring in temporary staff on overtime.
- 11.5. Refer to the Senior Duty Roster for standby officials (permanent).

## 12. INCIDENT COMMAND AND EMERGENCY CONTROL

- 12.1. The Incident Command Centre is still in renovation phase and is subject to completion due to budget availability. In the event of a major incident or disaster a temporary facility will be established.
- 12.2. The division only consists of 3 (three) permanent officials, the day-to-day operations are conducted by temporary staff. All temporary staff report to the Principal Administrator: Incident Command Centre, Emergency Control & Support Services.
- 12.3. During the festive season 2 Emergency Control Room Operators must be on duty to deal with the high volume of calls due to the anticipated influx of visitors into Overstrand (increase in population up to 50% as per the 2025/2026 Disaster Management Plan)
- 12.4. The Emergency Control Room receives all calls for the Directorate: Directorate: Municipal Public Safety and transfers to the relevant department or dispatches the necessary crew or officers.
- 12.5. The Emergency Control Room operates on a 24-hour basis, with 12-hour shifts commencing at 06:00.
- 12.6. A motivation will be submitted to the Director: Directorate: Municipal Public Safety as and when the need arise to bring in temporary staff on overtime

(operators can be utilized for the emergency control room or when there is an extended wildfire occurring as part of the logistics team)

- 12.7. The 12-hour roster for Incident Command and Emergency Control is rostered on the CAD (Computer Aided Dispatch)
- 12.8. Refer to the Senior Duty Roster for standby officials (permanent)

**13. SENIOR DUTY OFFICER**

Assistant Chief Fire Officer or his delegate will be available during office hours. A Senior Officer will be on standby after hours and on weekends. Refer to the shift roster from December 2025 – January 2026.

# December

# 2025

Monday	Tuesday	Wednesday	Thursday	Friday	Saturday	Sunday
1 Stemmet, Justin, Meagan, Sarolyn, Isaacs, Gallie (Senior)	2 Stemmet, Justin, Meagan, Sarolyn, Isaacs, Gallie (Senior)	3 Stemmet, Justin, Meagan, Sarolyn, Isaacs, Gallie (Senior)	4 Stemmet, Justin, Meagan, Sarolyn, Isaacs, Gallie (Senior)	5 Stemmet, Justin, Meagan, Sarolyn, Isaacs, Gallie (Senior)	6 Stemmet, Justin, Meagan, Sarolyn, Isaacs, Gallie (Senior)	7 Stemmet, Justin, Meagan, Sarolyn, Isaacs, Gallie (Senior)
8 Aplon (Senior), Mars, Turlo, Shaun, Pat, Jade, Esric	9 Aplon (Senior), Mars, Turlo, Shaun, Pat, Jade, Esric	10 Aplon (Senior), Mars, Turlo, Shaun, Pat, Jade, Esric	11 Aplon (Senior), Mars, Turlo, Shaun, Pat, Jade, Esric	12 Aplon (Senior), Mars, Turlo, Shaun, Pat, Jade, Esric	13 Aplon (Senior), Mars, Turlo, Shaun, Pat, Jade, Esric	14 Aplon (Senior), Mars, Turlo, Shaun, Pat, Jade, Esric
15 Stemmet, Justin, Meagan, Lucia, Isaacs, Gallie, Chief(Senior),	16 Stemmet, Justin, Meagan, Lucia, Isaacs, Gallie (Senior), Chief	17 Stemmet, Justin, Meagan, Lucia, Isaacs, Gallie (Senior) Chief	18 Stemmet, Justin, Meagan, Lucia, Isaacs, Gallie (Senior), Chief	19 Stemmet, Justin, Meagan, Lucia, Isaacs, Gallie (Senior), Chief	20 Stemmet, Justin, Meagan, Lucia, Isaacs, Gallie (Senior), Chief	21 Stemmet, Justin, Meagan, Lucia, Isaacs, Gallie (Senior) , Chief
22 Aplon (Senior), Mars, Turlo, Shaun, Pat, Jade, Esric	23 Aplon (Senior), Mars, Turlo, Shaun, Pat, Jade, Esric	24 Aplon (Senior), Mars, Turlo, Shaun, Pat, Jade, Esric	25 Aplon (Senior), Mars, Turlo, Shaun, Pat, Jade, Esric	26 Aplon (Senior), Mars, Turlo, Shaun, Pat, Jade, Esric	27 Aplon (Senior), Mars, Turlo, Shaun, Pat, Jade, Esric	28 Aplon (Senior), Mars, Turlo, Shaun, Pat, Jade, Esric
29 Stemmet, Justin, Meagan, Sarolyn, Isaacs, Gallie (Senior)	30 Stemmet, Justin, Meagan, Sarolyn, Isaacs, Gallie (Senior)	31 Stemmet, Justin, Meagan, Sarolyn, Isaacs, Gallie (Senior)				

## Events

- 16 Dec – Day of Reconciliation
- 25 Dec – Christmas Day
- 26 Dec – Boxing Day

# January

# 2026

Monday	Tuesday	Wednesday	Thursday	Friday	Saturday	Sunday
			1 Stemmet, Justin, Meagan, Sarolyn, Isaacs, Gallie (Senior)	2 Stemmet, Justin, Meagan, Sarolyn, Isaacs, Gallie (Senior)	3 Stemmet, Justin, Meagan, Sarolyn, Isaacs, Gallie (Senior)	4 Stemmet, Justin, Meagan, Sarolyn, Isaacs, Gallie (Senior)
5 Aplon (Senior), Mars, Turlo, Shaun, Pat,	6 Aplon (Senior), Mars, Turlo, Shaun, Pat,	7 Aplon (Senior), Mars, Turlo, Shaun, Pat, Jade, Esric	8 Aplon (Senior), Mars, Turlo, Shaun, Pat,	9 Aplon (Senior), Mars, Turlo, Shaun, Pat,	10 Aplon (Senior), Mars, Turlo, Shaun, Pat,	11 Aplon (Senior), Mars, Turlo, Shaun, Pat,
12 Stemmet, Justin, Meagan, Lucia, Isaacs (Senior), Gallie, Chief	13 Stemmet, Justin, Meagan, Lucia, Isaacs (Senior), Gallie, Chief	14 Stemmet, Justin, Meagan, Lucia, Isaacs (Senior), Gallie, Chief	15 Stemmet, Justin, Meagan, Lucia, Isaacs (Senior), Gallie, Chief	16 Stemmet, Justin, Meagan, Lucia, Isaacs (Senior), Gallie, Chief	17 Stemmet, Justin, Meagan, Lucia, Isaacs (Senior), Gallie, Chief	18 Stemmet, Justin, Meagan, Lucia, Isaacs (Senior), Gallie, Chief
19 Aplon (Senior), Mars, Turlo, Shaun, Pat, Jade, Esric	20 Aplon (Senior), Mars, Turlo, Shaun, Pat, Jade, Esric	21 Aplon (Senior), Mars, Turlo, Shaun, Pat, Jade, Esric	22 Aplon (Senior), Mars, Turlo, Shaun, Pat, Jade, Esric	23 Aplon (Senior), Mars, Turlo, Shaun, Pat, Jade, Esric	24 Aplon (Senior), Mars, Turlo, Shaun, Pat, Jade, Esric	25 Aplon (Senior), Mars, Turlo, Shaun, Pat, Jade, Esric
26 Stemmet, Justin, Meagan, Sarolyn, Isaacs (Senior), Gallie	27 Stemmet, Justin, Meagan, Sarolyn, Isaacs (Senior), Gallie	28 Stemmet, Justin, Meagan, Sarolyn, Isaacs (Senior), Gallie	29 Stemmet, Justin, Meagan, Sarolyn, Isaacs (Senior), Gallie	30 Stemmet, Justin, Meagan, Sarolyn, Isaacs (Senior), Gallie	31 Stemmet, Justin, Meagan, Sarolyn, Isaacs (Senior), Gallie	

1 Jan – New Year

## Events

## 14. CALL OUT PROCEDURES

All Emergency Incidents must be reported to the Emergency Control Centre (Control)



Control will capture the information on CAD system.



Activate the on-duty crew and inform the on-duty officer.



The on-duty station commander will request additional assistance and an IMT team if needed.

The Incident Commander (IC) must remain in contact with the on-duty Officer (if the on-duty station commander is not on scene). The IC must remain in communication with the Control Centre and post regular updates on the FDS WhatsApp group. The updates/sitreps must include the following:

**Exact location – grid reference or GPS**

**Type of incident (size and severity)**

**Hazards – present and potential**

**Access to the scene**

**Injuries/ Damages (Number and severity of casualties or structures (estimated))**

**Emergency and other services are present and required**



The duty officer must inform the CFO, Director, MM, etc.

The following procedures for additional resources:

Air or ground Support request (on emergency) from Chief Fire Officer/ Incident Commander to Directorate: Municipal Public Safety/ MM for approval or approval for overspending. On approval, the chief Fire Officer /Incident Commander will contact district or provincial fire management to dispatch requested resources to the location and manage these resources and keep the Director/ MM informed.

All air and ground support after the necessary approval, resources can be requested via dispatch.

060 961 8847

082 312 9507

#### **15. FESTIVE SEASON MITIGATION STRATEGY**

- 24 hours a day, firefighters will be ready to respond to any fire call
- Fresh crew will be available at least every 24 hours
- All available fire engines will be placed at strategic points during New Year's Eve celebrations and mid and post-season from 6 December 2025 until 18 January 2026.

#### **16. POSSIBLE FUNDING IMPLICATIONS & DEVIATION FROM NORMAL SUPPLY CHAIN PROCEDURE DURING EMERGENCIES**

- Additional shifts from 06 December 2025 until 18 January 2026 to man strategic points (16, 24, 25, 26, & 31 December 2025 and 01-02 January 2026)
- After-hours/ weekend working for Fire resources (Western Cape Province)
- Additional overtime and standby for Senior officer and Firefighter (extended incidents)
- Food rations (extended incidents or on request of Chief Fire Officer/Incident Commander)
- Transport for Working for Fire Personnel
- Additional logistical support from Overstrand municipal departments and other external resources
- Fire suppressing Support (Aerial)