



**AGENDA of the  
Portfolio Committee : Municipal Public Safety  
21 October 2025  
(Also the agenda for the Mayoral Committee Meeting : 28 October 2025)**

---

**Discussion**

The plan highlights the operational readiness and response to incidents as and when the need arise.

**7. Financial Implications**

In accordance with budget provision.

**8. Staff Implications**

None

**9. Comments from other Departments, Divisions and Administrations**

None

**10. Annexures**

Annexure A: Fire, Rescue & Disaster Management 2025 – 2026 Fire Season Plan

**RECOMMENDATION:**

that the Fire, Rescue & Disaster Management 2025 – 2026 Fire Season Plan **be noted.**

**RESPONSIBLE OFFICIAL :**

**L SMITH**

**TARGET DATE FOR IMPLEMENTATION :**

**1 NOVEMBER 2025**





# **FIRE SEASON PLAN**

**2025/2026**

## Table of Contents

<b>List of abbreviations</b> .....	3
<b>List of figures</b> .....	3
<b>List of charts</b> .....	3
SECTION A.....	4
<b>1. Definitions</b> .....	4
SECTION B.....	7
<b>2. Purpose of the plan</b> .....	7
<b>3. Aim of the Fire Season Plan</b> .....	7
<b>4. Objectives during the Fire Season</b> .....	7
<b>5. Functions during large incidents</b> .....	7
SECTION C .....	8
<b>6. Command and Control / Incident Support Senior Officials</b> .....	8
<b>7. Organogram: Top Management Team</b> .....	9
<b>8. Organogram: Disaster Management Team</b> .....	9
<b>9. Organogram: Operations Team</b> .....	10
<b>10. Organogram: Fire Safety Team</b> .....	13
<b>12. Proposed Incident Command Structure during emergencies</b> .....	14
SECTION D .....	16
<b>13. Operational working hours</b> .....	16
<b>14. Shift roster November 2025</b> .....	19
<b>15. Shift roster December 2025</b> .....	20
<b>16. Shift roster January 2026</b> .....	21
<b>17. Shift roster February 2026</b> .....	22
<b>18. Shift roster March 2026</b> .....	23
<b>19. Shift roster April 2026</b> .....	24
<b>20. Shift roster May 2026</b> .....	25
SECTION E.....	26
<b>21. Vehicles and appliances</b> .....	26
<b>22. Provincial Fire and Disaster Management Assistance (Depending on Provincial &amp; District Requirements)</b> .....	27
<b>Questions to ask before calling the helicopters</b> .....	30
<b>23. SWOT analysis</b> .....	31

SECTION F.....	32
<b>24. Pro-active activities .....</b>	<b>32</b>
<b>25. Overstrand Environmental Management &amp; Conservation.....</b>	<b>40</b>
<b>26. Strategic Policy .....</b>	<b>40</b>
<b>27. Integrated Prescribed Burns .....</b>	<b>41</b>
<b>28. Greater Overberg Fire Protection Association .....</b>	<b>41</b>
<b>29. Overberg District Municipality and Disaster Management .....</b>	<b>41</b>
SECTION G .....	43
<b>30. Overstrand municipal area fire risks.....</b>	<b>43</b>
<b>31. Top fire risks.....</b>	<b>44</b>
SECTION H .....	49
<b>32. Emergency contact numbers .....</b>	<b>49</b>

### List of abbreviations

CAD	: Computer Aided Dispatch
FMU	: Fire Management unit
GOFPA	: Greater Overberg Fire Protection Association
IAP	: Incident Action Plan
IC	: Incident Command
ICS	: Incident Command System
ICS	: Incident Command System
IMT	: Incident Command Team
JOC	: Joint Operations Centre
MM	: Municipal Manager
ODM	: Overberg District Municipality
PIO	: Public Information Officer
UC	: Unified Command

### List of figures

Figure 1	: Pringle Bay
Figure 2	: Kogelberg entrance
Figure 3	: Berghoff – Camphill
Figure 4	: Stanford to De Kelders to Avuka Road
Figure 5	: Wortelgat – Sopies Klip
Figure 6	: Franskraal to Pearly Beach

### List of charts

Chart 1	: Burn permit inspections
Chart 2	: Plot Clearing inspections
Chart 3	: Building License inspections
Chart 4	: Event inspections
Chart 5	: Early Childhood Development inspections
Chart 6	: Population Certificates issued
Chart 7	: Flammable Storage inspections
Chart 8	: Building Plan screening
Chart 9	: Town Planning Application screening
Chart 10	: Compliance certificate
Chart 11	: Consultation inspections
Chart 12	: Dangerous goods
Chart 13	: Fire Hydrant inspections

## SECTION A

### 1. Definitions

- 1.1. **Branch:** means the organization level having functional, geographical, or jurisdictional responsibility for major parts of the incident operations. The branch level is organizationally between Section and Division / Group in the Operations Section. And between Section and Units in the Logistics Section. Branches are identified by the use of Roman Numerals, by function, or by jurisdictional name.
- 1.2. **Command staff:** means the Command Staff which consists of the Public Information Officer, Safety Officer, and Liaison Officer. They report directly to the Incident Commander. They may have an Assistant or Assistants as needed.
- 1.3. **Disaster:** means a progressive or sudden, widespread or localized, natural or human-caused occurrence which
- a) Causes or threatens to cause
    - i. Death, injury or disease;
    - ii. Damage to property, infrastructure or the environment or;
    - iii. Disruption to the life of a community; and
  - b) Is of a magnitude that exceeds the ability of those affected by the disaster to cope with its effects using only their own resources (refer to disaster management)
- 1.4. **Disaster Management:** means a continuous and integrated multi-sectoral, multi-disciplinary process of planning and implementation of measures aimed at:
- a) Preventing or reducing the risk of disasters;
  - b) Mitigating the severity or consequences of disasters;
  - c) Emergency preparedness;
  - d) A rapid and effective response to disasters, and
  - e) Post-disaster recovery and rehabilitation.
- 1.5. **Division:** means the system which is used to divide an incident into geographical areas of operation. A division is located within the ICS organization between the Branch and the Task Force/Strike Team (see Group). Divisions are identified by alphabetic characters for horizontal applications and, often, by floor numbers when used in buildings.
- 1.6. **Emergency:** means situation that poses an immediate risk to life, health, property or the environment and normal procurement procedures cannot be followed.

- 1.7. **Group:** means groups established to divide the incident into functional areas of operation. Groups are composed of resources assembled to perform a special function not necessarily within a single geographic division (see Division). Groups are located between Branches (when activated) and Resources in the Operations Section
- 1.8. **Incident Command System:** means a standardized on-scene emergency management construct specifically designed to provide for the adoption of an integrated organizational structure that reflects the complexity and demands of single or multiple incidents, without being hindered by jurisdictional boundaries. ICS is the combination of facilities, equipment, personnel, procedures, and communications operating within a common organizational structure, designed to aid in the management of resources during incidents. It is used for all kinds of emergencies and is applicable to small as well as large and complex incidents. ICS is used by various jurisdictions and functional agencies, both public and private, to organize field-level incident management operations.
- 1.9. **Incident Command Team (IMT):** means the Incident Commander and appropriate Command and General Staff personnel assigned to an incident.
- 1.10. **Major Incident:** means when an emergency requires additional or external resources to bring the situation (**emergency**) under control. Activation of these resources is done by the Chief Fire Officer or Incident Commander after approval is granted by the Director or MM (Municipal Manager)
- 1.11. **Section:** means the organizational level responsibility for a major functional area of incident management, eg Operations, Planning, Logistics, Finance/Administration, and Intelligence (if established).
- 1.12. **Single Resource:** means an individual, a piece of equipment and its personnel complement, or a crew or team of individuals with an identified work supervisor that can be used on an incident.
- 1.13. **Strike Team:** means a specified combination of the same kind and type of resource, with common communications and a leader.
- 1.14. **Task Force:** means a combination of single resources assembled for a particular tactical need with common communications and a Leader.
- 1.15. **Unit:** means the organizational element having functional responsibility for a specified incident panning, logistics, of finance/administration activity.

- 1.16. **Wildland Urban Interface:** means the location from where homes and structures are build amongst forest, shrubs or grassland (Radeoff et al. 2005)

## SECTION B

### **2. Purpose of the plan**

To focus on the management of potential emergency threats.

### **3. Aim of the Fire Season Plan**

To identify, reduce or prevent incidents from happening and soften the impact of those incidents that are inevitable.

### **4. Objectives during the Fire Season**

To improve emergency preparedness in vulnerable communities and ensure appropriate response to emergencies and disaster within the Overstrand Municipality.

### **5. Functions during large incidents**

The call-out procedure must be followed, and the Emergency Control Room will activate the additional (internal) resources at the request of the Incident Commander. The on-duty Senior Officer must inform the Chief Fire Officer, who will in turn inform the following:

- Director: Municipal Public Safety
- Municipal Manager

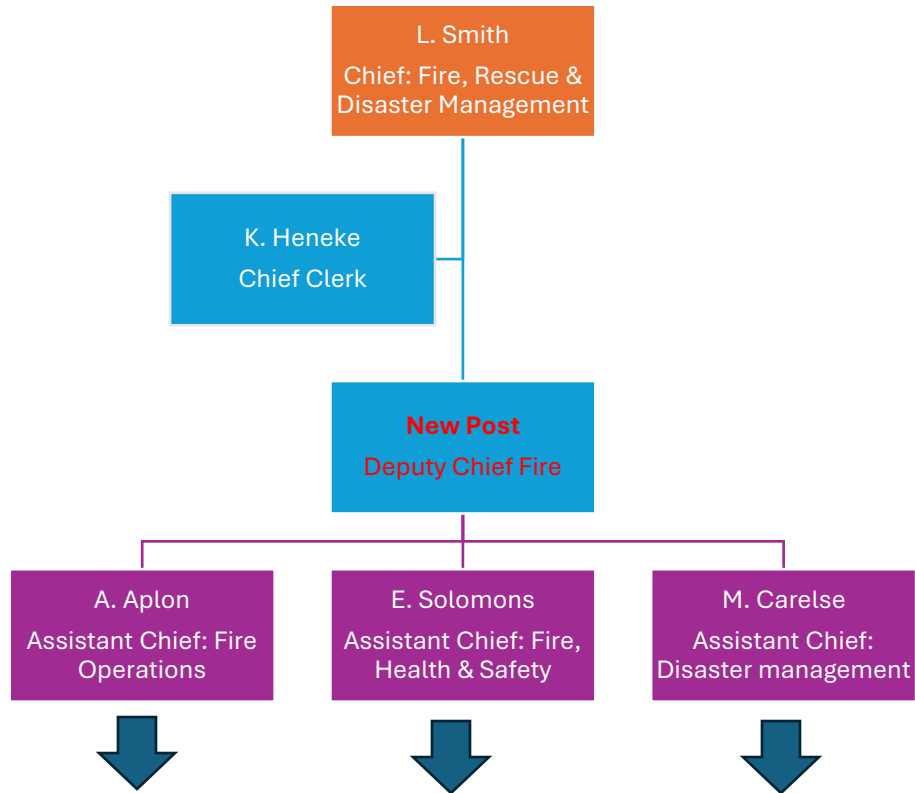
The Chief Fire Officer will ascertain whether there is a need to establish a JOC (Joint Operations Centre). Should a JOC be established, decisions will be taken on where it will be established, and the necessary arrangements will be made by the Incident Commander. The Chief Fire Officer will give instruction to the Assistant Chief: Disaster Management to open and activate all other role players and stakeholders

## SECTION C

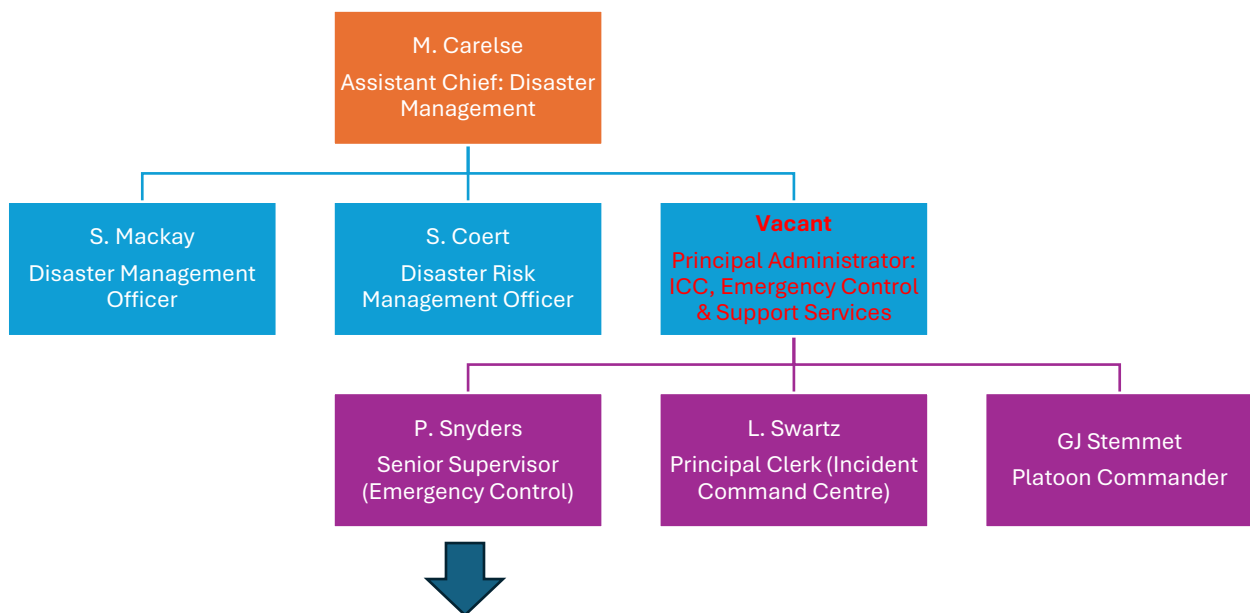
**6. Command and Control / Incident Support Senior Officials**

<b>Designation</b>	<b>Official name</b>
Chief: Fire, Rescue & Disaster Management	<b>Mr Lester Smith</b>
Assistant Chief: Disaster Management	<b>Meagan Carelse</b>
Assistant Chief: Operations & Training	<b>Mr Angelo Aplon</b>
Assistant Chief: Fire, Health and Safety	<b>Mr Enrico Solomons</b>
Principal Administrator: Incident Command Centre, Emergency Control & Support Services	<b>Vacant</b>
Divisional Commander	<b>Vacant</b>
Disaster Management Officer	<b>Mr Shaun Mackay</b>
Disaster Risk Management Officer	<b>Ms Sarolyn Coert</b>
Station Commander: Fire Safety	<b>Mr Justin Brussel</b>
Platoon Commander: Fire Safety	<b>Mr Turlo Samuels</b>
Platoon Commander	<b>Mr GJ Stemmet</b>
Senior Supervisor (Emergency Control)	<b>Ms Patricia Snyders</b>
Principal Clerk: Incident Command Centre	<b>Ms Lucia Swartz</b>
Chief Clerk	<b>Mrs Kim Heneke</b>

## 7. Organogram: Top Management Team

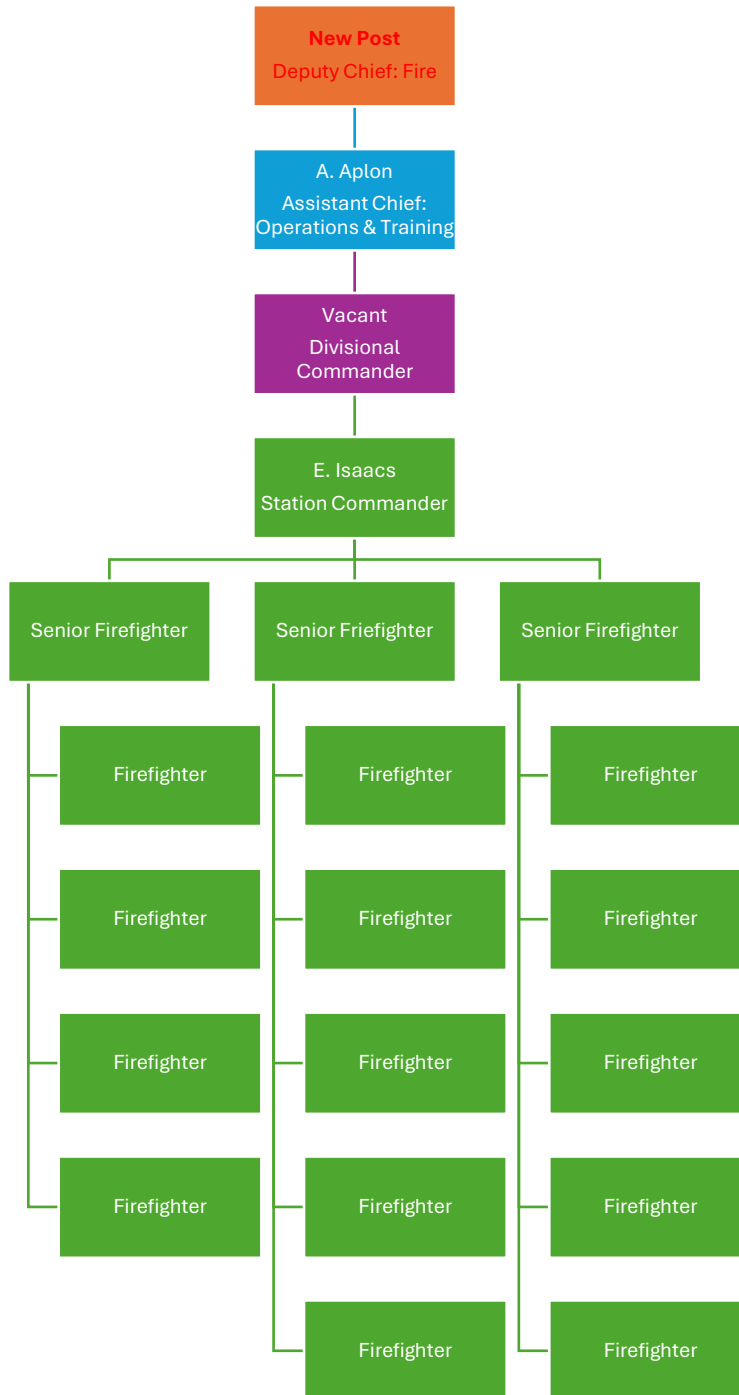


## 8. Organogram: Disaster Management Team

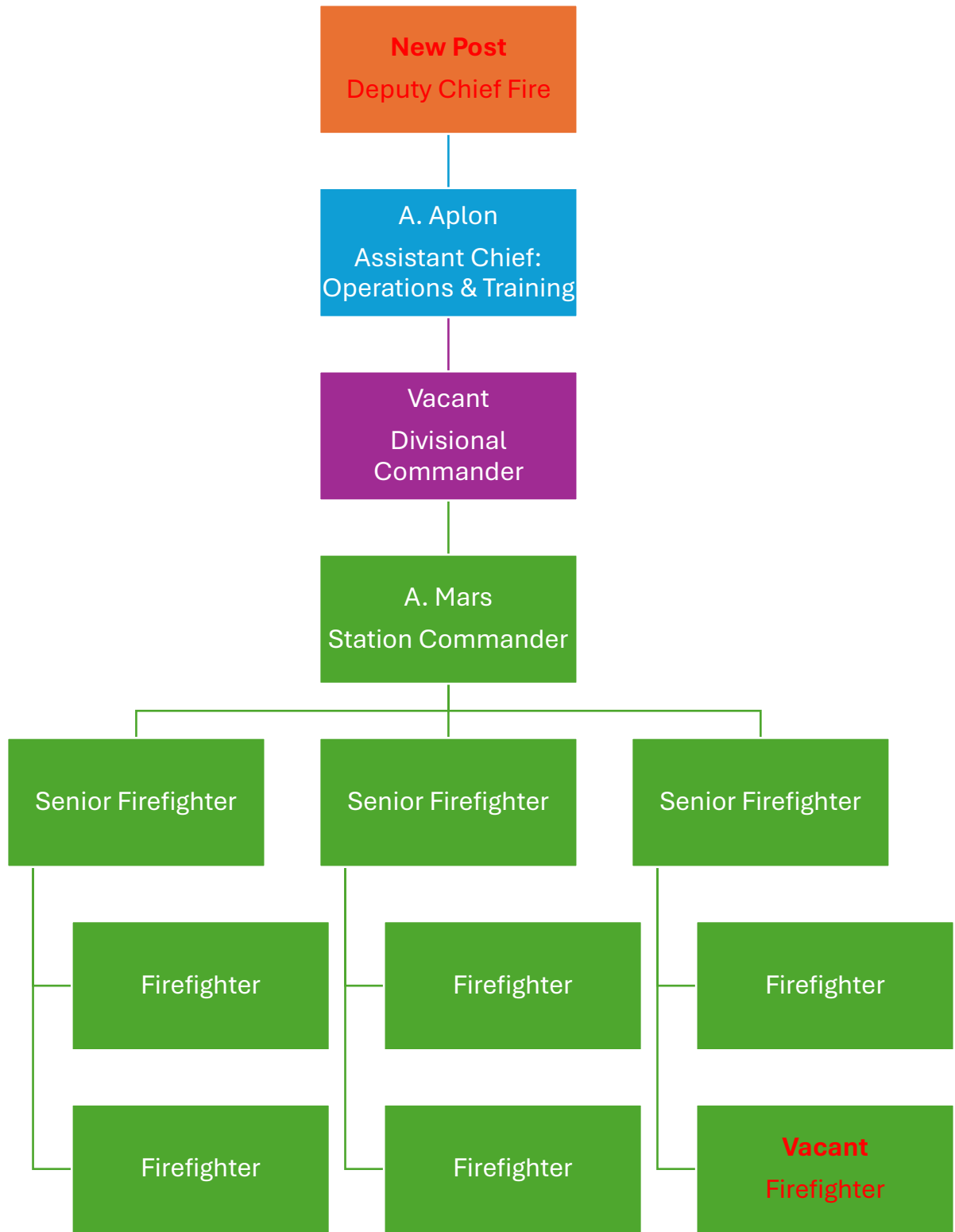


### 9. Organogram: Operations Team

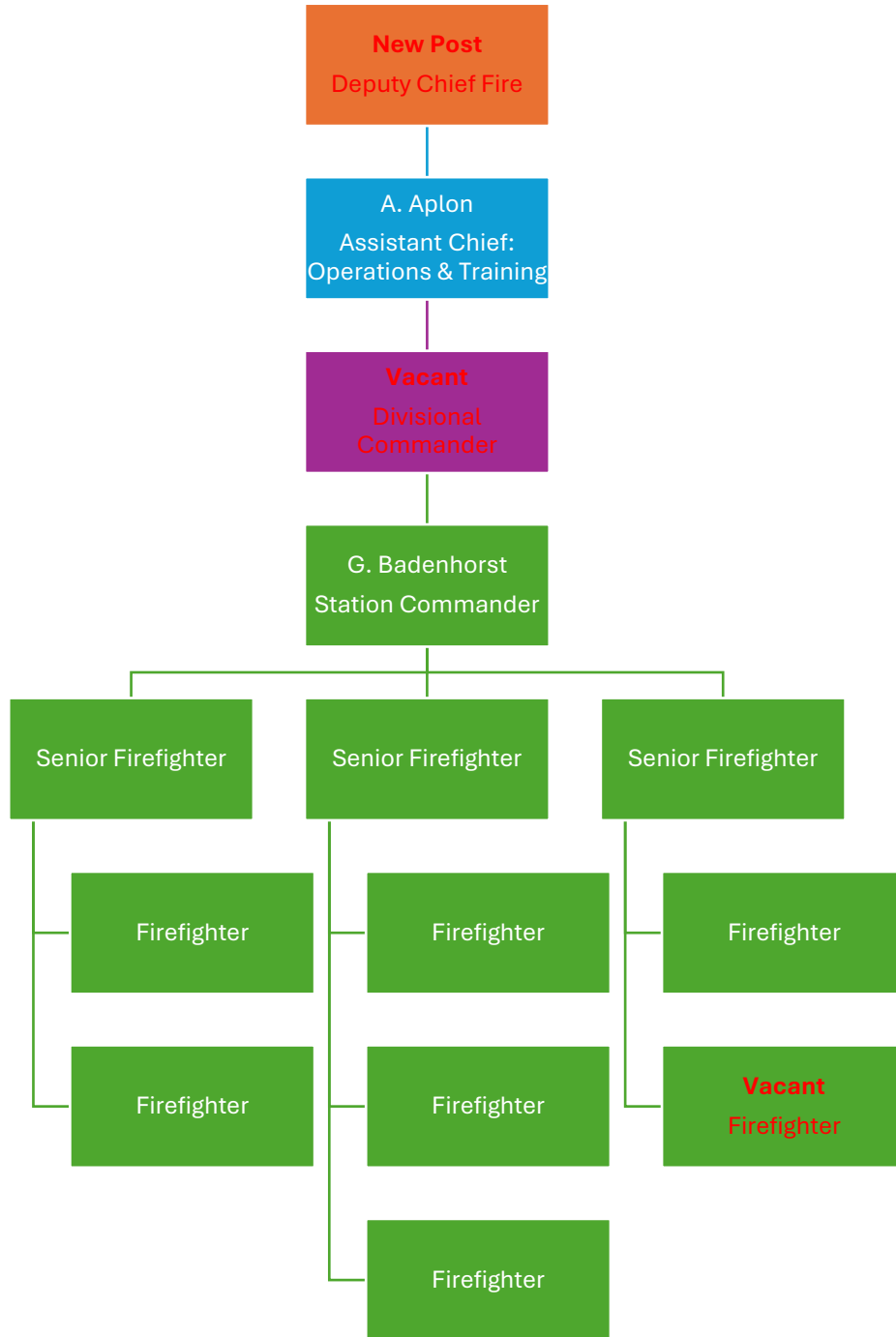
#### 9.1. Hermanus



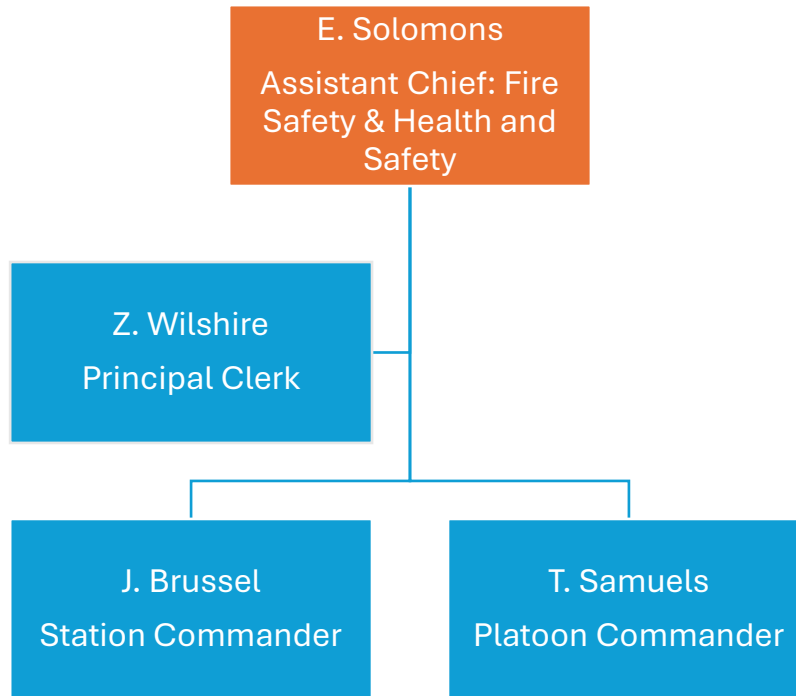
9.2. Kleinmond



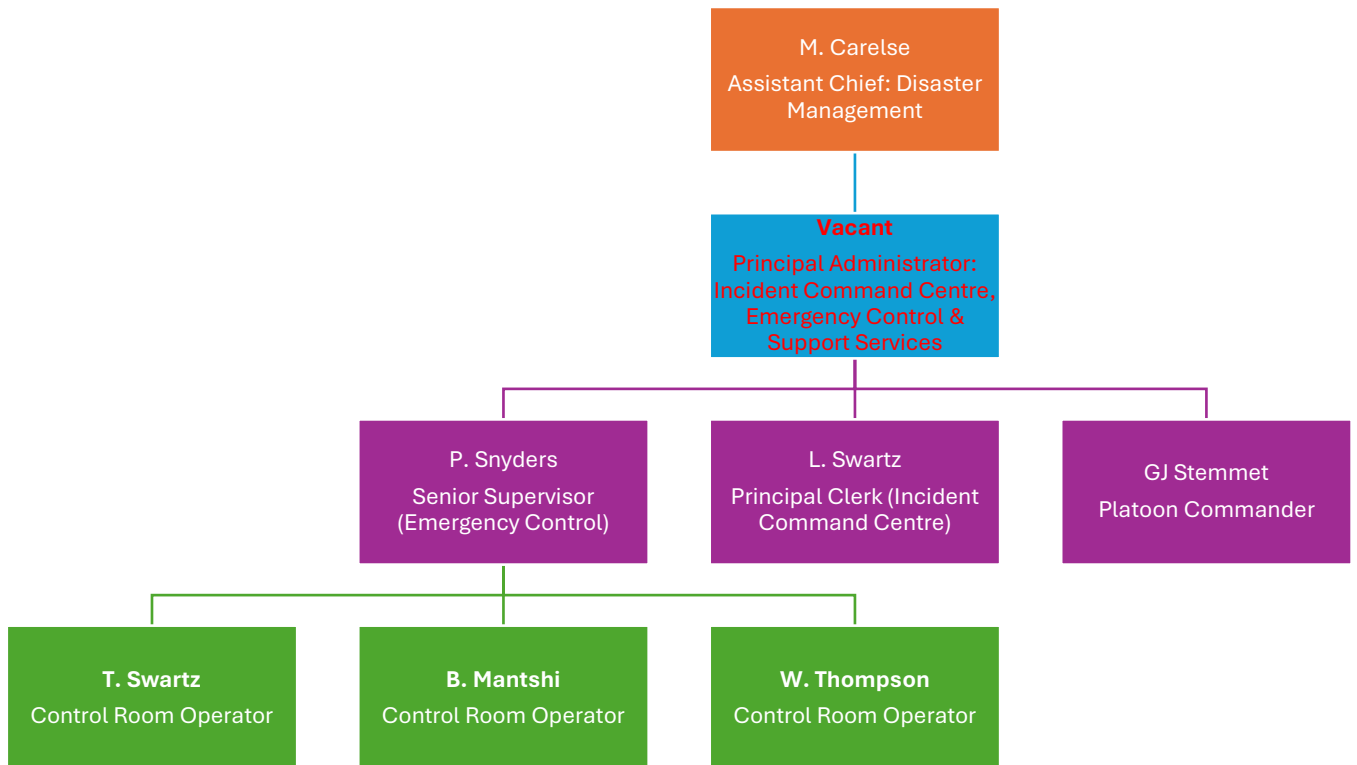
9.3 Gansbaai



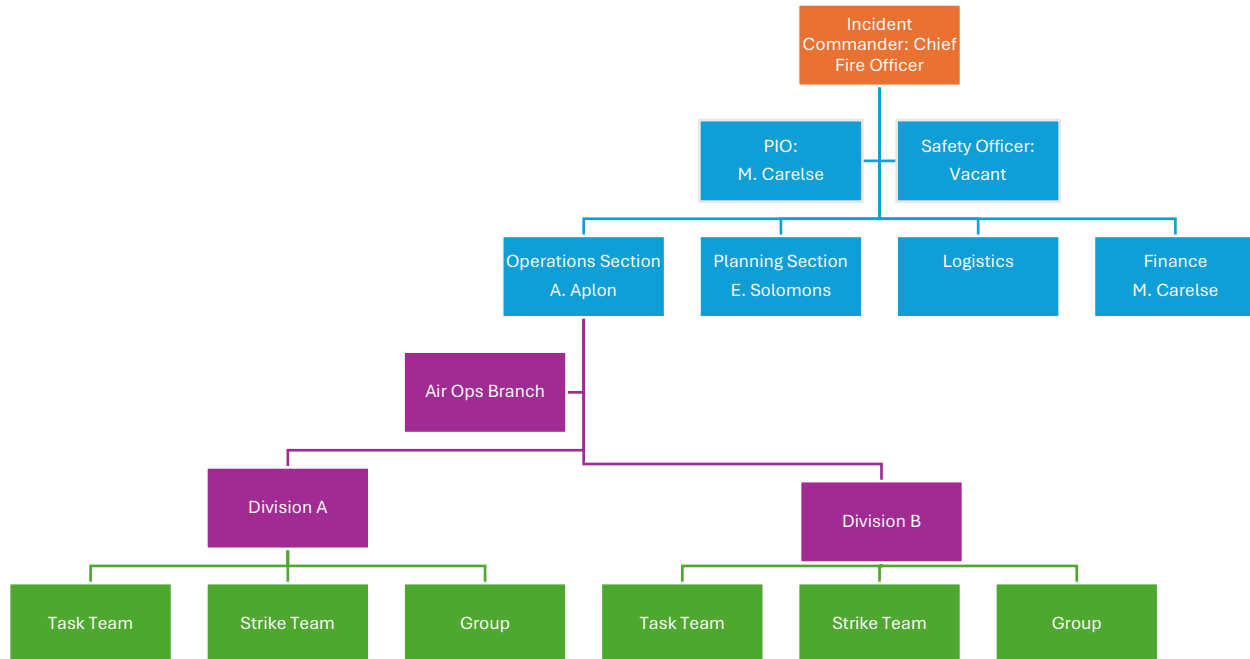
**10. Organogram: Fire Safety Team**



**11. Organogram: Incident Command Centre, Emergency Control & Support Services**



## 12. Proposed Incident Command Structure during emergencies



This is the proposed Incident Command System when it may be activated. The system is used to manage the response to an emergency or non-emergency incident or event.

The ICS is built around five major management activities, which include command staff and general staff. The command staff include the Public Information Officer (PIO), a Safety Officer and a Liaison Officer who will report directly to the Incident Commander. The general staff are responsible for the functional aspects of the incident command structure and consists of the Operations Section Chief, Planning Section Chief, Logistics Section Chief and Finance/Administration Section Chief:

**Public Information Officer:** responsible for interfacing with the public and media and/or with other agencies with incident-related information requirements

**Safety Officer:** responsible for monitoring incident operations and advising the IC/UC on all matters relating to operational safety, including health and safety of emergency responder personnel.

**Liaison Officer:** the IC's point of contact for representatives of other governmental agencies, NGO's and the private sector (with no jurisdiction or legal authority) to

provide input on their agency's policies, resource availability, and other incident-related matters.

**Operations:** operations staff conduct tactical operations to carry out the plan and develops the tactical objectives, organization, and directs all resources;

**Planning:** planning staff develops the action plan to accomplish the objectives, collects and evaluates information and maintains resource status;

**Logistics:** logistics staff provide support to meet incident needs, as well as resources and other services needed to support the incident;

**Finance/Administration:** finance/administration staff monitors costs related to the incident and provides accounting, procurement, time recording, and cost analysis.

The Command Staff and General Staff will be filled with senior officials with the rank starting from Platoon Commander and up, wherever possible. Staff members taking on the role on a more junior level will first obtain approval from the Chief Fire Officer or his delegated official.

**The following forms will be completed by the IC Command Staff at extended wildfire attacks (or any other incident where the ICS can be implemented):**

1. CAD Report (aka Uniti report to be updated regularly by the IC / IC staff
2. Incident Organizer or 201 for the initial attack
3. Incident Action Plan for incidents exceeding 12-hours. The IAP must be completed for a 12 or 24-hour period.

Unified Command (UC) can be implemented when an incident spans over multiple jurisdictions, a single jurisdiction with multiagency involvement, or multiple jurisdictions with multi-agency involvement.

The UC allows for agencies with different legal, geographic, and functional authorities and responsibilities to work together effectively without affecting individual agency authority, responsibility, or accountability.

Overstrand Municipality as the controlling authority will always take control of an incident within the jurisdiction; should the need arise, a UC can be implemented.

Two IMTs are on standby on a rotational basis. Refer to the shift rosters for the rotational standby.

## SECTION D

### 13. Operational working hours

#### 13.1. Hermanus, Gansbaai and Kleinmond Fire Station

13.1.1. Hermanus, Kleinmond and Gansbaai Fire Stations are currently operating on a 24-hour basis, with shifts commencing at 09:00. The 24-hour shifts came into effect as from 1 July 2022. Each shift consists of at least the following staffing complement:

<b>KLEINMOND</b>	<b>HERMANUS</b>	<b>GANSBAAI</b>
1x Station Commander	1 x Station Commander	1x Station Commander
1 x Senior Firefighter	1 x Senior Firefighter	1 x Senior Firefighter
2 x Firefighter	3 x Firefighter	2 x Firefighter
1 x Contract Firefighter	1 x Contract Firefighter	1 x Contract Firefighter
1 x Chrysalis / EPWP	1 x Chrysalis / EPWP	1 x Chrysalis / EPWP

13.1.2. Fire Operations will be augmented during office hours by a Platoon Commander, 1 x Fire assistant, and 1 x admin support for technical and logistical incident support.

13.1.3. Off-duty staff will be on a rotational standby roster, at any given time, with at least four additional firefighters on standby per day.

13.1.4. Four reserve Firefighters will be on standby on a rotational roster in Betties Bay and Pringle Bay.

13.1.5. Twenty Reservists will be available across the Overstrand Jurisdiction.

13.1.6. A Brigade Call-out can be instructed for all off-duty firefighters.

13.1.7. All available fire engines will be placed at strategic points during the festive season and New Year's Eve celebrations from 6 December 2025 until 16 January 2026.

#### 13.2. Disaster Management

13.2.1. Disaster Management operates as per the norm according to day workers (Monday – Thursday 07:45 till 16:30, Fridays 07:45 till 15:15, excluding public holidays).

13.2.2. Disaster Management officers will be activated to assist at extended wildfire attacks, structural fires (specifically backyard and informal dwellings), severe weather warnings and social distress incidents, amongst other.

13.2.3. A motivation will be submitted to the Director: Municipal Public Safety as and when the need arise to bring in temporary staff on overtime.

13.2.4. Refer to the Senior Duty Roster for standby officials (permanent)

13.2.5. Disaster Management in conjunction with Incident Command Center will establish a JOC when an event is classified as medium or high risk.

### 13.3. **Fire Safety**

13.3.1. Fire Safety operates as per the norm according to day workers (Monday – Thursday 07:45 till 16:30, Fridays 07:45 till 15:15, excluding public holidays).

13.3.2. Fire Safety officers will be activated to assist at extended attacks, may be called to assist at structural fires (specifically backyard and informal dwellings), severe weather warnings and social distress, amongst other.

13.3.3. Fire Safety officers may particularly be activated after hours to assist Law Enforcement Agencies with compliance at liquor establishments such as bars and taverns (both legal and illegal), and any other establishment as deemed to have the need for fire safety compliance.

13.3.4. A motivation will be submitted to the Director: Municipal Public Safety as and when the need arise to bring in temporary staff on overtime.

13.3.5. Refer to the Senior Duty Roster for standby officials (permanent).

### 13.4. **Incident Command and Emergency Control**

13.4.1. The day shift personnel (Principal Administrator, Principal Clerk, Senior Supervisor and General Assistant) operates as per the norm according to day workers (Monday – Thursday 07:45 – 1:30, Fridays 07:45 till 15:15, excluding public holidays). The Emergency Control Room Operates on a 12-hour shift which commences day shift (06:00 till 18:00) or night shift (18:00 till 06:00)

Principal Administrator	1
Platoon Commander	1
Principal Clerk (Incident Command Centre)	1
Senior Supervisor (Emergency Control)	1
Control Room Operator	3
Temporary Control Room Operator	5
General Assistant (Temporary)	1

13.4.2. The Emergency Control Room receives all calls for the Directorate: Municipal Public Safety which include Fire, Rescue & Disaster Management, Security Services, Traffic and Law Enforcement Services as well as the activation of external role players such as WCEMS, private ambulance services, SAPS, NSRI or other emergency services as may be deemed necessary. There are already constraints with service delivery due to limited staff to perform the function.

13.4.3. The Emergency Control Room will always have a minimum of two members on duty during the day shift and the night shift.

13.4.4. A motivation will be submitted to the Director: Municipal Public Safety as and when the need arises to bring in staff on overtime (operators can be utilized for the emergency control room or when there is an extended wildfire occurring as part of the logistics team)

13.4.5. The 12-hour roster for Incident Command and Emergency Control is rostered on the CAD (Computer Aided Dispatch) by the Emergency Control Room

13.4.6. Refer to the Senior Duty Roster for standby officials (permanent)

13.4.7. Incident Command in conjunction with Disaster Management will establish a JOC when an event is classified as medium or high risk

### 13.5. **Senior Duty Officer**

The Chief Fire Officer, Assistant Chief Fire Officer or his delegate will be available during office hours. A Senior Officer will be on standby after hours and on weekends. Refer to the shift roster from November 2025 – May 2026.

14. Shift roster November 2025

# November

# 2025

Monday	Tuesday	Wednesday	Thursday	Friday	Saturday	Sunday
					1 Aplon (Senior), Mars, Turlo, Shaun, Pat, Jade	2 Aplon (Senior), Mars, Turlo, Shaun, Pat, Jade
3 Stemmet, Justin, Meagan, Sarolyn, Isaacs (Senior), Gallie	4 Stemmet, Justin, Meagan, Sarolyn, Isaacs (Senior), Gallie	5 Stemmet, Justin, Meagan, Sarolyn, Isaacs (Senior), Gallie	6 Stemmet, Justin, Meagan, Sarolyn, Isaacs (Senior), Gallie	7 Stemmet, Justin, Meagan, Sarolyn, Isaacs (Senior), Gallie	8 Stemmet, Justin, Meagan, Sarolyn, Isaacs (Senior), Gallie	9 Stemmet, Justin, Meagan, Sarolyn, Isaacs (Senior), Gallie
10 Aplon (Senior), Mars, Turlo, Shaun, Pat, Jade, Esric	11 Aplon (Senior), Mars, Turlo, Shaun, Pat, Jade, Esric	12 Aplon (Senior), Mars, Turlo, Shaun, Pat, Jade, Esric	13 Aplon (Senior), Mars, Turlo, Shaun, Pat, Jade, Esric	14 Aplon (Senior), Mars, Turlo, Shaun, Pat, Jade, Esric	15 Aplon (Senior), Mars, Turlo, Shaun, Pat, Jade, Esric	16 Aplon (Senior), Mars, Turlo, Shaun, Pat, Jade, Esric
17 Stemmet, Justin, Meagan, Lucia, Isaacs (Senior), Gallie, Chief	18 Stemmet, Justin, Meagan, Lucia, Isaacs (Senior), Gallie, Chief	19 Stemmet, Justin, Meagan, Lucia, Isaacs (Senior), Gallie, Chier	20 Stemmet, Justin, Meagan, Lucia, Isaacs (Senior), Gallie, Chief	21 Stemmet, Justin, Meagan, Lucia, Isaacs (Senior), Gallie, Chief	22 Stemmet, Justin, Meagan, Sarolyn, Lucia, Isaacs (Senior), Gallie, Chief	23 Stemmet, Justin, Meagan, Lucia, Isaacs (Senior), Gallie, Chief
24 Aplon (Senior), Mars, Turlo, Shaun, Pat, Jade, Esric	25 Aplon (Senior), Mars, Turlo, Shaun, Pat, Jade, Esric	26 Aplon (Senior), Mars, Turlo, Shaun, Pat, Jade, Esric	27 Aplon (Senior), Mars, Turlo, Shaun, Pat, Jade, Esric	28 Aplon (Senior), Mars, Turlo, Shaun, Pat, Jade, Esric	29 Aplon (Senior), Mars, Turlo, Shaun, Pat, Jade, Esric	30 Aplon (Senior), Mars, Turlo, Shaun, Pat, Jade, Esric

## Events

15. Shift roster December 2025

# December

# 2025

Monday	Tuesday	Wednesday	Thursday	Friday	Saturday	Sunday
1 Stemmet, Justin, Meagan, Sarolyn, Isaacs, Gallie (Senior)	2 Stemmet, Justin, Meagan, Sarolyn, Isaacs, Gallie (Senior)	3 Stemmet, Justin, Meagan, Sarolyn, Isaacs, Gallie (Senior)	4 Stemmet, Justin, Meagan, Sarolyn, Isaacs, Gallie (Senior)	5 Stemmet, Justin, Meagan, Sarolyn, Isaacs, Gallie (Senior)	6 Stemmet, Justin, Meagan, Sarolyn, Isaacs, Gallie (Senior)	7 Stemmet, Justin, Meagan, Sarolyn, Isaacs, Gallie (Senior)
8 Aplon (Senior), Mars, Turlo, Shaun, Pat, Jade, Esric	9 Aplon (Senior), Mars, Turlo, Shaun, Pat, Jade, Esric	10 Aplon (Senior), Mars, Turlo, Shaun, Pat, Jade, Esric	11 Aplon (Senior), Mars, Turlo, Shaun, Pat, Jade, Esric	12 Aplon (Senior), Mars, Turlo, Shaun, Pat, Jade, Esric	13 Aplon (Senior), Mars, Turlo, Shaun, Pat, Jade, Esric	14 Aplon (Senior), Mars, Turlo, Shaun, Pat, Jade, Esric
15 Stemmet, Justin, Meagan, Lucia, Isaacs, Gallie (Senior), Chief	16 Stemmet, Justin, Meagan, Lucia, Isaacs, Gallie (Senior), Chief	17 Stemmet, Justin, Meagan, Lucia, Isaacs, Gallie (Senior), Chief	18 Stemmet, Justin, Meagan, Lucia, Isaacs, Gallie (Senior), Chief	19 Stemmet, Justin, Meagan, Lucia, Isaacs, Gallie (Senior), Chief	20 Stemmet, Justin, Meagan, Lucia, Isaacs, Gallie (Senior), Chief	21 Stemmet, Justin, Meagan, Lucia, Isaacs, Gallie (Senior), Chief
22 Aplon (Senior), Mars, Turlo, Shaun, Pat, Jade, Esric	23 Aplon (Senior), Mars, Turlo, Shaun, Pat, Jade, Esric	24 Aplon (Senior), Mars, Turlo, Shaun, Pat, Jade, Esric	25 Aplon (Senior), Mars, Turlo, Shaun, Pat, Jade, Esric	26 Aplon (Senior), Mars, Turlo, Shaun, Pat, Jade, Esric	27 Aplon (Senior), Mars, Turlo, Shaun, Pat, Jade, Esric	28 Aplon (Senior), Mars, Turlo, Shaun, Pat, Jade, Esric
29 Stemmet, Justin, Meagan, Sarolyn, Isaacs, Gallie (Senior)	30 Stemmet, Justin, Meagan, Sarolyn, Isaacs, Gallie (Senior)	31 Stemmet, Justin, Meagan, Sarolyn, Isaacs, Gallie (Senior)				

## Events

- 16 Dec – Day of Reconciliation
- 25 Dec – Christmas Day
- 26 Dec – Boxing Day

16. Shift roster January 2026

# January

# 2026

Monday	Tuesday	Wednesday	Thursday	Friday	Saturday	Sunday
			1 Stemmet, Justin, Meagan, Sarolyn, Isaacs, Gallie (Senior)	2 Stemmet, Justin, Meagan, Sarolyn,	3 Stemmet, Justin, Meagan, Sarolyn, Isaacs, Gallie (Senior)	4 Stemmet, Justin, Meagan, Sarolyn,
5 Aplon (Senior), Mars, Turlo, Shaun, Pat, Jade, Esric	6 Aplon (Senior), Mars, Turlo, Shaun, Pat, Jade, Esric	7 Aplon (Senior), Mars, Turlo, Shaun, Pat, Jade, Esric	8 Aplon (Senior), Mars, Turlo, Shaun, Pat, Jade, Esric	9 Aplon (Senior), Mars, Turlo, Shaun, Pat, Jade, Esric	10 Aplon (Senior), Mars, Turlo, Shaun, Pat, Jade, Esric	11 Aplon (Senior), Mars, Turlo, Shaun, Pat, Jade, Esric
12 Stemmet, Justin, Meagan, Lucia, Isaacs (Senior), Gallie, Chief	13 Stemmet, Justin, Meagan, Lucia, Isaacs (Senior), Gallie, Chief	14 Stemmet, Justin, Meagan, Lucia, Isaacs (Senior), Gallie, Chief	15 Stemmet, Justin, Meagan, Lucia, Isaacs (Senior), Gallie, Chief	16 Stemmet, Justin, Meagan, Lucia, Isaacs (Senior), Gallie, Chief	17 Stemmet, Justin, Meagan, Lucia, Isaacs (Senior), Gallie, Chief	18 Stemmet, Justin, Meagan, Lucia, Isaacs (Senior), Gallie, Chief
19 Aplon (Senior), Mars, Turlo, Shaun, Pat, Jade, Esric	20 Aplon (Senior), Mars, Turlo, Shaun, Pat, Jade, Esric	21 Aplon (Senior), Mars, Turlo, Shaun, Pat, Jade, Esric	22 Aplon (Senior), Mars, Turlo, Shaun, Pat, Jade, Esric	23 Aplon (Senior), Mars, Turlo, Shaun, Pat, Jade, Esric	24 Aplon (Senior), Mars, Turlo, Shaun, Pat, Jade, Esric	25 Aplon (Senior), Mars, Turlo, Shaun, Pat, Jade, Esric
26 Stemmet, Justin, Meagan, Sarolyn, Isaacs (Senior), Gallie	27 Stemmet, Justin, Meagan, Sarolyn, Isaacs (Senior), Gallie	28 Stemmet, Justin, Meagan, Sarolyn, Isaacs (Senior), Gallie	29 Stemmet, Justin, Meagan, Sarolyn, Isaacs (Senior), Gallie	30 Stemmet, Justin, Meagan, Sarolyn, Isaacs (Senior), Gallie	31 Stemmet, Justin, Meagan, Sarolyn, Isaacs (Senior), Gallie	

1 Jan – New Year

## Events

17. Shift roster February 2026

# February

# 2026

Monday	Tuesday	Wednesday	Thursday	Friday	Saturday	Sunday
						1 Stemmet, Justin, Meagan, Sarolyn, Isaacs
2 Aplon (Senior), Mars, Turlo, Shaun, Pat, Jade, Esric	3 Aplon (Senior), Mars, Turlo, Shaun, Pat, Jade, Esric	4 Aplon (Senior), Mars, Turlo, Shaun, Pat, Jade, Esric	5 Aplon (Senior), Mars, Turlo, Shaun, Pat, Jade, Esric	6 Aplon (Senior), Mars, Turlo, Shaun, Pat, Jade, Esric	7 Aplon (Senior), Mars, Turlo, Shaun, Pat, Jade, Esric	8 Aplon (Senior), Mars, Turlo, Shaun, Pat, Jade, Esric
9 Stemmet, Justin, Meagan, Lucia, Isaacs, Gallie (Senior), Chief	10 Stemmet, Justin, Meagan, Lucia, Isaacs, Gallie (Senior), Chief	11 Stemmet, Justin, Meagan, Lucia, Isaacs, Gallie (Senior), Chief	12 Stemmet, Justin, Meagan, Lucia, Isaacs, Gallie (Senior), Chief	13 Stemmet, Justin, Meagan, Lucia, Isaacs, Gallie (Senior), Chief	14 Stemmet, Justin, Meagan, Lucia, Isaacs, Gallie (Senior), Chief	15 Stemmet, Justin, Meagan, Lucia, Isaacs, Gallie (Senior), Chief
16 Aplon (Senior), Mars, Turlo, Shaun, Pat, Jade, Esric	17 Aplon (Senior), Mars, Turlo, Shaun, Pat, Jade, Esric	18 Aplon (Senior), Mars, Turlo, Shaun, Pat, Jade, Esric	19 Aplon (Senior), Mars, Turlo, Shaun, Pat, Jade, Esric	20 Aplon (Senior), Mars, Turlo, Shaun, Pat, Jade, Esric	21 Aplon (Senior), Mars, Turlo, Shaun, Pat, Jade, Esric	22 Aplon (Senior), Mars, Turlo, Shaun, Pat, Jade, Esric
23 Stemmet, Justin, Meagan, Sarolyn,	24 Stemmet, Justin, Meagan, Sarolyn,	25 Stemmet, Justin, Meagan, Sarolyn, Isaacs, Gallie (Senior)	26 Stemmet, Justin, Meagan, Sarolyn, Isaacs, Gallie (Senior)	27 Stemmet, Justin, Meagan, Sarolyn,	28 Stemmet, Justin, Meagan, Sarolyn, Isaacs, Gallie (Senior)	

## Events

18. Shift roster March 2026

# March

# 2026

Monday	Tuesday	Wednesday	Thursday	Friday	Saturday	Sunday
						1 Stemmet, Justin, Meagan, Sarolyn, Isaacs, Gallie (Senior)
2 Aplon (Senior), Mars, Turlo, Shaun, Pat, Jade, Esrc	3 Aplon (Senior), Mars, Turlo, Shaun, Pat, Jade, Esrc	4 Aplon (Senior), Mars, Turlo, Shaun, Pat, Jade, Esrc	5 Aplon (Senior), Mars, Turlo, Shaun, Pat, Jade, Esrc	6 Aplon (Senior), Mars, Turlo, Shaun, Pat, Jade, Esrc	7 Aplon (Senior), Mars, Turlo, Shaun, Pat, Jade, Esrc	8 Aplon (Senior), Mars, Turlo, Shaun, Pat, Jade, Esrc
9 Stemmet, Justin, Meagan, Lucia, Isaacs (Senior), Gallie, Chief	10 Stemmet, Justin, Meagan, Lucia, Isaacs (Senior), Gallie, Chief	11 Stemmet, Justin, Meagan, Lucia, Isaacs (Senior), Gallie, Chief	12 Stemmet, Justin, Meagan, Lucia, Isaacs (Senior), Gallie, Chief	13 Stemmet, Justin, Meagan, Lucia, Isaacs (Senior), Gallie, Chief	14 Stemmet, Justin, Meagan, Lucia, Isaacs (Senior), Gallie, Chief	15 Stemmet, Justin, Meagan, Lucia, Isaacs (Senior), Gallie, Chief
16 Aplon (Senior), Mars, Turlo, Shaun, Pat, Jade, Esrc	17 Aplon (Senior), Mars, Turlo, Shaun, Pat, Jade, Esrc	18 Aplon (Senior), Mars, Turlo, Shaun, Pat, Jade, Esrc	19 Aplon (Senior), Mars, Turlo, Shaun, Pat, Jade, Esrc	20 Aplon (Senior), Mars, Turlo, Shaun, Pat, Jade, Esrc	21 Aplon (Senior), Mars, Turlo, Shaun, Pat, Jade, Esrc	22 Aplon (Senior), Mars, Turlo, Shaun, Pat, Jade, Esrc
23 Stemmet, Justin, Meagan, Sarolyn, Isaacs (Senior), Gallie	24 Stemmet, Justin, Meagan, Sarolyn, Isaacs (Senior), Gallie	25 Stemmet, Justin, Meagan, Sarolyn, Isaacs (Senior), Gallie	26 Stemmet, Justin, Meagan, Sarolyn, Isaacs (Senior), Gallie	27 Stemmet, Justin, Meagan, Sarolyn, Isaacs (Senior), Gallie	28 Stemmet, Justin, Meagan, Sarolyn, Isaacs (Senior), Gallie	29 Stemmet, Justin, Meagan, Sarolyn, Isaacs (Senior), Gallie

21 Mar – Human Rights Day

# Events

19. Shift roster April 2026

# April

# 2026

Monday	Tuesday	Wednesday	Thursday	Friday	Saturday	Sunday
30 Aplon (Senior), Mars, Turlo, Shaun, Pat, Jade, Esric	31 Aplon (Senior), Mars, Turlo, Shaun, Pat, Jade, Esric	1 Aplon (Senior), Mars, Turlo, Shaun, Pat, Jade, Esric	2 Aplon (Senior), Mars, Turlo, Shaun, Pat, Jade, Esric	3 Aplon (Senior), Mars, Turlo, Shaun, Pat, Jade, Esric	4 Aplon (Senior), Mars, Turlo, Shaun, Pat, Jade, Esric	5 Aplon (Senior), Mars, Turlo, Shaun, Pat, Jade, Esric
6 Stemmet, Justin, Meagan, Lucia, Isaacs, Gallie (Senior), Chief	7 Stemmet, Justin, Meagan, Lucia, Isaacs, Gallie (Senior), Chief	8 Stemmet, Justin, Meagan, Lucia, Isaacs, Gallie (Senior), Chief	9 Stemmet, Justin, Meagan, Lucia, Isaacs, Gallie (Senior), Chief	10 Stemmet, Justin, Meagan, Lucia, Isaacs, Gallie (Senior), Chief	11 Stemmet, Justin, Meagan, Lucia, Isaacs, Gallie (Senior), Chief	12 Stemmet, Justin, Meagan, Lucia, Isaacs, Gallie (Senior), Chief
13 Aplon, Mars, Turlo, Shaun, Pat, Jade, Esric	14 Aplon, Mars, Turlo, Shaun, Pat, Jade, Esric	15 Aplon, Mars, Turlo, Shaun, Pat, Jade, Esric	16 Aplon, Mars, Turlo, Shaun, Pat, Jade, Esric	17 Aplon, Mars, Turlo, Shaun, Pat, Jade, Esric	18 Aplon, Mars, Turlo, Shaun, Pat, Jade, Esric	19 Aplon, Mars, Turlo, Shaun, Pat, Jade, Esric
20 Stemmet, Justin, Meagan, Sarolyn, Isaacs, Gallie (Senior)	21 Stemmet, Justin, Meagan, Sarolyn, Isaacs, Gallie (Senior)	22 Stemmet, Justin, Meagan, Sarolyn, Isaacs, Gallie (Senior)	23 Stemmet, Justin, Meagan, Sarolyn, Isaacs, Gallie (Senior)	24 Stemmet, Justin, Meagan, Sarolyn, Isaacs, Gallie (Senior)	25 Stemmet, Justin, Meagan, Sarolyn, Isaacs, Gallie (Senior)	26 Stemmet, Justin, Meagan, Sarolyn, Isaacs, Gallie (Senior)
27 Aplon (Senior), Mars, Turlo, Shaun, Pat, Jade, Esric	28 Aplon (Senior), Mars, Turlo, Shaun, Pat, Jade, Esric	29 Aplon (Senior), Mars, Turlo, Shaun, Pat, Jade, Esric	30 Aplon (Senior), Mars, Turlo, Shaun, Pat, Jade, Esric			

## Events

- 3 Apr – Good Friday
- 6 Apr – Family Day
- 27 Apr – Freedom Day

20. Shift roster May 2026

# May

# 2026

Monday	Tuesday	Wednesday	Thursday	Friday	Saturday	Sunday
				1	2	3
				Aplon (Senior), Mars, Turlo, Shaun, Pat, Jade, Esric	Aplon (Senior), Mars, Turlo, Shaun, Pat, Jade, Esric	Aplon (Senior), Mars, Turlo, Shaun, Pat, Jade, Esric
4	5	6	7	8	9	10
Stemmet, Justin, Meagan, Lucia, Isaacs, Gallie (Senior), Chief	Stemmet, Justin, Meagan, Lucia, Isaacs, Gallie (Senior), Chief	Stemmet, Justin, Meagan, Lucia, Isaacs, Gallie (Senior), Chief	Stemmet, Justin, Meagan, Lucia, Isaacs, Gallie (Senior), Chief	Stemmet, Justin, Meagan, Lucia, Isaacs, Gallie (Senior), Chief	Stemmet, Justin, Meagan, Lucia, Isaacs, Gallie (Senior), Chief	Stemmet, Justin, Meagan, Lucia, Isaacs, Gallie (Senior), Chief
11	12	13	14	15	16	17
Aplon (Senior), Mars, Turlo, Shaun, Pat,	Aplon (Senior), Mars, Turlo, Shaun, Pat,	Aplon (Senior), Mars, Turlo, Shaun, Pat, Jade, Esric	Aplon (Senior), Mars, Turlo, Shaun, Pat,	Aplon (Senior), Mars, Turlo, Shaun, Pat,	Aplon (Senior), Mars, Turlo, Shaun, Pat,	Aplon (Senior), Mars, Turlo, Shaun, Pat,
18	19	20	21	22	23	24
Stemmet, Justin, Meagan, Sarolyn, Isaacs	Stemmet, Justin, Meagan, Sarolyn, Isaacs	Stemmet, Justin, Meagan, Sarolyn, Isaacs (Senior), Gallie	Stemmet, Justin, Meagan, Sarolyn, Isaacs (Senior), Gallie	Stemmet, Justin, Meagan, Sarolyn, Isaacs	Stemmet, Justin, Meagan, Sarolyn, Isaacs (Senior), Gallie	Stemmet, Justin, Meagan, Sarolyn, Isaacs
25	26	27	28	29	30	31
Aplon (Senior), Mars, Turlo, Shaun, Pat, Jade, Esric	Aplon (Senior), Mars, Turlo, Shaun, Pat, Jade, Esric	Aplon (Senior), Mars, Turlo, Shaun, Pat, Jade, Esric	Aplon (Senior), Mars, Turlo, Shaun, Pat, Jade, Esric	Aplon (Senior), Mars, Turlo, Shaun, Pat, Jade, Esric	Aplon (Senior), Mars, Turlo, Shaun, Pat, Jade, Esric	Aplon (Senior), Mars, Turlo, Shaun, Pat, Jade, Esric

1 May – Workers day

## Events

## SECTION E

## 21. Vehicles and appliances

CALL SIGN	REG NUMBER	STATUS	LOCATION	DESCRIPTION	CLASS	Model Year
<b>COMMAND VEHICLES</b>						
Delta 1	CEM 23400	On run	Hermanus	Nissan Navara 2.5 TD LWB 4X4	Mobile Command Vehicle – Disaster Management	2015
CV 1	CEM 44444	On run	Hermanus	Ford Ranger DC 4X4	Mobile Command Vehicle	2018
CV 2	CEM 21801	On run	Hermanus	Isuzu D Max 1.9	Mobile Command Vehicle	2025
CV 3	CEM 28612	On run	Kleinmond	Isuzu D Max 1.9	Mobile Command Vehicle	2025
CV 4	CEM 21851	On run	Gansbaai	Isuzu D Max 1.9	Mobile Command Vehicle	2025
<b>MAJOR PUMPERS</b>						
Engine 1-1	CEM 37463	On run	Hermanus	Mercedes Benz Ateco 1328	Major Pumper type I	2014
Engine 2-1	CEM 7532	On run	Gansbaai	Iveco (4X4)	Major Pumper type III	2019
Engine 3-1	CEM 10226	On run	Kleinmond	Mercedes Benz Ateco 1328	Major Pumper type III	2009
<b>PUMPERS</b>						
Pump 1	CEM 30714	On run	Hermanus	Toyota Hino 4X4	All Terrain Appliance	2018
Pump 2	CEM 48495	On run	Gansbaai	Isuzu FTS 750	All Terrain Appliance	2019
Pump 3	CEM 2869	On run	Gansbaai	Tata 713C 4X4	All Terrain Appliance	2006
Pump 5	CEM 48493	On run	Hermanus	Isuzu FTS 750	All Terrain Appliance	2019
Pump 6	CEM 1626	On run	Pringle Bay	Mercedes Buffel	All Terrain Appliance	1982
Pump 7	CEM 21426	On run	Kleinmond	Isuzu FTS 750	All Terrain Appliance	2019
<b>WATER TANKERS</b>						
Tanker 1		On run	Hermanus	Isuzu FR 800	Water Tanker	2025
<b>SKID UNITS</b>						
Alpha 1	CEM 44284	On run	Hermanus	Toyota Landcruiser	Skid Unit	2018
Alpha 2	CEM 32828	On run	Stanford	Toyota Landcruiser	Skid Unit	2011
Alpha 3	CEM 28939	On run	Pringle Bay	Toyota Landcruiser	Skid Unit	2019
Alpha 4	CEM 12594	On-run	Gansbaai	Ford Ranger Subercab 2.2 4x4	Skid Unit	2020
Alpha 7	CEM 6556	On-run	Kleinmond	Ford Ranger Supercab 2.2 4x4	Skid unit	2020
<b>SUPPORT VEHICLES</b>						
SV01	CEM 38652	Onrun	Hermanus	Volkswagen Polo ViVo 1.4	Support Vehicle	2015
SV02	CEM 47688	On run	Control Room	Volkswagen Polo Sedan	Support Vehicle	2019
SV03	CEM 42054	On run	Kleinmond	Nissan NP 300	Utility Vehicle	2017
SV04	CEM 30870	On Run	Hermanus	Ford Ranger Single Cab	Utility Vehicle	2019
SV05	CEM 8219	On run	Fire Safety	Ford Ranger XL 4x2 DC	Support Vehicle	2021
SV06	CAM 13012	On run	Betty's Bay	Nissan Hardbody 2.0 4x2 1-ton LDV	Bakkie Unit	2007

<b>SV07</b>	CEM 42270	On run	Control Room	VW POLO SEDSN	Support Vehicle	
<b>SV08</b>	CEM 11565	On run	Hermanus	Ford Ranger XL 4x2 DC	Utility Vehicle	2021
<b>SV09</b>	CEM 13116	On run	Safe & Security	Ford Ranger XL 4x2 DC	Utility Vehicle	2021
<b>SV10</b>	CEM 33893	On run	Safety & Security	VW POLO SEDAN	Utility Vehicle	
<b>SV11</b>	CEM 44285	On run	Safety & Security	Toyota Corolla	Support Vehicle	
	CEM 14938	OFF run		Toyota Hilux 2.7i 4x4	Utility Vehicle	2006
	CEM 23784	On run		Nissan Hardbody NP300 4X4	Utility Vehicle	2011
<b>TRAILERS</b>						
Tango 1	CAM 4600	On run	Stanford	Trailer – Rope Rescue		
Tango 2	CAM 4601	On run	Stanford	Trailer – Hazmat		
Tango 3	CAM 1266	OFF rum	Gansbaai	Trailer – Portable dam		
Tango 4	CEM 3366	On run	Betty's bay	Trailer- Skid unit		
Tango 5	CEM 25651	On run	Baardskeerdersbos	Trailer -Skid Unit		
Tango 6	CAM 30979	On run	Kleinmond	Trailer – SCBA compressor		
Tango 7	CEM 2740	On run	Stanford	Temp ICC ICP/JOC equipment		
NB: Senior Officers must utilize marked municipal vehicles with the necessary radio communication for Command and Control of incidents during major incidents, marked vehicles must also be utilized when communicating with ground resources and aerial support. Municipal or marked vehicles are easily identifiable to the general public. Due to the nature of our inherent fire risk and history of fire related incidents, incident commanders must use municipal vehicles to communicate with other agencies, e.g. WOF, ODM, SAPS, WCEMS etc.						

## 22. Provincial Fire and Disaster Management Assistance (Depending on Provincial & District Requirements)

### 22.1. Available aerial resources from 1 December 2025 – 30 April 2026

- AT 802 (Aerial Tractor)
- Huey Helicopter
- Spotter
- Black Hawk Chopper

The Western Cape Provincial Government Fire Brigade Services will assist with aerial support for the initial fire attack with a combination of aerial resources via the ODM. After approval, they will cover the costs for the first hour of initial attack aerial firefighting. Aerial resources will be available for extended fire attack operations.

### 22.2. Municipal Boundary and Helicopter Fly Zone

Please see Service Level Agreement between Overstrand Fire & Emergency Services, Disaster Management and Security Services and Overberg Fire and Rescue Services.

### 22.3. **Possible funding implications & deviation**

- Additional shifts from 1 November 2025 – 31 May 2026 to man strategic points
- Additional overtime and standby for Senior Officers and Firefighters (extended incidents)
- Working on Fire Resources (Western Cape Province), Fire Suppressing Support (Ground / Aerial), and or Transport for Working on Fire Personnel
- Food rations (extended or on request of Chief Fire Officer/incident commander)
- Additional logistic support from Overstrand Municipal department and/or other external resources
- Specialised ground teams
- Other Municipalities for services rendered

### 22.4. **Ground Team Firefighting Resources**

- Walker Bay Working on Fire Ground crew
- Bredasdorp Working on Fire Ground crew
- Kleinmond Working on Fire Ground crew
- Other Available Private Specialized Ground teams
- VWS (Volunteer Wildfire Services)
- NCC
- Other contracted ground team resources available

### 22.5. **Call-out procedures.**

In an emergency (a situation that poses an immediate risk to life, health, property, or the environment), normal procurement procedures cannot be followed. The following call-out procedure for additional resources is:

Air or ground support request (on emergency) from Chief Fire Officer / Incident Commander to Director: Municipal Public Safety / Municipal Manager for approval or approval for overspending. On approval, the Chief Fire Officer / Incident Commander will contact District or Provincial Fire Management to dispatch requested resources to the location and manage these resources, and keep the Director / MM informed.

All air and ground support, after the necessary approval, resources can be requested via Bredasdorp Dispatch:

060 961 8847

082 312 9507

Please take note of Brigade Order 05/09/2016

It is the responsibility of the Incident Commander, at particularly large and/or extended incident(s) to inform the Office of the Fire Chief that additional resources were utilized to assist Overstrand Fire Services with fire suppression and/or other activities.

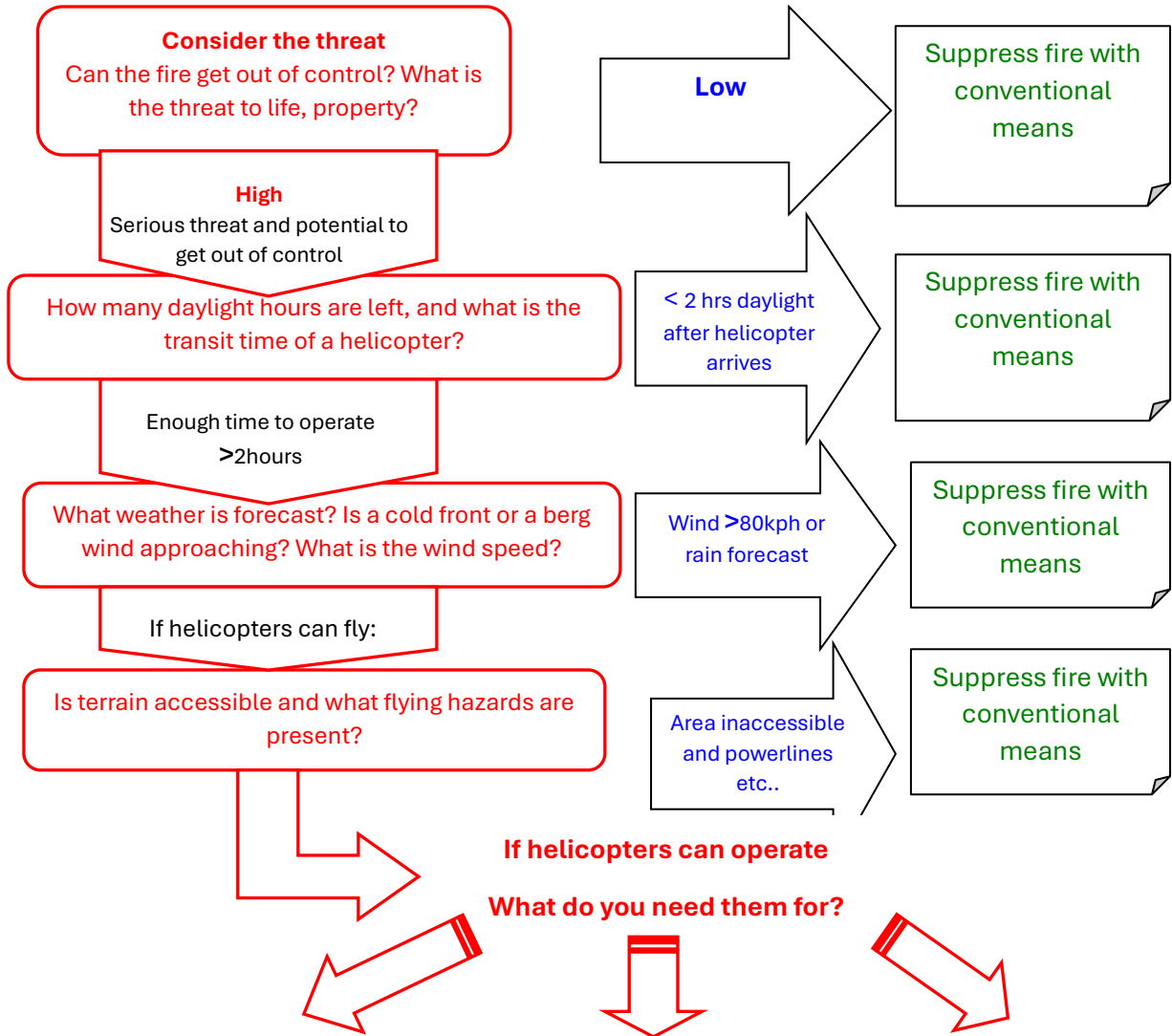
The Office of the Fire Chief must be informed of additional resources utilized one day after the resources has been utilized: for each day that the resources were utilized.

The accepted method to inform the Office of the Fire Chief is per email to [lestersmith@overstrand.gov.za](mailto:lestersmith@overstrand.gov.za)  
[firesec@overstrand.gov.za](mailto:firesec@overstrand.gov.za)  
[mcarelse@overstrand.gov.za](mailto:mcarelse@overstrand.gov.za)

The following information will form the base of the email informing the Chief Fire Officer of the resources utilized:

- I. The incident reference number (and fire “name”)
- II. The date the resource was utilized
- III. The reason why additional resources were requested
- IV. The type of resource utilized, eg ground teams, aerial, digger loader etc.  
Include the name of the company
- V. In the event that WOF was utilized, state which team and how the team arrived at the incident
- VI. All other information which is deemed relevant to the situation.

**Questions to ask before calling the helicopters**



Reconnaissance	Trooping	HAFS
1) Prepare LZ for briefing	1) Prepare LZ	1) Is the potential damage sufficient to warrant extensive expenditure?
2) Prepare flight plan	2) Appoint emplaning and deplaning officers	2) Are there sufficient firefighters on the fire line?
3) Check air to ground comms	3) Brief fire fighters	3) Are adequate water sources close by?
4) Check onboard comms	4) Brief air crew on drop LZ's	4) Is aviation fuel available?
5) Take maps, pens, and camera.		5) Do you have ground to air comms and other necessary equipment?
		If answers to above are yes – proceed.
		<ul style="list-style-type: none"> <li>• Prepare LZ's</li> <li>• Undertake briefings</li> <li>• Appoint ground crew, AAB, check comms.</li> </ul>

## 23. SWOT analysis

### Strengths

- Dynamic Leadership
- In the process of addressing Infrastructure, Vehicles, Personnel, Training
- Strong Organizational Structure
- Command Structure (ICS Principles)
- Disciplined Fire Fighters
- 24/7 Available Fire, Rescue and Disaster Management Service
- Hermanus Fire Station Shift System
- All available Fire Engines will be place at strategic point during New Year's eve celebration and in Mid and Post season from 6 December 2025 until 16 January 2026
  - at Pringle Bay, Rooi Els, Betty's Bay, Kleinmond Main beaches,
  - Grotto Beach, Fisherhaven , Municipal Stores and the Pools at Hawston, as well as
  - Uilenkraalsmond, Stanfordsbaai, Franskraal and Pearly Beach with staff compliment.

### Opportunities

- Each veld fire incident provides an opportunity to reduce fuel (vegetation)
- Festive season period offers a unique opportunity to apply skills and gain experience in the fire, rescue and disaster management environment
- Opportunity to Create an Safe Environment for Communities, Visitors and Tourists

### Weakness

- Limited Infrastructure
- Limited Vehicles (vehicles taken out of service)
- Condition of Vehicles (mechanical failure)
- Limited Equipment
- Condition of Equipment (deteriorating equipment)
- Limited Personnel (Man Power)
- One turn out per shift
- Limited Trained Personnel
- Level of Training
- Gansbaai and Kleinmond limited firefighters per shift
- Limited Funding

### Threats

#### Fires

- Structural (Formal, Informal, Commercial, Industrial)
- Veld Fires

Motor vehicle/ pedestrian accidents

Boating accidents (Sea/ Lagoon)

Para-glider accidents

Hiking accidents

Drowning accidents (sea, lagoon, swimming pools, rivers)

#### Threat Drivers

Influx of visitors, tourists .

Weather (dry, windy, high temp), Topography (limited access) and Vegetation (age/density/type ect)

Extended Fire Season

Multiple incidents or Extended Fire Rescue and Disaster Incidents

Global warming

Climate Change

## SECTION F

## 24. Pro-active activities

## 24.1. Burn permits issued

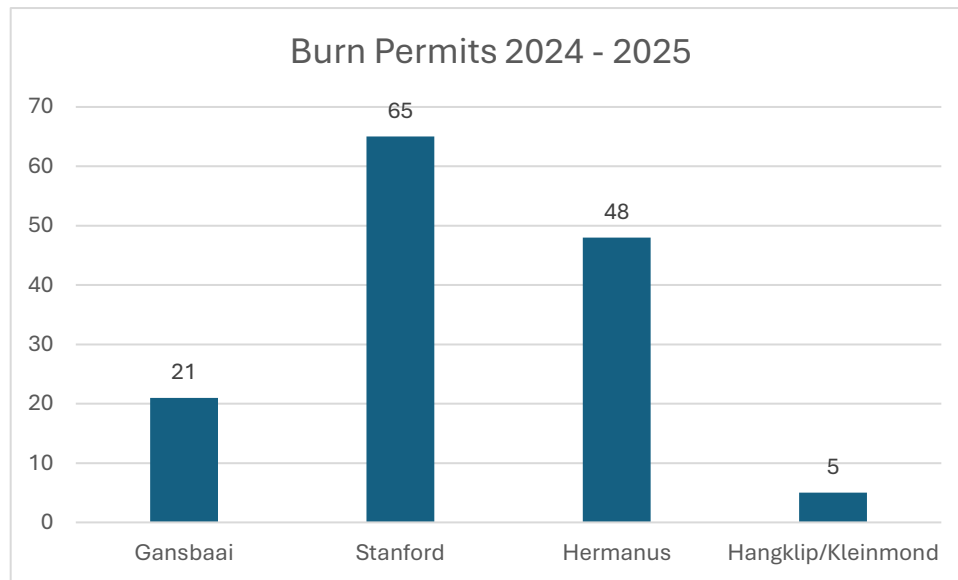


Chart 1: Burn Permit Inspections

For the financial year, 139 burn permits were issued, which include the burn permit extensions.

Burn permit holders must comply with the conditions as set out on the approved burn permit. Such conditions may include, but are not limited to:

- \* Adequate firebreaks must surround the area intended to burn
- \* Burning is subject to weather conditions
- \* Stack and fuel reduction burns are permitted between May and October, while Agricultural burns are permitted between February and September. Training burns are not limited to any month of the year
- \* Prescribed / ecological and biodiversity burns are limited to February, March, April, September, October and November
- \* No burning is allowed on Orange or Red days (Fire Danger Index)
- \* No burning is permitted on a Saturday, Sunday, Public Holiday or a day before a long weekend

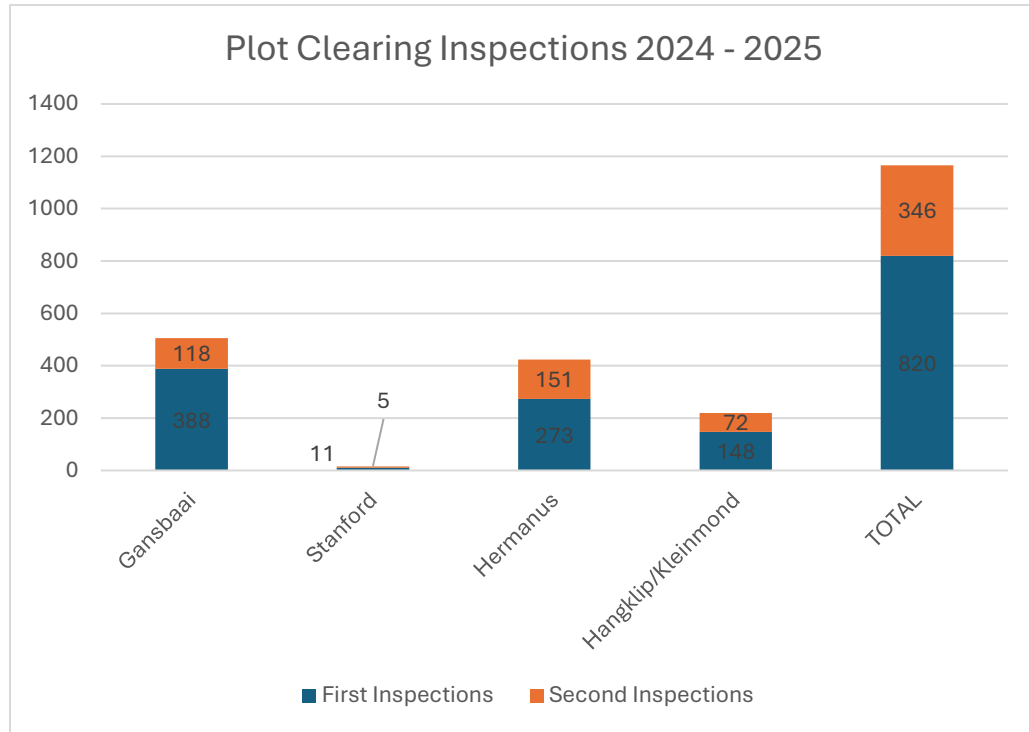


Chart 2: Plot clearing inspections

**24.2. Plot clearing inspections**

Of the 1166 first and second inspections conducted between 1 July 2024 and 30 June 2025, 540 notices were issued, 41 erven were cleared by the appointed contractor and 948 were cleared by the owner.

Plot clearing is an on-going and continuous project to identify potential fire hazards and fire hazards in an area. The Policy for Creating and Maintaining Fire Wise Vacant Erven In Urban and Suburban Areas of the Overstrand Municipality identifies the responsibilities and rights of the municipality and obligations of landowners. The prescribed standards for reducing vegetation is available in chapter 8 of the policy.

Challenges are experienced with the policy as approved by Council on 28 September 2022. The turnaround time for appointing a contractor has increased as per the standard procedures, the owner must be summonsed to appear in court due to non-compliance prior to a contractor being appointed to clear. This causes delays in the process.

24.3. **Fire Safety & awareness activities**

24.3.1. **Business licenses**

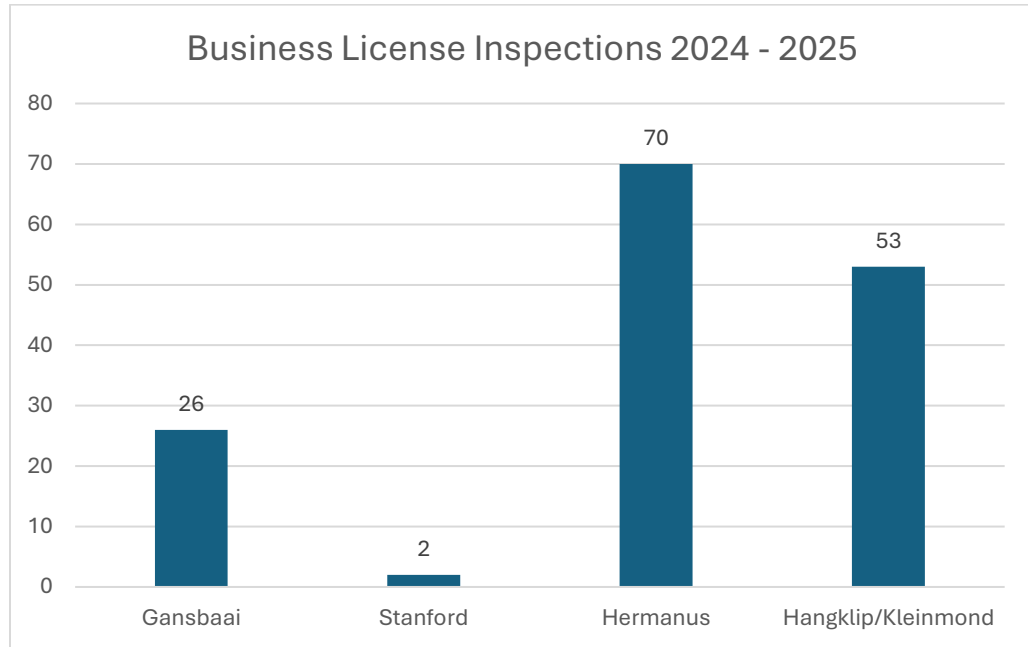


Chart 3: Business license inspections

For the financial year, 151 Business License Inspections were conducted from 1 July 2024 – 30 June 2025.

24.3.2. **Event inspections**

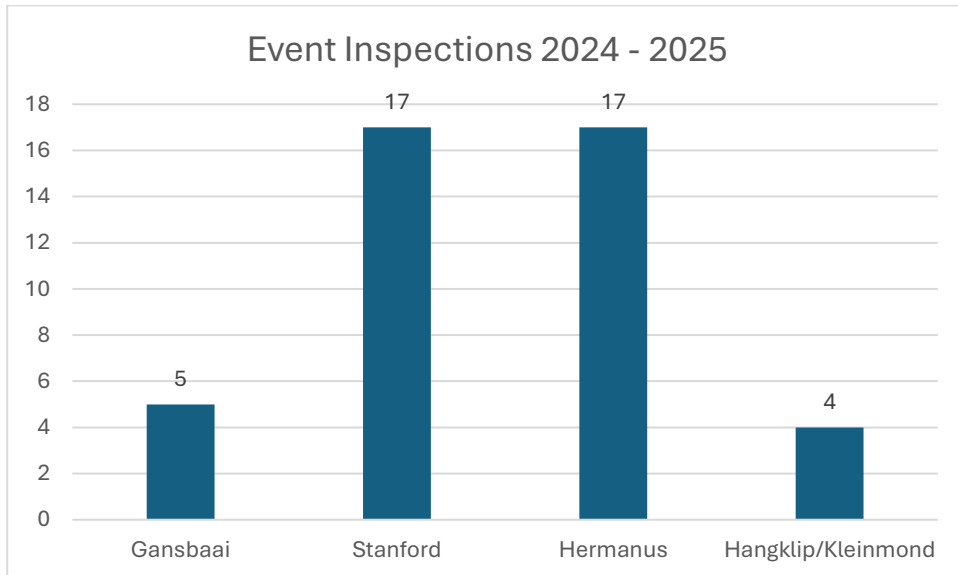


Chart 4: Event inspections

For the financial year, 42 Event Inspections were conducted from 1 July 2024 – 30 June 2025.

### 24.3.3. Early Childhood Development Inspections

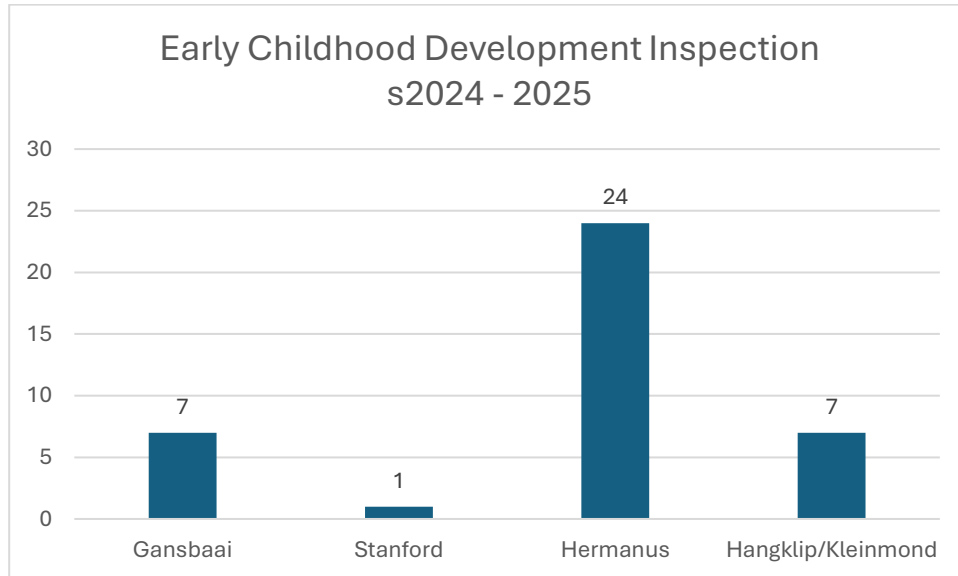


Chart 5: Early Childhood Development inspections

For the financial year, 39 Early Childhood Development Inspections were conducted from 1 July 2024 – 30 June 2025.

### 24.3.4. Population Certificate

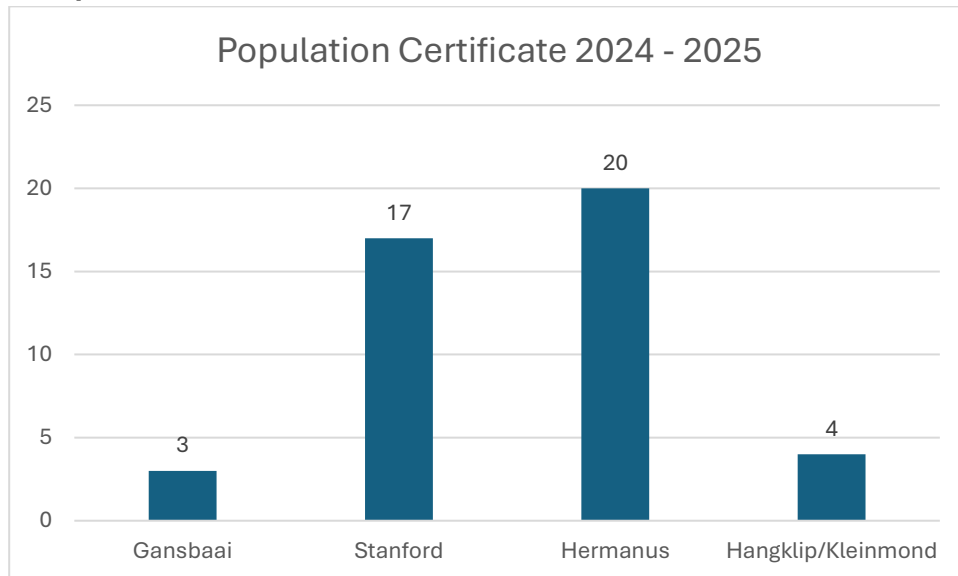


Chart 6: Population Certificates issued

For the financial year, 44 Population Certificates were issued from 1 July 2024 – 30 June 2025.

**24.3.5. Flammable Storage inspection**

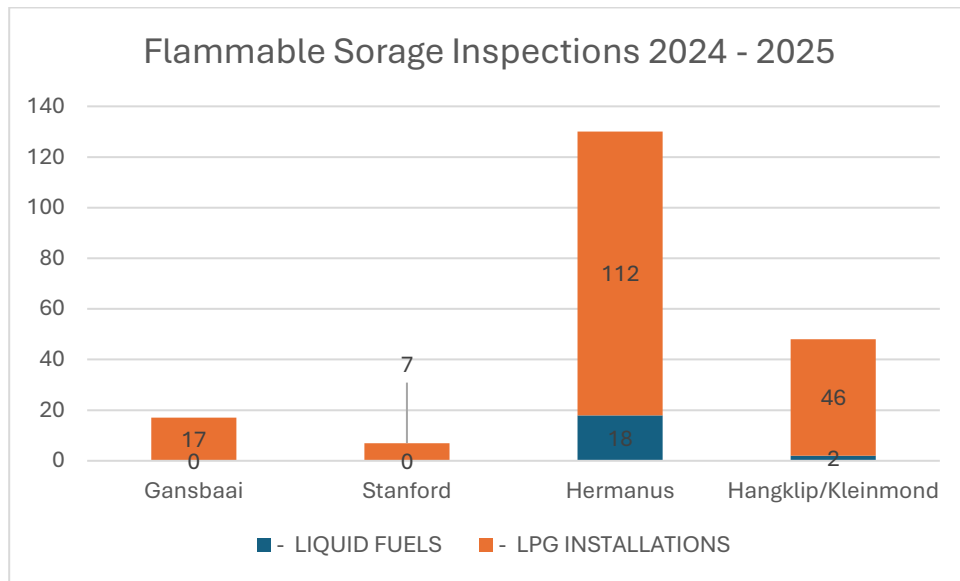


Chart 7: Flammable Storage inspections

For the financial year, 202 Flammable Storage Inspections were conducted from 1 July 2024 – 30 June 2025.

**24.3.6. Building Plan Screenings**

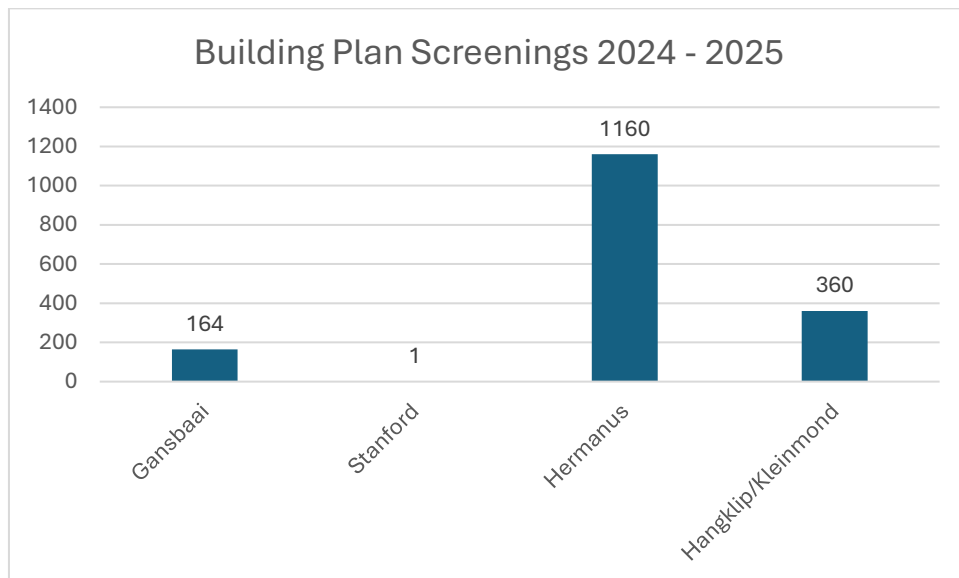
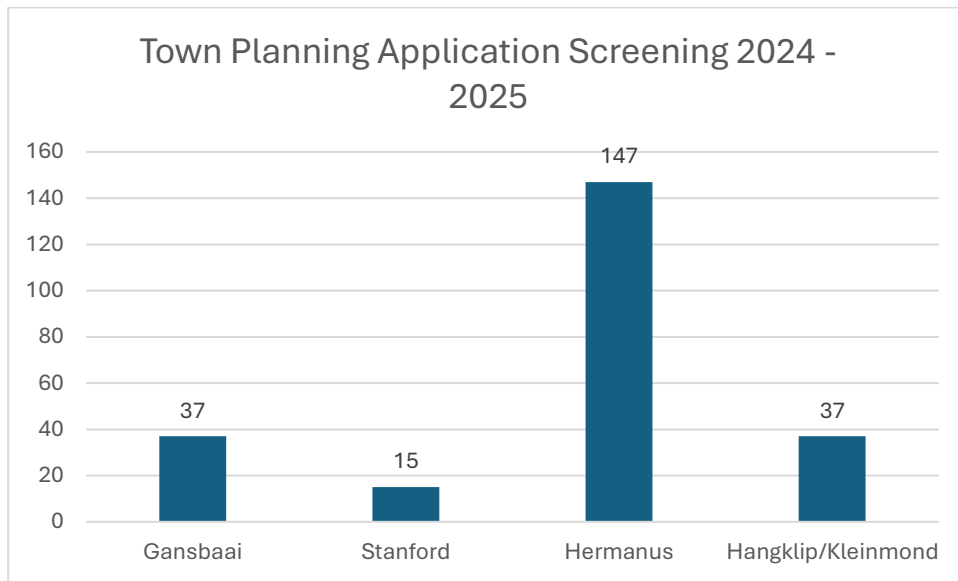


Chart 8: Building Plan Screenings

For the financial year, 1685 Building Plan Screenings were conducted from 1 July 2024 – 30 June 2025.

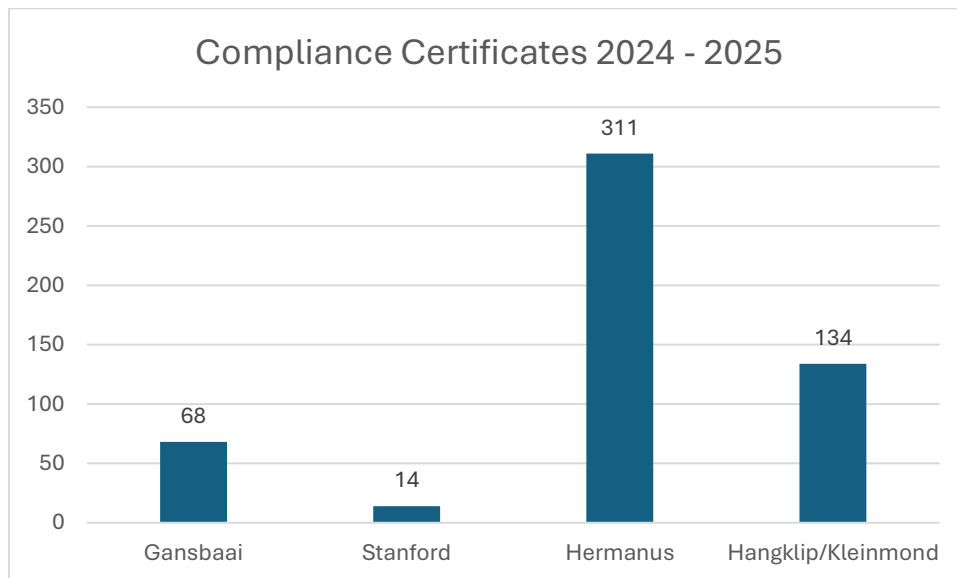
**24.3.7. Town Planning Application Screening**



*Chart 9: Town Planning Application screening*

For the financial year, 236 Town Planning Application Screenings were conducted from 1 July 2024 – 30 June 2025.

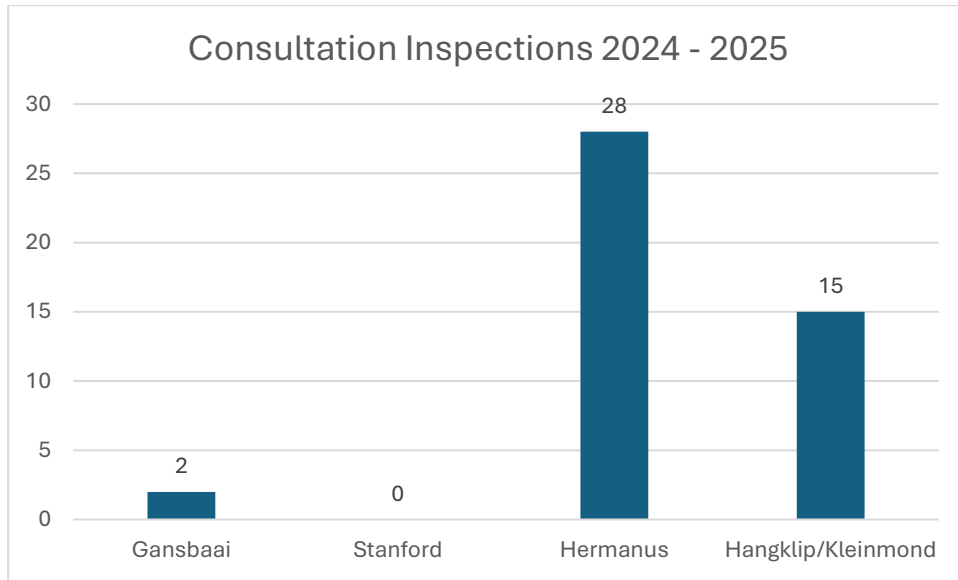
**24.3.8. Compliance Certificate**



*Chart 10: Compliance certificates*

For the financial year, 527 Compliance Certificates were issued from 1 July 2024 – 30 June 2025.

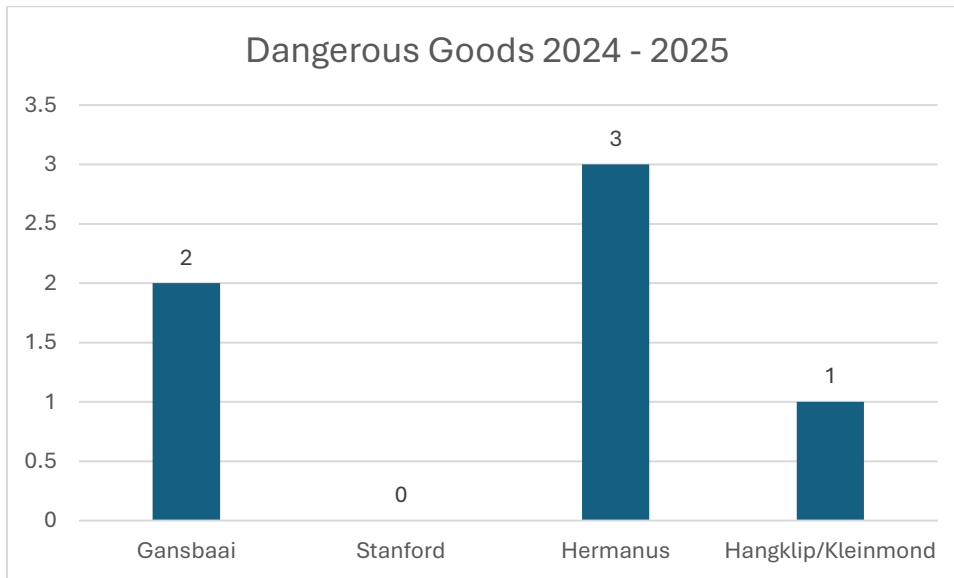
**24.4. Consultation inspections**



*Chart 2: Consultation inspections*

For the financial year, 45 Consultation inspections were conducted from 1 July 2024 – 30 June 2025.

**24.5. Dangerous goods**



*Chart 12: Dangerous goods*

For the financial year, 6 Dangerous Goods inspections were conducted from 1 July 2024 – 30 June 2025

## 24.6. Fire Hydrant Inspections

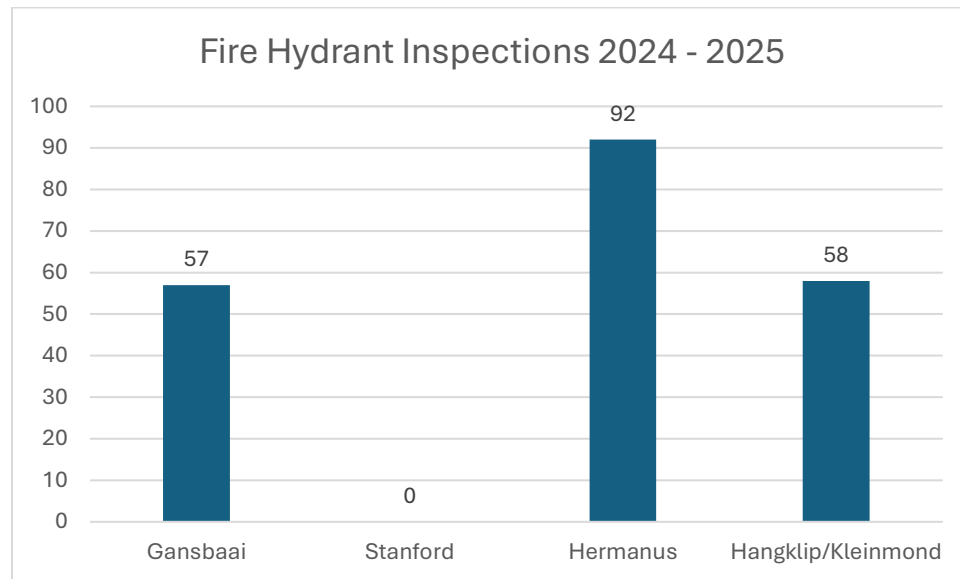


Chart 13: Fire hydrant inspections

Fire hydrants within the Overstrand Municipality involve two directorates, namely Infrastructure Services, who are overall responsible for fire hydrants and Municipal Public Safety who merely determine whether the hydrants are in working order in order for efficient and effective execution of duties.

The statistics provided above are based on actual inspections conducted and does not take into account the total number of fire hydrants which have been installed.

The Fire Department has started working hand in hand with the Infrastructure and Planning Directorate to improve the accuracy of data. Future statistics will look at reporting per suburb and will include the following:

- Expected total number of fire hydrants
- Actual number of fire hydrants found
- Faulty fire hydrants

All faulty fire hydrants will be reported to the Directorate: Community Services for repair work. Fire hydrant inspections are conducted in terms of SANS 1009: Community Protection Against Fire and consist of the following:

- check the position of the fire hydrant against existing data;
- flushing the hydrant (opening);
- check for the yellow FH mark;
- clean around the box;
- check for the manhole frame and cover; (cast iron manhole frames and covers are stolen for scrap)

The following are the challenges with our fire hydrants old infrastructure result in poor pressure and flow, high water table during winter result in waterlog fire hydrant manholes, different data sets, theft for scrap metal, delay in the repairing of the reported faults and the fire department do not have a flow meter to measure flow. The number of fire hydrants inspection done is not the total number of fire hydrants per area, some of the fire hydrants are not found due to the following reasons landowner plant grass, flowers over it, the fire hydrant is covered with paving or tar, or it's removed or moved. From 1 July 2023 – 30 June 2024, 1252, inspection was done and 1226 fire hydrant we found to be faulty and will be reported.

## **25. Overstrand Environmental Management & Conservation**

The Overstrand Environmental Management & Conservation division is responsible for environmental management and conservation to ensure integrity and preservation of the natural and cultural environment. In terms of municipal land, the division is responsible for management of zones marked Open Space 1. Both Environmental Management & Conservation and Fire, Rescue & Disaster Management work together to reduce areas deemed high risk, with the Fire Brigade playing a supporting role in the planning process and providing resources for controlled burning. During fire season, Overstrand Environmental Management & Conservation assist Fire, Rescue & Disaster with extended incidents by providing resources and crew who have received the basic firefighting training. Environmental Management work on a standby roster and activate the staff members who are on standby.

## **26. Strategic Policy**

The policy, Creating and Maintaining Fire-Wise Vacant Erven in Urban and Suburban Areas of the Overstrand Municipality, was under review and approved by Council on 28 September 2022. The Community Fire Safety By-law P.N. 6454/2007 is still under review.

The objective of the policies above is to reduce the fire hazards on overgrown properties and promote a fire-safe environment for the benefit of all people within the area of jurisdiction of the Overstrand Municipality.

## 27. Integrated Prescribed Burns

The following prescribed burns were conducted between 1 July 2024 – 30 June 2025:

Incident Reference	Incident Type	Incident Category	Incident Sub-Category	Date & Time of Incident	Suburb	Description	Dispatch Location	Address
WF-OFD-250515-02	veldfire	Prescribe Burn	Block Burn	15-05-2025 09:23	Caledon Regional District	Prescribe burn at Goedvertrou Farm.	Gansbaai Fire Station	Goedvertrou Farm, South Africa
WF-OFD-250414-01	veldfire	Prescribe Burn	Block Burn	14-04-2025 07:24	Caledon Regional District - Gansbaai	Grootbos Prescribe burn 2025 - Poor Burn	Gansbaai Fire Station	Grootbos, Gansbaai, South Africa
WF-OFD-241030-01	veldfire	Prescribe Burn	Block Burn	30-10-2024 09:12	Caledon Regional District	Prescribe burn Copul Farm	Gansbaai Fire Station	COPUL FARM STANFORD
WF-OFD-240730-01	veldfire	Prescribe Burn	Stack Burn	30-07-2024 10:28	Kleinbaai	Kleinbaai golf course - prescribed burn	Gansbaai Fire Station	Kleinbaai, Golf Course, South Africa

Excluding the Kleinbaai Golf Course, which was a stack burn, the total hectares of land burned during the period are 17ha.

## 28. Greater Overberg Fire Protection Association

Overstrand Fire & Emergency Services has a permanently appointed representative of goFPA for the municipal jurisdiction, the representative is responsible for liaison between Overstrand Municipality and their members. A Fire Protection Association is established in terms of chapter 2 of the National Veld and Forest Fire Act 101 of 1998.

The goFPA assisted us develop short term and long plans to prevent the destruction of property, agricultural land, fynbos biome etc. These actions assist to reduce the financial losses and all related secondary losses.

The entire Overstrand is divided into Fire Management Units (FMU) these FMU's bring likeminded people together to assist each other in a specific geographical area. Preventative planning also takes place between Overstrand Fire & Emergency Services, goFPA members and FMU leaders to reduce the risk of the outbreak and spread of wildfires in their area.

## 29. Overberg District Municipality and Disaster Management

The current Service level Agreement (SLA) which was implemented in November 2015 is being reviewed and new changes are proposed. Overberg District Municipality must ensure that they render the entire function across their jurisdiction in-terms of the Municipal

Structure Act, 117 of 1998 section 84 (1) (j) ii Specialized firefighting service such as mountain, veld, and chemical fire services. Overstrand Fire & Emergency Services will remain first responders in the areas outside the urban edge, and will call on Overberg

District Municipality if needed to send the necessary support which can include aerial resources, specialized ground teams etc.

When assistance is requested from Overberg District Municipality for a mountain or veld fire outside the urban edge transfer of command will take place between Overstrand and Overberg District Municipality. Overberg District Municipality will take full accountability of the incident in terms of their legal mandate as stipulated in the applicable legislation.

## SECTION G

### 30. Overstrand municipal area fire risks

Overstrand Municipal jurisdiction is geographically located within the fire-dependent fynbos biome. Alien infestation (such as Rooikrans, Port Jackson, Black wattle, etc). Increases in fire intensity, together with limited firefighting capacity, make Overstrand Municipality highly vulnerable to veld fires. The following areas are regarded as our red zone areas:

#### **Betty's Bay**

- Dawidskraal area, West towards Waterfalls (Blesberg)

#### **Pringle Bay**

- Wildland Urban interface (vacant plots and open spaces) Hangklip to Brodies Link

#### **Kleinmond**

- Entrance to Koggelberg Nature Reserve

#### **Hermanus**

- Mountain area Chanteclair (Leopard Rock via Glen Fruin towards along the Onrus Mountain towards Camphill (Peat Fire)
- Fernkloof Nature Reserve (Drie damme towards Kleinrivier Mountain along R43 and R326)

#### **Gansbaai**

- Walkerbay Nature Reserve
- Grootbos / Platbos Flower Valley, Avuka, and adjacent farms in the area
- Area between Stanford and Gansbaai (both sides of the R43)
- Dangerpoint / Kleinbaai area

## 31. Top fire risks

### Hangklip / Kleinmond area

Kleinmond is considered a medium fire risk due to its sudden urban interface and limited firefighting capacity (limited vehicles and personnel



Figure 1 Pringle Bay

### Rooiels

Rooiels is still considered a high risk because of the moderate fuel loads between residential structures and limited firefighting capacity, as well as the distance from Kleinmond Fire Station. Firefighting operations can quickly change from a house fire to a veld fire and vice versa, and this, under severe windy conditions, could be devastating.

**Pringle Bay**

A large part of Pringle Bay is considered a high risk, this is due to limited firefighting capacity, high fuel loads between residential structures, and the distance of Kleinmond Fire Station. Blesberg itself is considered a medium fire risk due to its

high fuel load and density. Once again, firefighting operations can quickly change from a house fire to a veld fire and vice versa.

**Betty's Bay**

Betty's Bay as a town is extremely vulnerable to veld fires, due to high fuel loads between residential structures and little firefighting capacity, limited access to residential and distance from Kleinmond Fire Station. Again, a house fire can escalate to a veld fire and vice versa, and under severe windy conditions, with disastrous consequences.



Figure 2 Kogelberg entrance

**Fisherhaven – Hermanus area**

The following areas are considered high fire risk:

- Area around the Meerenbosch (Fisherhaven)
- Area between Hawston and Vermont
- Area from Mountain Rose Farm towards Spookfontein
- Area around the Habonim and Curro School



*Figure 3 Berghoff - Camphill*

**Stanford – Gansbaai area**

The following areas are considered high fire risk:

- Platbos area
- Salmonsdam Nature Reserve
- Flower Valley area
- Grootbos area
- County Fair Chicken Farm area
- Wortelgat/Walkerbay area
- Kleinrivier Mountain area



*Figure 4 Stanford to De Kelders to Avuka Road*



*Figure 5 Wortelgat - Sopies Klip*

Stanford / Gansbaai area is experiencing rapid alien infestation, causing increases in fuel load, which forms a conduit for fires and sustained / rapid fire spread.



*Figure 6 Franskraal to Pearly Beach*

## SECTION H

## 32. Emergency contact numbers

<b>FIRE, RESCUE AND DISASTER MANAGEMENT</b>		
Protection Services Emergency Control Room		028 312 2400
<u>Name /Surname</u>	<u>Short number</u>	<u>Cell number</u>
<b>FIRE SERVICES</b>		
Lester Smith	6805	082 978 9493
Enrico Solomon	6035	076 011 5052
Angelo Aplon	6048	079 507 7297
Ebriam Isaacs	6319	079 139 3867
Gallie Badenhorst	6358	072 142 4488
Adam Mars	6527	071 021 6217
Jaco Stemmet		072 1288 488
Cecil (Justin) Brussel		061 313 5566
Turlo Samuels		081 444 9383
Shaun Mackay		073 288 2420
Sarolyn Coert	6518	081 839 0154
Meagan Carelse	6517	061 4266 564
Patricia Snyders		078 796 5317
Lucia Swartz		072 105 7059
<b>DISTRICT FIRE SERVICES</b>		
CFO R. Geldenhuys		083 273 8234
<b>PROVINCIAL FIRE AND DISASTER MANAGEMENT</b>		
Ettienne du Toit		021 937 6357 / 073 995 1609
Marlu Rust		021 937 6334 / 071 481 9437
<b>GREATER OVERBERG FPA</b>		
Louise Wessels		083 327 0477
Mitch Afrika		067 234 1530
<b>TRAFFIC, LAW ENFORCEMENT &amp; SECURITY SERVICES</b>		
Rudi Frazer	6278	082 449 6751
Xen Titus	6169	082 596 6270
Philip de Gruchy		073 651 3677
Johan du Toit	6349	076 970 5481
Peter Marais		062 290 6334
Dawie Esau		072 575 3965
Ryan Stewart		081 349 7689
<b>OVERSTRAND ENVIRONMENTAL SERVICES</b>		
Liezl de Villiers	6485	082 735 8910
<b>SAPS</b>		
Hermanus		028 313 5300
Kleinmond		028 271 8200
Stanford		028 341 0601
Gansbaai		028 384 0201
<b>BETTY'S BAY and PRINGLEBAY</b>		
Bettysbay Standby		076 14664512
Pringlebay Standby		081 3334685
Betty's Bay Rate Payers Association		082 808 1564 (Bill Steyn)
Betty's Bay Neighbourhood Watch		072 015 5729
<b>EXTERNAL RESOURCES</b>		
VWS	N/A	072 126 6937
NCC		
WOF		
Kishugu Aviation		