

**AGENDA of the  
Portfolio Committee : Municipal Public Safety  
1 October 2024  
(Also the agenda for the Mayoral Committee Meeting : 16 October 2024)**

---

**3.  
FIRE, RESCUE & DISASTER MANAGEMENT 2024-2025 FESTIVE SEASON PLAN**

**NJ Michaels  
13 September 2024**

**Director: Municipal Public Safety**

**(028) 313 8054**

---

**1. Executive Summary**

The purpose of this report is to take note of the 2024 – 2025 Festive Season Plan for Fire, Rescue & Disaster Management.

**2. Service Delivery and Budget Implementation Plan - IGNITE**

Directorate: Municipal Public Safety  
Fire, Rescue & Disaster Management

**3. Compliance with Strategic Priorities**

Provision of democratic, accountable and ethical governance  
Provision and maintenance of municipal services  
Creation and maintenance of a safe and healthy environment

**4. Delegated Authority**

Executive Mayor

**5. Legal Requirements**

Constitution of the Republic of South Africa, 1996  
SANS 10090: Community Protection Against Fires  
Fire Brigade Services Act, Act 99 of 1987  
Community Fire Safety By-law, P.N. 6454/2007  
By-laws of the Overstrand Municipality  
Service Delivery Budget Implementation Plan

**6. Background/Discussion/Evaluation/Conclusion**

**Background**

The estimated population for the Overstrand Municipality is approximately 132 495 people (as extracted from official Overstrand Municipality website). During times of festival and season, it is known for the population to increase with up to 50%.

**AGENDA of the  
Portfolio Committee : Municipal Public Safety  
1 October 2024  
(Also the agenda for the Mayoral Committee Meeting : 16 October 2024)**

---

**Discussion**

The Festive Season Plan highlights the operational readiness of the Fire & Emergency Services, Disaster Management and Security Services between the so named “festive season” which will run between 6 December 2024 and 12 January 2025.

The aim of the festive season plan is to identify, reduce, or prevent incidents from happening and soften the impacts of those incidents that are inevitable

**7. Financial Implications**

In accordance with budget provision

**8. Staff Implications**

None

**9. Comments from other Departments, Divisions and Administrations**

None

**10. Annexures**

Annexure A: Fire, Rescue & Disaster Management 2024 – 2025 Festive Season Plan

**RECOMMENDATION:**

that the Fire, Rescue & Disaster Management 2024 – 2025 Festive Season Plan **be noted.**

**RESPONSIBLE OFFICIAL :**

**NJ MICHAELS  
L SMITH**

**TARGET DATE FOR IMPLEMENTATION :**

**1 NOVEMBER 2024**





# FESTIVE SEASON PLAN

2024 - 2025



Fire, Rescue & Disaster Management

L. Smith

Chief: Fire, Rescue & Disaster Management

Contents

1. **PURPOSE**..... 2

2. **AIM**..... 2

3. **OBJECTIVES** ..... 2

4. **DEFINITIONS** ..... 2

5. **OVERSTRAND FIRE & EMERGENCY SERVICES ORGANOGRAM** ..... 3

6. **OVERSTRAND FIRE & EMERGENCY SERVICES FLEET** ..... 11

7. **SWOT ANALYSIS**..... 13

8. **HERMANUS, KLEINMOND & GANSBAAI FIRE STATIONS**..... 14

9. **SAFETY AND SECURITY AND CCTV** ..... 15

10. **DISASTER MANAGEMENT** ..... 16

11. **FIRE SAFETY** ..... 16

12. **INCIDENT COMMAND AND EMERGENCY CONTROL**..... 17

13. **SENIOR DUTY OFFICER** ..... 18

Events..... 19

Events..... 20

14. **CALL OUT PROCEDURES** ..... 21

15. **FESTIVE SEASON MITIGATION STRATEGY** ..... 22

16. **POSSIBLE FUNDING IMPLICATIONS & DEVIATION FROM NORMAL SUPPLY CHAIN PROCEDURE DURING EMERGENCIES** ..... 23

#### 1. **PURPOSE**

The purpose of this strategy is to focus on the management of potential emergency threats.

#### 2. **AIM**

To identify, reduce or prevent incidents from happening and soften the impact of those incidents that are inevitable.

#### 3. **OBJECTIVES**

To improve emergency incidents from happening and soften the impact of those incidents that are inevitable.

#### 4. **DEFINITIONS**

**Disaster:** means a progressive or sudden, widespread or localized, natural or human-caused occurrence which

##### **a) Causes or threatens to cause**

- i. Death, injury or disease;
- ii. Damage to property, infrastructure or the environment or;
- iii. Disruption to the life of a community; and

##### **b) Is of a magnitude that exceeds the ability of those affected by the disaster to cope with its effects using only their own resources (refer to disaster management)**

**Disaster Management:** means a continuous and integrated multi-sectoral, multi-disciplinary process of planning and implementation of measures aimed at:

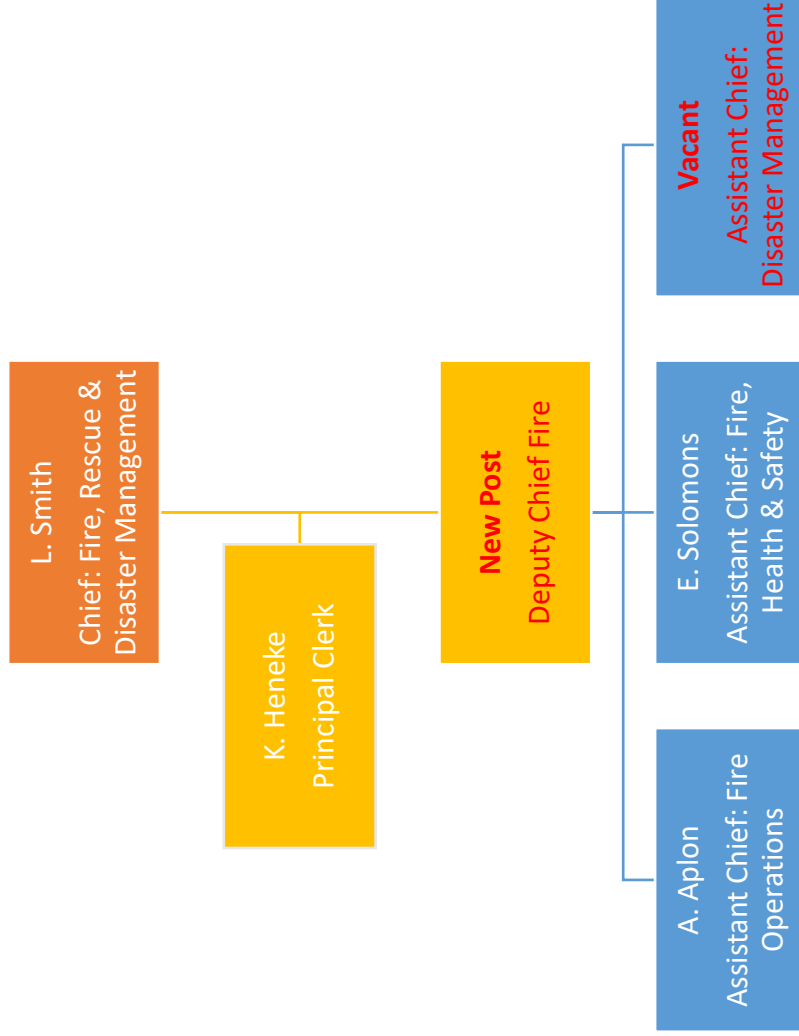
- a) Preventing or reducing the risk of disasters;
- b) Mitigating the severity or consequences of disasters;
- c) Emergency preparedness;
- d) A rapid and effective response to disasters, and
- e) Post-disaster recovery and rehabilitation.

**Major Incident:** means when an emergency requires additional or external resources to bring the situation (**emergency**) under control. Activation of these resources is done by the Chief Fire Officer or Incident Commander after approval is granted by the Director or MIM (Municipal Manager)

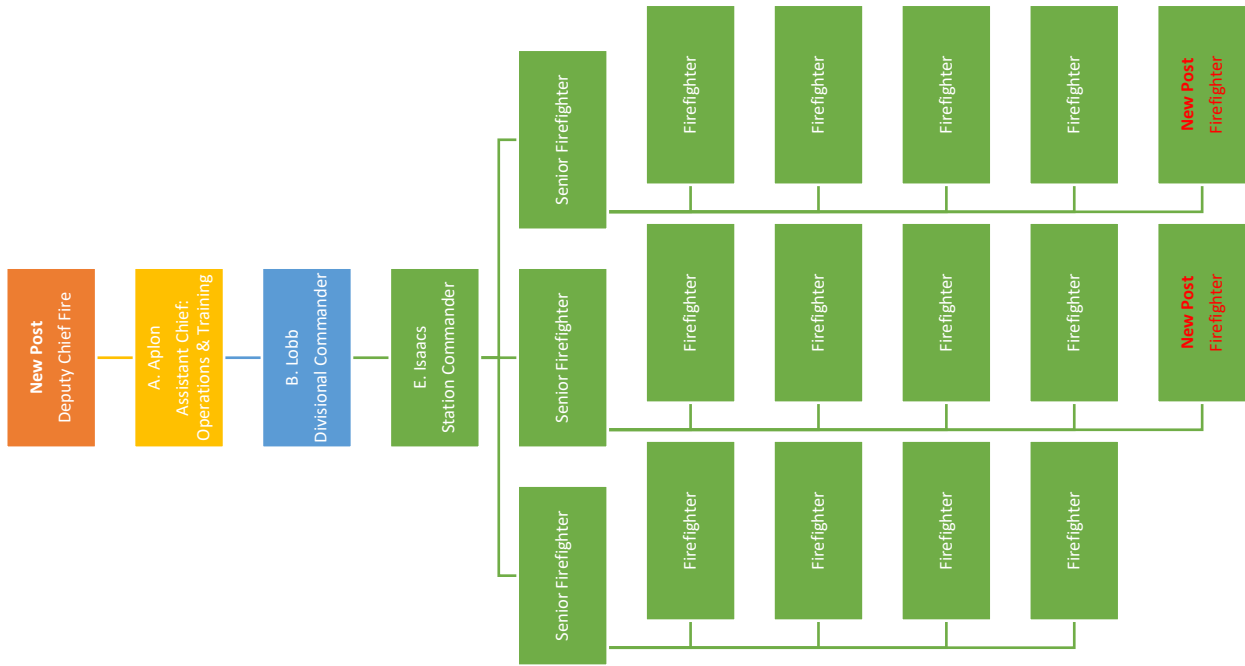
**Emergency:** means situation that poses an immediate risk to life, health, property or the environment and normal procurement procedures cannot be followed.

5. OVERSTRAND FIRE & EMERGENCY SERVICES ORGANOGRAM

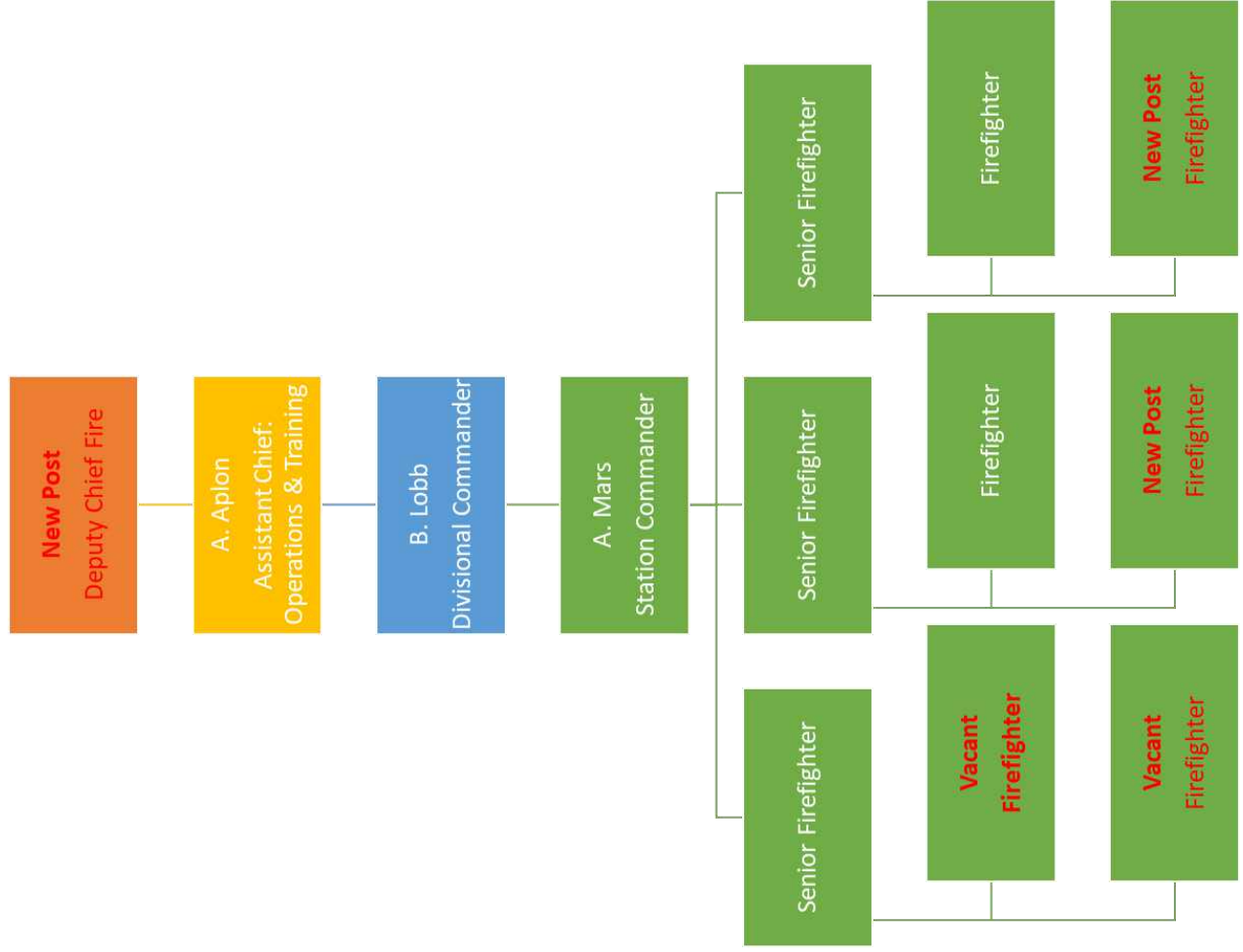
5.1. Top Management Team



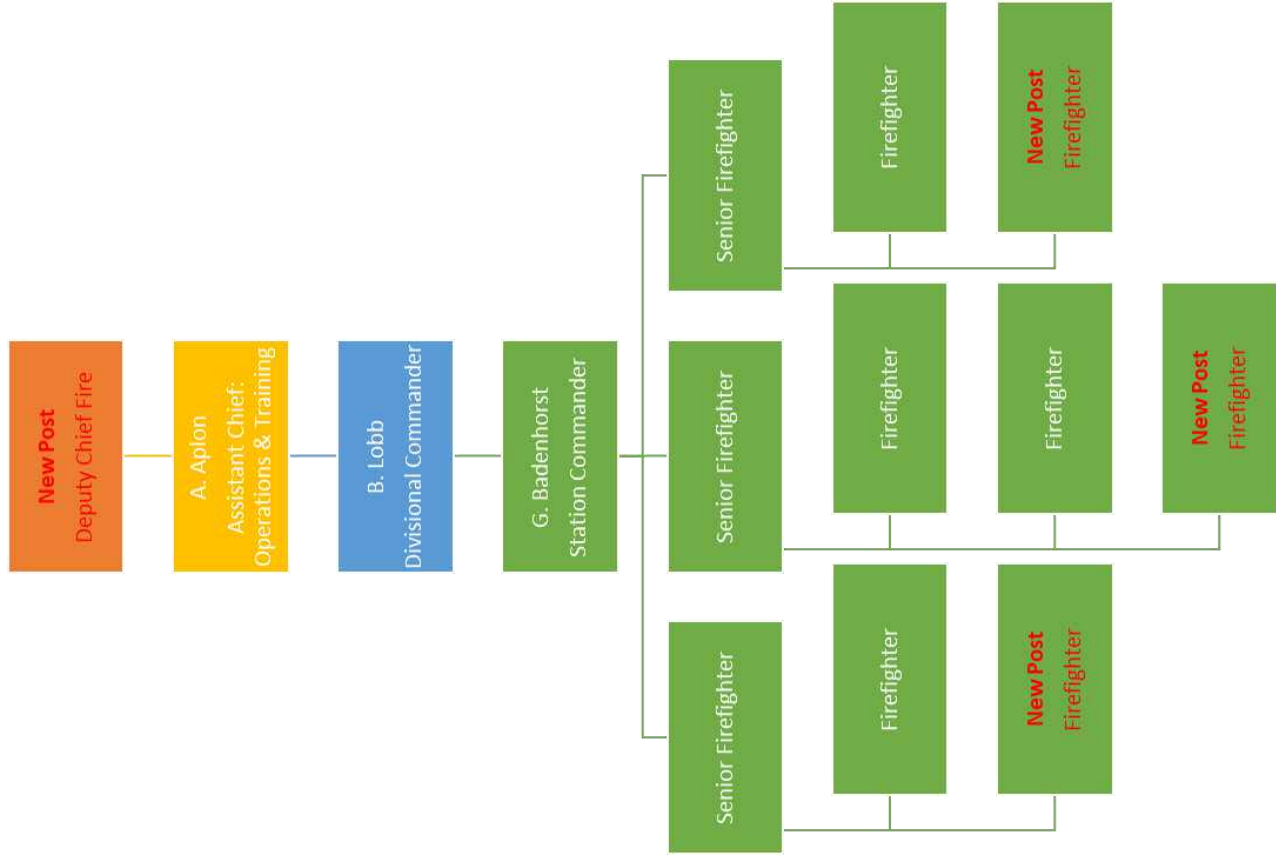
5.2. Hermanus



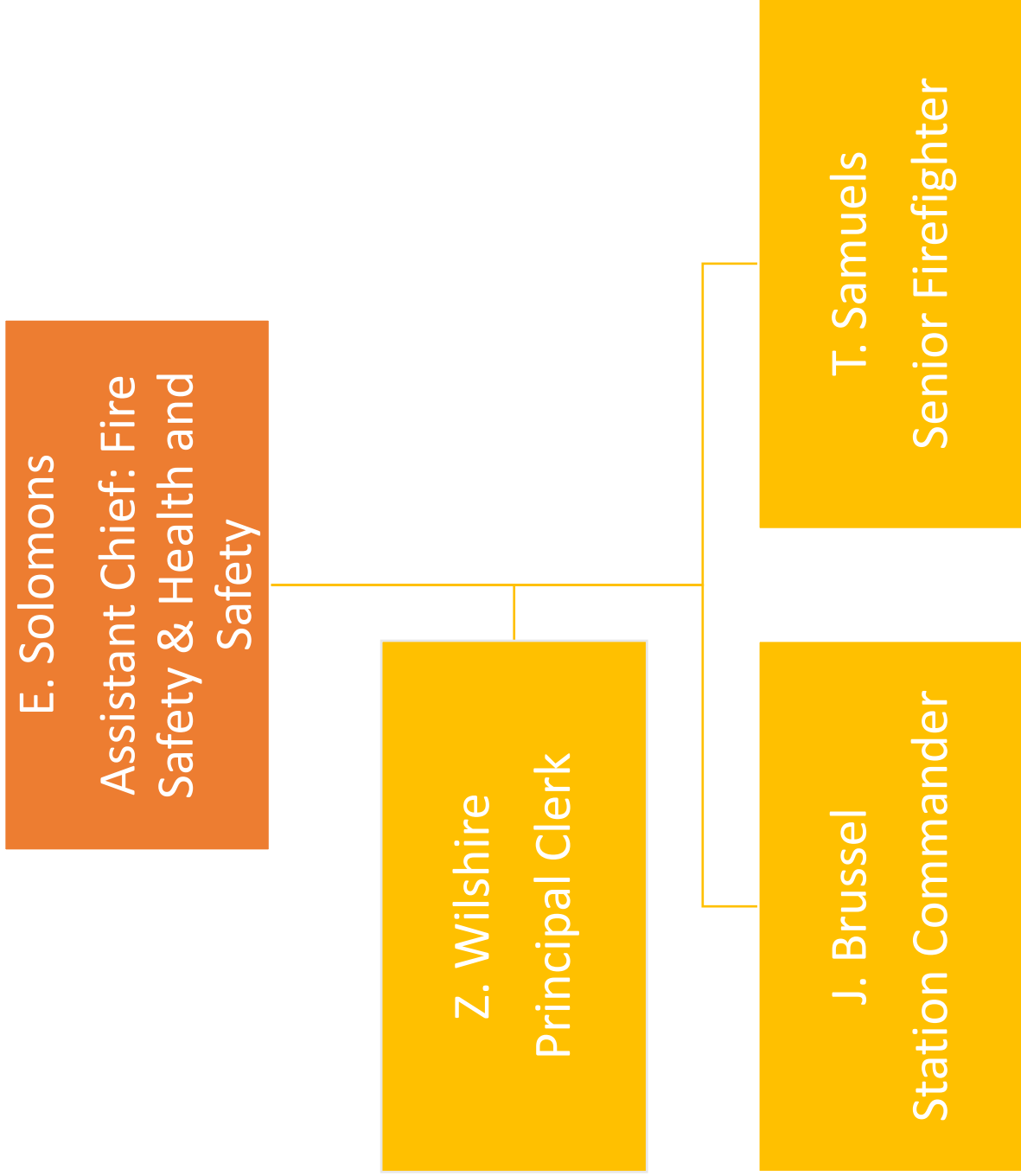
### 5.3. Kleinmond



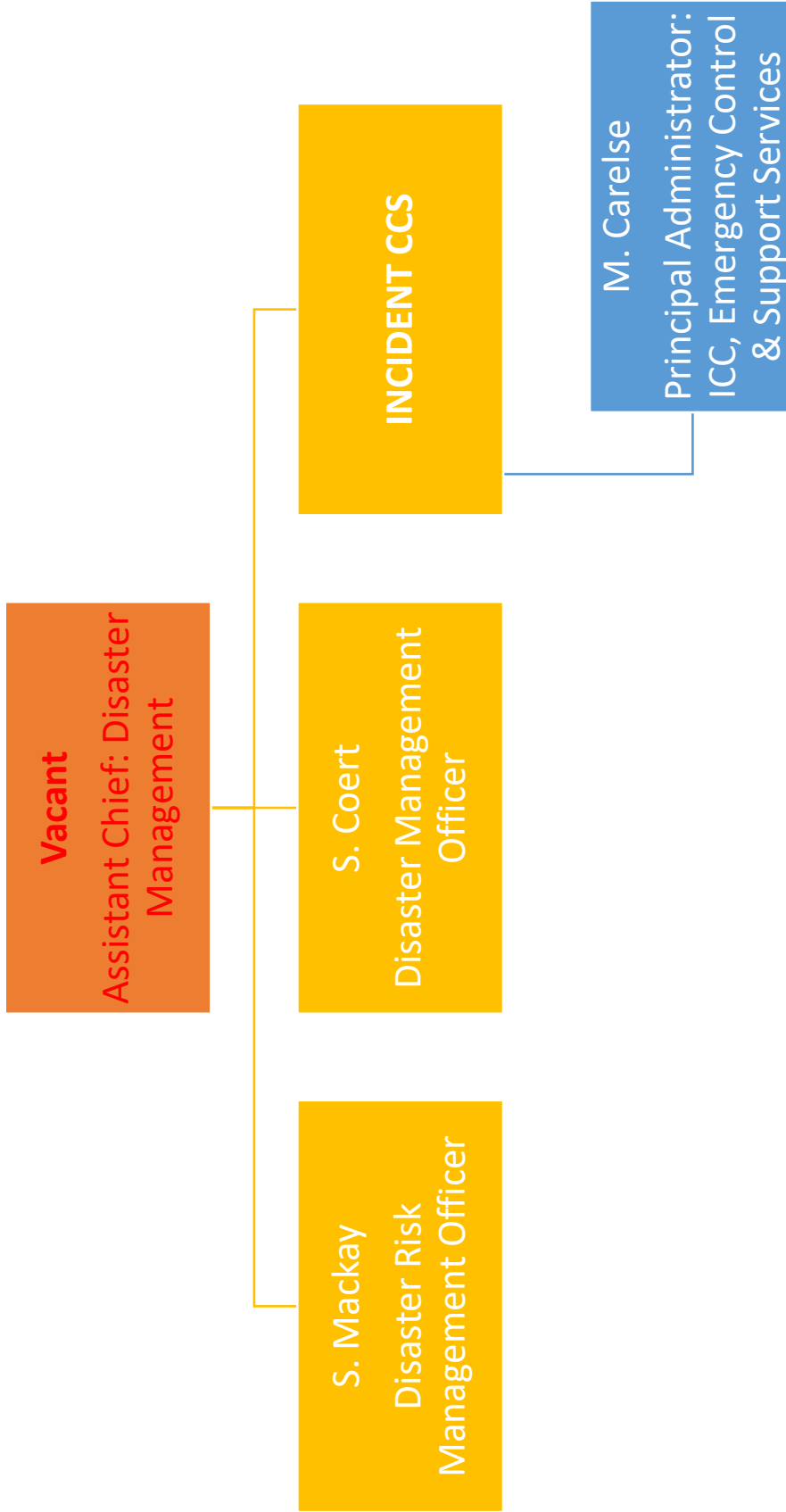
5.4. Gansbaai



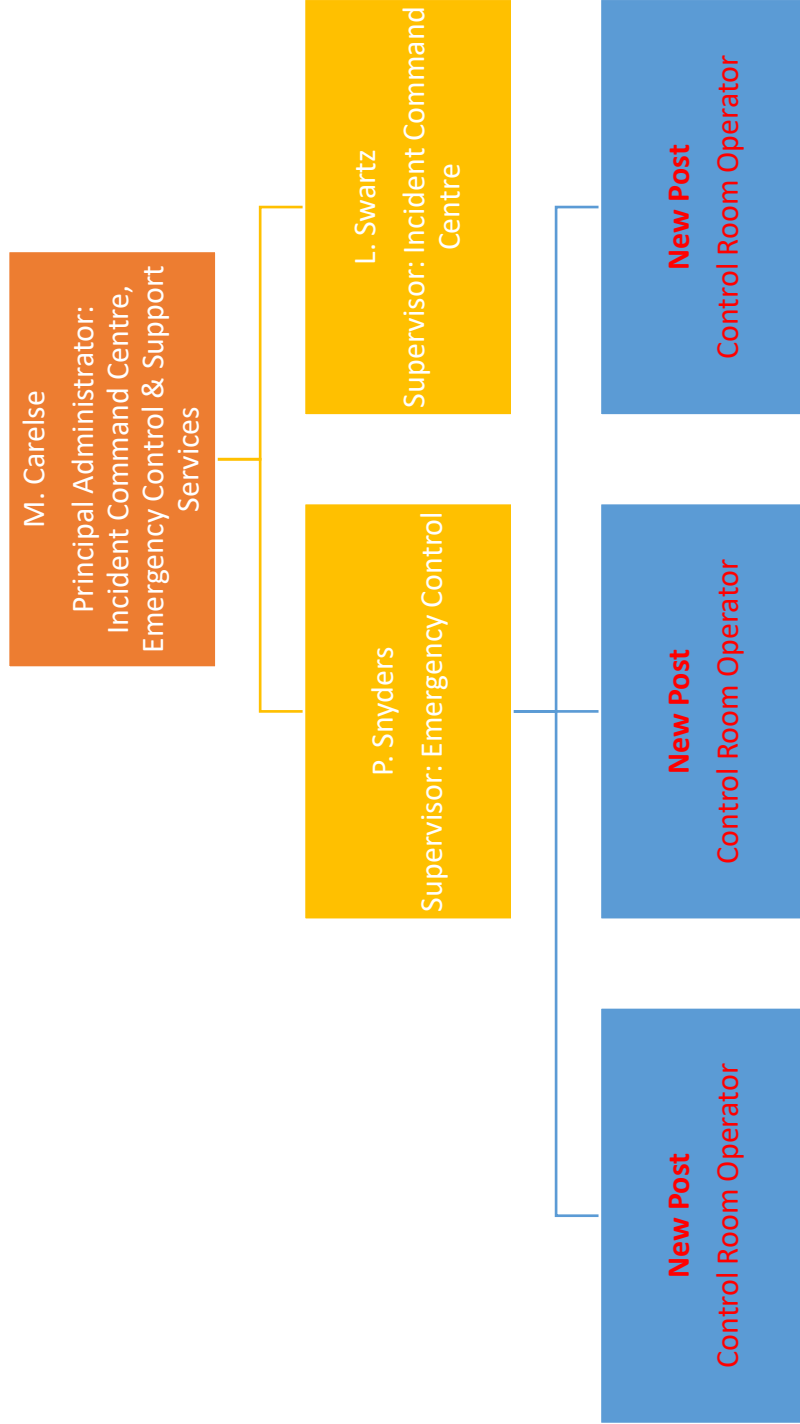
5.5. Fire Safety



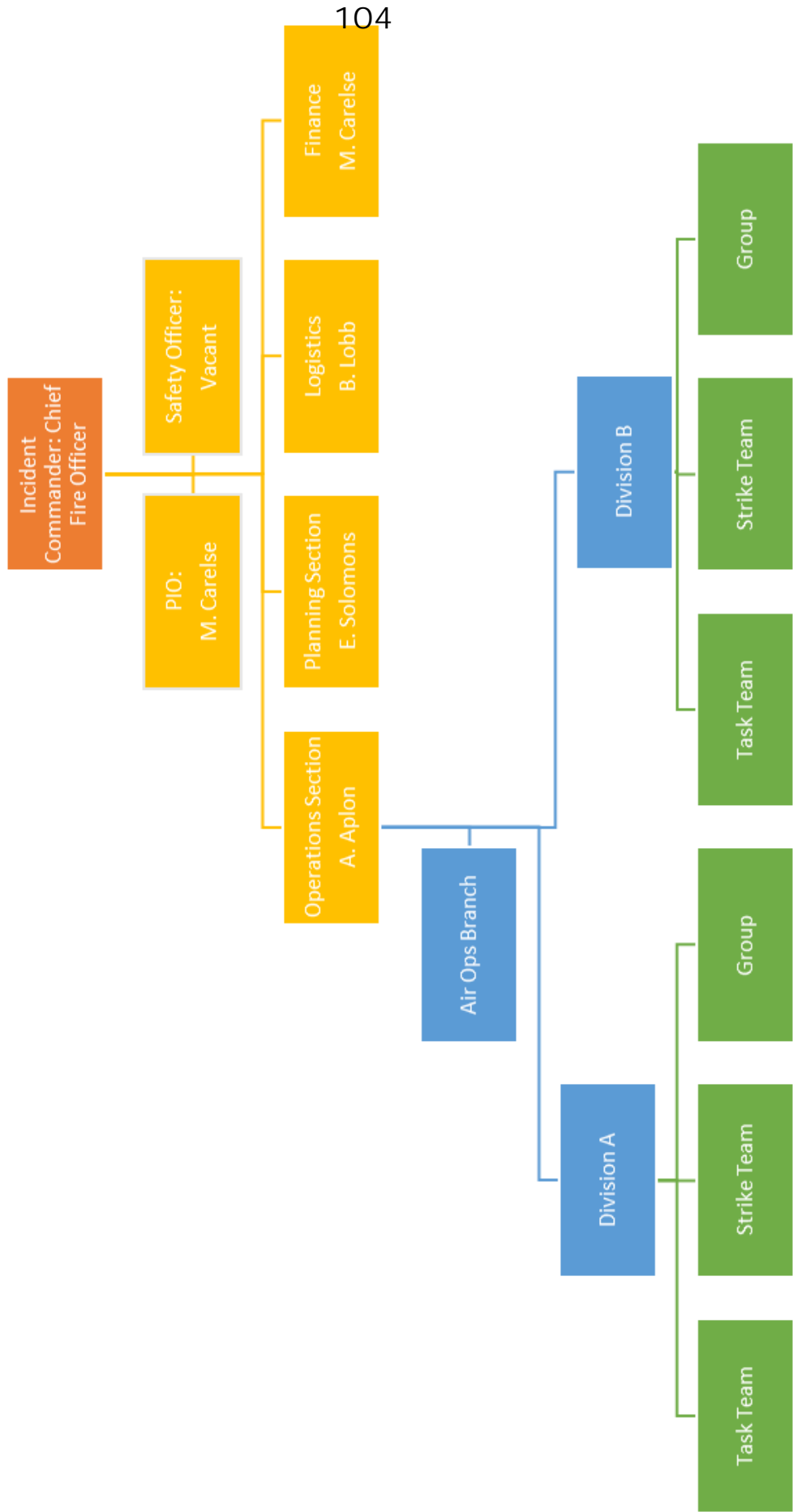
5.6. Disaster Management



### 5.7. Incident Command, Emergency Control & Support Services



5.8. Proposed Incident Command Structure



6. OVERSTRAND FIRE & EMERGENCY SERVICES FLEET

CALL SIGN	REG NUMBER	STATUS	LOCATION	DESCRIPTION	CLASS	Model Year
<b>COMMAND VEHICLES</b>						
Delta 1	CEM 23400	On run	Hermanus	Nissan Navara 2.5 TD LWB 4X4	Mobile Command Vehicle – Disaster Management	2015
CV 1	CEM 44444	On run	Hermanus	Ford Ranger DC 4X4	Mobile Command Vehicle	2018
<b>MAJOR PUMPERS</b>						
Engine 1-1	CEM 37463	On run	Hermanus	Mercedes Benz Ateco 1328	Major Pumper type I	2014
Engine 2-1	CEM 7532	On run	Gansbaai	Iveco (4X4)	Major Pumper type III	2019
Engine 3-1	CEM 10226	On run	Kleinmond	Mercedes Benz Ateco 1328	Major Pumper type III	2009
<b>PUMPERS</b>						
Pump 1	CEM 30714	On run	Hermanus	Toyota Hino 4X4	All Terrain Appliance	2018
Pump 2	CEM 48495	On run	Gansbaai	Isuzu FTS 750	All Terrain Appliance	2019
Pump 3	CEM 2869	On run	Gansbaai	Tata 713C 4X4	All Terrain Appliance	2006
Pump 5	CEM 48493	On run	Hermanus	Isuzu FTS 750	All Terrain Appliance	2019
Pump 6	CEM 1626	On run	Pringle Bay	Mercedes Buffel	All Terrain Appliance	1982
Pump 7	CEM 21426	On run	Kleinmond	Isuzu FTS 750	All Terrain Appliance	2019
<b>SKID UNITS</b>						
Alpha 1	CEM 44284	On run	Hermanus	Toyota Landcruiser	Skid Unit	2018
Alpha 2	CEM 32828	On run	Stanford	Toyota Landcruiser	Skid Unit	2011
Alpha 3	CEM 28939	On run	Kleinmond/ Pringle Bay	Toyota Landcruiser	Skid Unit	2019
Alpha 4	CEM 12594	On-run	Gansbaai	Ford Subercab 2.2 4x4	Skid Unit	2020
Alpha 7	CEM 6556	On-run	Kleinmond	Ford Ranger Supercab 2.2 4x4	Skid unit	2020
<b>SUPPORT VEHICLES</b>						
SV01	CEM 38652	OFF Run	Hermanus	Volkswagen Polo Vivo 1.4	Support Vehicle	2015

<b>SV02</b>	CEM 47688	On run	Control Room	Volkswagen Sedan	Polo	Support Vehicle	2019
<b>SV03</b>	CEM 42054	On run	Kleinmond	Nissan NP 300		Utility Vehicle	2017
<b>SV04</b>	CEM 30870	On Run	Hermanus	Ford Ranger Cab	Single	Utility Vehicle	2019
<b>SV05</b>	CEM 8219	On run	Fire Safety	Ford Ranger DC	XL 4x2	Support Vehicle	2021
<b>SV06</b>	CAM 13012	On run	Betty's Bay	Nissan Hardbody 4x2 1-ton LDV	2.0	Bakkie Unit	2007
<b>SV07</b>	CEM 42270	On run	Control Room	VW POLO SEDSN		Support Vehicle	
<b>SV08</b>	CEM 11565	On run	Hermanus	Ford Ranger DC	XL 4x2	Utility Vehicle	2021
<b>SV09</b>	CEM 13116	On run	Safe & Security	Ford Ranger DC	XL 4x2	Utility Vehicle	2021
<b>SV10</b>	CEM 33893	On run	Safety & Security	VW POLO SEDAN		Utility Vehicle	
<b>SV11</b>	CEM 44285	On run	Safety & Security	Toyota Corolla		Support Vehicle	
	CEM 14938	OFF run		Toyota Hilux 2.7i 4x4		Utility Vehicle	2006
	CEM 23784	On run		Nissan NP300 4X4	Hardbody	Utility Vehicle	2011
<b>TRAILERS</b>							
Tango 1	CAM 4600	On run	Stanford	Trailer – Rope Rescue			
Tango 2	CAM 4601	On run	Stanford	Trailer – Hazmat			
Tango 3	CAM 1266	Off Run	Gansbaai	Trailer – Portable dam			
Tango 4	CEM 3366	On run	Betty's bay	Trailer- Skid unit			
Tango 5	CEM 25651	On run	Baardskeedersbos	Trailer -Skid Unit			
Tango 6	CAM 30979	On run	Kleinmond	Trailer – SCBA compressor			
Tango 7	CEM 2740	On run	Stanford	Temp ICC ICP/JOC equipment			
NB: Senior Officers must utilize marked municipal vehicles with the necessary radio communication for Command and Control of incidents during major incidents, marked vehicles must also be utilized when communicating with ground resources and aerial support. Municipal or marked vehicles are easily identifiable to the general public. Due to the nature of our inherent fire risk and history of fire related incidents, incident commanders must use municipal vehicles to communicate with other agencies, e.g. WOF, ODM, SAPS, WCEMS etc.							

## 7. SWOT ANALYSIS

### Strengths

- Dynamic Leadership
- In the process of addressing Infrastructure, Vehicles, Personnel, Training
- Strong Organizational Structure
- Command Structure (ICS Principles)
- Disciplined Fire Fighters
- 24/7 Available Fire, Rescue and Disaster Management Service
- Hermanus Fire Station Shift System
- All available Fire Engines will be place at strategic point during New Year's eve celebration and in Mid and Post season from 6 December 2024 until 12 January 2025
- at Pringle Bay, Rooi Els, Betty's Bay, Kleinmond Main beaches,
- Grotto Beach, Fisherhaven , Municipal Stores and the Pools at Hawston, as well as
- Uilenkraalsmond, Stanfordsbaai, Franskraal and Pearly Beach with staff compliment.

### Weakness

- Limited Infrastructure
- Limited Vehicles (vehicles taken out of service)
- Condition of Vehicles (mechanical failure)
- Limited Equipment
- Condition of Equipment (deteriating equipment)
- Limited Personnel (Man Power)
- One turn out per shift
- Limited Trained Personnel
- Level of Training
- Gansbaai and Kleinmond limited shift system
- Limited Funding

### Opportunities

- Each veld fire incident provides an opportunity to reduce fuel (vegetation)
- Festive season period offers a unique opportunity to apply skills and gain experience in the fire, rescue and disaster management environment
- Opportunity to Create an Safe Environment for Communities, Visitors and Tourists

### Threats

- Fires
- Structural (Formal, Informal, Commercial, Industrial)
  - Veld Fires
- Motor vehicle/ pedestrian accidents
- Boating accidents (Sea/ Lagoon)
- Para-glider accidents
- Hiking accidents
- Drowning accidents (sea, lagoon, swimming pools, rivers)
- 107
- Threat Drivers**
- Influx of visitors, tourists .
- Weather (dry, windy, high temp), Topography (limited access) and Vegetation (age/density/type ect)
- Extended Fire Season
- Multiple incidents or Extended Fire Rescue and Disaster Incidents

**8. HERMANUS, KLEINMOND & GANSBAAI FIRE STATIONS**

Hermanus, Kleinmond and Gansbaai Fire Stations are currently operating on a 24-hour basis, with shifts commencing at 09:00. The 24-hour shifts came into effect as from 1 July 2022. Each shift consists of at least the following staffing complement:

<b>KLEINMOND</b>	<b>HERMANUS</b>	<b>GANSBAAI</b>
1x Station Commander	1x Station Commander	1x Station Commander
1x Senior Firefighter	1x Senior Firefighter	1x Senior Firefighter
2x Firefighter	4x Firefighter	2x Firefighter

- 8.1. At least one Station Commander and three Senior Firefighters will be on duty per 24 hours operational period, this is to ensure proper 24/7 Command and Control structure.
- 8.2. Fire Operations will be augmented during office hours by a Platoon Commander, 1 x Fire assistant and 1 x admin support for technical and logistical incident support.
- 8.3. All three Fire Stations will be manned by permanent staff 24/7
- 8.4. Incident Management Teams (IMT teams) will also be available and will consist of at least the following 1 x Senior Officer, 1 x Senior Control operator, 1 x Fire Safety Official, 1 x Disaster Management official and 1 x Operational Support, their sole mandate is Incident Management. They will open and manage the Incident Command Post (ICP) for the duration of the incident. They will be responsible for the liaison between all the different role players.
- 8.5. Off-duty staff will be on a rotational standby roster, at any given time with at least four additional firefighters and one supervisor on standby per day.
- 8.6. Three reservist Firefighters will also be on duty on a rotational roster.

- 8.7. Seventeen Community Volunteers will be available in Betty's Bay and Pringle Bay.
- 8.8. A Brigade Call out can be instructed for all off-duty firefighters .
- 8.9. All available fire engines will be placed at strategic points during the festive season and New Year's Eve celebrations from 6 December 2024 until 12 January 2025.

#### 9. **SAFETY AND SECURITY AND CCTV**

- 9.1. As the division only consists of 2 (two) permanent officials, the day to day operations are conducted by temporary staff (Chrysalis Interns). All temporary staff report to the Senior Inspector: Law Enforcement and CCTV.
- 9.2. Safety and Security and CCTV consist of the Public Safety Officer, CCTV Controller and Access Controller. Public Safety Officers will rotate as per the strategic points identified during the festive season and New year's Eve celebrations from 4 December 2023 until 8 January 2024.
- 9.3. The Public Safety Officers will assist the Fire division at incidents by assisting with crowd control and logistical arrangements. The Public Safety Officers will assist the Law Enforcement division with any operational grid plans as needed and conduct regular inspections at municipal sites, issue fines to transgressors enforcement of municipal by-laws.
- 9.4. A motivation will be submitted to the Director: Directorate: Municipal Public Safety as and when the need arise to bring in additional temporary staff on overtime.
- 9.5. Public Safety Officers and CCTV Controllers are currently working 12-hours per day, with shifts commencing at 06:00 and ends at 18:00. Access Controllers operate as per the norm according to day workers (Monday – Friday 07:45 till 16:30, excluding public holidays).
- 9.6. The 12-hour roster for Safety and Security is rostered on the CAD (Computer Aided Dispatch)

9.7. Refer to the Senior Duty Roster for standby officials (permanent).

## **10. DISASTER MANAGEMENT**

- 10.1. Disaster Management operates as per the norm according to day workers (Monday – Friday 07:45 till 16:30, excluding public holidays).
- 10.2. Disaster Management officers will be activated to assist at extended wildfire attacks, structural fires (specifically backyard and informal dwellings), severe weather warnings and social distress incidents, amongst other.
- 10.3. A motivation will be submitted to the Director: Directorate: Municipal Public Safety as and when the need arise to bring in temporary staff on overtime.
- 10.4. Refer to the Senior Duty Roster for standby officials (permanent)

## **11. FIRE SAFETY**

- 11.1. Fire Safety operates as per the norm according to day workers (Monday – Friday 07:45 till 16:30, excluding public holidays).
- 11.2. Fire Safety officers will be activated to assist at extended attacks, may be called to assist at structural fires (specifically backyard and informal dwellings), severe weather warnings and social distress, amongst other.
- 11.3. Fire Safety officers may particularly be activated after hours to assist Law Enforcement Agencies with compliance at liquor establishments such as bars and taverns (both legal and illegal), and any other establishment as deemed to have the need for fire safety compliance.
- 11.4. A motivation will be submitted to the Director: Directorate: Municipal Public Safety as and when the need arise to bring in temporary staff on overtime.

11.5. Refer to the Senior Duty Roster for standby officials (permanent).

## 12. INCIDENT COMMAND AND EMERGENCY CONTROL

- 12.1. The Incident Command Centre is still in renovation phase and is subject to completion due to budget availability. In the event of a major incident or disaster a temporary facility will be established.
- 12.2. The division only consists of 3 (three) permanent officials, the day-to-day operations are conducted by temporary staff. All temporary staff report to the Principal Administrator: Incident Command Centre, Emergency Control & Support Services.
- 12.3. Currently only 5 of the 8 temporary Emergency Control Room Operators are appointed, with 3 vacancies. During the festive season 2 Emergency Control Room Operators must be on duty to deal with the high volume of calls due to the anticipated influx of visitors into Overstrand (increase in population up to 50% as per the 2022/2023 Disaster Management Plan)
- 12.4. The Emergency Control Room receives all calls for the Directorate: Directorate: Municipal Public Safety and transfers to the relevant department or dispatches the necessary crew or officers.
- 12.5. The Emergency Control Room operates on a 24-hour basis, with 12-hour shifts commencing at 06:00.
- 12.6. A motivation will be submitted to the Director: Directorate: Municipal Public Safety as and when the need arise to bring in temporary staff on overtime (operators can be utilized for the emergency control room or when there is an extended wildfire occurring as part of the logistics team)
- 12.7. The 12-hur roster for Incident Command and Emergency Control is rostered on the CAD (Computer Aided Dispatch)

12.8. Refer to the Senior Duty Roster for standby officials (permanent)

**13. SENIOR DUTY OFFICER**

Assistant Chief Fire Officer or his delegate will be available during office hours. A Senior Officer will be on standby after hours and on weekends. Refer to the shift roster from November 2023 – May 2024.

# December

# 2024

Monday	Tuesday	Wednesday	Thursday	Friday	Saturday	Sunday
						1 Aplon, Turlo, Shaun, Verdia, Esric, Pat, Isaacs
2 Stemmet, Mars, Justin, Meagan, Sarolyn, Mars, Chief Smith	3 Stemmet, Mars, Justin, Meagan, Sarolyn, Mars, Chief Smith	4 Stemmet, Mars, Justin, Meagan, Sarolyn, Mars, Chief Smith	5 Stemmet, Mars, Justin, Meagan, Sarolyn, Mars, Chief Smith	6 Stemmet, Mars, Justin, Meagan, Sarolyn, Mars, Chief Smith	7 Stemmet, Mars, Justin, Meagan, Sarolyn, Mars, Chief Smith	8 Stemmet, Mars, Justin, Meagan, Sarolyn, Mars, Chief Smith
9 Aplon, Turlo, Shaun, Verdia, Esric, Pat, Badenhorst,	10 Aplon, Turlo, Shaun, Verdia, Esric, Pat, Badenhorst,	11 Aplon, Turlo, Shaun, Verdia, Esric, Pat, Badenhorst,	12 Aplon, Turlo, Shaun, Verdia, Esric, Pat, Badenhorst	13 Aplon, Turlo, Shaun, Verdia, Esric, Pat, Badenhorst	14 Aplon, Turlo, Shaun, Verdia, Esric, Pat, Badenhorst	15 Aplon, Turlo, Shaun, Verdia, Esric, Pat, Badenhorst
16 Stemmet, Justin, Meagan, Lucia, Isaacs	17 Stemmet, Justin, Meagan, Lucia, Isaacs	18 Stemmet, Justin, Meagan, Lucia, Isaacs	19 Stemmet, Justin, Meagan, Lucia, Isaacs	20 Stemmet, Justin, Meagan, Lucia, Isaacs	21 Stemmet, Justin, Meagan, Lucia, Isaacs	22 Stemmet, Justin, Meagan, Lucia, Isaacs
23 Aplon, Turlo, Shaun, Verdia, Esric, Pat, Mars	24 Aplon, Turlo, Shaun, Verdia, Esric, Pat, Mars	25 Aplon, Turlo, Shaun, Verdia, Esric, Pat, Mars	26 Aplon, Turlo, Shaun, Verdia, Esric, Pat, Mars	27 Aplon, Turlo, Shaun, Verdia, Esric, Pat, Mars	28 Aplon, Turlo, Shaun, Verdia, Esric, Pat, Mars	29 Aplon, Turlo, Shaun, Verdia, Esric, Pat, Mars

16 Dec – Day of Reconciliation

25 Dec – Christmas Day

26 Dec – Boxing Day

## Events

# January

# 2025

Monday	Tuesday	Wednesday	Thursday	Friday	Saturday	Sunday
30 Stemmet, Justin, Meagan, Sarolyn, Badenhorst	31 Stemmet, Justin, Meagan, Sarolyn, Badenhorst	1 Stemmet, Justin, Meagan, Sarolyn, Badenhorst	2 Stemmet, Justin, Meagan, Sarolyn, Badenhorst	3 Stemmet, Justin, Meagan, Sarolyn, Badenhorst	4 Stemmet, Justin, Meagan, Sarolyn, Badenhorst	5 Stemmet, Justin, Meagan, Sarolyn, Badenhorst
6 Aplon, Turlo, Shaun, Verdia, Esric, Pat, Isaacs	7 Aplon, Turlo, Shaun, Verdia, Esric, Pat, Isaacs	8 Aplon, Turlo, Shaun, Verdia, Esric, Pat, Isaacs	9 Aplon, Turlo, Shaun, Verdia, Esric, Pat, Isaacs	10 Aplon, Turlo, Shaun, Verdia, Esric, Pat, Isaacs	11 Aplon, Turlo, Shaun, Verdia, Esric, Pat, Isaacs	12 Aplon, Turlo, Shaun, Verdia, Esric, Pat, Isaacs
13 Stemmet, Mars, Justin, Meagan, Lucia, Chief Smith	14 Stemmet, Mars, Justin, Meagan, Lucia, Chief Smith	15 Stemmet, Mars, Justin, Meagan, Lucia, Chief Smith	16 Stemmet, Mars, Justin, Meagan, Lucia, Chief Smith	17 Stemmet, Mars, Justin, Meagan, Lucia, Chief Smith	18 Stemmet, Mars, Justin, Meagan, Lucia, Chief Smith	19 Stemmet, Mars, Justin, Meagan, Lucia, Chief Smith
20 Aplon, Turlo, Shaun, Verdia, Esric, Pat, Badenhorst	21 Aplon, Turlo, Shaun, Verdia, Esric, Pat, Badenhorst	22 Aplon, Turlo, Shaun, Verdia, Esric, Pat, Badenhorst	23 Aplon, Turlo, Shaun, Verdia, Esric, Pat, Badenhorst	24 Aplon, Turlo, Shaun, Verdia, Esric, Pat, Badenhorst	25 Aplon, Turlo, Shaun, Verdia, Esric, Pat, Badenhorst	26 Aplon, Turlo, Shaun, Verdia, Esric, Pat, Badenhorst
27 Stemmet, Justin, Meagan, Sarolyn, Isaacs	28 Stemmet, Justin, Meagan, Sarolyn, Isaacs	29 Stemmet, Justin, Meagan, Sarolyn, Isaacs	30 Stemmet, Justin, Meagan, Sarolyn, Isaacs	31 Stemmet, Justin, Meagan, Sarolyn, Isaacs		

1 Jan – New Year

# Events

## 14. CALL OUT PROCEDURES

All Emergency Incidents must be reported to the Emergency Control Centre (Control) old Foxtrot 1.



Control will capture the information on CAD system.



Activate the on-duty crew and inform the on-duty station commander.



The on-duty station commander will request additional assistance and a IMT team if needed.

The Incident Commander (IC) must remain in contact with the on-duty station commander (if the on duty station commander is not on scene) The IC must remain in communication with Control Centre and post regular updates on the FDS WhatsApp group. The updates/sitreps must include the following:

**Exact location – grid reference or GPS**

**Type of incident (size and severity)**

**Hazards – present and potential**

**Access to scene**

**Injuries/ Damages (Number and severity of casualties or structures (estimated))**

**Emergency and other services present and required**



Duty officer must inform CFO, Director, MM etc.

The following calls out procedure for additional resources are:

Air or ground Support request (on emergency) from Chief Fire Officer/ Incident Commander to Director Directorate: Municipal Public Safety/ MM for approval or approval for overspending. On approval the chief Fire Officer /Incident Commander will contact district or provincial fire management to dispatch requested resources to location and manage these resources and keep Director/ MM informed.

All air and ground support after the necessary approval, resources can be requested via Bredasdorp dispatch.

Bredasdorp Dispatch	
Fire Line	082 312 9507/6040
Admin Line	028 425 1690/6040
E-Mail Address	<a href="mailto:bredispatch@odm.org.za">bredispatch@odm.org.za</a>

**15. FESTIVE SEASON MITIGATION STRATEGY**

- 24 hours a day firefighters will be ready to respond to any fire call
- Fresh crew will be available at least every 24-hours
- All available fire engines will be placed at strategic points during New Year’s Eve celebrations and mid and post season from 6 December 2024 until 12 January 2025.

**16. POSSIBLE FUNDING IMPLICATIONS & DEVIATION FROM NORMAL SUPPLY CHAIN PROCEDURE DURING EMERGENCIES**

- Additional shifts from 06 December 2024 until 12 January 2025 to man strategic points (16, 24, 25, 26, & 31 December 2024 and 01-02 January 2025)
- After hours/ weekend working for Fire resources ( Western Cape Province)
- Additional overtime and standby for Senior officer and Firefighter (extended incidents)
- Food rations (extended incidents or on request of Chief Fire Office /Incident Commander)
- Transport for Working for Fire Personnel
- Additional logistical support from Overstrand municipal departments and or other external resources
- Fire suppressing Support (Aerial)