

ELECTRICAL SERVICES HOW TO GUIDE



Electrical Department Contact Details:

Hermanus : 028 316 5600

Gansbaai-Stanford : 028 384 8358/76

Kleinmond : 028 271 8400



We belong



We care

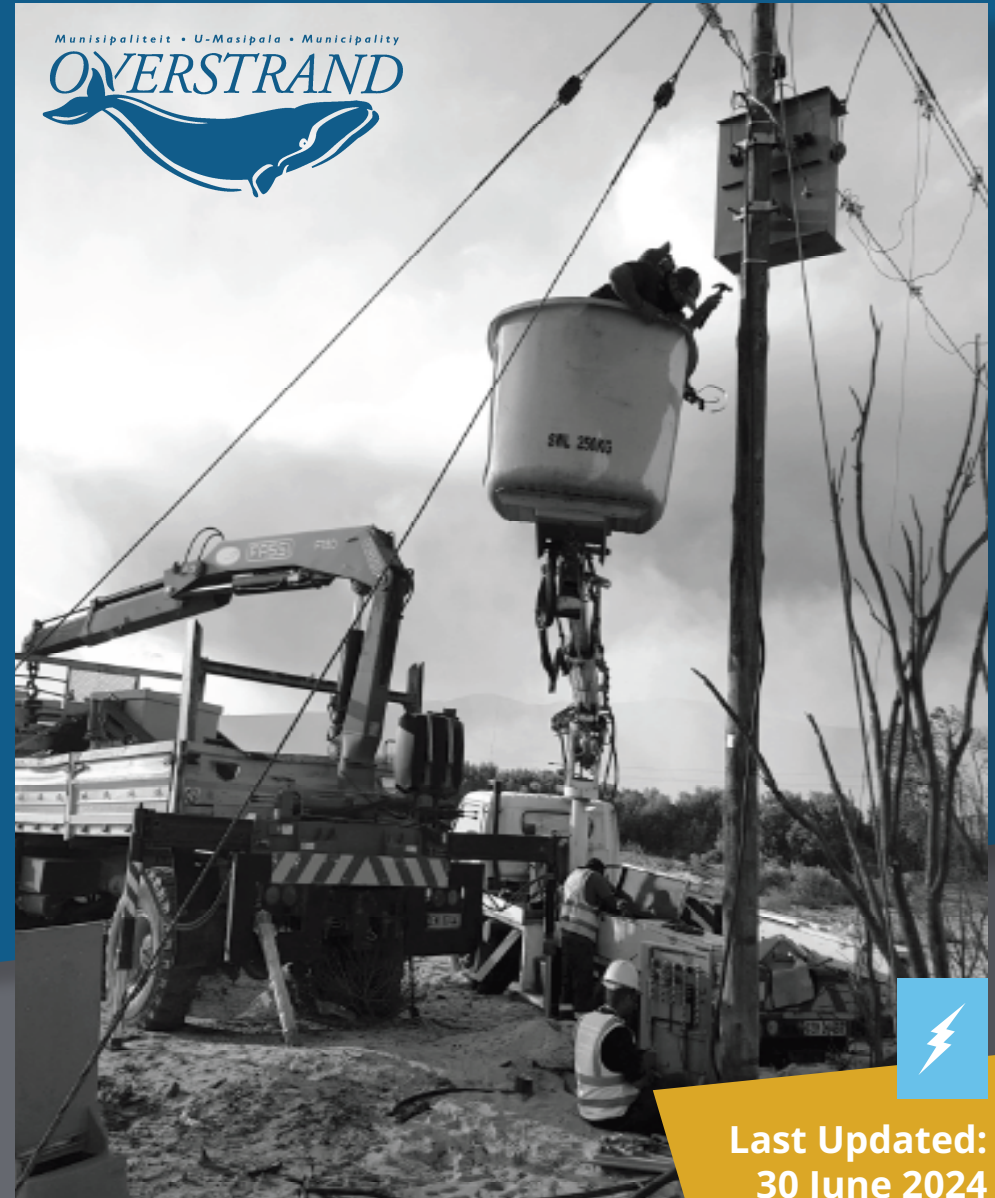


We serve

#overstrand4all

Munisipaliteit • U-Masipala • Municipality

OVERSTRAND



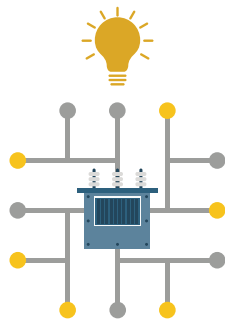
Last Updated:
30 June 2024

Electricity Tariffs explained 2

Electricity Terms and Definitions 7

Frequently Asked Questions 14

Electricity Tariffs 18



1. INTRODUCTION TO ELECTRICITY

Overstrand Municipality is committed to quality service delivery to the residents of Overstrand and to the expansion of services to those who never previously had access to these. A sustainable supply of sufficient electricity and energy is vital for the growth and development of Overstrand.

Electricity Reticulation is a Local Government Competence in terms of the Constitution and the Municipality is licensed to sell electricity to customers in its designated area of supply.

In this regard, the Municipality has the following responsibilities:

- Preparing a sustainable business for the future through the promotion of alternative energy sources.
- Planning, designing and operating its network
- Proper metering and recording of customers
- Maintaining an acceptable standard of electricity supply to all customers.

The Municipality is tasked with the provision of a safe and reliable electricity supply to all customers in accordance with its legislated mandate and the relevant national standards and, as such, there is no high or low standard of supply.

Overstrand Municipality is responsible for electricity distribution and reticulation in the Greater Hermanus, Hawston, Greater Gansbaai, Kleinmond and Stanford areas. All other areas are supplied by Eskom.

2. ELECTRICITY TARIFFS TERMS AND CONDITIONS

2.1 General

Tariffs and conditions set out herein will apply to all consumers within the municipal supply area of Overstrand Municipality. These terms and conditions must be read in conjunction with the Customer care, credit control and debt collection policy as well as the Tariff policy.

- Inclining block tariffs will be phased out to flat rate energy charges to ensure efficient and fair cost recovery.
- A cancellation fee will be payable for the cancellation of any requested services.
- Conversion fees are payable when a customer requires a change in the technical characteristics of the supply and/or the tariff.

2.2 Basic monthly charge (EB)

The basic monthly charge covers our fixed operational costs and capital infrastructure expenditure. This includes, but is not limited to, upgrading, maintenance on the entire municipal electrical network, from main supply point up to the consumer connection point, as well as the repair/replacement of faulty metering equipment within the electrical distribution area of Overstrand Municipality.

2.3 Capacity Charge (EC)

A rand per amp, per phase, per meter charge that is levied monthly based on the capacity reserved by the municipality for each individual customer connection. This charge will be payable by the property owner irrespective of the total energy used.

2.4 Consumer Deposits (ED)

In order to provide the Municipality with appropriate security for payment of amounts owing to it from time to time for services rendered, the Council shall impose a system of deposits payable by consumers. The deposits shall be set with due regard to the potential financial risk associated with the amounts owing from time to time as well as sufficient provision for working capital. The level of the deposits shall be revised annually and the Municipality may introduce transitional arrangements in respect of existing consumers.

2.5 Fixed Infrastructure Charge (EF)

The fixed Infrastructure charge is a non-escalating monthly fee which covers the capital contribution due for a specific capital infrastructure expenditure. A fixed cost charged for a specific loan undertaken for the upgrading of Bulk electrical infrastructure. It is not affected by the annual tariff increase.

2.6 Upgrade or Downgrade

All upgrades will be network permitted and subject to the relevant approval from the Electrical Department.

- All customers who currently have a 60Amp connection will be given the opportunity to change their connection size once, free of charge in the 2024/25 financial year. *They may choose to change their connection size to one of the following:*

- 30 Amp
- 40 Amp
- 50 Amp
- 60 Amp



- All other non-standard connection sizes will be dealt with as and when needed by the electrical department.
- Customers will be allowed to upgrade/downgrade without changing their main circuit breaker or providing a COC. Should the municipality however be called out for overloading of the meter more than once, a call out fee will be charged. The customer will then be required to change their main circuit breaker and provide a COC or alternatively change to a more suitable connection size.
- All customers who wish to downgrade from 60 Amp to 30-, 40- or 50 Amp, will be required to change to prepaid. Prepaid meters will be set to the relevant sizes.
- Customers may upgrade as many times as they require at the annual approved rate but may only downgrade once in a financial year.
- Changing between different connection sizes will be network permitted and these tariffs will not apply to customers within low cost housing areas or SSEG connections.

2.7 Network Charges: Serviced Land

- A Network charge will be levied on all erven or units not connected to the electricity network but can reasonably be connected to the service. The network charge covers our fixed operational costs and capital infrastructure expenditure. This includes, but is not limited to, upgrading, maintenance on the entire municipal electrical network, from main supply point up to the consumer connection point, as well as the repair/replacement of faulty metering equipment and is payable by all erven within the electrical distribution area of Overstrand Municipality.
- The Network Charge for Serviced land will be calculated on a standard 60Amp connection size and be applicable to all vacant erven.

2.8 New Connections

- All IRDP and UISP housing will be provided with a 30Amp single phase supply.
- All new connections will be pre-payment meters
- The standard supply connection will be 60Amp Single Phase

2.9 Indigent and Lifeline customers

- All indigent and Lifeline customers will be limited to a 30Amp supply.
- As per the Overstrand Indigent Policy, domestic consumers who applied and were approved, will receive an x-amount of electricity free of charge with their first electricity purchase each month.
- Indigent customers who wish to upgrade their connection to more than 30 Amp will forfeit their indigent grant.



2.10 Small Scale Embedded Generation

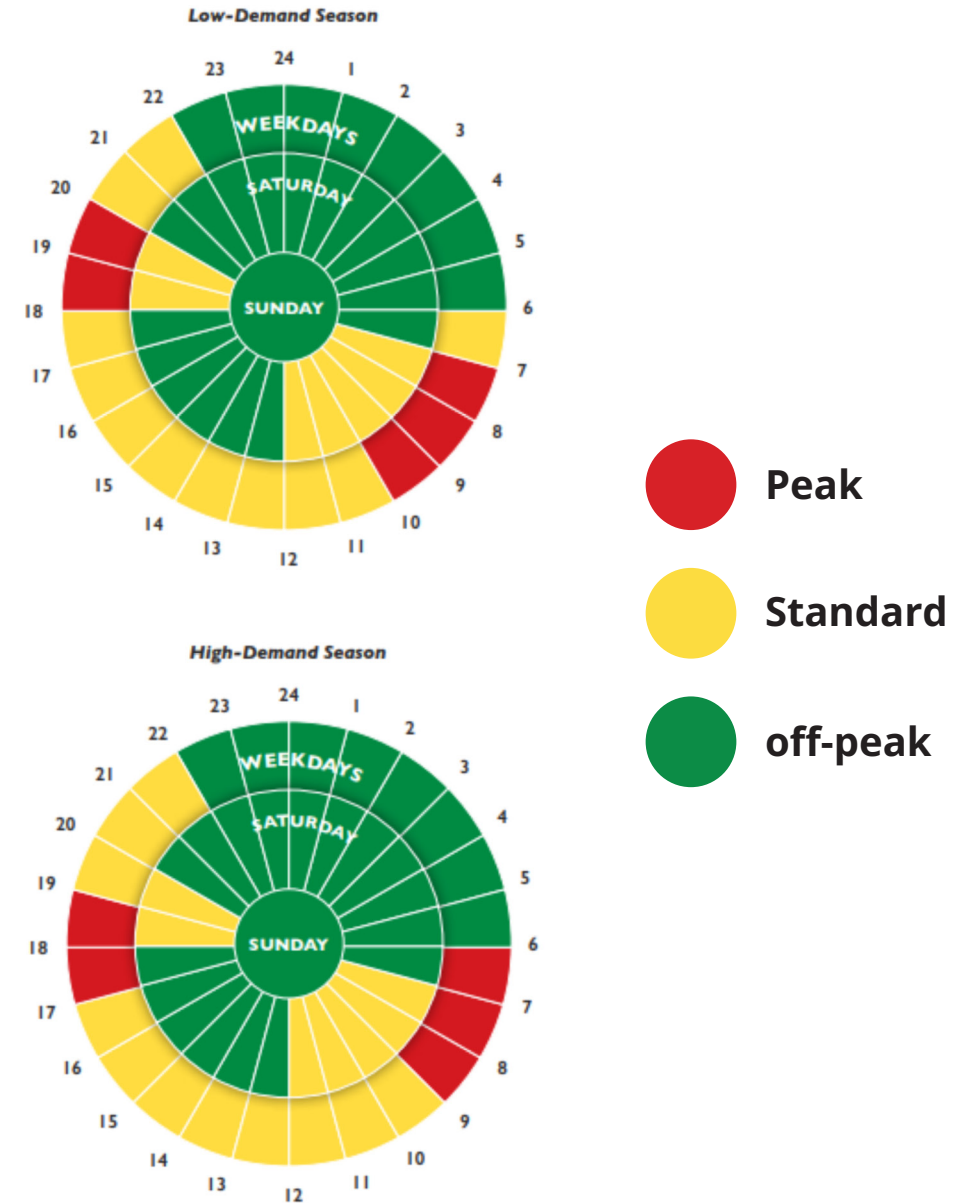
- Due to the approval of SSEG being capacity dependent, applications for decreased capacity will only be approved by the Senior Manager: Electrical Services.
- Net billing will be allowed under the following conditions:
- The client needs to comply to all connection specifications as set out in the NRS097 and standard application procedures for a SSEG connection
- The client will be credited on a month-to-month basis.
- The client will only be credited up to the total amount of their energy account, which does not include any fixed monthly charges.
- At the end of each financial year, the account will be balanced to ensure that the credit provided during the financial year does not exceed the total energy account billed.
- No credit may be used for any other municipal services.
- All SSEG registrations and applications can be done on our online portal apply.sseg.org.za

2.11 Uilenkraalsmond Resort

- Capacity charges will be calculated at 30Amp
- Tariffs will be implemented through one of the following methods:
- Standard process where customer opens an account and is billed monthly. Clients will be required to sign a debit order.
- Fixed charges billed as a daily charge on the prepaid vending system.
- Resort meters which are currently on 60 Amp will need to register for a monthly account.

2.12 Time of Use customers

- High season tariffs will be applicable from June – August annually
- Low Season tariffs will be applicable from September – May annually
- The peak kVA registered per billing month will be charged irrespective if it is in Peak/Standard/Off-peak time periods.
- Peak, Standard and Off-Peak time slots will be as per the time schedules published by Eskom annually.
- Each Time-of Use consumer must nominate the Maximum demand which they intend to draw from the Overstrand municipal electricity network. This nominated figure is known as the Notified Maximum Demand (NMD) and is measured in kVA.
- Upon exceeding this NMD for the first time in any 12 consecutive month period, the consumer will receive a warning. Should the consumer exceed the NMD again within a 12-month period, the consumer will be required to pay the charge per kVA as per the annual approved tariffs. Each subsequent exceeding of the NMD will be charged similarly. When the NMD has not been exceeded in any 12 consecutive months, consumer will then only receive a warning, whereafter the process will continue as described.
- Consumers may increase their NMD as many times as is needed within one financial year but may only decrease their NMD once within a financial year. All increases will be charged according to the approved annual tariffs and are subject to network investigations and available capacity.
- Reactive energy charges will only be applicable in high season periods.





ELECTRICITY TERMS & DEFINITIONS

1.2.1 Other Definitions and conditions

Ampere	The unit in which electric current is measured being the rate of flow of electric current through a conductor and which is comparable to the rate of volume of water flow through a pipe.
Anti-Islanding	The ability of an SSEG installation to instantly and automatically disconnect the generator from the local utility grid whenever there is a power outage in the utility grid, thus preventing the export of electricity to the utility grid from the SSEG. This is done primarily to protect utility workers who may be working on the utility grid and who may be unaware that the grid is still being energized by the SSEG.
Arrears	means any amount which is due, owing and payable and which remains unpaid by the due date.
Authorised Representative	person who has been granted, in writing, defined authority and responsibilities by the designated person in terms of the relevant operating regulations.
Backyard dwelling	means an informal structure erected for residential purposes on premises in addition to an existing dwelling unit.
Basic municipal service	the amount or level of any municipal service that is necessary to ensure an acceptable and reasonable quality of life and which, if not provided, would endanger public health or safety of the environment and for the purposes of this Policy are restricted to the delivery of electricity, refuse, sewerage and water services.
Bi-directional meter	A four quadrant meter that separately measures electricity flow in both directions (import and export).
Billing	process of producing and delivering a bill (an account) for payment by a customer, calculated from the tariff schedule, and for the majority of customers, the consumption measured and recorded by the metering system.
Billing month	time period over which the energy registers are accumulated before they are used to generate a bill. The billing month does not necessarily correspond to a calendar month.
Billing period	time between consecutive billing dates, nominally in months (e.g. one, three or six months) but in practice defined as a number of days (e.g. 28 days, 60 days, 91 days, etc.)
Builders connection	means an electricity supply required by a consumer for a period and in terms of conditions negotiated within a temporary supply agreement, normally less than one year;

Call-out fee	Where the municipality is called out to attend to a supply interruption or electrical meter issue and the fault is found to be on the customer's side of the installation and not on the municipality's side, a call out fee is payable.
Capital contributions	once off contributions made by customers/developers towards the capital costs of networks installed by the utility to meet the customer/developers electricity needs/ cash contributions made by the customer towards the capital costs of the network installed by the utility on behalf of the customer.
Certificate of Compliance (COC)	means a certificate issued in terms of the Regulations (SANS 10142) in respect of an electrical installation or part of an electrical installation by an accredited person.
Charges	This refers to different charges that a customer has to pay such as a charge for energy or charge for installed capacity.
Commercial customer	Means any other customer other than domestic and indigent customers, including, but not limited to, business, industrial, government and institutional customers.
Commercial unit/ erf	Means a self-contained or lettable section within a building or a group of buildings on the same plot excluding short term residential accommodation establishments for e.g. hotels, bed & breakfast, guest houses, etc. An owner of a commercial property may annually choose between being levied either per erf or per commercial unit for water and sewage basic charges. This choice must be applied on or before 30 September of each financial year.
Connection agreement	means an agreement detailing the conditions under which the distributor or transmitter intends to connect the customer or any other connection such as an embedded generator.
Connection fee	A charge recouped from the customer for the cost of providing new or additional capacity (irrespective of whether new investment is required or not). This is recovered in addition to the tariff charges as an up-front payment (connection fee).
Consumer	in relation to premises means: (a) any occupier thereof or any other person with whom the Municipality has contracted to supply or generate, or is actually supplying or generating electricity thereat; or (b) if such premises are not occupied, any person who has a valid existing agreement with the Municipality for the supply or generation of
Consumption	energy used by a customer during a specified period, measured in kWh.
Conversion fee	minimum up front contribution payable when there are tariff changes, meter changes, changes in installation or when a supply point is shifted.
Cost of service	cost of services includes all direct costs incurred by the utility to supply electricity plus indirect costs such as profits, taxes, subsidies and abnormal costs.
Cost reflective	the pricing method to reflect the full economic cost of supplying electricity to a consumer.

Council	Means a municipal council referred to in section 18 of the Local Government: Municipal Structures Act, 1998 (Act No 117 of 1998) and for purposes of this policy, the municipal council of the Overstrand Municipality.
Credit meter	means a meter where an account is issued subsequent to the consumption of electricity.
Cross-subsidy	Over- recovery of revenue from customers in some tariff classes whether intentional (eg electricity levies) to balance under-recovery of revenue from customers in other tariff classes (ie electricity subsidies) as calculated in the cost of supply study or unintentional by way of unidentified surcharges within the ESI or as a natural consequence of cost pooling or within the ESI to recover legacy costs.
Customer	Any occupier of any property to which the Municipality has agreed to supply services or already supplies services to, or if there is no occupier, then the owner of the property (including registered indigent household).
Customer categories	single load profiles that best describe the customer type, for example, business, industrial, residential, electrification, night time users, agricultural, etc.
Damage of HV Cable	Fine payable for the damage of any HV feeders (overhead or underground). Actual cost of repair must be added to this amount.
Damage of LV Cable	Fine payable for the damage of any LV feeders (overhead or underground). Actual cost of repair must be added to this amount.
Damage of meter	Where equipment is damaged by a customer. The fee payable is the actual cost of the equipment to be replaced plus the call out fee.
Damage of MV Cable	Fine payable for the damage of any MV feeders (overhead or underground). Actual cost of repair must be added to this amount.
Damage of Service Connection	Fine payable for the damage of any service connections (overhead or underground). Actual cost of repair must be added to this amount.
Dedicated network	customer dedicated assets are assets created for the sole use of a customer to meet the customer's technical specifications, and are unlikely to be shares in the distributor's planning horizon by any other end-use customer.
Defaulters	A person who owes money to in respect of a municipal account after the due date for payment has expired.
Distribution network/system	electrical infrastructure of the distributor over which electrical energy is transported from source to point of delivery to customers. This includes all assets including substations with their buildings and ground, lines and cable servitudes, control equipment, meters and service connections.
Economic Development Projects	the provision of direct or indirect assistance to an applicant/ qualifying entity by a local or regional government to assist in the cultivation of activities that create a net gain of money into the community.

Effective date	means the date on which the responsibility for the delivery of the electricity service is transferred to the Municipality.
Electricity meter	device which measures and registers the integral of an electrical quantity with respect to time.
Embedded Generator	means a legal entity that operates one or more unit(s) that is connected to the distribution system. Alternatively, a legal entity that desires to connect one or more unit(s) to the distribution system.
Energy charges	charges based on the amount of energy consumed.
Generating Capacity	The maximum amount of electricity, measured in kilovolt Amperes (kVA), which can flow out of the generation equipment into the consumer's alternating current wiring system. This is therefore the maximum alternating current power flow which can be generated.
Grid-tied	An SSEG that is connected to the utility electricity grid either directly or through a consumer's internal wiring is said to be "grid-tied". The export of energy onto the utility grid is possible when generation exceeds consumption at any point in time. Such consumers would rely on the utility grid to supply them with electricity when their instantaneous generation is insufficient to supply their instantaneous consumption.
Household	all persons who are jointly living on a stand or site on a permanent basis and who receive electricity and/or water from one meter, regardless whether the person rents or owns the property.
Indigent	A household who is not financially capable of paying for the delivery of basic services and meeting criteria determined by Council from time to time - this also includes poor households.
Informal dwellings	Any form of housing, shelter or settlement where the ownership, use and purpose of land cannot be fixed and mapped according to any prescribed set of regulations or the law and where such occupants have shared access to communal basic municipal services.
Investigation Fee	Payable by all customers who wish to increase their capacity above the standard connection sizes available. An investigation will be done for said upgrade to determine if sufficient capacity is available and existing infrastructure can accommodate the additional load.
Life Line	Available to pre-paid consumers whose connection is ≤ 30 Amp with a maximum average consumption of 350 kwh measured over a period of 12 months. This tariff is only available to informal dwellings in informal settlements.
Low Voltage (LV)	Means the set of nominal voltage levels that are used for the distribution of electricity and whose upper limit is generally accepted to be an a.c. voltage of 1000V (or a d.c. voltage of 1500V) [SANS 1019]

Medium Voltage (MV)	Means a set of nominal voltage levels that lie above low voltage and below high voltage in the range of $1kV < U_n \leq 44kV$ [SANS 1019]
Municipality	means Overstrand Municipality, a Municipality established in terms of Section 12 of the Municipal Structures Act, 117 of 1998 or any legal entity duly authorized by the Overstrand Municipality to provide an electricity service within the jurisdiction of Overstrand Municipality.
MV Switching on Council equipment	Switching done on Municipal infrastructure to allow customers to do maintenance/repairs on their internal networks.
Network	electrical infrastructure needed to transport electrical energy from a source of generation to a point of consumption.
Network capacity	maximum technical limit of load that can be delivered by a particular network before equipment life would be abnormally reduced.
Network Capacity Charge kVA: Notified Maximum Demand (NMD)	Notified Maximum Demand – the maximum capacity in kVA, as measured over a 30 minute- integration period, per point of supply that the customer will contract for Overstrand to make available during all time periods.
Network Charges	charges designed to recover costs (including capital, operations, maintenance and refurbishment) for the provision of network capacity required by and reserved for the customer.
Network Demand Charge kVA: Utilised Capacity	Means the higher of the notified maximum demand (NMD) or peak load, in kVA, as registered per point of supply over any 30 minute-integrated period within a particular billing month.
Non-standard	All connections outside the standard connection sizes made available by the Municipality.
Prepaid meter	electricity meter that can be operated and controlled to allow the flow of a pre-purchased amount of energy in an electrical circuit.
Reactive Energy Charge	a charge levied on every kvarh which is registered in excess of 30% of the kWh supplied during a particular billing month.
Removal of meter	Removal of meter and connection on request of customer.
Replace CIU	Payable by all customers who have lost or damaged their customer interface unit.
Replacement of damaged overhead service connection cable	Payable by all customers where the overhead service connection has been damaged whether it was due to theft, vandalism or own operation.

Repositioning of meter	Repositioning of existing fixed meters within the customer's premises/structure.
Reseller	Entities that are registered to purchase electricity from licensed distributors and resell it to their end-user customers.
Residential	Means improved property that is: (a) a general predominantly (60% or more) for residential purposes, with not more than two dwelling units per property. (b) a unit registered in terms of the Sectional Title Act 95 of 1986, used predominantly (60% or more) for residential purposes, and includes any unit in the same Sectional Title Scheme registered in the name of the same owner which is used together with the residential unit as if it were one property, for example a garage or store room. (Any such grouping shall be regarded as one residential property for rate rebate or valuation purposes.) or (c) owned by a share-block company and used predominantly (60% or more) for residential purposes, or (d) a residence used for residential purposes situated on property used for or related to educational purposes.
Residential unit	Means a single residential erf, flat, townhouse or group development unit, retirement village unit, guest house, bed and breakfast and any household related consumer that do not fall in one of the above household consumer categories;
Service Connections	Means all cables and equipment required to connect the supply mains to the installation of the consumer at the point of supply.
Shared network	A section of the utility grid that supplies more than one consumer.
Small Scale Embedded Generator (SSEG)	A small-scale embedded generator for the purposes of these guidelines is an embedded generator with a generation capacity of less than 1000 kVA (1MVA).
Special meter reading	where a customer requests a special meter reading outside the normal meter reading date for whatsoever reason, the special meter reading fee is payable.
Sundry Charges	All charges other than fixed costs and energy charges pertaining to the delivery of electricity services by the municipality.
Tamper	unauthorized interference with the supplier's equipment, or removal of the supplier's seal from a protective device or from metering equipment, or the illegal connection to the utilities' infrastructure.
Temporary disconnection	The disconnection of services to allow the customer's private contractors to do repair/maintenance work on the customer's installation and the reconnection of said services once the relevant work has been completed.
Temporary supply	means an electricity supply required by a consumer for a period and in terms of conditions negotiated within a temporary supply agreement, normally less than one year;

Test of Meter – internal	Payable for all on-site tests which results deem the meter accurate.
Test of Meter – external	Payable if a customer requests a meter to be tested at an accredited laboratory. If the meter is found to be faulty, the fee charged will be refunded to the customer.
Time of Use	Means a tariff with energy charges based on the volume of electricity demand during high, mid and low demand periods and may differ per tariff.
Vacant land	Means all developed land irrespective of its current or future intended zoning. Agricultural properties will not be considered as being vacant even.
Wayleave deposit	Deposit payable by all contractors who are to conduct works within the vicinity of municipal electrical infrastructure. All costs pertaining to the damaging of any infrastructure will be deducted from the deposit and any remaining funds will be refunded to the contractor upon the finalization of the project.
Working without wayleave	Fine payable by anyone conducting any works within the vicinity of existing electrical infrastructure without obtaining the relevant way leave approvals from the municipality.



FREQUENTLY ASKED QUESTIONS



1. WHERE DOES MY ELECTRICITY COME FROM?

Overstrand Municipality is supplied by the national grid and distributes electricity to consumers within our distribution area. All other areas are supplied directly by Eskom.

2. WHAT METERING OPTIONS ARE AVAILABLE?

The Municipality has standardized on the installation of Pre-Payment meters for all Domestic consumers. As such it is compulsory for all new domestic connections to be equipped with a Pre-Payment Meter. Overstrand however has the following existing installation types:

- Credit meter systems – Consumers receive a continuous electricity supply and are billed monthly based on the amount they have used or are estimated to have used.
- Prepaid meter systems – Consumers are required to purchase electricity upfront, similar to pay-as you-go cellphones.

3. MAY I PROVIDE ELECTRICITY TO MY NEIGHBOUR?

No. Electricity may only be used on the premises for which the meter is registered. Electricity received from the municipality, or generated by yourself, may not be distributed beyond the boundaries of your property.

4. WHAT IS TAMPERING?

Tampering is the unlawful interference, vandalism or destruction of any electricity infrastructure or equipment of the Overstrand Municipality and includes:

- Breaking off or damaging the seals of any electrical installation
- Illegally connecting to any electrical installation or infrastructure on the Overstrand electrical network.
- Tampering, interfering vandalizing, fixing advertising medium to or defacing any metering equipment, service connection, service protective device, supply mains or any other equipment of the Overstrand Municipality.

Should any authorized official of Overstrand Municipality find that you have tampered in any way, your electricity connection will be terminated and you will be issued with a tampering fee as per the approved annual tariffs.

5. MAY I PROVIDE ELECTRICITY TO MY NEIGHBOUR?

No. Electricity may only be used on the premises for which the meter is registered. Electricity received from the municipality, or generated by yourself, may not be distributed beyond the boundaries of your property.

6. WHAT IS TAMPERING?

Tampering is the unlawful interference, vandalism or destruction of any electricity infrastructure or equipment of the Overstrand Municipality and includes:

- Breaking off or damaging the seals of any electrical installation
- Illegally connecting to any electrical installation or infrastructure on the Overstrand electrical network.
- Tampering, interfering vandalizing, fixing advertising medium to or defacing any metering equipment, service connection, service protective device, supply mains or any other equipment of the Overstrand Municipality.

Should any authorized official of Overstrand Municipality find that you have tampered in any way, your electricity connection will be terminated and you will be issued with a tampering fee as per the approved annual tariffs.

7. HOW DO I REPORT AN ELECTRICAL FAULT?



Before contacting Overstrand Municipality with regards to an electrical fault, please make sure of the following:

- If you have a credit meter – that your account is not in arrears
- If you have a prepaid meter – that you still have credit on your meter.
- If your prepaid meter does not want to switch on, that you replace the battery in the keypad.
- That nothing has tripped on your distribution board. Please switch off all switches and start by switching on your main circuit breaker and then each switch thereafter individually. Should one of the switches trip on the distribution board, please contact a private electrician.
- That there is no loadshedding scheduled for your area
- *If you have tried all of the above and still have a problem, you can contact us on one of the following nrs:*

Office hours (Mon – Fri : 07:45 – 13:00 & 13:45 -16:30)

Hermanus: 028 316 5600 (Elect Dept) or 028 313 8000 (Switchboard)

Kleinmond: 028 271 8400

Gansbaai & Stanford: 028 384 8376 (Elect Dept) or 028 384 8300 (Switchboard)

After hours (Including Weekends and public holidays)

All areas: 028 313 8111

8. REPORTING FAULTY STREETLIGHTS

You can make use of the above contact details or Collab Citizen App to report any faulty streetlights in your area.

Please note that we will respond to streetlight faults within the following time frames:

- 95% of complaints resolved within ten (10) working days
- 100% of complaints resolved within fifteen (15) working days

9. WHAT IF I HAVE A PROBLEM WITH MY ELECTRICITY ACCOUNT?

Any queries with regards to your electricity or municipal account can be directed at enquiries@overstrand.gov.za Always include your municipal account number for reference.

10. WHO CAN GET FREE BASIC ELECTRICITY?

Free basic electricity (FBE) is targeted at low-income households and is therefore made available to our indigent clients who meet certain criteria, including being a small power user. FBE is not intended as a reward for saving electricity, but as a subsidy for low-income households. For more information with regards to the application procedure for indigent grants, please contact our collections department on 028 313 8000 or send an email to enquiries@overstrand.gov.za.

11. WHY DO I PAY A BASIC MONTHLY CHARGE?

The basic monthly charge is to cover the costs of keeping you connected to the network, irrespective of how much electricity you use. The basic charge goes towards maintaining your service connection, paying back the capital invested, covering salaries and wages, as well as any other costs not directly related to the amount of electricity used. All even in the Overstrand electricity distribution area pay a basic monthly charge for electricity, so that costs are distributed fairly between all consumers.

12. DOES THE MUNICIPALITY IMPLEMENT LOADSHEDDING?

No. All loadshedding is implemented and managed by Eskom. Overstrand Municipality does not receive advance notice of any loadshedding or changes in schedules.



13. HOW DO I KNOW WHICH CONNECTION SIZE TO CHOOSE?

Choosing between 30, 40, 50 or 60 Amp may sound like a daunting task. The connection size does not limit you on how many units you can use, but rather on how many appliances you can switch on simultaneously. An easy way to check what your instantaneous capacity is, is to switch on all the appliances which you would normally use and then enter one of the following codes on your prepaid meter:

Meter make	Meter nr	Code
Conlog	starting with 04	#050#
Landis & Gyr	starting with 07	i050
Itron	starting with 01 or 84	050 and press enter

The meter will show you the instantaneous power. You can verify this usage with the limits below:

30Amp – 6900W ; 40Amp – 9200W ; 50Amp – 11500W ; 60Amp – 13800W



OVERSTRAND MUNICIPALITY TARIFF LIST 2024/2025 AFTER NERSA APPROVAL

ELECTRICITY TARIFFS (ROUNDING APPLICABLE) (AFTER NERSA approval)

1

Tariff Code	Detail		2024/2025		2023/2024		
			Exclude VAT	Include VAT 15%	Exclude VAT	Include VAT 15%	
ED	CONSUMER DEPOSITS						
ED1	Large Power User Group tariff E5 (excluding Kleinmond)	R	0,00	no vat	0,00	no vat	
ED2	Large Power User Group tariff E5 Kleinmond 2 weeks highest average consumption	R	calculated	no vat	calculated	no vat	
ED3	Domestic & Commercial Single Phase Credit Meter (Two Part Tariff) Electricity	R	3 628,38	no vat	3 423,00	no vat	6,00%
ED4	Domestic Three Phase Credit Meter (Two Part Tariff)- Electricity	R	6 360,00	no vat	6 000,00	no vat	6,00%
ED5	Commercial Three Phase Credit Meter (Two Part Tariff) - Electricity	R	14 535,78	no vat	13 713,00	no vat	6,00%
ED6	Domestic & Commercial Single Phase Pre-paid (Two Part Tariff) - Electricity	R	836,34	no vat	789,00	no vat	6,00%
ED7	Domestic & Commercial Three Phase Pre-paid (Two Part Tariff) - Electricity	R	1 670,56	no vat	1 576,00	no vat	6,00%
ED8	Indigent Registered (including UISP)	R	269,24	no vat	254,00	no vat	6,00%
EDD	Deposit Defaulters						
EDD1	Large Power User Group tariff E5 : Two Times average consumption during the preceding 12 months	R	calculated	no vat	calculated	no vat	
EDD2	Domestic & Commercial Single Phase Credit Meter (Two Part Tariff) Electricity : Two Times average consumption during the preceding 12 months	R	calculated	no vat	calculated	no vat	
EDD3	Domestic Three Phase Credit Meter (Two Part Tariff)- Electricity : Two Times average consumption during the preceding 12 months	R	calculated	no vat	calculated	no vat	
EDD4	Commercial Three Phase Credit Meter (Two Part Tariff) - Electricity : Two Times average consumption during the preceding 12 months	R	calculated	no vat	calculated	no vat	
EF	FIXED CHARGES						
EF1	Infrastructure Charge per Meter per month (No 1 end date 30 June 2026)	R	16,65	19,15	16,65	19,15	0,00%
E1	SINGLE PHASE : DOMESTIC						
E1A	Two-Part Tariff: Credit meters 60 Amp (13.8 kVA BDMD) (Including Resorts)						
EB1A	Basic Monthly charge per meter per month	R	466,10	536,02	504,90	580,64	-7,68%
EC	Capacity Charge per Amp/Phase/Month	R	2,49	2,86	new	new	
EC1D	Capacity Charge : 60Amp	R	149,40	171,81	new	new	
	kWh Unit cost						
E1A2	IBT BLOCK 1 0 - 350 kWh	c	212,53	244,41	193,72	222,78	9,71%
E1A3	IBT BLOCK 2 351 - 600 kWh	c	273,93	315,02	284,52	327,20	-3,72%
E1A4	IBT BLOCK 3 > 600 kWh	c	384,67	442,37	349,57	402,01	10,04%
E1B	Two-Part Tariff: Pre-paid up to 60 Amp (13.8 kVA BDMD) (Including Resorts)						
EB1B	Basic Monthly charge per meter per month	R	466,10	536,02	504,90	580,64	-7,68%
EC	Capacity Charge per Amp/Phase/Month	R	2,49	2,86	new	new	
EC1A	Capacity Charge : 30Amp	R	74,70	85,91	new	new	
EC1B	Capacity Charge : 40Amp	R	99,60	114,54	new	new	
EC1C	Capacity Charge : 50Amp	R	124,50	143,18	new	new	
EC1D	Capacity Charge : 60Amp	R	149,40	171,81	new	new	
	kWh Unit cost						
E1B2	IBT BLOCK 1 0 - 350 kWh	c	200,33	230,38	178,95	205,79	11,95%
E1B3	IBT BLOCK 2 351 - 600 kWh	c	273,93	315,02	268,11	308,33	2,17%
E1B4	IBT BLOCK 3 > 600 kWh	c	369,76	425,22	336,02	386,42	10,04%
E1C	SINGLE PHASE : COMMERCIAL						
EB1C	Basic Monthly charge per meter per month	R	466,10	536,02	504,90	580,64	-7,68%
EC	Capacity Charge per Amp/Phase/Month	R	3,82	4,39	new	new	
EC2A	Capacity Charge : 30Amp	R	114,60	131,79	new	new	
EC2B	Capacity Charge : 40Amp	R	152,80	175,72	new	new	
EC2C	Capacity Charge : 50Amp	R	191,00	219,65	new	new	
EC2D	Capacity Charge : 60Amp	R	229,20	263,58	new	new	



OVERSTRAND MUNICIPALITY TARIFF LIST 2024/2025 AFTER NERSA APPROVAL

2

Tariff Code	Detail		2024/2025		2023/2024		
			Exclude VAT	Include VAT 15%	Exclude VAT	Include VAT 15%	
	kWH Unit cost						
E1C2	kWH Unit cost - Credit Meters	c	291,29	334,98	289,94	333,43	0,47%
E1C3	kWH Unit cost - Pre-paid meters	c	291,29	334,98	273,22	314,20	6,61%
E1D	Life Line Two part tariff (Pre-paid meters only) ≤ 30 Amp with Maximum consumption of 350 kWH with average measured over twelve month period. Only available to Informal dwellings						
E1D1	Supply Basic Monthly charge per meter per month	R	49,41	56,82	new	new	
EC	Supply Capacity Charge per Amp/Phase/Month	R	2,49	2,86	new	new	
EC1D	Supply Capacity Charge : 30Amp	R	74,70	85,91	new	new	
	kWH Unit cost						
E1B2	IBT BLOCK 1 0 - 350 kWh	c	199,05	228,91	180,89	208,02	10,04%
E1B3	IBT BLOCK 2 351 - 600 kWh	c	273,93	315,02	new	new	
E1B4	IBT BLOCK 3 > 600 kWh	c	329,97	379,47	new	new	
E1E	Two part tariff (Pre-paid meters only) Local Economic Development Projects						
E1E1	Basic Monthly charge per meter per month	R	49,41	56,82	new	new	
EC	Capacity Charge per Amp/Phase/Month	R	3,82	4,39	new	new	
EC2A	Capacity Charge : 30Amp	R	114,60	131,79	new	new	
EC2B	Capacity Charge : 40Amp	R	152,80	175,72	new	new	
EC2C	Capacity Charge : 50Amp	R	191,00	219,65	new	new	
EC2D	Capacity Charge : 60Amp	R	229,20	263,58	new	new	
	kWH Unit cost						
E1E1	IBT BLOCK 1 0 - 350 kWh Unit cost	c	309,96	356,45	312,54	359,42	-0,83%
E3	THREE PHASE: COMMERCIAL & DOMESTIC						
E3E	Two-Part Tariff: Credit up to 100A (70 kVA BDMD) DOMESTIC						
EB2A	Basic Monthly charge per meter per month	R	893,30	1 027,30	1 009,78	1 161,25	-11,54%
EC	Capacity Charge per Amp/Phase/Month	R	2,49	2,86	new	new	
EC3A	Capacity Charge : 40Amp	R	298,80	343,62	new	new	
EC3B	Capacity Charge : 60Amp	R	448,20	515,43	new	new	
EC3C	Capacity Charge : 80Amp	R	597,60	687,24	new	new	
EC3D	Capacity Charge : 100Amp	R	747,00	859,05	new	new	
	kWH Unit cost						
E3E2	IBT BLOCK 1 0 - 350 kWh	c	201,74	232,00	195,55	224,88	3,17%
E3E3	IBT BLOCK 2 351 - 600 kWh	c	274,84	316,07	285,69	328,54	-3,80%
E3E4	IBT BLOCK 3 > 600 kWh	c	382,29	439,63	347,41	399,52	10,04%
E3E	Two-Part Tariff: Pre-paid up to 100A (70 kVA BDMD) DOMESTIC						
EB2B	Basic Monthly charge per meter per month	R	893,30	1 027,30	1 009,78	1 161,25	-11,54%
EC	Capacity Charge per Amp/Phase/Month	R	2,49	2,86	new	new	
EC3A	Capacity Charge : 40Amp	R	298,80	343,62	new	new	
EC3B	Capacity Charge : 60Amp	R	448,20	515,43	new	new	
EC3C	Capacity Charge : 80Amp	R	597,60	687,24	new	new	
EC3D	Capacity Charge : 100Amp	R	747,00	859,05	new	new	
	kWH Unit cost						
E3E6	IBT BLOCK 1 0 - 350 kWh	c	201,74	232,00	180,65	207,75	11,67%
E3E7	IBT BLOCK 2 351 - 600 kWh	c	274,84	316,07	269,22	309,60	2,09%
E3E8	IBT BLOCK 3 > 600 kWh	c	367,47	422,59	333,94	384,03	10,04%
E3E	Two-Part Tariff: Credit up to 100A (70 kVA BDMD) COMMERCIAL						
EB2C	Basic Monthly charge per meter per month	R	893,30	1 027,30	1 009,78	1 161,25	-11,54%
EC	Capacity Charge per Amp/Phase/Month	R	3,82	4,39	new	new	
EC3A	Capacity Charge : 40Amp	R	458,40	527,16	new	new	
EC3B	Capacity Charge : 60Amp	R	687,60	790,74	new	new	
EC3C	Capacity Charge : 80Amp	R	916,80	1 054,32	new	new	
EC3D	Capacity Charge : 100Amp	R	1 146,00	1 317,90	new	new	



OVERSTRAND MUNICIPALITY TARIFF LIST 2024/2025 AFTER NERSA APPROVAL

3

Tariff Code	Detail		2024/2025		2023/2024		
			Exclude VAT	Include VAT 15%	Exclude VAT	Include VAT 15%	
E3E3	kWH Unit cost	c	291,29	334,98	289,94	333,43	0,47%
E3E	Two-Part Tariff: Pre-paid up to 100A (70 kVA BDMD) COMMERCIAL						
EB2D	Basic Monthly charge per meter per month	R	893,30	1 027,30	1 009,78	1 161,25	-11,54%
EC	Capacity Charge per Amp/Phase/Month	R	3,82	4,39	new	new	
EC3A	Capacity Charge : 40Amp	R	458,40	527,16	new	new	
EC3B	Capacity Charge : 60Amp	R	687,60	790,74	new	new	
EC3C	Capacity Charge : 80Amp	R	916,80	1 054,32	new	new	
EC3D	Capacity Charge : 100Amp	R	1 146,00	1 317,90	new	new	
E3E4	kWH Unit cost	c	277,50	319,13	273,22	314,20	1,57%
E3G	One-Part Tariff: Pre-paid only; up to 100A (70 kVA BDMD) Businesses, Flats, Sport grounds, Churches.(minimum of 800kWH average for twelve months)						
E1E1	Basic Monthly charge per meter per month	R	49,41	56,82	new	new	
EC	Capacity Charge per Amp/Phase/Month	R	3,82	4,39	new	new	
EC3A	Capacity Charge : 40Amp	R	458,40	527,16	new	new	
EC3B	Capacity Charge : 60Amp	R	687,60	790,74	new	new	
EC3C	Capacity Charge : 80Amp	R	916,80	1 054,32	new	new	
EC3D	Capacity Charge : 100Amp	R	1 146,00	1 317,90	new	new	
E3G1	kWH Unit cost	c	336,62	387,11	344,86	396,59	-2,39%
E5	TIME OF USE TARIFF						
E5A	TIME OF USE TARIFF MV						
E5A1	Basic charge	R	4 864,79	5 594,51	4 801,58	5 521,82	1,32%
E5A2	Network Capacity Charge kVA: Notified Maximum Demand (NMD)	R	43,43	49,94	47,36	54,46	-8,30%
E5A3	Network Demand Charge kVA: Utilised capacity	R	62,81	72,23	37,75	43,41	66,38%
E5A4	Hi-Demand: Peak kWh Unit Charge	C	551,96	634,75	466,19	536,12	18,40%
E5A5	Hi-Demand: Standard kWh Unit Charge	C	176,20	202,63	143,45	164,97	22,83%
E5A6	Hi-Demand: Off Peak kWh Unit Charge	C	101,86	117,14	79,68	91,63	27,84%
E5A7	Low Demand: Peak kWh Unit Charge	C	446,21	513,14	472,17	543,00	-5,50%
E5A8	Low Demand: Standard kWh Unit Charge	C	163,90	188,49	149,41	171,82	9,70%
E5A9	Low Demand: Off Peak kWh Unit Charge	C	98,38	113,14	85,68	98,53	14,82%
E5A10	Reactive Energy charge, per kilo volt amps reactive hours	C	5,37	6,18	new	new	
E5B	TIME OF USE TARIFF LV						
E5B1	Basic charge	R	3 750,55	4 313,13	4 246,56	4 883,54	-11,68%
E5B2	Network Capacity Charge kVA: Notified Maximum Demand (NMD)	R	49,30	56,70	47,36	54,46	4,10%
E5B3	Network Demand Charge kVA: Utilised capacity	R	76,39	87,85	37,75	43,41	102,36%
E5B4	Hi-Demand: Peak kWh Unit Charge	C	557,91	641,60	466,19	536,12	19,67%
E5B5	Hi-Demand: Standard kWh Unit Charge	C	182,13	209,45	143,45	164,97	26,96%
E5B6	Hi-Demand: Off Peak kWh Unit Charge	C	107,82	123,99	79,68	91,63	35,32%
E5B7	Low Demand: Peak kWh Unit Charge	C	452,16	519,98	472,17	543,00	-4,24%
E5B8	Low Demand: Standard kWh Unit Charge	C	169,83	195,30	149,41	171,82	13,67%
E5B9	Low Demand: Off Peak kWh Unit Charge	C	104,35	120,00	85,68	98,53	21,79%
E5B10	Reactive Energy charge, per kilo volt amps reactive hours	C	5,37	6,18	new	new	
E5C	TIME OF USE TARIFF SMALL CUSTOMER <100 kVA						
E5C1	Basic charge	R	425,69	489,54	new	new	
E5C2	Network Capacity Charge R/Amp/phase/month	R	12,64	14,54	new	new	
E5C3	Hi-Demand: Peak kWh Unit Charge	C	674,30	775,45	new	new	
E5C4	Hi-Demand: Standard kWh Unit Charge	C	236,72	272,23	new	new	
E5C5	Hi-Demand: Off Peak kWh Unit Charge	C	149,85	172,33	new	new	
E5C6	Low Demand: Peak kWh Unit Charge	C	251,32	289,02	new	new	
E5C7	Low Demand: Standard kWh Unit Charge	C	187,50	215,63	new	new	
E5C8	Low Demand: Off Peak kWh Unit Charge	C	135,95	156,34	new	new	



OVERSTRAND MUNICIPALITY TARIFF LIST 2024/2025 AFTER NERSA APPROVAL

4

Tariff Code	Detail		2024/2025		2023/2024		
			Exclude VAT	Include VAT 15%	Exclude VAT	Include VAT 15%	
E5C9	Reactive Energy charge, per kilo volt amps reactive hours	C	21,47	24,69	new	new	
E5D	Exceed NOTIFIED MAXIMUM DEMAND (NMD) per kVA Per month R	R	1 921,40	2 209,61	1 280,56	1 472,64	50,04%
E6	SUBSIDIZED TARIFFS: Grant to be shown separately						
E6A	Basic Monthly Charge: Residential Indigent and Life-line consumer as per paragraph 5 of the Indigent Policy per meter (Based on Single phase basic charge + 30Amp capacity charge)	R	540,80	621,92	504,90	580,64	7,11%
E7	PUBLIC LIGHTING & CCTV						
E7A1	Streetlights & CCTV (metered) per kWh (no basic charge)	c	184,09	211,70	117,22	134,80	57,05%
E7A2	Streetlights & CCTV (consumption) (per unit/per month) (no basic charge) per 100 Watt per month	R	64,39	74,05	44,20	50,83	45,68%
E7A5	Illuminated street sign boards per month	R	64,39	74,05	44,20	50,83	45,68%
E7A6	Maintenance charge per light per month		34,64	39,84	31,36	36,06	10,46%
E8	CASUAL SUPPLIES						
E8A1	Per connection includes disconnection excluding hire of kiosk	R	1 914,79	2 202,00	1 740,08	2 001,09	10,04%
E8A2	Consumption per day if not metered	R	124,41	143,07	113,06	130,02	10,04%
E8A3	Hire of temporary distribution kiosk, per kiosk, per occasion	R	750,44	863,00	681,87	784,15	10,06%
E8A4	Deposit (Usage will be subtracted)	R	2 254,00	no vat	2 162,00	no vat	4,26%
E8A5	One part tariff : Prepaid or Credit Casual Supply	c	377,37	433,98	342,94	394,38	10,04%
E9	NETWORK CHARGES: SERVICED LAND						
E9A1	Network charge per serviced plot per month	R	578,11	664,83	504,90	580,64	14,50%
E9A2	Infrastructure Charge per Meter per month (No 1 end date 30 June 2026)	R	16,65	19,15	16,65	19,15	0,00%
E10	SUNDRY CHARGES						
E10A1	Call-out Fee - office hours (Based on 2 hours for electr & assist + 30km)	R	885,22	1 018,00	834,78	960,00	6,04%
E10A2	Call-out Fee - after hours: Weekdays & Saturdays (Based on 2 hrs (time and a half) for electr & assist + 30km)	R	1 242,61	1 429,00	1 172,17	1 348,00	6,01%
E10A3	Call-out Fee - after hours: Sundays & Public Holidays (Based on 2 hrs (double time) for electr & assist + 30km)	R	1 598,26	1 838,00	1 507,83	1 734,00	6,00%
E10A4	MV. Switching on Council's equipment office hours (Based on 3 hours for superintendent & electr + 60km)	R	2 577,39	2 964,00	2 431,30	2 796,00	6,01%
E10A5	MV. Switching on Council's equipment -after hours: Weekdays & Saturdays (Based on 3 hours (time and a half) for a superintendent and an electrician plus 60km)	R	3 693,04	4 247,00	3 484,35	4 007,00	5,99%
E10A6	MV. Switching on Council's equipment -after hours: Sundays & Public holidays (Based on 3 hours (double time) for a superintendent and an electrician plus 60km)	R	4 810,44	5 532,00	4 538,26	5 219,00	6,00%
E10A7	Contractor Inspection 2nd	R	866,09	996,00	817,39	940,00	5,96%
E10A8	Contractor Inspection 3rd	R	1 307,83	1 504,00	1 233,91	1 419,00	5,99%
E10A9	Disconnection	R	425,22	489,00	400,87	461,00	6,07%
E10A10	Reconnection	R	425,22	489,00	400,87	461,00	6,07%
E10A11	Verification of a Meter Reading	R	425,22	489,00	400,87	461,00	6,07%
E10A12	Administration fee - recalculation due to no meter access	R	220,87	254,00	208,70	240,00	5,83%
E10A13	Test of Meter: 1 & 3 Phase (Conditionally Refundable) External testing	R	815,65	938,00	769,57	885,00	5,99%
E10A14	Test of Meter: All other Meters (Conditionally Refundable) External testing	R	cost + 15%	applicable vat	cost + 15%	applicable vat	
E10A15	Tariff change - change between one part and two-part	R	289,57	333,00	273,04	314,00	6,05%
E10A16	Damage elect meter (based on meter cost + call out X 2)	R	2 901,74	3 337,00	2 737,39	3 148,00	6,00%
E10A16A	Damage Indigent household elect meter (bona fide)	R	0,00	0,00	new	new	
E10A17	Damage elect meter 3 phase (based on meter cost + call out X 2)	R	4 430,44	5 095,00	4 180,00	4 807,00	5,99%
E10A18	Replacement of CIU (Meter keypad) (Based on keypad cost and call out fee)	R	1 460,87	1 680,00	1 378,26	1 585,00	5,99%
E10A19	Damage of Bulk meter-(Based on 3 hours for a superintendent and electrician + 60km + bulk meter cost + modem cost)	R	9 590,44	11 029,00	9 047,83	10 405,00	6,00%
E10A20	Commission of Bulk meter, supplied by customer (call out fee x 3)	R	2 655,65	3 054,00	2 504,34	2 879,99	6,04%
E10A21	Damage of HV Cable	R	cost + R48 366.00	applicable vat	cost + R45 628.73	applicable vat	6,00%
E10A22	Damage of MV Cable	R	cost + R12 644.00	applicable vat	cost + R11 927.89	applicable vat	6,00%



OVERSTRAND MUNICIPALITY TARIFF LIST 2024/2025 AFTER NERSA APPROVAL

5

Tariff Code	Detail		2024/2025		2023/2024		
			Exclude VAT	Include VAT 15%	Exclude VAT	Include VAT 15%	
E10A23	Damage of LV Cable	R	cost + R 5 092.00	applicable vat	cost + R 4 803.88	applicable vat	6,00%
E10A24	Damage of Service Connection Cable	R	cost + R 1 274.00	applicable vat	cost + R 1 201.56	applicable vat	6,03%
E10A25	Working without Way leave	R	6 527,83	7 507,00	6 158,26	7 082,00	6,00%
E10A26	Refundable Wayleave deposit for HV cables	R	93 215,00	no vat	87 940,00	no vat	6,00%
E10A27	Refundable Way leave deposit for MV cables	R	23 304,00	no vat	21 985,00	no vat	6,00%
E10A28	Refundable Way leave deposit for LV cables	R	5 036,00	no vat	4 751,00	no vat	6,00%
E10A29	Cancellation Fee of requested service	R	15% of Service Value	no vat	15% of Service Value	no vat	
E10A30	Erection and removal of Banners, signs & lights (per hour) (Vehicle cost + labour)	R	1 056,52	1 215,00	996,52	1 146,00	6,02%
E10A31	Replacement of damaged overhead service connection cable (Tariff E13A9 - E10A18)	R	4 485,22	5 158,00	4 231,30	4 866,00	6,00%
E10A32	Removal of Meter (based on call out fee)	R	885,22	1 018,00	834,78	960,00	6,04%
E10A33	Repositioning of Meter (excl. cable) (based on call out fee)	R	885,22	1 018,00	834,78	960,00	6,04%
E10A34	Repositioning of Meter (incl. cable) (based on call out fee + 30m cable)	R	2 920,00	3 358,00	2 754,78	3 168,00	6,00%
E10A35	Request for bulk meter profile for 12 months per request (Based on 3 hours for Snr Superintendent + 30km)	R	1 473,91	1 695,00	1 390,44	1 599,00	6,00%
E11	UPGRADE OR DOWNGRADE (Network dependant)						
E11A1	Change of Circuit Breaker - S/Phase(1/annum) contact Electricity Department for approval (Based on Circuit Breaker cost + 1 hour for an electrician and assistant + 30km)	R	693,04	797,00	653,91	752,00	5,98%
E11A2	Change of Circuit Breaker - 3 Phase(1/annum) contact Electricity Department for approval (Based on Circuit Breaker cost + 1 hour for an electrician and assistant + 30km)	R	1 766,09	2 031,00	1 666,09	1 916,00	6,00%
E12	CONVERSION OF METERS						
E12A1	Convert Credit Meter to Pre-paid: SP (no cable work) (based on meter cost + call out)	R	2 017,39	2 320,00	1 903,48	2 189,00	5,98%
E12A2	Convert Credit Meter to Pre-paid: 3P (no cable work) (based on meter cost + call out)	R	3 546,96	4 079,00	3 346,09	3 848,00	6,00%
E12A3	Convert Credit Three Phase to Single Phase Pre-paid meter (based on meter cost + call out + CB)	R	2 245,22	2 582,00	2 118,26	2 436,00	5,99%
E12A4	Convert Credit Three Phase to Single Phase Credit (Commercial only)	R	1 374,78	1 581,00	1 297,39	1 492,00	5,97%
E12A5	Convert Pre-paid Single Phase to Three Phase Pre-paid (based on tariff E13A8) cost includes cable to boundary	R	R14 689.00 + ext fee	applicable vat	R13 857.51 + ext fee	applicable vat	6,00%
E12A6	Convert pre-paid Three phase to Single phase pre-paid (based on meter cost + call out + CB)	R	2 245,22	2 582,00	2 118,26	2 436,00	5,99%
E12A7	Change to Time of Use (with existing bulk meter) + Deposit	R	865,22	995,00	816,52	939,00	5,96%
E12A8	Change to Time of Use (without existing bulk meter) + Deposit	R	15 448,70	17 766,00	14 573,91	16 760,00	6,00%
E12A9	Change to SSEG Three Phase	R	9 590,44	11 029,00	9 047,83	10 405,00	6,00%
E12A10	Change to SSEG Single Phase	R	4 327,83	4 977,00	4 082,61	4 695,00	6,01%
E13	SERVICE CONNECTIONS						
E13A1	Builders connection (plus applicable service connection tariff)	R	1 121,74	1 290,00	1 058,26	1 217,00	6,00%
E13A4	Single Phase (Credit - 60A) option for Commercial users only (Based on 30m cable + meter cost + average labour cost + 15% admin fee)	R	7 956,52	9 150,00	7 506,09	8 632,00	6,00%
E13A6	Single Phase - (Pre-paid meters - 60A) applicable to Domestic users (Network Permitted) (Based on: 30m cable + meter cost + average labour cost + 15% admin fee)	R	7 956,52	9 150,00	7 506,09	8 632,00	6,00%
E13A7	Three Phase - (Pre-paid - 60A) plus extension fee. Extension fee not applicable to industrial event up to 60 Amp	R	R14 203.00 + ext fee	applicable vat	R14 342.50 + ext fee	applicable vat	6,00%
E13A8	Three Phase - (Pre-paid - 60A) plus extension fee. Extension fee not applicable to industrial event up to 60 Amp (Based on 30m (25mm) cable + meter cost + average labour + circuit breaker + 15% admin fee)	R	R14 203.00 + ext fee	applicable vat	R14 342.50 + ext fee	applicable vat	6,00%
E13A9	Non Standard : Pre-paid 30 Amp Single phase (Sub economic connections) (Based on 30m (10mm) cable + meter cost + average labour cost + 15% admin fee)	R	7 387,83	8 496,00	6 969,57	8 015,00	6,00%
E13A14	Any other none standard connections		cost + 15% admin	applicable vat	cost + 15% admin	applicable vat	
E14	ILLEGAL AND UNSAFE CONNECTION / TAMPERING FEE (Including SSEG and damage or bypass of the DSM Hot Water Cylinder Control Unit						
E14A1	1 st Offence	R	5 168,00	no vat	4 875,00	no vat	6,01%
E14A2	2 nd Offence (E14A1 X 2)	R	10 335,00	no vat	9 750,00	no vat	6,00%
E14A3	3 rd Offence and re-occurrence (Disconnection of service and remedial action fee = double previous* offence fee) *based on current tariffs		2 X E14A2	no vat	2 X E14A2	no vat	



OVERSTRAND MUNICIPALITY TARIFF LIST 2024/2025 AFTER NERSA APPROVAL

6

Tariff Code	Detail		2024/2025		2023/2024		
			Exclude VAT	Include VAT 15%	Exclude VAT	Include VAT 15%	
E14A4	Unsafe / Illegal supply of electricity (per visit) (reconnection fee included)	R	2 315,00	no vat	2 183,48	2 511,00	6,02%
E15	UPGRADING CONTRIBUTIONS (BULK INFRASTRUCTURE CONTRIBUTION LEVIES - BICL) (Network permitted : to be approved by Electricity Department)						
E15A1	Primary Cost p/kVA -include all HV Equipment UP to HV Substation or identified point of supply excluding Dist. TF	R	1 441,74	1 658,00	1 360,00	1 564,00	6,01%
E15A2	Primary Cost p/kVA -include all MV. Equipment UP to Main Substation or identified point of supply excluding Dist. TF	R	4 292,17	4 936,00	4 049,57	4 657,00	5,99%
E15A3	Secondary Cost p/kVA -include all MV. Equipment UP to Main Substation or identified point of supply including Dist. TF	R	5 231,30	6 016,00	4 934,78	5 675,00	6,01%
E15A4	Secondary Cost p/kVA -include all MV. Equipment UP to Main Substation or identified point of supply including Dist. TF and Kiosk	R	6 825,22	7 849,00	6 439,13	7 405,00	6,00%
E15A5	Buying/Refund of spare capacity cost/kVA	R	100% of approved installation cost	applicable vat	100% of approved installation cost	applicable vat	
E15A6	Investigation Fee	R	5 127,83	5 897,00	4 837,39	5 563,00	6,00%
E15A7	FACTOR OF 0,36 APPLICABLE ON DOMESTIC USERS : TARIFF : applicable on E15A3 AND E15A4 (Commercial /Business no factor apply)	R	Factor 0.36	applicable vat	Factor 0.36	applicable vat	
E18	SMALL SCALE EMBEDDED GENERATION (SSEG)						
	This tariff is available only for approved SSEG connections, where the customers offset their small scale generation against purchases from the Municipality, provided that their purchases exceed their generation. The consumer will stay on his existing tariff (All prepaid customers excluded) Prepaid customers to convert to credit meter and tariff.						
E18A2	Feed-in Tariff c/kWh (based on 85% of Eskom Standard Rate proportional over 12 months)	c	114,21	131,34	103,79	119,36	10,04%
DC2	DEVELOPMENT CONTRIBUTIONS (BULK INFRASTRUCTURE CONTRIBUTION LEVIES - BICL)						
DC2A	Sub Division of existing erf						
DC2A1	Single Phase 60 AMP (5 kVA) Domestic X Tariff E15A4 = P/ERF PLUS STANDARD CONNECTION FEES	R	34 127,83	39 247,00	32 195,65	37 025,00	6,00%
DC2B	New Developments						
DC2B1	Standard fee per Singel Phase Domestic erf - infrastructure provide by developer (13.8 kVA xE15A2 x.36)	R	21 323,48	24 522,00	20 116,52	23 134,00	6,00%
DC2B2	Standard fee per Three Phase Domestic erf - infrastructure provide by developer (42kVA x E15A2x.36)	R	64 897,39	74 632,00	61 224,35	70 408,00	6,00%
DC2C	MV/LV Bulk Supply with metering point cost / kVA= Tariff E15A2	R	4 325,22	4 974,00	4 080,00	4 692,00	6,01%
DC2C1	LV Bulk Supply if capacity is available on existing TF cost / kVA = Tariff E15A3	R	5 270,43	6 060,99	4 972,17	5 718,00	6,00%



We belong



We care



We serve

